



Government Gazette

OF THE STATE OF
NEW SOUTH WALES

Number 86
Friday, 25 June 2010

Published under authority by Government Advertising

SPECIAL SUPPLEMENT

WATER MANAGEMENT ACT 2000

Section 158

PROCLAMATION

I, Professor MARIE BASHIR, AC, CVO, Governor of the State of New South Wales, with the advice of the Executive Council, and in pursuance of the power vested in me under section 158 of the Water Management Act 2000, do by this my Proclamation, authorise the private irrigation board Anabranh Water to take over the water supply works described in Schedule 1 which are located within the area shown in Schedule 2.

Signed and sealed at Sydney this 23rd day of June 2010.

MARIE BASHIR,
Governor

By Her Excellency's Command,

PHILLIP COSTA, M.P.,
Minister for Water

GOD SAVE THE QUEEN!

SCHEDULE 1

Anabranh Water - Location of WAMC Assets

Property	Cadastral Parcel	Easting	Northing	Description of Asset	Location Of Asset
Allanvale	501//761444	565283	6250913	Air Valve	
	Road easement	566864	6248427	Air Valve	
	501//761444	566540	6248779	Air Valve	
	501//761444	565783	6249465	Air Valve	
	501//761444	565389	6249732	Air Valve	
	501//761444	565153	6249750	S&D Outlet	
	501//761444	565250	6250101	Scour Valve	
	Road Easement	565647	6249566	Service Valve	
	501//761444	565322	6249806	Service Valve	
	501//761444	565153	6249756	Storage Tank	
	4168/766734	548455	6254639	Storage Tank	
	501//761444			Pipeline	
Anabranh Hall	Road Easement	565264	6257084	Storage Tank	
Aston - Chalky	3809/766252	605001	6327475	Air Valve	
	3809/766252	602887	6327309	Air Valve	
	3809//766252	611518	6326941	Air Valve	
	3809//766252	610645	6327036	Air Valve	
	3809//766252	607456	6327470	Air Valve	
	3809//766252	610360	6327075	Main Valve	
	3809//766252			Pipeline	
	3809//766252	602963	6326979	S&D Outlet	
	3809//766252	611065	6326980	Scour Valve	
	3809//766252	608476	6327334	Scour Valve	
	3809//766252	602897	6327310	Service Valve	
	3809//766252	611720	6326961	Service Valve	
	3809//766252	602963	6326979	Storage Tank	

Property	Cadastral Parcel	Easting	Northing	Description of Asset	Location Of Asset
Belvedere	4288//767036	570271	6319176	Storage Tank	Springwood
	4281//466969	558976	6319129	Storage Tank	Springwood
	4282//766969	544736	6311917	Storage Tank	
Bulpunga	3//1089426	568961	6261206	Air Valve	
	497//761440	567399	6259910	Air Valve	
	497//761440	567470	6260304	Air Valve	
	Road Easement	567799	6260843	Air Valve	
	3//1089426	568193	6261449	Air Valve	
	3//1089426	568083	6261241	Irrigation Outlet	
	Road Easement	567783	6260819	Main Valve	
	3//1089426	568985	6261160	S&D Outlet	
	3//1089426	568487	6261214	Scour Valve	
	Road Easement	568564	6262171	Scour Valve	
	3//1089426	568065	6261235	Service Valve	
	3//1089426	568069	6261241	Service Valve	
	3//1089426	568985	6261160	Storage tank	
	497//761440			Pipeline	
	2//1089426			Pipeline	
	3//1089426			Pipeline	
1//1089426			Pipeline		
4935//45046			Pipeline		
Bunnerungie	3248//765453	570030	6288431	Air Valve	
	3248//765453	569665	6288591	Scour Valve	
	1913//763769	568353	6283855	Air Valve	
	3248//765453	568128	6288058	Air Valve	
	1910//763766	564166	6280704	Air Valve	
	1910//763766	565654	6282455	Air Valve	
	Road Easement	566873	6283507	Air Valve	
	1910//763766	567850	6284025	Air Valve	
	3248//765453	568310	6285170	Air Valve	
	3248//765453	568266	6285392	Air Valve	
	3248//765453	568203	6285747	Air Valve	
	Road Easement	567905	6287350	Air Valve	
	3248//765453	567759	6287677	Air Valve	
	3248//765453	567551	6288072	Air Valve	
	3248//765453	568232	6284177	Irrigation Outlet	
	3248//765453	568124	6284156	Main Valve	
	3248//765453	570195	6282439	S&D Outlet	
	1910//763766	564195	6280669	S&D Outlet	
	3248//765453	570187	6282393	S&D Outlet	
	3248//765453	569740	6282667	Scour Valve	
	1910//763766	564998	6281746	Scour Valve	
	3248//765453	568365	6284880	Scour Valve	
	3248//765453	566999	6289157	Scour Valve	
	3248//765453	568193	6284182	Service Valve	
	3248//765453	570185	6282401	Service Valve	
	3248//765453	568222	6284195	Service Valve	
	3248//765453	567692	6287809	Service Valve	
	3248//765453	570187	6282393	Storage Tank	
	3248//765453	558387	6289375	Storage Tank	
	1910//763766			Pipeline	
	3248//765453			Pipeline	
	Coleraine	1912//763768	564317	6275347	Air Valve
1912//763768		565089	6275286	Air Valve	
1912//763768		566208	6275195	Air Valve	
1912//763768		567114	6275154	Air Valve	
493//761436		566772	6272146	Air Valve	
493//761436		566355	6272705	Air Valve	
493//761436		564802	6272898	Air Valve	
493//761436		563787	6273542	Air Valve	
493//761436		563435	6274583	Air Valve	
1912//763768		563464	6274958	Air Valve	
1912//763768		563587	6276070	Air Valve	
1912//763768		563671	6277202	Air Valve	
493//761436		566812	6271781	Irrigation Outlet	
493//761436		566818	6271847	Main Valve	
493//761436		565606	6272725	Main Valve	
1912//763768		563585	6276083	Main Valve	
493//761436		565603	6272725	Pump Station	
493//761436		566737	6271732	S&D Outlet	
1912//763768		565319	6275266	Scour Valve	
493//761436		566642	6272501	Scour Valve	
493//761436		563722	6273627	Scour Valve	
493//761436		566827	6271729	Service Valve	
493//761436		566823	6271782	Service Valve	
1912//763768		563516	6275418	Service Valve	
493//761436		566737	6271732	Storage tank	
493//761436				Pipeline	
1912//763768			Pipeline		
Coleraine	1910//763766	564195	6280669	Storage tank	On Bunnerungie
Coleraine 16 Mile	3420//765709	552445	6295227	Storage tank	
Coleraine 16 Mile	3422//765711	551827	6286508	Storage tank	

Property	Cadastral Parcel	Easting	Northing	Description of Asset	Location Of Asset
Coolamon	Road Easement	565250	6265724	Storage Tank	On Tara Downs - Quambi
	4166/766732	544029	6266491	Storage Tank	
Coombah	3969/766442	568713	6360142	Storage Tank	on Wycot Station
	2/757141	558137	6350844	Storage Tank	
	395/761403	598372	6351775	Storage Tank	
Cuthero	4274/766962	585982	6334753	Air Valve	On Polia Station
	4274/766962	585991	6335596	Air Valve	
	4274/766962	587457	6338529	Air Valve	
	4274/766962	588119	6339184	Air Valve	
	4274/766962	588641	6340062	Air Valve	
	4274/766962	588810	6340675	Air Valve	
	4274/766962	589058	6341644	Air Valve	
	4274/766962	589132	6342074	Air Valve	
	4274/766962	589251	6342728	Air Valve	
	4274/766962	589454	6342909	Air Valve	
	4274/766962	589837	6343060	Air Valve	
	4274/766962	590082	6343281	Air Valve	
	4274/766962	591032	6343830	Air Valve	
	4274/766962	591340	6344299	Air Valve	
	4274/766962	591863	6344722	Air Valve	
	4274/766962	591944	6344853	Air Valve	
	4274/766962	592174	6345500	Air Valve	
	4274/766962	592500	6345888	Air Valve	
	4274/766962	592813	6346235	Air Valve	
	4274/766962	592914	6346441	Air Valve	
	4274/766962	592997	6346447	Air Valve	
	4274/766962	593155	6346618	Air Valve	
	4274/766962	593221	6346696	Air Valve	
	4274/766962	593320	6346811	Air Valve	
	4274/766962	593446	6346961	Air Valve	
	4274/766962	593629	6347168	Air Valve	
	4274/766962	593877	6347428	Air Valve	
	4274/766962	594430	6348105	Air Valve	
	4274/766962	594894	6348654	Air Valve	
	4274/766962	595106	6348935	Air Valve	
	4274/766962	595382	6349242	Air Valve	
	4274/766962	595675	6349597	Air Valve	
	4274/766962	585985	6335322	Main Valve	
	4274/766962	590500	6343319	Main Valve	
	4274/766962	589088	6341645	S&D Outlet	
	4274/766962	595706	6349632	Service Valve	
	4274/766962	591382	6345693	S&D Outlet	
	4274/766962	595936	6349352	S&D Outlet	
	4274/766962	595786	6349724	Scour Valve	
	4274/766962	588669	6341942	S&D Outlet	
	4274/766962	585977	6334301	Scour Valve	
	4274/766962	588909	6341123	Scour Valve	
4274/766962	592018	6345002	Scour Valve		
4274/766962	593114	6346575	Scour Valve		
4274/766962	593954	6347536	Scour Valve		
4274/766962	589071	6341828	Service Valve		
4274/766962	592086	6345340	Service Valve		
4274/766962	589088	6341645	Storage Tank		
4274/766962	589088	6341645	Storage Tank		
4274/766962			Pipeline		
4274/766962	591382	6345693	Storage Tank		
4274/766962	595936	6349352	Storage Tank		
4276/766964	596680	6332151	Storage Tank		
Fort Courage	1/1128335	567529	6227521	Storage Tank	
	1/1128335	567529	6227521	S&D Outlet	
	1/1128335	567436	6227521	Pump Station	
Glen Esk	Road Easement	565256	6251748	Air Valve	
	Road Easement	565202	6252164	Air Valve	
	500/761443	565062	6253222	Air Valve	
	500/761443	565049	6253800	Air Valve	
	500/761443	565082	6253089	Irrigation Outlet	
	500/761443	565123	6252761	Main Valve	
	500/761443	565234	6253229	S&D Outlet	
	500/761443	565030	6253371	Scour Valve	
	500/761443	565072	6253169	Service Valve	
	1911/763767	567049	6279256	Storage Tank	
	500/761443	565234	6253229	Storage Tank	
	500/761443	565234	6253229	Storage Tank	
	500/761443			Pipeline	

Property	Cadastral Parcel	Easting	Northing	Description of Asset	Location Of Asset
Glen Esk - Euro	1911/763767	563710	6277494	Air Valve	
	1911/763767	563778	6277980	Air Valve	
	1911/763767	563824	6278310	Air Valve	
	1911/763767	564048	6279874	Air Valve	
	1911/763767	567049	6279256	S&D Outlet	
	1911/763767	567049	6279248	S&D Outlet	
	1911/763767	563976	6279380	Scour Valve	
	1911/763767	564150	6280491	Service Valve	
	1911/763767	565541	6279967	Scour Valve	
	1911/763767	565965	6279814	Air Valve	
	1911/763767			Pipeline	
Hazeldell - 5 Mile	1915/763771	568157	6275190	S&D Outlet	
	1915/763771	568157	6275190	Storage Tank	
	1915/763771			Pipeline	
Kelso	2234/764156	570596	6288806	Storage Tank	On Nindethana
	1/756171	576220	6300556	Storage Tank	on Wyndham
Lamplough	498/761441	569498	6258705	Air Valve	
	498/761441	569870	6258597	Air Valve	
	498/761441	565099	6257312	Air Valve	
	498/761441	565053	6257563	Air Valve	
	Road Easement	565263	6258108	Air Valve	
	498/761441	565461	6258351	Air Valve	
	498/761441	566480	6258806	Air Valve	
	498/761441	565114	6257236	Main Valve	
	Road Easement	565264	6257084	S&D Outlet	
	498/761441	567948	6259035	Scour Valve	
	498/761441	565136	6257940	Scour Valve	
	498/761441	566671	6258807	Scour Valve	
	498/761441	565141	6257116	Service Valve	
	Road Easement	567400	6259245	Storage tank	
	3284/765540	571639	6258196	Storage tank	
	498/761441	567286	6259052	Service Valve	
	498/761441			Pipeline	
	Road Easement			Pipeline	
	498/761441	567400	6259245	S&D Outlet	
	498/761441	567386	6259311	Air Valve	
498/761441	567356	6259323	Air Valve		
498/761441	567365	6259313	Service Valve		
Lamplough - Studley	25/760088	571629	6258122	Air Valve	
	25/760088	571639	6258196	S&D Outlet	
	25/760088	571446	6258251	Scour Valve	
	25/760088	571604	6258163	Scour Valve	
	25/760088			Pipeline	
Manilla	3428/765717	585972	6333498	Air Valve	
	1918/763896	586376	6322830	Air Valve	
	1918/763896	586513	6324783	Air Valve	
	1918/763896	586564	6325463	Air Valve	
	3429/765718	586140	6326519	Air Valve	
	3429/765718	586293	6327399	Air Valve	
	3429/765718	585479	6328797	Air Valve	
	3428/765717	585710	6331463	Air Valve	
	3428/765717	585874	6332697	Air Valve	
	3429/765718	591680	6325234	Air Valve	
	3429/765718	590586	6325392	Air Valve	
	3429/765718	587586	6325859	Air Valve	
	1918/763896	586820	6325729	Air Valve	
	1918/763896	586572	6325624	Main Valve	
	1918/763896	586628	6325725	Main Valve	
	1918/763896	587321	6324473	S&D Outlet	
	1918/763896	586442	6323814	Scour Valve	
	3429/765718	585784	6328360	Scour Valve	
	3429/765718	591852	6325166	Scour Valve	
	3429/765718	589366	6325586	Scour Valve	
	1918/763896	586496	6324538	Service Valve	
	1918/763896	587321	6324473	Storage Tank	
	5280/768195	583552	6314299	Storage Tank	
	1926/763904	603748	6306622	Storage Tank	
	5305/768220	580599	6319395	Storage Tank	
	3429/765718	566503	6269220	Comra Dam High Level Structure	
	1918/763896			Pipeline	
	3429/765718			Pipeline	
	3428/765717			Pipeline	

Property	Cadastral Parcel	Easting	Northing	Description of Asset	Location Of Asset		
Milpara	Creekbed	570177	6244202	Air Valve	On Tara Downs Quambi		
	Creekbed	565924	6249854	Air Valve			
	1444/763316	570240	6244256	S&D Outlet			
	4/756941	566474	6250532	S&D Outlet			
	4/756941	566168	6250125	Scour Valve			
	3285/765541	571701	6257937	S&D Outlet			
	Road Easement	565254	6265727	Storage Tank			
	1444/763316	570240	6244256	Storage Tank			
	4/756941	566474	6250532	Storage Tank			
	3285/765541	571701	6257937	Storage Tank			
	1444/763316			Pipeline			
	4/756941			Pipeline			
3285/765541			Pipeline				
Mullingar - Hunters	1919/763897	585708	6320772	Air Valve	on Roo Roo Station		
	1919/763897	586488	6321077	Air Valve			
	1919/763897	586919	6321617	Air Valve			
	1919/763897	586649	6321911	Air Valve			
	3276/765532	599424	6327196	Air Valve			
	3808/766251	602409	6327269	Air Valve			
	3808/766251	601207	6327167	Air Valve			
	3276/765532	600602	6327072	Air Valve			
	3276/765532	595779	6325898	Air Valve			
	3277/765533	594919	6325660	Air Valve			
	3277/765533	592944	6325191	Air Valve			
	1919/763897	586561	6322120	Air Valve			
	3276/765532	599630	6328381	Air Valve			
	3276/765532	600421	6327026	Main Valve			
	3808/766251	601122	6327028	S&D Outlet			
	3276/765532	599800	6328493	S&D Outlet			
	3808/766251	602154	6327247	Scour Valve			
	1919/763897	586581	6322070	Scour Valve			
	3276/765532	596098	6325952	Scour Valve			
	3276/765532	599311	6328397	Service Valve			
	3808/766251	601115	6327160	Service Valve			
	3276/765532	599463	6326787	Service Valve			
	3276/765532	599312	6328392	Service Valve			
	3808/766251	601121	6327049	Storage Tank			
	1920/763898			Pipeline			
	3277/765533			Pipeline			
	3276/765532			Pipeline			
	1919/763897			Pipeline			
	3808/766251			Pipeline			
	1932/763910	593199	6303037	Storage Tank			
Nearie Lake Nature Reserv-	4513/767589	578144	6300481	Storage Tank	on Windamingle Pondaroosa		
Netherby Tona	3292/765548	575396	6241328	Storage Tank			
	23/756157			Pipeline			
Netherby (Wyndham)	3292/765548	575385	6241249	S&D Outlet			
	1/756171	576220	6300556	Storage Tank			
Nindathana	2234/764156	566406	6290574	Air Valve			
	2234/764156	566291	6291599	Air Valve			
	Road Easement	566264	6292351	Air Valve			
	2234/764156	566264	6293462	Air Valve			
	2234/764156	566264	6293887	Air Valve			
	2234/764156	566207	6294804	Air Valve			
	2234/764156	566151	6295385	Air Valve			
	2234/764156	566264	6293480	Main Valve			
	2234/764156	570609	6288779	S&D Outlet			
	2234/764156	570591	6288835	S&D Outlet			
	2234/764156	566256	6294329	Scour Valve			
	2234/764156			Pipeline			
	Nindethana Extension	1913/763769	569309	6280795		Air Valve	on Bunnerungie Station
		1913/763769				Pipeline	
2234/764156		570596	6288806	Storage Tank			
2234/764156		570596	6288806	Storage Tank			
3248/765453		570187	6282393	Storage Tank			

Property	Cadastral Parcel	Easting	Northing	Description of Asset	Location Of Asset	
Oakbank	11/756168	570831	6232964	Air Valve		
	5498/768726	570981	6234430	Air Valve		
	5498/768726	571465	6234415	Air Valve		
	Road Easement	570142	6231468	Air Valve		
	5498/768726	570354	6232027	Air Valve		
	5498/768726	570486	6232277	Air Valve		
	Road Easement	570649	6232686	Air Valve		
	Road Easement	570699	6232823	Air Valve		
	Road Easement	570724	6232954	Air Valve		
	Road Easement	570737	6233316	Air Valve		
	10/756168	570655	6233731	Air Valve		
	5498/768407	570969	6234841	Air Valve		
	5498/768407	570832	6235380	Air Valve		
	5498/768407	570435	6235994	Air Valve		
	5498/768407	570181	6236681	Air Valve		
	5498/768407	570182	6236925	Air Valve		
	5498/768407	570102	6237241	Air Valve		
	5498/768407	569924	6237538	Air Valve		
	5498/768407	569288	6238128	Air Valve		
	5828/768726	570892	6234440	Irrigation Outlet		
	11/756168	570737	6232861	Irrigation Outlet		
	5498/768407	570218	6236403	Main Valve		
	11/756168	570837	6232973	S&D Outlet		
	5828/768726	570463	6232228	Scour Valve		
	5498/768407	570947	6235049	Scour Valve		
	5498/768407	570202	6236473	Scour Valve		
	5498/768407	569687	6237745	Scour Valve		
	Road Easement	570705	6232867	Service Valve		
	Road Easement	570725	6232965	Service Valve		
	5828/768726	570882	6234432	Service Valve		
	5828/768726	570883	6234443	Service Valve		
	11/756168	570837	6232973	Storage tank		
	11/756168	570837	6232973	Storage tank		
	3/533115	566877	6254833	Storage tank		
	11/756168			Pipeline		
	10/756168			Pipeline		
	5828/768726			Pipeline		
	5498/768407			Pipeline		
	Oakbank - Wilton	499/761442	565875	6254862	Air Valve	
		499/761442	566353	6254788	Air Valve	
		499/761442	565234	6254227	Air Valve	
		499/761442	565422	6254635	Air Valve	
		499/761442	565805	6255663	Air Valve	
499/761442		565340	6256232	Air Valve		
3/533115		566877	6254833	S&D Outlet		
3/533115		566917	6254789	S&D Outlet		
499/761442		566586	6254795	Scour Valve		
499/761442		565729	6255791	Scour Valve		
499/761442		565574	6254947	Service Valve		
499/761442				Pipeline		
3/533115				Pipeline		
Polia		4276/766964	617039	6326368	Air Valve	
	4276/766964	611839	6327463	Air Valve		
	4276/766964	612047	6328243	Air Valve		
	4276/766964	598964	6328788	Air Valve		
	4276/766964	597044	6330927	Air Valve		
	4276/766964	596835	6331754	Air Valve		
	4276/766964	618645	6325671	Air Valve		
	4276/766964	617221	6326142	Air Valve		
	4276/766964	616215	6326273	Air Valve		
	4276/766964	615215	6326407	Air Valve		
	4276/766964	614327	6326505	Air Valve		
	4276/766964	613037	6326854	Air Valve		
	4276/766964	611959	6326956	Air Valve		
	4276/766964	596712	6332108	Air Valve		
	4276/766964	596679	6332134	S&D Outlet		
	4276/766964	596711	6332135	S&D Outlet		
	4276/766964	618949	6325527	Main Valve		
	4276/766964	619976	6325622	Pump Station		
	4276/766964	618962	6325529	Pump Station		
	4276/766964	612218	6328881	S&D Outlet		
	4276/766964	617012	6326615	S&D Outlet		
	4276/766964	617021	6326538	Scour Valve		
	4276/766964	611905	6327722	Scour Valve		
	4276/766964	612168	6328725	Scour Valve		
	4276/766964	599097	6328619	Scour Valve		
	4276/766964	598241	6329596	Scour Valve		
	4276/766964	596783	6331912	Scour Valve		
	4276/766964	618222	6325982	Scour Valve		
4276/766964	617060	6326161	Service Valve			

Property	Cadastral Parcel	Easting	Northing	Description of Asset	Location Of Asset
	4276/766964	612218	6328881	Storage tank	
	4276/766964	599800	6328493	Storage tank	
	4276/766964	619860	6325236	Storage tank	
	4276/766964	596711	6332114	Storage tank	
	4276/766964			Pipeline	
	17/757162			Pipeline	
	1/243790			Pipeline	
Popiltah	4736/760432	569264	6325901	S&D Outlet	
	4736/760432	569264	6325901	Storage tank	
	4736/760432	569264	6325901	Storage tank	
	4736/760432	547936	6335721	Storage tank	
	4736/760432			Pipeline	
Popio	2/757164	580602	6339667	Storage tank	
	4274/766962	588939	6341924	Storage tank	on Cuthero Station
Quambi Homestead	6706/822031	6265688	822031	Storage tank	
	6706/822031	566465	6265688	S&D Outlet	
Quambi (Watara)	6706/822031	566465	6265688	Storage Tank	
Roo Roo	1931/763909	584670	6314101	Air Valve	
	1931/763909	585370	6313927	S&D Outlet	
	1931/763909	585370	6313927	Storage Tank	
	1931/763909	591223	6309765	Storage Tank	
	1931/763909			Pipeline	
Springwood	Creek Bed	573706	6318594	Air Valve	
	Road Easement	570390	6319348	Air Valve	
	Road Easement	570352	6319532	Air Valve	
	4288/767036	573429	6319061	Air Valve	
	4288/767036	570271	6319176	S&D Outlet	
	4288/767036	570319	6319153	S&D Outlet	
	4288/767036	573405	6319115	Service Valve	
	4288/767036	570271	6319176	Storage Tank	
	4281/766969	558976	6319129	Storage Tank	
	4281/766969	558976	6319129	Storage Tank	
	4288/767036			Pipeline	
Tara Downs	5492/768401	568564	6244224	Air Valve	
	5492/768401	569622	6244185	Air Valve	
	5492/768401	569959	6244224	Air Valve	
	5492/768401	566241	6242960	Air Valve	
	5492/768401	566277	6243769	Air Valve	
	5492/768401	566541	6244316	Air Valve	
	502/761489	567713	6244692	Air Valve	
	502/761489	567727	6244716	Air Valve	
	502/761489	567881	6245081	Air Valve	
	502/761489	567878	6245218	Air Valve	
	502/761489	567862	6245702	Air Valve	
	502/761489	567564	6246473	Air Valve	
	502/761489	567485	6246609	Air Valve	
	502/761489	566949	6247797	Air Valve	
	502/761489	567742	6244704	Irrigation Outlet	
	502/761489	567724	6244695	Irrigation Outlet	
	5492/768401	566825	6244411	Main Valve	
	5492/768401	567911	6244577	S&D Outlet	
	5492/768401	569903	6244233	Scour Valve	
	5492/768401	567537	6244665	Scour Valve	
	502/761489	567090	6247323	Scour Valve	
	502/761489	567707	6244699	Service Valve	
	5492/768401	567857	6244544	Service Valve	
	5492/768401	567874	6244519	Service Valve	
	502/761489	567721	6244701	Service Valve	
	502/761489	567738	6244708	Service Valve	
	5492/768401	567939	6244626	Storage Tank	
	5492/768401	567939	6244626	Storage Tank	
	Road Easement	565254	6265727	Storage Tank	
	502/761489			Pipeline	
	5492/768401			Pipeline	
	502/761489	567013	6248094	Air Valve	
Tara Downs - Warrananga	19/756157	571278	6240869	Storage Tank	

Property	Cadastral Parcel	Easting	Northing	Description of Asset	Location Of Asset
Tara Downs - Quambi	6707/822031	565994	6265687	Air Valve	
	6707/822031	565058	6265740	Air Valve	
	6707/822031	565003	6266089	Air Valve	
	6707/822031	564922	6267183	Air Valve	
	6707/822031	565272	6268053	Air Valve	
	Road Easment	565259	6265720	S&D Outlet	
	Road Easment	565253	6265725	S&D Outlet	
	Road Easment	565260	6265731	S&D Outlet	
	6707/822031	565816	6265690	Scour Valve	
	6707/822031	565078	6265683	Scour Valve	
	1/756150	564948	6266823	Scour Valve	
	6707/822031	565077	6265682	Service Valve	
	6707/822031			Pipeline	
	6707/822031			Pipeline	
	1/756150			Pipeline	
	Road Easment			Pipeline	
6707/822031	565944	6268472	Main Valve		
Tona	2/756157	572557	6234385	Air Valve	
	3/756157	573678	6234355	Air Valve	
	4/756157	574047	6234344	Air Valve	
	4/756157	574279	6234338	Air Valve	
	4/756157	574752	6234385	S&D Outlet	
	4/756157	574449	6234332	Scour Valve	
	4/756157	574752	6234385	Storage Tank	
	1/756157			Pipeline	
	2/756157			Pipeline	
	3/756157			Pipeline	
	4/756157			Pipeline	
Toora	494/761437	566368	6269501	Air Valve	
	Road Easment	566433	6269746	Air Valve	
	494/761437	566591	6270355	Air Valve	
	494/761437	566672	6270663	Air Valve	
	494/761437	566799	6271159	Air Valve	
	494/761437	566262	6269042	Irrigation Outlet	
	494/761437	566388	6269008	S&D Outlet	
	494/761437	566390	6269024	S&D Outlet	
	494/761437	566521	6270086	Scour Valve	
	494/761437	566230	6269019	Service Valve	
	494/761437	566238	6269046	Service Valve	
	494/761437	566390	6269024	Storage tank	
	494/761437	566390	6269024	Storage tank	
	494/761437	566608	6269320	Toora Bywash	
	494/761437	566608	6269320	Toora Main Dam	
	494/761437			Pipeline	
	Road Easment			Pipeline	
Tor Downs	5402/768313	602875	6359548	Air Valve	
	5402/768313	603419	6359647	Air Valve	
	5401/768312	599275	6353362	Air Valve	
	Easement	599771	6353667	Air Valve	
	Easement	600051	6353868	Air Valve	
	5401/768312	600670	6354432	Air Valve	
	5401/768312	601308	6355140	Air Valve	
	5401/768312	601443	6355436	Air Valve	
	5401/768312	601684	6356375	Air Valve	
	5402/768313	601826	6356688	Air Valve	
	5402/768313	602132	6358088	Air Valve	
	5402/768313	602247	6358893	Air Valve	
	5402/768313	602363	6359263	Air Valve	
	5402/768313	602456	6359739	Air Valve	
	5402/768313	602270	6360015	Air Valve	
	5402/768313	602248	6360207	Air Valve	
	5581/768481	602078	6360608	Air Valve	
	5581/768481	602149	6360909	Air Valve	
	5581/768481	602267	6361685	Air Valve	
	5581/768481	602311	6362121	Air Valve	
	5581/768481	602445	6362432	Air Valve	
	5581/768481	602570	6362584	Air Valve	
	Easement	602645	6362780	Air Valve	
	5581/768481	602769	6363507	Air Valve	
	5581/768481	602884	6364057	Air Valve	
	5581/768481	602911	6364206	Air Valve	
	5581/768481	602945	6364454	Air Valve	
	5581/768481	603040	6364944	Air Valve	
	5402/768313	601811	6356655	Main Valve	
	5402/768313	602171	6358445	Main Valve	
	5402/768313	603435	6359894	S&D Outlet	
	5401/768312	598459	6353156	S&D Outlet	
5401/768312	599167	6353255	Scour Valve		

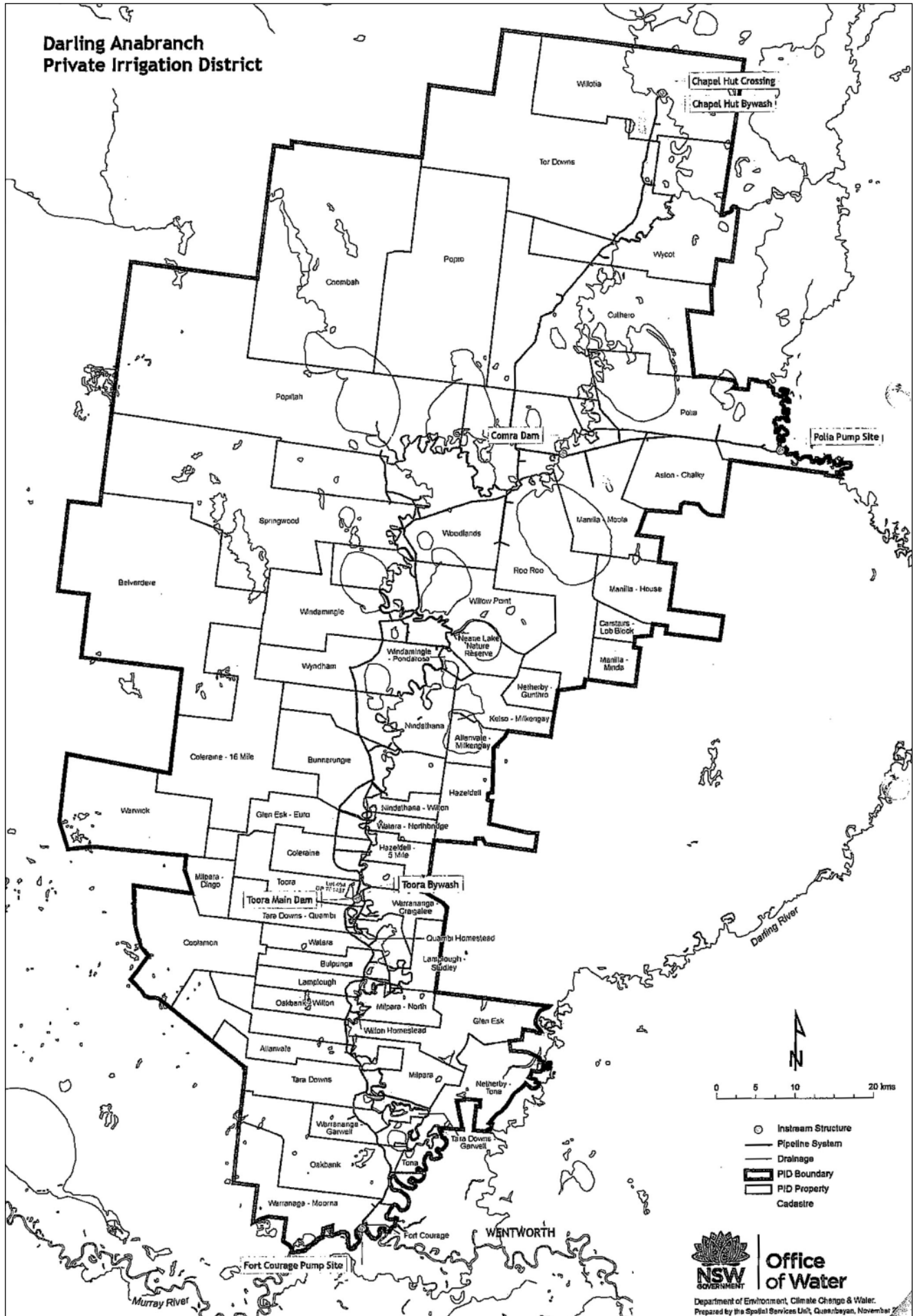
Property	Cadastral Parcel	Easting	Northing	Description of Asset	Location Of Asset
	5401/768312	600384	6354135	Scour Valve	
	Easement	602496	6359660	Scour Valve	
	5401/768312	598842	6352885	Service Valve	
	Easement	602503	6359629	Service Valve	
	5402/768313	603349	6359454	Service Valve	
	5402/768313	603403	6359455	Service Valve	
	5402/768313	603435	6359894	Storage Tank	
	5401/768312	598459	6353156	Storage Tank	
	5401/768312	598459	6353156	Storage Tank	
	5401/768312			Pipeline	
	5402/768313			Pipeline	
	5581/768481			Pipeline	
Warranaga - Moorna	2/623782	567469	6227781	Service Valve	
	2/623782	567469	6227749	Air Valve	
	2/623782	567449	6227839	Air Valve	
	2/623782	567464	6227755	Main Valve	
	2/623782	567474	6227757	Pump Station	
	5829/768727	568999	6230141	Air Valve	
	2/623782	567491	6228174	Air Valve	
	29/756168	568328	6229267	Air Valve	
	29/756168	568415	6229364	Air Valve	
	29/756168	568665	6229648	Air Valve	
	5829/768727	569095	6230138	Air Valve	
	5829/768727	569405	6230487	Air Valve	
	5829/768727	569800	6230940	Air Valve	
	5829/768727	568716	6230536	S&D Outlet	
	5829/768727	568910	6230264	Scour Valve	
	2/623782	567688	6228533	Scour Valve	
	5829/768727	569012	6230041	Scour Valve	
	5829/768727	569467	6230575	Scour Valve	
	5829/768727	569041	6230075	Service Valve	
	5829/768727			Pipeline	
	29/756168			Pipeline	
	2/623782			Pipeline	
	5493/768402	565512	6241273	Storage Tank	
	5493/768402	570499	6240230	Storage Tank	
	5829/768727	568716	6230536	Storage Tank	
Warrananga	494/761437	566390	6269024	Storage Tank	On Toora Station
Warrananga - Garwelt	5493/768402	570517	6240206	Air Valve	
	19/756157	571336	6240623	Air Valve	
	22/756157	574065	6241448	Air Valve	
	5493/768402	565917	6241446	Air Valve	
	5493/768402	569218	6238557	Air Valve	
	5493/768402	569082	6239204	Air Valve	
	5493/768402	569021	6239323	Air Valve	
	5493/768402	568283	6240092	Air Valve	
	5493/768402	567362	6240863	Air Valve	
	5493/768402	566272	6242683	Air Valve	
	19/756157	571278	6240869	S&D Outlet	
	5493/768402	565512	6241273	S&D Outlet	
	5493/768402	570511	6240209	S&D Outlet	
	5493/768402	569817	6239780	Scour Valve	
	5493/768402	566177	6241552	Scour Valve	
	5493/768402	566262	6242174	Scour Valve	
	5493/768402	569013	6239318	Service Valve	
	19/756157	571372	6240645	Service Valve	
	5493/768402	570513	6240204	Service Valve	
	5493/768402	566516	6241700	Service Valve	
	19/756157			Pipeline	
Warwick	1911/763767	567049	6279256	Storage tank	on Glen Esk
	4068/766543	545831	6277995	Storage tank	
	4068/766543	545831	6277995	Storage tank	
Watara	496/761439	567067	6263852	Air Valve	
	496/761439	565739	6264746	Air Valve	
	496/761439	568868	6263999	S&D Outlet	
	496/761439	567896	6263273	Scour Valve	
	496/761439	567896	6263272	Service Valve	
	1914/763770	568615	6279502	Storage Tank	
	496/761439	568868	6263999	Storage Tank	
	496/761439			Pipeline	
	2/756150			Pipeline	
Watara - Northbridge	1914/763770	569681	6279298	S&D Outlet	
	1914/763770	569508	6279687	Scour Valve	
	1914/763770			Pipeline	

Property	Cadastral Parcel	Easting	Northing	Description of Asset	Location Of Asset
Willotia	5705/768605	603936	6367319	Air Valve	
	5705/768605	603172	6365386	Air Valve	
	5705/768605	603385	6366163	Air Valve	
	5705/768605	603534	6366682	Air Valve	
	5705/768605	603617	6366964	Air Valve	
	5705/768605	603729	6367357	Air Valve	
	5705/768605	603807	6367656	Air Valve	
	5705/768605	603881	6367924	Air Valve	
	5705/768605	603994	6368655	Air Valve	
	5705/768605	603649	6369737	Air Valve	
	5705/768605	603862	6370034	Air Valve	
	5705/768605	604279	6370724	Air Valve	
	5705/768605	604633	6370969	Air Valve	
	5705/768605	603939	6368118	Main Valve	
	5705/768605	605005	6370950	S&D Outlet	
	5705/768605	604335	6367190	S&D Outlet	
	5705/768605	603790	6367568	Scour Valve	
	5705/768605	604232	6370659	Scour Valve	
	5705/768605	603716	6367314	Service Valve	
	5593/768493	605005	6370950	Storage Tank	
	5705/768605	604335	6367190	Storage Tank	
	5705/768605	604734	6370973	Chapel Hut Crossing	
		Freehold		Pipeline	
	5593/768493		Pipeline		
			Pipeline		
Willow Point	5301/768216	573492	6309817	Air Valve	
	5301/768216	572980	6310341	Air Valve	
	5282/768197	572592	6311129	Air Valve	
	5301/768216	571659	6311405	Air Valve	
	1933/763911	574085	6306860	Air Valve	
	1933/763911	574003	6307296	Air Valve	
	1933/763911	573854	6308454	Air Valve	
	1933/763911	573801	6308834	Air Valve	
	1933/763911	573760	6309138	Air Valve	
	1933/763911	573724	6309390	Air Valve	
	5301/768216	573547	6310922	Air Valve	
	5301/768216	573564	6311536	Air Valve	
	1933/763911	574032	6307156	Main Valve	
	5301/768216	571606	6311371	S&D Outlet	
	1933/763911	573749	6309389	S&D Outlet	
	5301/768216	572920	6310875	Scour Valve	
	1933/763911	573883	6308240	Scour Valve	
	1933/763911	573817	6308713	Scour Valve	
	1933/763911	573680	6309704	Service Valve	
	5301/768216	571606	6311371	Storage Tank	
	1933/763911	573749	6309389	Storage Tank	
		1933/763911		Pipeline	
		5282/768197		Pipeline	
	5301/768216		Pipeline		
Windamingle	5304/768219	572029	6304168	Air Valve	
	5304/768219	572601	6302792	Air Valve	
	5304/768219	569483	6302185	Air Valve	
	5304/768219	569284	6303322	Air Valve	
	5304/768219	569211	6304309	Air Valve	
	5304/768219	570532	6304399	Air Valve	
	5304/768219	570828	6304405	Air Valve	
	5304/768219	571235	6304459	Air Valve	
	5304/768219	571319	6304461	Air Valve	
	5304/768219	572091	6304586	Air Valve	
	5304/768219	573200	6305158	Air Valve	
	5304/768219	570354	6305195	S&D Outlet	
	5304/768219	572783	6302869	S&D Outlet	
	5304/768219	570367	6305083	Scour Valve	
	5304/768219	569398	6302787	Scour Valve	
	5304/768219	573433	6305414	Scour Valve	
	5304/768219	570582	6304398	Service Valve	
	5304/768219	571810	6304475	Service Valve	
	5304/768219	572611	6302943	Service Valve	
	5304/768219	570354	6305195	Storage Tank	
	5302/768217	563607	6307277	Storage Tank	
	5304/768219	572783	6302869	Storage Tank	
		5304/768219		Pipeline	
	5304/768219	573558	6305542	Air Valve	
Windamingle - Ponderosa	4513/767589	577351	6300745	Air Valve	
	4513/767589	577500	6300640	Air Valve	
	4513/767589	577725	6300488	Air Valve	
	4513/767589	578121	6300456	Air Valve	
	4513/767589	578144	6300481	S&D Outlet	
	4513/767589	577294	6300885	Scour Valve	
		4513/767589		Pipeline	

Property	Cadastral Parcel	Easting	Northing	Description of Asset	Location Of Asset
Wilton Homestead	3/533115	566917	6254789	Storage tank	Oakbank - Wilton
Woodlands	5303/768218	572859	6319758	Air Valve	
	5285/768200	571930	6315995	Air Valve	
	5305/768220	574252	6317525	Air Valve	
	5305/768220	573971	6318058	Air Valve	
	5305/768220	573849	6318295	Air Valve	
	5303/768218	574083	6320035	Air Valve	
	5303/768218	572388	6319959	Air Valve	
	5303/768218	571693	6320246	Air Valve	
	5303/768218	570103	6320639	Air Valve	
	Road Easement	569950	6320314	Air Valve	
	5303/768218	569863	6321879	Air Valve	
	5303/768218	569625	6323077	Air Valve	
	5300/768215	569062	6325060	Air Valve	
	5305/768220	584868	6319954	Air Valve	
	5305/768220	584729	6318922	Air Valve	
	5305/768220	584590	6317882	Air Valve	
	5305/768220	584424	6316633	Air Valve	
	5280/768195	584123	6314288	Air Valve	
	5280/768195	573603	6312117	Air Valve	
	5280/768195	573415	6313103	Air Valve	
	5280/768195	573137	6313550	Air Valve	
	5285/768200	572210	6315093	Air Valve	
	5285/768200	572674	6316454	Air Valve	
	5285/768200	572971	6316697	Air Valve	
	5285/768200	573563	6317100	Air Valve	
	5285/768200	574324	6317271	Air Valve	
	5305/768220	575808	6317765	Air Valve	
	5305/768220	576047	6317842	Air Valve	
	5305/768220	576528	6317998	Air Valve	
	5305/768220	578586	6318714	Air Valve	
	5305/768220	580634	6319375	Air Valve	
	5305/768220	583896	6319767	Air Valve	
	5305/768220	584936	6320162	Air Valve	
	5285/768200	572685	6316462	Main Valve	
	5305/768220	582112	6319501	Main Valve	
	5280/768195	583552	6314299	S&D Outlet	
	5305/768220	580599	6319395	S&D Outlet	
	Creek Bed	571641	6315942	S&D Outlet	
	5303/768218	574274	6320158	S&D Outlet	
	5305/768220	573759	6318458	Scour Valve	
	5303/768218	574048	6319699	Scour Valve	
	5303/768218	573170	6319630	Scour Valve	
	5303/768218	570779	6320544	Scour Valve	
	5303/768218	569684	6322685	Scour Valve	
	5305/768220	584844	6319784	Scour Valve	
	5280/768195	573607	6312335	Scour Valve	
	5285/768200	572124	6315483	Scour Valve	
	5305/768220	577708	6318389	Scour Valve	
	Freehold	582790	6319560	Scour Valve	
	5285/768200	574438	6317298	Service Valve	
	Road Easement	569856	6320617	Service Valve	
	Road Easement	569813	6320626	Service Valve	
	5303/768218	569755	6322395	Service Valve	
	5305/5768220	584897	6320125	Service Valve	
	5280/768195	584122	6314243	Service Valve	
	5285/768200	572190	6316010	Service Valve	
	Road Easement	569819	6320600	Service Valve	
	5280/768195	584124	6314242	Service Valve	
	5280/768195	584120	6314241	Service Valve	
	Freehold	571641	6315942	Storage Tank	
	5303/768218	574274	6320158	Storage Tank	
	5303/768218	574274	6320158	Storage Tank	
	5303/768218	567428	6320487	Storage Tank	

Property	Cadastral Parcel	Easting	Northing	Description of Asset	Location Of Asset
Wycot	395/761043	596289	6350061	Air Valve	
	395/761043	596722	6349999	Air Valve	
	395/761043	596187	6350199	Air Valve	
	395/761043	596617	6350723	Air Valve	
	395/761043	598310	6352097	Air Valve	
	395/761043	598500	6352407	Air Valve	
	395/761043	596759	6350894	Main Valve	
	395/761043	598372	6351775	S&D Outlet	
	5693/768593	603771	6359435	S&D Outlet	
	395/761043	597178	6350008	S&D Outlet	
	395/761043	597657	6351672	Scour Valve	
	395/761043	596186	6350199	Service Valve	
	395/761043	598214	6351970	Service Valve	
	5693/768593	603771	6359435	Storage Tank	
	395/761043	597178	6350008	Storage Tank	
	395/761043	597178	6350008	Storage Tank	
	395/761043	598534	6352467	Main Valve	
Wyndham	5283/768198	573934	6301374	Air Valve	
	5283/768198	574414	6301322	Air Valve	
	5283/768198	575160	6301231	Air Valve	
	5283/768198	576250	6301105	Air Valve	
	5284/768199	566100	6295856	Air Valve	
	5284/768199	565904	6296953	Air Valve	
	5284/768199	565410	6298375	Air Valve	
	5283/768198	567982	6299288	Air Valve	
	5283/768198	568888	6300220	Air Valve	
	5284/768199	567966	6299259	Main Valve	
	5283/768198	569271	6301115	Main Valve	
	5284/768199	567954	6299250	Pump Station	
	1/756171	576215	6300558	S&D Outlet	
	1/756171	576216	6300564	S&D Outlet	
	1/756171	576228	6300561	S&D Outlet	
	5283/768198	573481	6301429	Scour Valve	
	5283/768198	574992	6301250	Scour Valve	
	1/756171	576222	6300602	Scour Valve	
	5284/768199	566135	6298435	Scour Valve	
	5283/768198	576253	6301105	Service Valve	
	1/756171	576220	6300556	Storage Tank	
1/756171	576220	6300556	Storage Tank		

SCHEDULE 2





New South Wales

Electronic Transactions (ECM Courts) Amendment (Consumer, Trader and Tenancy Tribunal) Order 2010

under the

Electronic Transactions Act 2000

I, the Attorney General, in pursuance of section 14C of the *Electronic Transactions Act 2000*, make the following Order.

Dated, this 16th day of June 2010.

JOHN HATZISTERGOS, M.L.C.,
Attorney General

Explanatory note

The object of this Order is to authorise the use of CTTT Online (an electronic case management system established under section 14B of the *Electronic Transactions Act 2000*) in relation to proceedings before the Consumer, Trader and Tenancy Tribunal.

This Order is made under section 14C of the *Electronic Transactions Act 2000*.

Clause 1 Electronic Transactions (ECM Courts) Amendment (Consumer, Trader and
 Tenancy Tribunal) Order 2010

Electronic Transactions (ECM Courts) Amendment (Consumer, Trader and Tenancy Tribunal) Order 2010

under the

Electronic Transactions Act 2000

1 Name of Order

This Order is the *Electronic Transactions (ECM Courts) Amendment
(Consumer, Trader and Tenancy Tribunal) Order 2010*.

2 Commencement

This Order commences on the day on which it is published in the
Gazette.

Electronic Transactions (ECM Courts) Amendment (Consumer, Trader and Tenancy Tribunal) Order 2010

Amendment of Electronic Transactions (ECM Courts) Order 2005

Schedule 1

Schedule 1 Amendment of Electronic Transactions (ECM Courts) Order 2005

[1] Clause 3 Definitions

Insert in alphabetical order in clause 3 (1):

CTTT Online means the electronic case management system of that name that has been established under section 14B of the Act.

[2] Clause 7

Insert after clause 6:

7 Authority to use CTTT Online

Pursuant to section 14C of the Act, CTTT Online is authorised to be used by any court specified in Column 1 of Schedule 4 for any purpose specified in Column 2 of that Schedule in relation to that court.

[3] Schedule 4

Insert after Schedule 3:

Schedule 4 Authority to use CTTT Online

(Clause 7)

Column 1	Column 2
Court	Purpose
Consumer, Trader and Tenancy Tribunal	Use in proceedings under the <i>Consumer, Trader and Tenancy Tribunal Act 2001</i> , but only so as: <ol style="list-style-type: none"> (a) to enable documents to be filed, issued, used and served in electronic form, and (b) to enable parties to the proceedings to communicate in electronic form with other parties to the proceedings and with the Consumer, Trader and Tenancy Tribunal, and (c) to enable information concerning the progress of the proceedings to be provided in electronic form to parties to the proceedings and to members of the public generally.