

Government Gazette

of the State of

New South Wales

Number 130

Friday, 8 December 2017

The New South Wales Government Gazette is the permanent public record of official notices issued by the New South Wales Government. It also contains local council and other notices and private advertisements.

The Gazette is compiled by the Parliamentary Counsel's Office and published on the NSW legislation website (www.legislation.nsw.gov.au) under the authority of the NSW Government. The website contains a permanent archive of past Gazettes.

To submit a notice for gazettal – see Gazette Information.


Mining and Petroleum Notices

COAL MINE SUBSIDENCE COMPENSATION REGULATION 2017

The following maps comprise the "Coal Mine Subsidence Compensation Act 2017 - Active Coal Mines Map" published for the purposes of clause 4(3) of the Coal Mine Subsidence Compensation Regulation 2017

Coal Mine Subsidence Compensation Act 2017
Active Coal Mines Map
Sheet 1 - Hunter Area

N

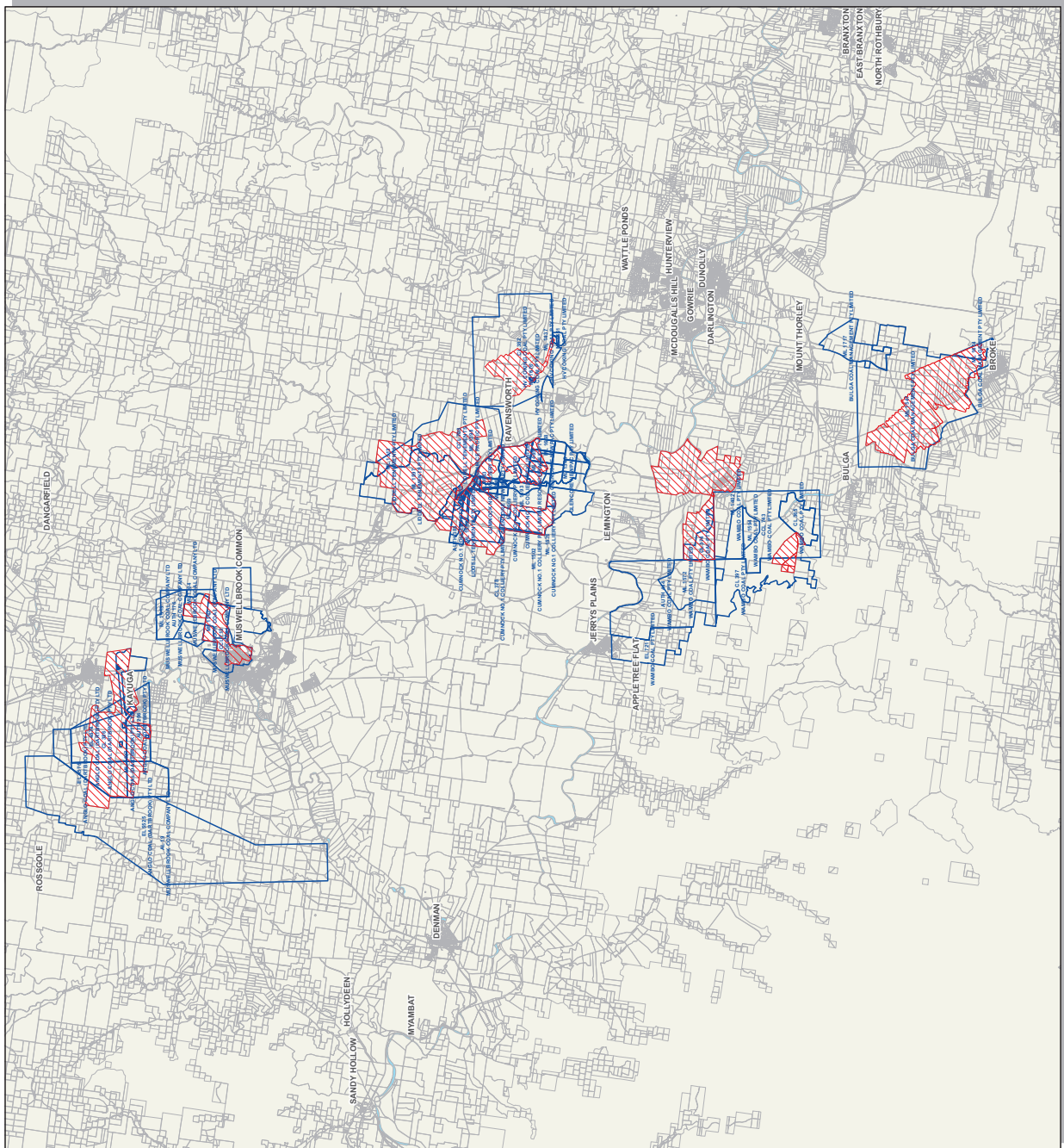


Legend

- SA NSW Non-active Mining Areas
- Current Coal Titles
- Lots

Scale 1:270000 Datum GDA 94

The Coal Mine Subsidence Compensation Act 2017 is administered by Subsidence Advisory NSW. Please refer to www.subsidenceadvisory.nsw.gov.au



Source: Digital data in this plan has been sourced from DFSI Spatial Services and DPE Resources Regulator.

The cadastral fabric used to produce this plan was extracted from the Digital Cadastre Database (DCDB). The DCDB is linked to the NSW State Control Survey and agree with those as at the date of extraction.

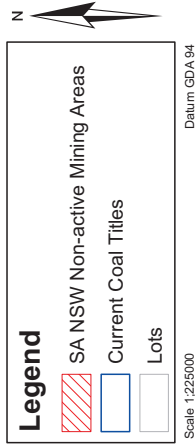
The coal lease title used to produce this plan was extracted from the Titles Administration System (TAS) and agree with those as at the date of extraction.

Disclaimer: The publisher of and/or contributors to this publication accept no responsibility for any injury, loss or damage arising from its use or errors or omissions.

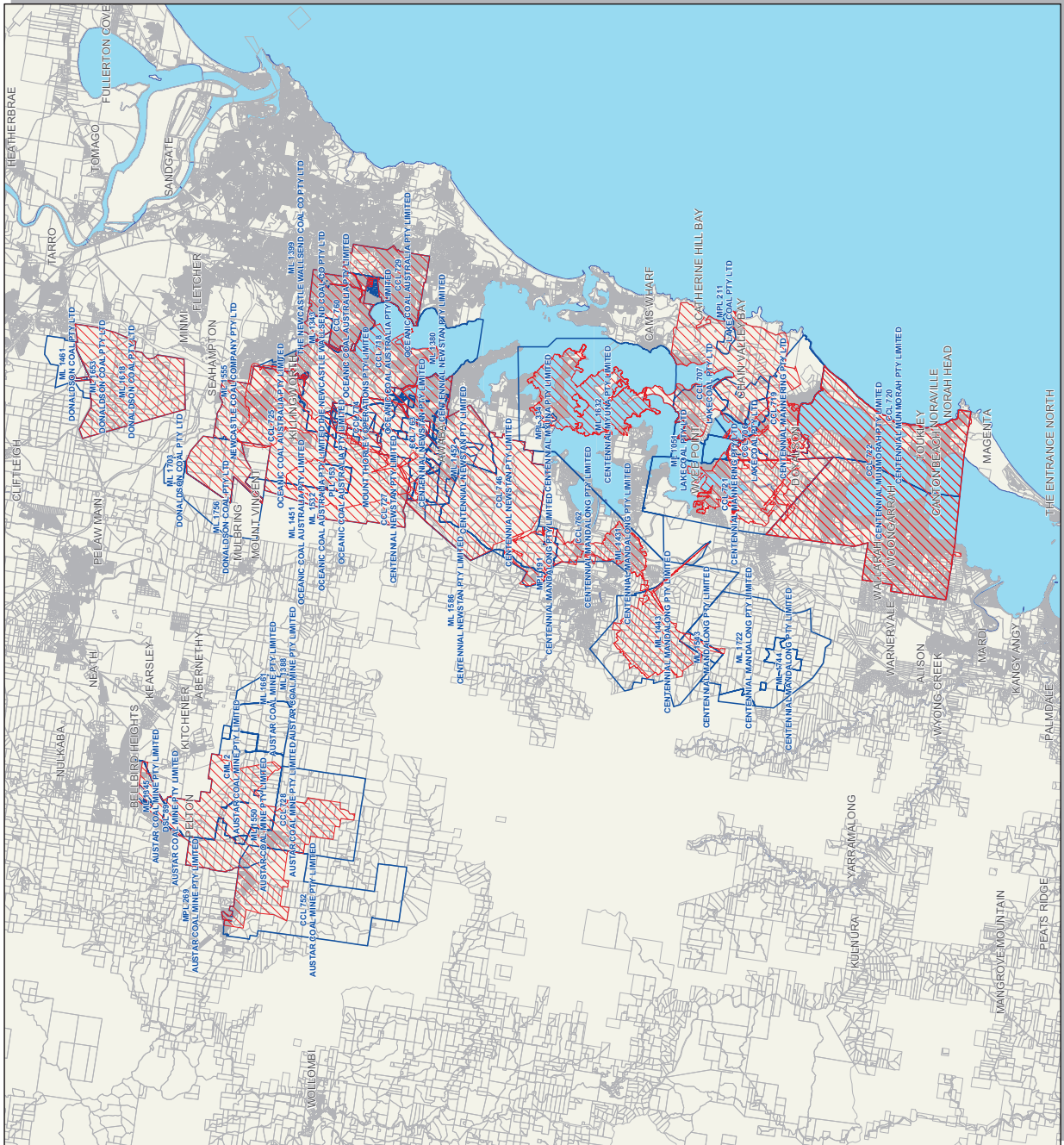
Accordingly, the State of New South Wales, Subsidence Advisory NSW and their servants and agents expressly disclaim any liability whatsoever for the consequences arising from any act done or omission made in reliance by others on the information contained in this plan.



Coal Mine Subsidence Compensation Act 2017
Active Coal Mines Map
Sheet 2 - Newcastle Area



The Coal Mine Subsidence Compensation Act 2017 is administered by Subsidence Advisory NSW. Please refer to www.subsidenceadvisory.nsw.gov.au



Source: Digital data in this plan has been sourced from DFSI Spatial Services and DPE Resources Regulator.

The cadastral fabric used to produce this plan was extracted from the Digital Cadastre Database (DCDB). The DCDB is linked to the NSW State Control Survey and agree with those as at the date of extraction.

The coal lease title used to produce this plan was extracted from the Titles Administration System (TAS) and agree with those as at the date of extraction.

Disclaimer:




The publisher of and/or contributors to this publication accept no responsibility for any injury, loss or damage arising from its use or errors or omissions.

Accordingly the State of New South Wales, Subsidence Advisory NSW and its agents expressly disclaim any liability for any error or omission whatsoever for the consequences arising from any act done or omission made in reliance by others on the information contained in this plan.



Coal Mine Subsidence Compensation Act 2017 Active Coal Mines Map Sheet 3 - Western Area



Legend	
	SANSW Non-active Mining Areas
	Current Coal Titles
	Lots

Scale 1:200000 Datum GDA 84

The Coal Mine Subsidence Compensation Act 2017 is administered by Subsidence Advisory NSW. Please refer to www.subsidenceadvisory.nsw.gov.au

Source:

Digital data in this plan has been sourced from DFSI Spatial Services and DPE Resources Regulator

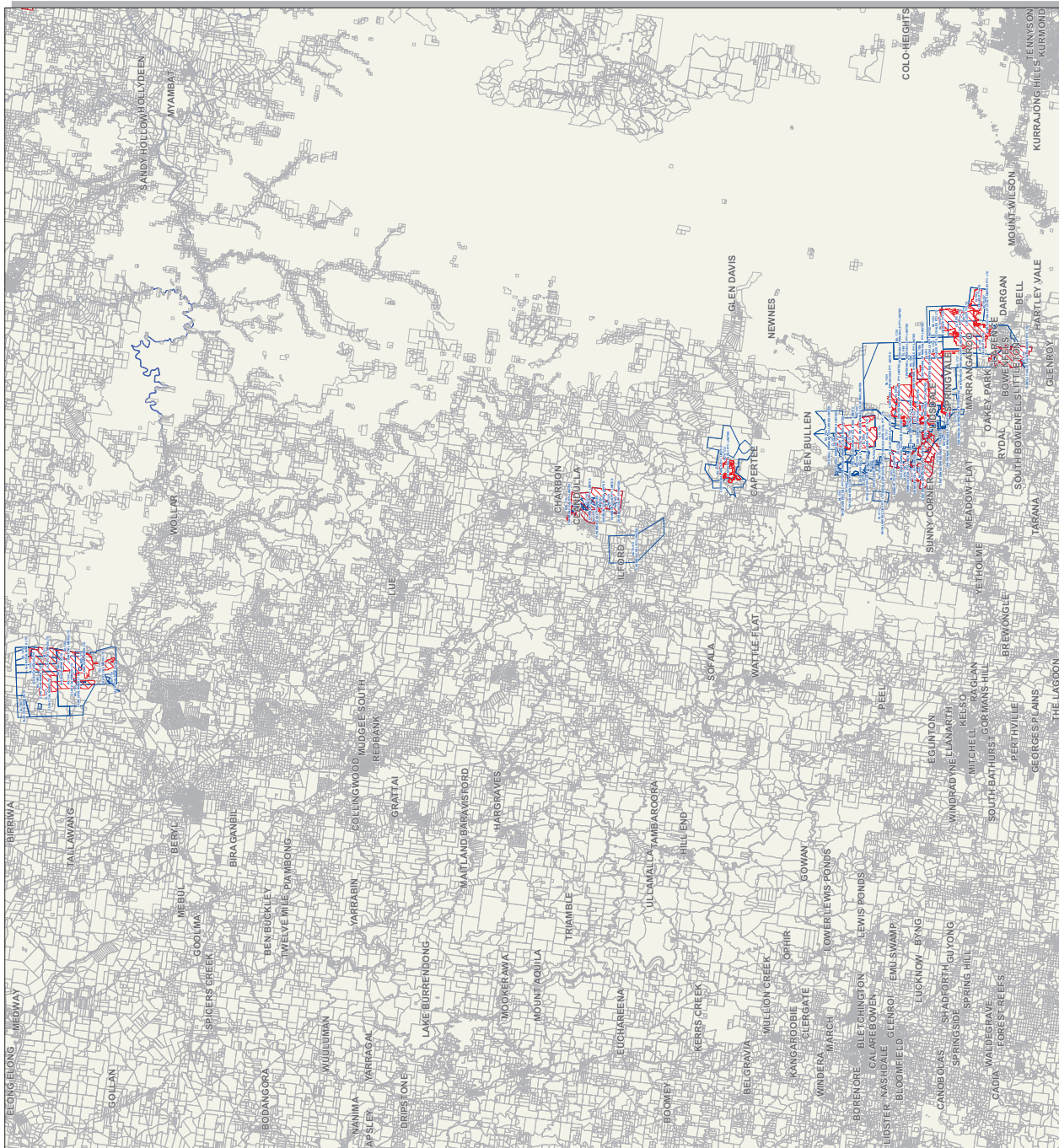
The cadastral fabric used to produce this plan was extracted from the Digital Cadastre Database (DCDB). The DCDB is linked to the NSW State Control Survey and agree with those as at the date of extraction.

The coal lease title used to produce this plan was extracted from the Titles Administration System (TAS) and agree with those as at the date of extraction.

Disclaimer:

The publisher of and/or contributors to this publication accept no responsibility for any injury, loss or damage arising from its use or errors or omissions.

Accordingly the State of New South Wales, Subsidence Advisory NSW and their servants and agents expressly disclaim any liability whatsoever for the consequences arising from any act done or omission made in reliance by others on the information contained in this plan.



Coal Mine Subsidence Compensation Act 2017
Active Coal Mines Map
Sheet 4 - Narrabri Area

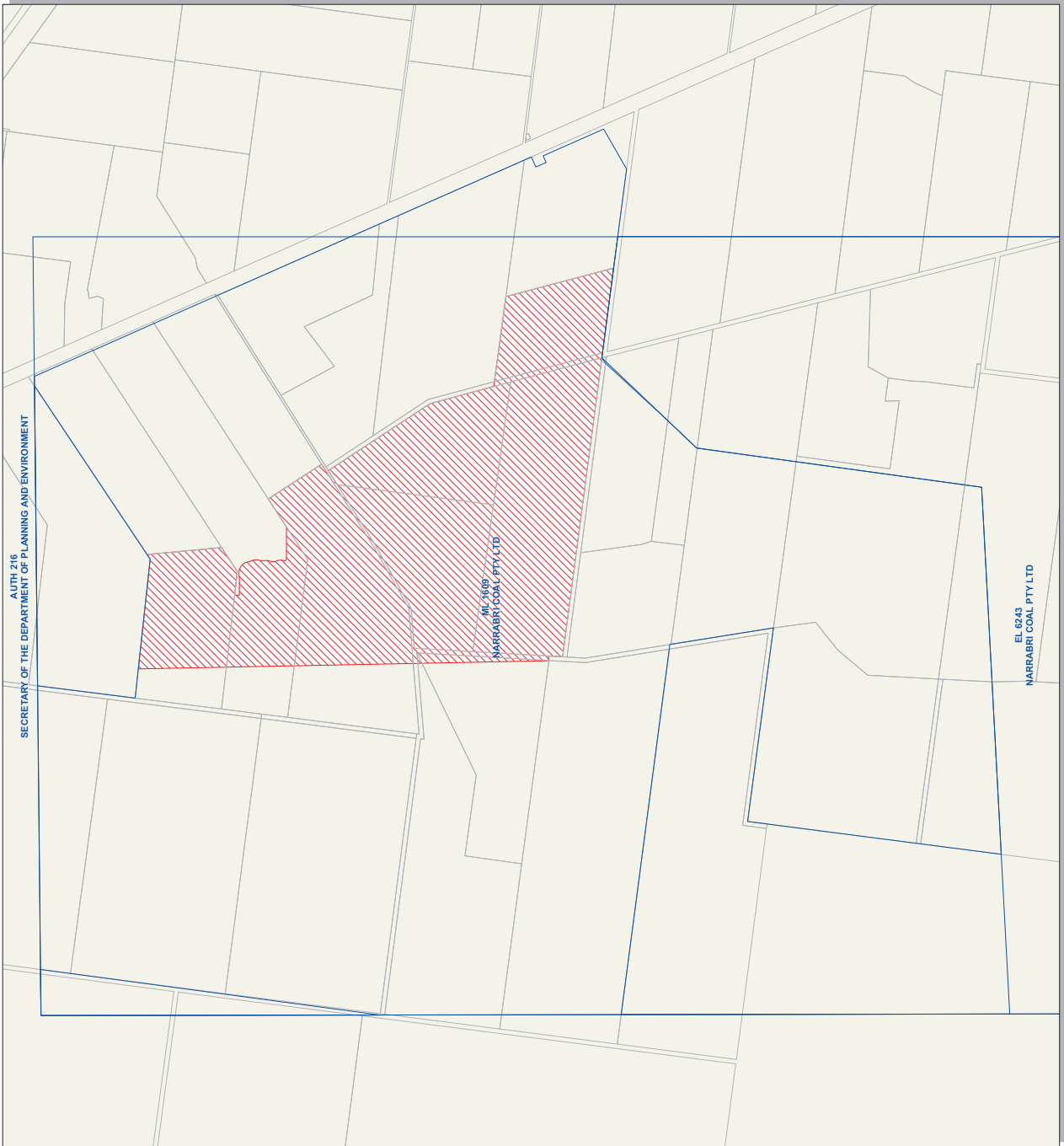


Legend

- SA NSW Non-active Mining Areas
- Current Coal Titles
- Lots

Scale 1:12000 Datum GDA 94

The Coal Mine Subsidence Compensation Act 2017 is administered by Subsidence Advisory NSW. Please refer to www.subsidenceadvisory.nsw.gov.au



SECRETARY OF THE DEPARTMENT OF PLANNING AND ENVIRONMENT
 AUTH 216

Source:

Digital data in this plan has been sourced from DFSI Spatial Services and DPE Resources Regulator.

The cadastral fabric used to produce this plan was extracted from the Digital Cadastral Database (DCDB). The DCDB is linked to the NSW State Control Survey and agree with those as at the date of extraction.

The coal lease title used to produce this plan was extracted from the Titles Administration System (TAS) and agree with those as at the date of extraction.

Disclaimer:


The publisher of and/or contributors to this publication accept no responsibility for any injury, loss or damage arising from its use or errors or omissions.

Accordingly the State of New South Wales, Subsidence Advisory NSW and their servants and agents expressly disclaim any liability whatsoever for the consequences arising from any act done or omission made in reliance by others on the information contained in this plan.



Coal Mine Subsidence Compensation Act 2017
Active Coal Mines Map
Sheet 5 - Southern Area

N

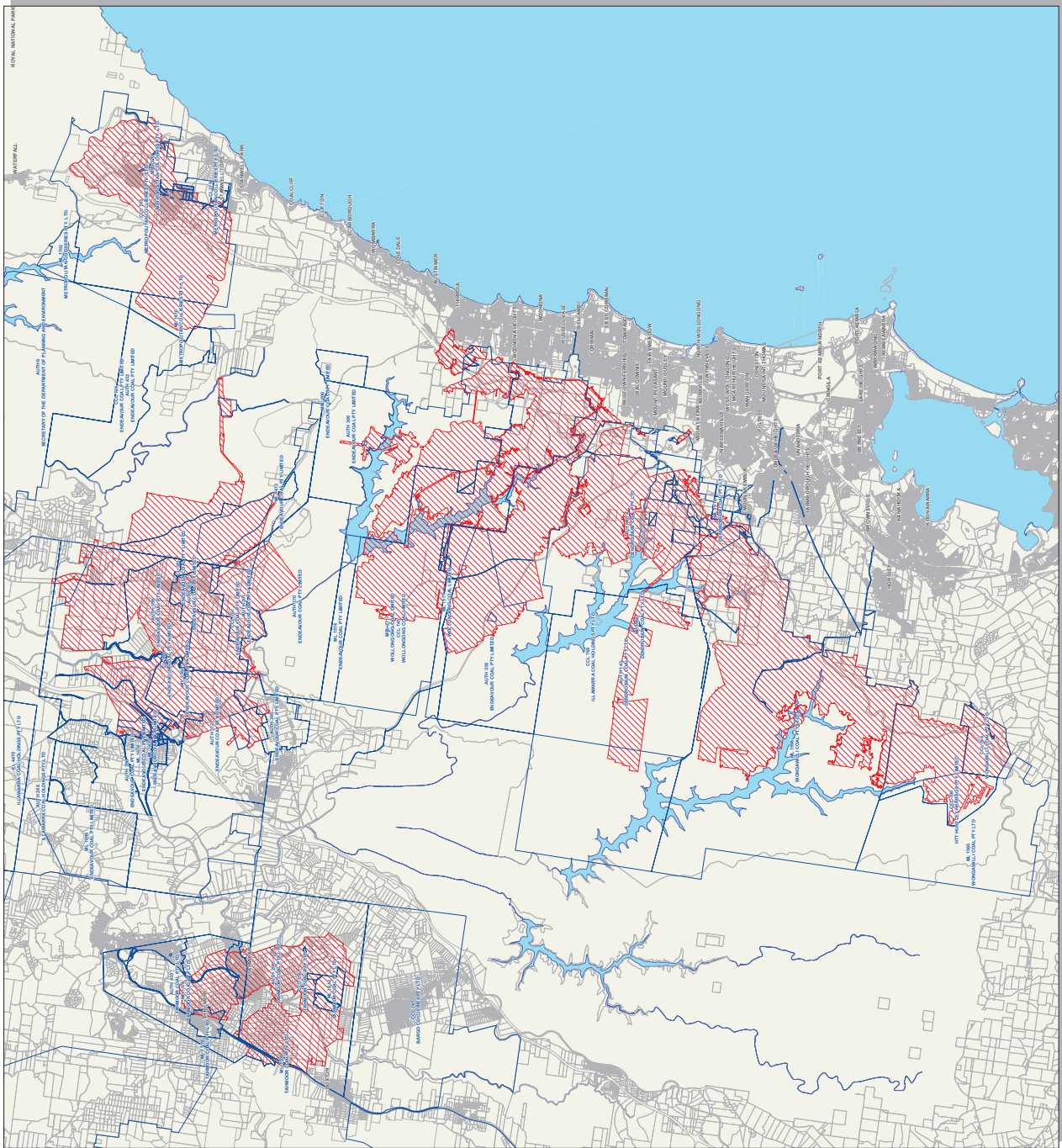


Legend

- SA NSW Non-active Mining Areas
- Current Coal Titles
- Lots

Datum GDA 94
1:60000

The Coal Mine Subsidence Compensation Act 2017 is administered by Subsidence Advisory NSW. Please refer to www.subsidenceadvisory.nsw.gov.au



Source:

Digital data in this plan has been sourced from DFSI Spatial Services and Resources Regulator.

The cadastral fabric used to produce this plan was extracted from the Digital Cadastre Database (DCDB). The DCDB is linked to the NSW State Control Survey and agree with those as at the date of extraction.

The coal lease title used to produce this plan was extracted from the Titles Administration System(TAS) and agree with those as at the date of extraction.

Disclaimer:

The publisher of and/or contributors to this publication accept no responsibility for any injury, loss or damage arising from its use or errors or omissions.

Accordingly the State of New South Wales, Subsidence Advisory NSW and their servants and agents expressly disclaim any liability whatsoever for the consequences arising from any act done or omission made in reliance by others on the information contained in this plan.

