



# *Government Gazette*

of the State of

New South Wales

**Number 4**

**Friday, 19 January 2018**

---

The New South Wales Government Gazette is the permanent public record of official notices issued by the New South Wales Government. It also contains local council and other notices and private advertisements.

The Gazette is compiled by the Parliamentary Counsel's Office and published on the NSW legislation website ([www.legislation.nsw.gov.au](http://www.legislation.nsw.gov.au)) under the authority of the NSW Government. The website contains a permanent archive of past Gazettes.

To submit a notice for gazettal – see Gazette Information.

---

---

# GOVERNMENT NOTICES

## Appointments

---

---

### ART GALLERY OF NEW SOUTH WALES ACT 1980

Department of Planning and Environment

Appointment of Trustees to the Art Gallery of New South Wales Trust

His Excellency the Governor, with the advice of the Executive Council, has approved, pursuant to Section 6 of the *Art Gallery of New South Wales Act 1980*, the appointment of the following persons as trustees of the Art Gallery of New South Wales Trust from 1 January 2018 to 31 December 2020 (inclusive):

- (i) Mr Khadim Ali (reappointment as Trustee under section 6(1) as a person who has knowledge of, or experience in, the visual arts)
- (ii) Professor Stephen Bruce Dowton (reappointment as Trustee)

The Hon Don Harwin MLC  
Leader of the Government in the Legislative Council  
Minister for Resources  
Minister for Energy and Utilities  
Minister for the Arts  
Vice-President of the Executive Council

[n2018-73]

---

### AUSTRALIAN MUSEUM TRUST ACT 1975

Department of Planning and Environment

Appointment of Trustees to the Australian Museum Trust

His Excellency the Governor, with the advice of the Executive Council, has approved, pursuant to Section 6 of the *Australian Museum Trust Act 1975* the appointment of the following persons as trustees of the Australian Museum Trust from 1 January 2018 to 31 December 2020 (inclusive):

- (i) Ms Jennifer Bott AO (reappointment)
- (ii) Professor Merlin Crossley (reappointment as Trustee under schedule 1,1(a) and schedule 1,1(b))
- (iii) Ms Shauna Jarrett (new appointment)
- (iv) Ms Sara Watts (new appointment)

The Hon Don Harwin MLC  
Leader of the Government in the Legislative Council  
Minister for Resources  
Minister for Energy and Utilities  
Minister for the Arts  
Vice-President of the Executive Council

[n2018-74]

---

### HISTORIC HOUSES ACT 1980

Department of Planning and Environment

Appointment of Trustees to the Historic Houses Trust

His Excellency the Governor, with the advice of the Executive Council, has approved, pursuant to Section 6 of the *Historic Houses Act 1980*, the appointment of the following persons as trustees of the Historic Houses Trust from 1 January 2018 to 31 December 2020 (inclusive):

- (iii) Ms Naseema Sparks (reappointment as Trustee)
- (iv) Ms Penelope Seidler AM (new appointment as Trustee under Section 6 (1))
- (v) Ms Chris McDiven AM (new appointment as Trustee)

The Hon Don Harwin MLC  
Leader of the Government in the Legislative Council  
Minister for Resources  
Minister for Energy and Utilities  
Minister for the Arts  
Vice-President of the Executive Council

[n2018-75]

---

**HISTORIC HOUSES ACT 1980**

Department of Planning and Environment

Appointment of Trustees to the Historic Houses Trust

Her Honour the Administrator, with the advice of the Executive Council, has approved, pursuant to Section 6 of the *Historic Houses Act 1980*, the appointment of Professor Michael McDaniel as a Trustee of the Historic Houses Trust of New South Wales from 27 September 2017 to 26 September 2020 (inclusive):

The Hon Don Harwin MLC  
Leader of the Government in the Legislative Council  
Minister for Resources  
Minister for Energy and Utilities  
Minister for the Arts  
Vice-President of the Executive Council

[n2018-76]

---

**LIBRARY ACT 1939**

Department of Planning and Environment

Appointment of Members to the Library Council of New South Wales

His Excellency the Governor, with the advice of the Executive Council, has approved, pursuant to Section 4 of the *Library Act 1939*, the appointment of the following persons as Members of the Library Council of New South Wales for a term of office commencing 1 January 2018 to 31 December 2020 (inclusive):

- (i) Professor Peter Shergold AC (reappointment under schedule 1, 1(a))
- (ii) Ms Jan Richards AM (reappointment under schedule 1, 1(b))

The Hon Don Harwin MLC  
Leader of the Government in the Legislative Council  
Minister for Resources  
Minister for Energy and Utilities  
Minister for the Arts  
Vice-President of the Executive Council

[n2018-77]

---

**MUSEUM OF APPLIED ARTS AND SCIENCES ACT 1945**

Department of Planning and Environment

Appointment of Trustees to the Museum of Applied Arts and Sciences Trust

His Excellency the Governor, with the advice of the Executive Council, has approved, pursuant to Section 4 of the *Museum of Applied Arts and Sciences Act 1945* the appointment of the following persons as trustees of the Museum of Applied Arts and Sciences Trust from 1 January 2018 to 31 December 2020 (inclusive):

- (i) Professor Barney Glover (reappointment)
- (ii) Mr Tim Ebbeck (reappointment)
- (iii) Mr Robert Cameron AO (reappointment)

The Hon Don Harwin MLC  
Leader of the Government in the Legislative Council  
Minister for Resources  
Minister for Energy and Utilities  
Minister for the Arts  
Vice-President of the Executive Council

[n2018-78]

---

**SYDNEY OPERA HOUSE TRUST ACT 1961**

Department of Planning and Environment

Appointment of Trustees to the Sydney Opera House Trust

His Excellency the Governor, with the advice of the Executive Council, has approved, pursuant to Section 6 of the *Sydney Opera House Trust Act 1961* the appointment of the following persons as trustees of the Sydney Opera House Trust from 1 January 2018 to 31 December 2020 (inclusive):

- (i) Mr Nicholas Moore (reappointment as Trustee and Chairperson)
- (ii) Ms Deborah Mailman AM (reappointment under section 6(2))
- (iii) Ms Anne Dunn (new appointment under section 6(2))
- (iv) Mr Michael Ebeid (new appointment)
- (v) Ms Kathryn Greiner AO (new appointment)
- (vi) Ms Kylie Rampa (new appointment)

The Hon Don Harwin MLC  
Leader of the Government in the Legislative Council  
Minister for Resources  
Minister for Energy and Utilities  
Minister for the Arts  
Vice-President of the Executive Council

[n2018-79]

---

---

## Planning and Environment Notices

---

---

### HERITAGE ACT 1977

#### NOTICE OF LISTING ON THE STATE HERITAGE REGISTER UNDER SECTION 37(1)(b)

Windy Station Woolshed  
Windy Road, Pine Ridge

SHR No. 01963

In pursuance of section 37(1)(b) of the *Heritage Act 1977* (NSW), the Heritage Council gives notice that the item of environmental heritage specified in Schedule “A” has been listed on the State Heritage Register in accordance with the decision of the Minister for Heritage made on 21 December 2017 to direct the listing. This listing applies to the curtilage or site of the item, being the land described in Schedule “B”.

Heritage Council of New South Wales

#### SCHEDULE “A”

The item known as Windy Station Woolshed, situated on the land described in Schedule “B”.

#### SCHEDULE “B”

All those pieces or parcels of land known as Lot 4 DP 862900 in Parish of Windy, County of Buckland shown on the plan catalogued HC 2634 in the office of the Heritage Council of New South Wales.

[n2018-80]

---

### HERITAGE ACT 1977

#### ORDER UNDER SECTION 57(2) TO GRANT SITE SPECIFIC EXEMPTIONS FROM APPROVAL

Windy Station Woolshed

SHR No. 01963

I, the Minister for Heritage, on the recommendation of the Heritage Council of New South Wales, in pursuance of section 57(2) of the *Heritage Act 1977*, do, by this my order, grant an exemption from section 57(1) of that Act in respect of the engaging in or carrying out of any activities described in Schedule “C” by the owner described in Schedule “B” on the item described in Schedule “A”.

The Hon Gabrielle Upton MP  
Minister for Heritage

Sydney, 21st Day of December 2017

#### SCHEDULE “A”

The item known as Windy Station Woolshed, situated on the land described in Schedule “B”.

#### SCHEDULE “B”

All those pieces or parcels of land known as Part Lot 4 DP 862900 in Parish of Windy, County of Buckland shown on the plan catalogued HC 2634 in the office of the Heritage Council of New South Wales.

#### SCHEDULE “C”

1. Activities associated with the ongoing use of the building for its traditional or new farming related purposes which do not impact on the heritage values and heritage fabric of the building.
2. Works and activities to facilitate temporary events, not exceeding six months, taking place in the woolshed (including the installation of signage banners, temporary lighting, free standing furniture, mobile catering facilities, video screens) provided these activities do not damage heritage fabric and are in line with the policies of a Heritage Council endorsed Conservation Management Plan or Strategy for the woolshed.
3. Maintenance, cleaning and repairs of existing fabric and structures where such activities are in accordance with the conservation policies of a Heritage Council endorsed Conservation Management Plan or Strategy.
4. All activities for maintenance, installation and alterations to building electrical and lighting services where such activities are sympathetic to, and minimise alterations to, heritage fabric and spaces and are in accordance with the conservation policies of a Heritage Council endorsed Conservation Management Plan or Strategy.

5. All activities for maintenance and alterations to the storm water disposal system, such as guttering and downpipes, where such activities do not damage, are sympathetic to and minimise alterations to heritage fabric and spaces and are in accordance with a Heritage Council endorsed Conservation Management Plan or Strategy.
6. Structural reinforcement of existing building fabric where these activities are sympathetic to, and minimise alterations to, heritage fabric and spaces and are in accordance with a Heritage Council endorsed Conservation Management Plan or Strategy.
7. All works and activities associated with the maintenance and repair of the private roadway lying within the SHR curtilage which is not considered significant fabric.
8. Repairs and maintenance to the stockyards to the north east of the woolshed which are not considered significant fabric.
9. Works and activities to upgrade the existing kitchen fit-out where this does not impact on heritage fabric in accordance with a Heritage Council endorsed Conservation Management Plan or Strategy.
10. All works necessary to make the woolshed compliant with Liverpool Plains Shire Council's disabled access regulations so long as these works do not impact on significant heritage fabric, setting or views.
11. All works necessary to make the woolshed compliant with Liverpool Plains Shire Council's fire safety regulations, except for excavation of underground water-tanks within the SHR curtilage, so long as these works do not impact on significant heritage fabric, setting or views.

[n2018-81]

---

**HERITAGE ACT 1977**

NOTICE OF LISTING ON THE STATE HERITAGE REGISTER  
UNDER SECTION 37(1)(b)

NSW Aboriginal Education Consultative Group Office and Records  
37 Cavendish St, Stanmore

SHR No. 01964

In pursuance of section 37(1)(b) of the *Heritage Act 1977* (NSW), the Heritage Council gives notice that the item of environmental heritage specified in Schedule "A" has been listed on the State Heritage Register in accordance with the decision of the Minister for Heritage made on 21 December 2017 to direct the listing. This listing applies to the curtilage or site of the item, being the land described in Schedule "B".

Heritage Council of New South Wales

**SCHEDULE "A"**

The item known as the NSW Aboriginal Education Consultative Group Office and Records, situated on the land described in Schedule "B".

**SCHEDULE "B"**

All those pieces or parcels of land known as Lot B DP 322675 in Parish of Petersham, County of Cumberland shown on the plan catalogued HC 2731 in the office of the Heritage Council of New South Wales.

[n2018-82]

---

**HERITAGE ACT 1977**

ORDER UNDER SECTION 57(2) TO GRANT SITE SPECIFIC EXEMPTIONS FROM APPROVAL

NSW Aboriginal Education Consultative Group Office and Records

SHR No. 01964

I, the Minister for Heritage, on the recommendation of the Heritage Council of New South Wales, in pursuance of section 57(2) of the *Heritage Act 1977*, do, by this my order, grant an exemption from section 57(1) of that Act in respect of the engaging in or carrying out of any activities described in Schedule "C" by the owner, mortgagee or lessee of the land described in Schedule "B" on the item described in Schedule "A".

The Hon Gabrielle Upton MP  
Minister for Heritage

Dated at Sydney, 21st Day of December 2017

### SCHEDULE “A”

The item known as the NSW Aboriginal Education Consultative Group Office and Records, situated on the land described in Schedule “B”.

### SCHEDULE “B”

All those pieces or parcels of land known as Lot B DP 322675 in Parish of Petersham, County of Cumberland shown edged heavy black on the plan catalogued HC 2731 in the office of the Heritage Council of New South Wales.

### SCHEDULE “C”

#### 1. Development requiring changes to fabric

All development requiring changes to fabric where those changes are consistent with the requirements of Marrickville Council.

#### 2. The archive.

Additions to the historic collection of educational resource material and organisation records and relocation of these to an alternative Aboriginal Education Consultative Group Office and Archive

[n2018-83]

---

### NATIONAL PARKS AND WILDLIFE ACT 1974

Yanga National Park, Yanga State Conservation Area and Yanga Nature Reserve  
Draft Plan of Management on exhibition until 23 April 2018: comments sought

The *Yanga National Park, Yanga State Conservation Area and Yanga Nature Reserve Draft Plan of Management* is on exhibition until **23 April 2018**.

The plan may be viewed at:

- National Parks and Wildlife Service (NPWS) Lower Darling Office (4 Melaleuca Street, Buronga NSW)
- National Parks and Wildlife Service (NPWS) Riverina Area Office (23 Neil St, Moama NSW)
- National Parks and Wildlife Service (NPWS) Yanga National Park – Homestead Precinct, (Sturt Highway Balranald)
- Balranald Shire Council (70 Market Street, Balranald, NSW)
- Murray River Council (22 Tualka Terrace Moulamein, NSW)
- Office of Environment and Heritage (OEH) Customer Centre (Level 14, 59–61 Goulburn St, Sydney)
- OEH ‘Have your say’ website at <https://engage.environment.nsw.gov.au/consult>

Submissions on the plan must be received by 23 April 2018 by:

- email to [npws.parkplanning@environment.nsw.gov.au](mailto:npws.parkplanning@environment.nsw.gov.au); or
- mail to: Manager Planning Evaluation and Assessment, PO Box 95, Parramatta NSW 2124.; or
- using the online form on the OEH ‘Have your say’ website.

Your comments on the draft plan may include ‘personal information’. See [www.environment.nsw.gov.au/help/privacy.htm](http://www.environment.nsw.gov.au/help/privacy.htm) for information on how we will treat any personal information you provide, and the ‘Have your say’ webpage for information on how we may use and publish comments provided in your submission. For more information, contact Andrew Growcock 0295856595.

[n2018-84]

---

---

## Roads and Maritime Notices

---

---

### MARINE SAFETY ACT 1998

#### MARINE NOTICE

##### Section 12(2)

#### REGULATION OF VESSELS – EXCLUSION ZONE

##### Location

Budgewoi Lake

##### Duration

- 9:00am to 5:00pm – Saturday 20 January to Sunday 21 January 2018
- 9:00am to 5:00pm – Saturday 3 February to Sunday 4 February 2018
- 9:00am to 5:00pm – Saturday 17 March to Sunday 18 March 2018
- 9:00am to 5:00pm – Saturday 14 April to Sunday 15 April 2018
- 9:00am to 5:00pm – Saturday 19 May to Sunday 20 May 2018

##### Detail

Water skiing races will be conducted on the navigable waters of Budgewoi Lake on the above dates.

The event will involve the use of power vessels, persons being towed at speed using tow-lines and the possibility of persons in the water from time to time, presenting a significant potential hazard to other waterway users.

An **EXCLUSION ZONE** is specified during the event at the above location and will comprise the entirety of Budgewoi Lake. This will in effect close the Lake between the above times for this event. The zone will be indicated by the presence of control vessels.

Unauthorised vessels and persons are strictly prohibited from entering the exclusion zone (the Lake).

All vessel operators and persons in the vicinity must keep a proper lookout, exercise caution and keep clear of participating vessels, support vessels and persons in the water.

Penalties may apply (section 12(5) – *Marine Safety Act 1998*)

For full details visit the Roads and Maritime Services website – [www.rms.nsw.gov.au/maritime](http://www.rms.nsw.gov.au/maritime)

Marine Notice: SY1802

Date: 10 January 2018

Rod McDonagh  
A/Manager Operations  
Delegate

[n2018-85]

---

### MARINE SAFETY ACT 1998

#### MARINE NOTICE

##### Section 12(2)

#### REGULATION OF VESSELS – EXCLUSION ZONE

##### Location

Murray River – near the township of Moama and between the following locations on the following dates:

- Saturday 10 February 2018 – between Perricoota Marina at the 1690km marker and upstream to the Victoria Park boat ramp, Echuca, at the 1712km marker; and
- Sunday 11 February 2018 – between Torrumbarry Weir at the 1630km marker and upstream to the Victoria Park boat ramp, Echuca, at the 1712km marker.

##### Duration

6.00am to 7.00pm – Saturday 10 February 2018 and Sunday 11 February 2018.



**Detail**

Competitive ski racing will be conducted on the waters of the Murray River as specified above.

The event will involve the use of high speed power vessels, persons being towed at speed using tow-lines, and persons in the water from time to time – presenting a significant potential hazard to other waterway users.

An **EXCLUSION ZONE** is specified during the event between the times specified above and will comprise the entirety of the River between the locations detailed on the respective days above. The zone will be indicated by the presence of control vessels.

Unauthorised vessels (i.e. vessels that are not already lawfully moored in the Zone) and persons are strictly prohibited from entering the exclusion zone.

In addition, pursuant to section 12(3) of the *Marine Safety Act 1998*, for the duration of the event, **SPECIAL RESTRICTIONS** are imposed on vessels that are lawfully moored within the exclusion zone as follows:

- Vessels lawfully moored within the area must remain at their moorings and must not be operated during the event.
- All houseboats are required to be moored parallel to the river bank, in a safe location well away from river bends and corners.

Occupants of moored vessels are strongly urged to vacate their vessels during the event, and if they wish to view the race, to do so from shore.

All vessel operators and persons in the vicinity must keep a proper lookout, exercise caution and keep well clear of participating vessels, support vessels and persons in the water.

Penalties may apply (section 12(5) – *Marine Safety Act 1998*)

For full details visit the Roads and Maritime Services website – [www.rms.nsw.gov.au/maritime](http://www.rms.nsw.gov.au/maritime)

Marine Notice: SO1814

Date: 15 January 2018

Vanessa Dudley  
A/Manager Operations South (Operations and Compliance)  
Delegate

[n2018-86]

---

**MARINE SAFETY ACT 1998**

MARINE NOTICE

Section 12(2)

REGULATION OF VESSELS – EXCLUSION ZONE

**Location**

Coffs Harbour – The Jetty

**Duration**

4:15pm to 5:15pm – Thursday 1 February 2018

**Detail**

As part of the Commonwealth Games, the Queen’s Baton Relay torch will be delivered by RAN helicopter over the navigable waters of Coffs Harbour at the location specified above. The area directly around this delivery site may be dangerous and hazardous while the helicopter hovers overhead.

An **EXCLUSION ZONE** is specified during the event which will be indicated by the presence of control vessels stationed on the boundary.

Unauthorised vessels and persons are strictly prohibited from entering the exclusion zone.

Vessel operators and persons in the vicinity must keep a proper lookout, exercise caution and keep well clear of the Queen’s Baton Relay delivery site at The Jetty.

Penalties may apply (section 12(5) – *Marine Safety Act 1998*)

For full details visit the Roads and Maritime Services website – [www.rms.nsw.gov.au/maritime](http://www.rms.nsw.gov.au/maritime)

Marine Notice: NH1804

Date: 15 January 2018

Darren Hulm  
A/Manager Operations North  
Delegate

[n2018-87]

---

**MARINE SAFTY ACT 1998**

MARINE NOTICE

Section 12 (2)

REGULATION OF VESSELS – EXCLUSION ZONE

**Location**

Tweed River, Murwillumbah- between the Condong and Murwillumbah Road Bridges.

**Duration**

8:30am to 4:00 pm on the following dates:

- Saturday 3 February 2018;
- Sunday 4 February 2018; and
- Sunday 18 March 2018

**Detail**

A rowing regatta will be conducted on the navigable waters of the Tweed River at the location specified above. There will be support vessels on the water to manage the event.

An **EXCLUSION ZONE** is specified during the event. The area will be marked by buoys at the location above and patrolled by control vessels.

All vessel operators and persons in the vicinity must keep a proper lookout, keep well clear of competing and support vessels and should exercise caution.

Unauthorised vessels and persons are prohibited from entering the exclusion zone during the times specified above.

A **TRANSIT LANE** will be established along the southern foreshore, within which control vessels may, at times during the event, authorise local vessel traffic to pass through and within the confines of the transit lane.

**SPECIAL RESTRICTIONS** apply to vessels using the transit lane. Vessels navigating the transit lane must do so at a speed not exceeding 4 knots, must not produce excessive wash, and must comply with any direction given by an authorised officer.

Penalties may apply (section 12(5) – *Marine Safety Act 1998*)

For full details visit the Roads and Maritime Services website – [www.rms.nsw.gov.au/maritime](http://www.rms.nsw.gov.au/maritime)

Marine Notice NH17129

Date: 15 January 2018

Darren Hulm  
A/Manager Operations North  
Delegate

[n2018-88]

---

**MARINE SAFETY ACT 1998**

MARINE NOTICE

Section 12(2)

REGULATION OF VESSELS – EXCLUSION ZONE

**Location**

Murray River – near the locality of Moama and:

- On Saturday 20 January 2018 – between the land-based features of the Cobb Highway Bridge downstream to the Riverside Dock, and

- On Sunday 21 January 2018 – between the land-based features of The Port of Echuca and downstream to the Merool Bend.

**Duration**

5.45pm to 6.30pm – Saturday 20 January 2018, and  
9.15am to 11.00pm – Sunday 21 January 2018.

**Detail**

The swimming leg of a triathlon will be conducted on the waters of the Murray River as specified above.

An **EXCLUSION ZONE** is specified during the event. The zone will be marked by buoys and patrolled by control vessels.

All vessel operators and persons in the vicinity should keep a proper lookout, keep well clear of competing swimmers and support vessels, and exercise extreme caution.

Unauthorised vessels and persons are strictly prohibited from entering the exclusion zone which will be patrolled by official vessels.

Penalties may apply (section 12(5) – *Marine Safety Act 1998*).

For full details visit the Roads and Maritime Services website – [www.rms.nsw.gov.au/maritime](http://www.rms.nsw.gov.au/maritime)

Marine Notice: SO1807

Date: 16 January 2018

Vanessa Dudley  
A/Manager Operations South (Operations and Compliance)  
Delegate

[n2018-89]

---

**MARINE SAFETY ACT 1998**

MARINE NOTICE

Section 12(2)

REGULATION OF VESSELS – EXCLUSION ZONE

**Location**

Edward River, Deniliquin – near the locality of the Deniliquin Boat Club, on Riverview Drive Deniliquin as follows:

- Upstream 300 metres of the Deniliquin Boat Club and adjacent to the land based feature of the Big 4 Deniliquin Holiday Park, and
- Downstream 300 metres of the Deniliquin Boat Club and adjacent to the land based feature of the Warbreccan Homestead.

**Duration**

8:30am to 6:00pm – Saturday 20 January 2018

**Detail**

A wakeboarding competition will be conducted on the waters of the Edward River, as specified above. The event will involve active power vessels and persons being towed at speed with the possibility of persons in the water from time to time – presenting a significant potential hazard to other waterway users.

An **EXCLUSION ZONE** is specified during the event at the above location, which will be marked by buoys and patrolled by control vessels.

All vessel operators and persons using the waters in the vicinity of the event should keep a proper lookout, keep well clear of competing and support vessels, and exercise extreme caution.

Unauthorised vessels and persons are strictly prohibited from entering the exclusion zone.

A **TRANSIT LANE** will be established, within which control vessels may, at times during the event, authorise local vessel traffic to pass through and within the confines of the transit lane.

**SPECIAL RESTRICTIONS** apply to vessels using the transit lane. Vessels navigating through the transit lane must do so at a speed not exceeding 4 knots, must produce no wash, and must comply with any direction given by control vessels.

Penalties may apply (section 12(5) – *Marine Safety Act 1998*)

For full details visit the Roads and Maritime Services website – [www.rms.nsw.gov.au/maritime](http://www.rms.nsw.gov.au/maritime)

Marine Notice: SO1818

Date: 16 January 2018

Vanessa Dudley  
A/Manager Operations South (Operations and Compliance)  
Delegate

[n2018-90]

---

**MARINE SAFETY ACT 1998**

MARINE NOTICE

Section 12(2)

REGULATION OF VESSELS – EXCLUSION ZONE

**Location**

Wollongong Harbour – in the vicinity adjoining Tasman Sea as follows:

- Along the northern shoreline of Flagstaff Point and the Wollongong Harbour break wall; to
- the shoreline of North Wollongong beach; to
- the North Wollongong Beach reef; to
- the location 500 metres east and 500 metres north of Flagstaff Point.

**Duration**

- 1.45pm to 2.30pm – Friday 26 January 2018; and
- 6.35pm to 7.20pm – Friday 26 January 2018.

**Detail**

An aircraft acrobatic display will be conducted in the air space over the navigable waters of the Tasman Sea and Wollongong Harbour as specified above.

An **EXCLUSION ZONE** is specified during the event at the above location. As a result, vessel operations in and out of Wollongong Harbour will be restricted between the above times for the event. The zone will be indicated by the presence of control vessels.

Unauthorised vessels and persons are strictly prohibited from entering the exclusion zone.

All vessel operators and persons using the waters specified above should keep a proper lookout, keep well clear of support vessels, watch for low flying overhead aircraft, and exercise extreme caution when navigating near the exclusion zone.

Penalties may apply (section 12(5) – *Marine Safety Act 1998*).

For full details visit the Roads and Maritime Services website – [www.rms.nsw.gov.au/maritime](http://www.rms.nsw.gov.au/maritime)

Marine Notice: SO1817

Date: 16 January 2018

Vanessa Dudley  
A/Manager Operations South (Boating Operations and Compliance)  
Delegate

[n2018-91]

---

**MARINE SAFETY ACT 1998**

MARINE NOTICE

Section 12(2)

REGULATION OF VESSELS – EXCLUSION ZONE

**Location**

Bate Bay, Cronulla

**Duration**

8:30pm to 9:45pm, Friday 26 January 2018

**Detail**

A Fireworks display is to be held on Bate Bay for the above duration.

An **EXCLUSION ZONE** is specified during the event. The exclusion zone will extend in a 150 metre radius around a fireworks barge. The barge itself will be positioned in Bate Bay, 300m east of North Cronulla Beach.

Unauthorised vessels and persons are strictly prohibited from entering the exclusion zone, which will be indicated by control vessels patrolling and stationed on the boundary.

Penalties may apply (section 12(5) – *Marine Safety Act 1998*)

For full details visit the Roads and Maritime Services website – [www.rms.nsw.gov.au/maritime](http://www.rms.nsw.gov.au/maritime)

Marine Notice: SY1749

Date: 17 January 2018

Andy Robertson  
Manager Operations  
Botany Bay/Port Hacking

[n2018-92]

---

**MARINE SAFETY ACT 1998**

MARINE NOTICE

Section 12(2)

REGULATION OF VESSELS – EXCLUSION ZONE AND SPECIAL RESTRICTIONS

**Location**

Sydney Harbour – Farm Cove

**Duration**

From 8:00am to 11:00am, 20 January 2018

**Detail**

A swim event will be staged in the waters of Farm Cove in a designated area south of a line between the Sydney Opera House and Mrs Macquaries Point.

An **EXCLUSION ZONE** in the waters of Farm Cove is specified for the activity to support safety for event competitors and vessel operators. The Exclusion Zone will be marked by a perimeter of lit yellow buoys. The limits of the Exclusion Zone are as shown on the event map (see below for details). The buoys will be in place along the Exclusion Zone boundary from 4:30pm Friday 19 January to 2:30pm 20 January 2018.

Unauthorised vessels and persons are strictly prohibited from entering the Exclusion Zone, which will be patrolled by Roads and Maritime vessels.

Penalties may apply (section 12(5) – *Marine Safety Act 1998*)

**Special Restrictions**

Pursuant to section 12(3) of the *Marine Safety Act 1998*, special restrictions apply to all vessels navigating in the vicinity of the Exclusion Zone as follows:

- A 6 knot speed limited zone and a “minimum wash” zone will apply within 200 metres of the Exclusion Zone during the times listed above;

Penalties may apply (section 12(5) – *Marine Safety Act 1998*).

**Maps and Charts Affected**

RMS Boating Map – 9D

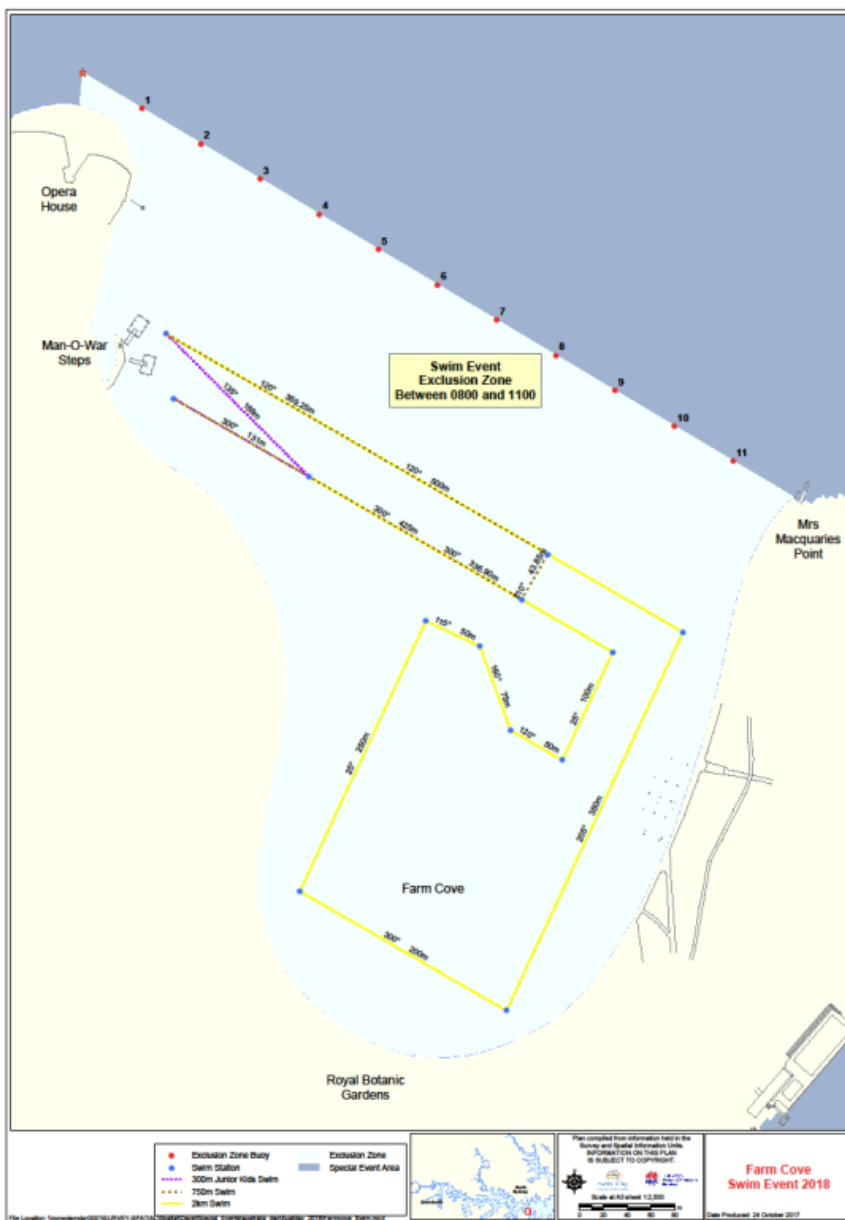
RAN Hydrographic Chart AUS 200

For full details visit the Roads and Maritime Services website – [www.rms.nsw.gov.au/maritime](http://www.rms.nsw.gov.au/maritime)

Marine Notice SE1801

Date: 17 January 2018

Drew Jones  
 Senior Special Aquatic Events Officer  
 Delegate



[n2018-93]

**MARINE SAFETY ACT 1998**

**MARINE NOTICE**

Section 12(2)

REGULATION OF VESSELS – EXCLUSION ZONES AND SPECIAL RESTRICTIONS

**Location – Regulated Area**

Sydney Harbour – from Goat Island to Steele Point, Vacluse, comprising all navigable waters bounded by imaginary lines drawn from:

- Balls Head to Balmain immediately West of Goat Island (inclusive of Darling Harbour) and;
- Bradleys Head Light to Steele Point.

## Duration

From 3:00pm Thursday 25 January 2018 to 10:00pm, Friday 26 January 2018

## Detail

The annual Australia Day Celebration on Sydney Harbour – a Special Event conducted by the Department of Premier and Cabinet and Sydney Festival – will take place within the **Regulated Area** specified above. Due to the potential to affect the safety of navigation and in order to safeguard the special event, Roads and Maritime Services will establish Special Restrictions and Exclusion Zones.

From 3:00pm on Thursday 25 January 2018 a number of barges will be positioned in Sydney Cove in preparation for events on Australia Day, 26 January 2018. Authorised vessel operators are to navigate with extreme caution within Sydney Cove and comply with advice and instructions from Maritime Control, Sydney Ports VTS and RMS control vessels. Entry and exit to Sydney Cove and wharf restrictions will apply whenever large barges are being maneuvered within Sydney Cove.

Pursuant to section 12(3) of the *Marine Safety Act 1998*, details are as follows:

## Exclusion Zones

Strict Exclusion Zones will be established within the Regulated Area at designated times and locations (see detail below) which will be enforced by Roads and Maritime, Police, and other control vessels and may also be marked by a perimeter of yellow buoys.

- (a) **10:00am to 2:00pm** – a moving zone forming a perimeter 200 metres ahead and 60 metres either side or astern of HMAS Canberra while the vessel is underway between the Sydney Harbour Bridge and Garden Island;
- (b) **10:45am to 11:30am** – a moving zone forming a perimeter of 50 metres around the bow, sides and stern of the “Emerald Class” ferries participating in the ‘Ferrython’ as they navigate on a course between Fort Denison, Rose Bay and the Sydney Harbour Bridge;
- (c) **11:45am to 12:30pm** – between imaginary lines drawn between Milsons Point and Dawes Point under the Sydney Harbour Bridge, and the Sydney Opera House to Kirribilli Point and Kirribilli Point to Milsons Point including Sydney Cove – for the ‘Salute to Australia’ and the ‘Tug and Yacht Ballet’. This zone will be marked by the presence of Roads and Maritime and other control vessels;
- (d) **1:00pm to 2:00pm** – a moving zone forming a perimeter of 50 metres around the bow, sides and stern of the Tall Ships participating in the ‘Tall Ships Race’ as they sail on a course from Bradleys Head north of Fort Denison to the Sydney Harbour Bridge;
- (e) **1:45pm to 2:15pm** – inside Farm Cove between Bennelong Point and Mrs Macquaries Point during the ‘Parachute and Flag Drop’. This zone will be marked by the presence of Roads and Maritime control vessels and yellow boundary buoys;
- (f) **7:00pm to 10:00pm** – the entirety of Sydney Cove. All authorised vessels already within the cove must follow the directions from Maritime Control and control vessels and if moving, must pass at a safe distance from the fireworks barges and tugs or remain alongside. No unauthorised vessels will be able to enter or depart Sydney Cove between these times;
- (g) **All times** – Within 500 metres ahead and 30 metres either side or astern of any seagoing ships while underway, and within 30 metres of ships when at anchor or moored within Sydney Harbour.

*NO UNAUTHORISED VESSELS OR PERSONS* are to enter the Exclusion Zones under any circumstances. The Area will be patrolled by Police, Roads and Maritime, and other official control vessels.

Times may be extended without notice by Roads and Maritime in the interests of public safety. Entry of unauthorised vessels or persons into the Exclusion Zone renders the vessel operator or person liable to an offence.

*Note: Provided that vessels stay outside the Exclusion Zones (and despite any existing signposted regulation), vessels are permitted to stop or drift within the Sydney Harbour Transit Zone between 11:45am and 12:30pm. In addition, a buoyed spectator area will be established in the vicinity of Jeffrey Street Wharf to allow registered Harbour Parade entrants and small vessels to anchor or drift so that spectators can watch the events.*

## Special Restrictions

Within the Regulated Area, the following Special Restrictions apply:

- (a) A **Speed Limit of 6 knots** applies to all non-participating vessels within 200m of any Exclusion Zone for the duration of the events. Maximum Penalty \$1,100.00 (*Marine Safety Act 1998* s.12(5));
- (b) A **“No Wash Zone”** will be enforced within 200m of any Exclusion Zone for the duration of the events. Maximum Penalty \$1,100.00 (*Marine Safety Act 1998* s 12(5)).

- (c) Certain commuter and commercial vessel wharves will not be accessible during various Exclusion Zone times. Operators should check availability prior to approaching a wharf.

**Directions**

Roads and Maritime advises:

- 1) Persons within the vicinity of the Regulated Area **must** comply with any directions given by a Boating Safety Officer or Police Officer in relation to marine safety. Failure to comply with any such direction is an offence (*Marine Safety Act 1998* s.15A – Maximum Penalty \$3,300.00).
- 2) Any vessel operator or person
  - breaching the Special Restrictions detailed above; or
  - entering an Exclusion Zone

is liable to an offence (*Marine Safety Act 1998* s.12(5) – Maximum Penalty \$1,100.00)

**Maps and Charts Affected**

Roads and Maritime Boating Map – 9D and 9G

RAN Hydrographic Chart AUS 200, AUS 201 AUS 202

For full details visit the Roads and Maritime Services website – [www.rms.nsw.gov.au/maritime](http://www.rms.nsw.gov.au/maritime)

Marine Notice SE1802

Date: 17 January 2018

Drew Jones  
Senior Special Aquatic Events Officer  
Delegate

[n2018-94]

---

**MARINE SAFETY ACT 1998**

MARINE NOTICE

Section 12(2)

REGULATION OF VESSELS – EXCLUSION ZONE

**Location**

Hastings River, Port Macquarie as follows:

- The shoreline adjacent to McInherney Park, at a location seaward approximately 150 metres from the shore towards the north.

**Duration**

10.30am to 12.30pm – Friday 26 January 2018

**Detail**

Various aquatic activities will be conducted on navigable waters of the Hastings River as specified above.

An **EXCLUSION ZONE** is specified during the event. The area will be indicated by buoys and control vessels stationed on the boundary.

Unauthorised vessels and persons are strictly prohibited from entering the exclusion zone.

Vessel operators and persons in the vicinity must keep a proper lookout, exercise caution and keep well clear of the exclusion zone and control vessels.

Penalties may apply (section 12(5) – *Marine Safety Act 1998*)

For full details visit the Roads and Maritime Services website – [www.rms.nsw.gov.au/maritime](http://www.rms.nsw.gov.au/maritime)

Marine Notice: NH1800A

Date: 17 January 2018

Darren Hulm  
A/Manager Operations North  
Delegate

[n2018-95]



**MARINE SAFETY ACT 1998**

MARINE NOTICE

Section 12(2)

REGULATION OF VESSELS – EXCLUSION ZONE

**Location**

Hastings River, Port Macquarie as follows:

- The shoreline of the Hastings River at a location between Port Macquarie Marine Rescue boat ramp and the start of the southern Break wall (in line with Hay St), seaward approximately 150 metres from the shore towards the north.

**Duration**

9.30am to 2.30pm – Friday 26 January 2018

**Detail**

Various aquatic activities will be conducted on navigable waters of the Hastings River as specified above.

An **EXCLUSION ZONE** is specified during the event. The area will be indicated by buoys and control vessels stationed on the boundary.

Unauthorised vessels and persons are strictly prohibited from entering the exclusion zone.

Vessel operators and persons in the vicinity must keep a proper lookout, exercise caution and keep well clear of the exclusion zone and control vessels.

Penalties may apply (section 12(5) – *Marine Safety Act 1998*)

For full details visit the Roads and Maritime Services website – [www.rms.nsw.gov.au/maritime](http://www.rms.nsw.gov.au/maritime)

Marine Notice: NH1800

Date: 17 January 2018

Darren Hulm

A/Manager Operations North

Delegate

[n2018-96]

---

**ROADS ACT 1993**

Order – Sections 46, 49, 54 and 67

Eurobodalla Shire Council Area

Declaration as Controlled Access Road of part of the Princes Highway at Central Tilba

I, the Minister for Roads, Maritime and Freight, pursuant to Sections 46, 49, 54 and 67 of the *Roads Act 1993*, by this order -

1. dedicate as public road the land described in Schedules 1 and 2 under;
2. declare to be a main road the said public road described in Schedule 2 and the public road described in Schedule 3 under;
3. declare to be a controlled access road the said main road described in Schedules 2 and 3;
4. declare that access to the said controlled access road is restricted; and
5. specify in Schedule 4 under, the points along the controlled access road at which access may be gained to or from other public roads.

HON MELINDA PAVEY MP

Minister for Roads, Maritime and Freight

**Schedule 1**

All those pieces or parcels of land situated in the Eurobodalla Shire Council area, Parish of Narooma and County of Dampier, shown as:

Lot 443 Deposited Plan 1157589;

Lots 2 and 3 Deposited Plan 1129478; and

Lot 23 Deposited Plan 1152373.

The above Lots are shown in RMS Plan 0001 145 AC 4012.

#### **Schedule 2**

All those pieces or parcels of land situated in the Eurobodalla Shire Council area, Parish of Narooma and County of Dampier, shown as:

Lots 401 and 403 to 405 inclusive Deposited Plan 1149431;

Lots 1406 to 1411 inclusive Deposited Plan 1196155;

Lot 442 Deposited Plan 1157589;

Lot 1 Deposited Plan 1129478;

Lots 15 to 19 inclusive Deposited Plan 1152373; and

Lots 41 to 44 inclusive, 46 and 47 Deposited Plan 1197438.

The above Lots are shown in RMS Plan 0001 145 AC 4012.

#### **Schedule 3**

All those pieces or parcels of public road situated in the Eurobodalla Shire Council area, Parish of Narooma and County of Dampier, shown as:

Lot 1412 Deposited Plan 1196155;

Lot 45 Deposited Plan 1197438; and

Lots 1, 2 and 3 in RMS Plan 0001 145 AC 4012.

The above Lots are shown in RMS Plan 0001 145 AC 4012.

#### **Schedule 4**

Between the points A and B;

between the points C and D;

between the points E and F;

between the points G and H;

between the points J and K; and

between the points L and M; all shown in RMS Plan 0001 145 AC 4012.

(RMS Papers: SF2017/129775)

[n2018-97]

---

### **ROADS ACT 1993**

#### Notice of Dedication of Land as Public Road at West Ballina in the Ballina Council Area

Roads and Maritime Services, by its delegate, dedicates the land described in the schedule below as public road under section 10 of the *Roads Act 1993*.

K DURIE

Manager, Compulsory Acquisition & Road Dedication

Roads and Maritime Services

#### **Schedule**

All that piece or parcel of land situated in the Ballina Council area, Parish of Ballina and County of Rous, shown as Lot 13 Deposited Plan 1233125.

(RMS Papers: SF2017/239784)

[n2018-98]

---

## Mining and Petroleum Notices

---

### COAL MINE SUBSIDENCE COMPENSATION ACT 2017

#### ORDER UNDER SECTION 24

I, Brendan Killen, Acting Chief Executive of Subsidence Advisory NSW, pursuant to section 24 of the *Coal Mine Subsidence Compensation Act 2017* (“the Act”) hereby exempt the following classes of work from the operation of section 21 of the Act, effective 15 January 2018:

1. Works constructed within areas subject to Surface Development Guideline 8 – No Restrictions (“Guideline 8”) published on the Subsidence Advisory NSW (“SA NSW”) website that are certified by a Principal Certifying Authority appointed under section 109E of the *Environmental Planning and Assessment Act 1979* as compliant with Guideline 8 published on the SA NSW website.
2. Residential construction within areas subject to Surface Development Guideline 6 – Active Mining Areas – Minimal Predicted Subsidence Impact (“Guideline 6”) published on the SA NSW website provided that it is:
  - (a) Single-storey or two-storey clad frame or masonry veneer residential building, erected on reinforced concrete footings and slabs, designed and constructed to comply with Australian Standard AS2870 for the relevant site classification (ignoring Class “P” for a Mine Subsidence site); and
  - (b) Masonry is articulated in accordance with the most up-to-date editions of Australian Standard AS3700 and AS4773; and
  - (c) Limited to a maximum length of 30 metres and a maximum footprint area of 500 square metres; and
  - (d) Certified by a Principal Certifying Authority appointed under section 109E of the *Environmental Planning and Assessment Act 1979* as compliant with Guideline 6 published on the SA NSW website.
3. Residential construction within areas subject to Surface Development Guideline 5 – Active Mining Areas – Moderate Predicted Subsidence Impact (“Guideline 5”) published on the SA NSW website provided that it is not within a flood-prone area and is:
  - (a) Single-storey or two-storey, clad frame or articulated brick veneer residential building, erected on reinforced concrete footings/slabs, designed and constructed to comply with Australian Standard AS 2870 for a minimum Class H2 site (ignoring Class “P” for a Mine Subsidence site); and
  - (b) Limited to a maximum length of 24 metres and a maximum footprint of 400m<sup>2</sup>;
  - (c) Designed and constructed in accordance with the current editions of Australian Standards AS1684, AS2870, AS3600, AS3700, AS4773, the Building Code of Australia, any other relevant applicable Australian Standards and good engineering practice; and
  - (d) Masonry is articulated in accordance with the current editions of Australian Standards AS3700 and AS4773; and
  - (e) The gradients on wet area floors, roof gutters and drainage are increased to ensure that they remain serviceable when subjected to 7mm/m tilts; and
  - (f) Flexible joints in pipes are designed in accordance with Australian Standard AS3500 to minimum H2 site classification specifications to accommodate curvature in any plane, coupled with tensile or compressive strain; and
  - (g) Branches, bends and valve stems are protected by flexible wrapping or shrouds to prevent shearing of the pipes as ground movement occurs; and
  - (h) Flexible joints are provided where pipes are connected to chambers or gullies; and
  - (i) There are no internal or integrated retaining walls; and
  - (j) Certified by a Principal Certifying Authority appointed under section 109E of the *Environmental Planning and Assessment Act 1979* as compliant with Guideline 5 published on the SA NSW website.
4. Residential construction, including in-ground concrete and fibreglass pools and retaining walls, within areas subject to Surface Development Guideline 3 – Remote Subsidence Risk Abandoned Workings (“Guideline 3”) published on the SA NSW website provided that it is:
  - (a) Up to four storeys (including any single level basement), designed and constructed in accordance with the current editions of Australian Standard AS1684, AS 2870, AS3600,

- AS3700, AS4773, the Building Code of Australia, any other relevant applicable Australian Standards and good engineering practice (ignoring Class “P” for a Mine Subsidence site); and
- (b) Masonry is articulated in accordance with the current editions of Australian Standards AS3700 and AS4773; and
  - (c) Certified by a Principal Certifying Authority appointed under section 109E of the *Environmental Planning and Assessment Act 1979* as compliant with Guideline 3 published on the SA NSW website.
5. Residential construction, including in-ground and above-ground concrete and fibreglass pools and retaining walls designed and constructed in accordance with relevant applicable Australian Standards and good engineering practice, within areas subject to Surface Development Guideline 2 – Potential Subsidence Risk Abandoned Workings (“Guideline 2”) published on the website of SA NSW provided that it is:
- (a) Single or two storey brick veneer residential development erected on reinforced concrete footings/slab to comply with Australian Standard AS 2870; and
  - (b) Limited to a maximum length of 24 metres and maximum width of 18 metres; and
  - (c) Designed and constructed in accordance with the current editions of Australian Standard AS1684, AS 2870, AS3600, AS3700, AS4773, the Building Code of Australia, any other relevant applicable Australian Standards and good engineering practice (ignoring Class “P” for a Mine Subsidence site); and
  - (d) Masonry is articulated in accordance with the current editions of Australian Standards AS3700 and AS4773; and
  - (e) Does not include basements, suspended slabs or masonry internal walls; and
  - (f) Certified by a Principal Certifying Authority appointed under section 109E of the *Environmental Planning and Assessment Act 1979* as compliant with Guideline 2 published on the SA NSW website.

DATED this 15th day of January 2018

Brendan Killen  
A/Chief Executive  
Subsidence Advisory NSW  
By delegation from the Mine Subsidence Board

[n2018-99]

---

## WORK HEALTH AND SAFETY (MINES AND PETROLEUM SITES) EXEMPTION (HEALTH MONITORING) 2018

under the Work Health and Safety Regulation 2017

I, Tony Linnane, Director Mine Safety Operations, having delegated authority from the Secretary of the Department of Planning and Environment as the Regulator under the *Work Health and Safety Act 2011* in relation to a mine or petroleum site, pursuant to clause 684 of the *Work Health and Safety Regulation 2017*, grant the following exemption.

Dated this 15th day of January 2018.

Tony Linnane  
Director Mine Safety Operations  
Department of Planning and Environment

### 1 Name

This Exemption is the Work Health and Safety (Mines and Petroleum Sites) Exemption (Health Monitoring) 2018.

### 2 Commencement

This Exemption commences on 1 February 2018 and has effect until 31 January 2019.

### 3 Interpretation

In this Exemption:

*the Regulation* means the *Work Health and Safety (Mines and Petroleum Sites) Regulation 2014*.

Terms used in this Exemption have the same meaning as in the *Work Health and Safety Act 2011*, *Work Health and Safety Regulation 2017*, *Work Health and Safety (Mines and Petroleum Sites) Act 2013* and the Regulation.

#### **4 Exemption**

This Exemption is a class exemption made by the regulator on its own initiative.

This Exemption applies to health monitoring of workers required under the Regulation.

A mine operator of a mine and a person conducting a business or undertaking who engages a worker to carry out work at a mine, or who commissions health monitoring for a worker at a mine, are exempt from the requirements of Part 3 of the Regulation.

#### **5 Exemption does not affect other requirements**

Nothing in this exemption affects any other applicable requirement imposed by law in relation to the matters this Exemption applies to.

[n2018-100]

---

NOTICE is given that the following applications have been received:

#### **EXPLORATION LICENCE APPLICATIONS**

(T18-1004)

No. 5624, BROKEN HILL PROSPECTING LIMITED (ACN 003 453 503), area of 7 units, for Group 1, Group 2 and Group 5, dated 10 January, 2018. (Broken Hill Mining Division).

(T18-1005)

No. 5625, HAVERFORD HOLDINGS PTY LTD (ACN 142660553), area of 30 units, for Group 1, dated 15 January, 2018. (Orange Mining Division).

(T18-1006)

No. 5626, NEW AGE RESOURCES PTY LTD (ACN 622 780 072), area of 62 units, for Group 1, dated 15 January, 2018. (Orange Mining Division).

(T18-1007)

No. 5627, HAVERFORD HOLDINGS PTY LTD (ACN 142660553), area of 68 units, for Group 1, dated 15 January, 2018. (Orange Mining Division).

#### **MINING LEASE APPLICATION**

(T18-1002)

No. 553, KEVIN PATRICK DWYER, area of about 2.81 hectares, for the purpose of ancillary mining activity, dam and opal puddling, dated 10 January, 2018. (Lightning Ridge Mining Division).

The Honourable Don Harwin MLC  
Minister for Resources

[n2018-101]

---

NOTICE is given that the following applications for renewal have been received:

(V18-0248)

Authorisation No. 206, TAHMOOR COAL PTY LTD (ACN 076 663 968), area of 3808 hectares. Application for renewal received 16 January, 2018.

(V18-0181)

Exploration Licence No. 4474, SOC1 PTY LTD (ACN 158 330 646), area of 4 units. Application for renewal received 8 January, 2018.

(V18-0239)

Exploration Licence No. 5922, LFB RESOURCES NL (ACN 073 478 574), area of 179 units. Application for renewal received 15 January, 2018.

(V18-0227)

Exploration Licence No. 7020, ALKANE RESOURCES LTD (ACN 000 689 216), area of 25 units. Application for renewal received 12 January, 2018.

(T17-1214)

Exploration Licence No. 7424, MODELING RESOURCES PTY LTD (ACN 169 211 876), area of 22 units. Application for renewal received 22 November, 2017.

(V18-0158)

Exploration Licence No. 7679, SUGEC RESOURCES LIMITED (ACN 162 033 098), area of 32 units. Application for renewal received 8 January, 2018.

(V18-0144)

Exploration Licence No. 8497, WATTLE RESOURCES PTY LIMITED (ACN 138383114), area of 29 units. Application for renewal received 10 January, 2018.

The Honourable Don Harwin MLC  
Minister for Resources

[n2018-102]

---

### RENEWAL OF CERTAIN AUTHORITIES

Notice is given that the following authorities have been renewed:

(V17-8002)

Exploration Licence No. 5497, DONALDSON COAL PTY LTD (ACN 073 088 945), County of Northumberland, Map Sheet (9232), area of 4687 hectares, for a further term until 21 July, 2019. Renewal effective on and from 20 November, 2017.

(V17-4290)

Exploration Licence No. 6428, RENISON COAL PTY LTD (ACN 100 163 942) AND NORTHERN ENERGY CORPORATION LIMITED (ACN 081 244 395), County of Arrawatta, Map Sheet (9139), area of 585 hectares, for a further term until 7 June, 2019. Renewal effective on and from 20 November, 2017.

(V17-0148)

Exploration Licence No. 8224, WHITEHAVEN COAL MINING LIMITED (ACN 086 426 253), County of Nandewar, Map Sheet (8936), area of 1281 hectares, for a further term until 10 January, 2021. Renewal effective on and from 16 November, 2017.

The Honourable Don Harwin MLC  
Minister for Resources

[n2018-103]

---

## Crown Land Notices

1300 886 235 [www.crownland.nsw.gov.au](http://www.crownland.nsw.gov.au)

---

### NOTIFICATION OF CLOSING OF A ROAD

In pursuance of the provisions of the *Roads Act 1993*, the road hereunder described is closed and the lands comprised therein cease to be public road and the rights of passage and access that previously existed in relation to the road is extinguished. Upon closing, title to the land, comprising the former public road, vests in the body specified in the Schedule hereunder.

The Hon Paul Toole, MP  
Minister for Lands and Forestry

#### DESCRIPTION

*Parish – Denny; County – Sturt*  
*Land District – Hillston; LGA – Carrathool*

Road Closed: Lot 1 DP 1236808

File No: 17/08049

#### SCHEDULE

On closing, the land within Lot 1 DP 1236808 remains vested in the State of New South Wales as Crown land.

[n2018-104]

---

### NOTIFICATION OF CLOSING OF A ROAD

In pursuance of the provisions of the *Roads Act 1993*, the road hereunder described is closed and the lands comprised therein cease to be public road and the rights of passage and access that previously existed in relation to the road is extinguished. Upon closing, title to the land, comprising the former public road, vests in the body specified in the Schedule hereunder.

The Hon Paul Toole, MP  
Minister for Lands and Forestry

#### DESCRIPTION

*Parish – Denny; County – Sturt*  
*Land District – Hillston; LGA – Carrathool*

Road Closed: Lot 2 DP 1236809

File No: 17/08049

#### SCHEDULE

On closing, the land within Lot 2 DP 1236809 remains vested in the State of New South Wales as Crown land.

[n2018-105]

---

### NOTIFICATION OF CLOSING OF A ROAD

In pursuance of the provisions of the *Roads Act 1993*, the road hereunder described is closed and the lands comprised therein cease to be public road and the rights of passage and access that previously existed in relation to the road is extinguished. Upon closing, title to the land, comprising the former public road, vests in the body specified in the Schedule hereunder.

The Hon Paul Toole, MP  
Minister for Lands and Forestry

#### DESCRIPTION

*Parish – Coco; County – Roxburgh*  
*Land District – Rylstone; LGA – Lithgow*

Road Closed: Lots 1-2 DP 1236720

File No: 17/08446

**SCHEDULE**

On closing, the land within Lots 1-2 DP 1236720 remains vested in the State of New South Wales as Crown land.

[n2018-106]

---

**NOTIFICATION OF CLOSING OF A ROAD**

In pursuance of the provisions of the *Roads Act 1993*, the road hereunder described is closed and the lands comprised therein cease to be public road and the rights of passage and access that previously existed in relation to the road is extinguished. Upon closing, title to the land, comprising the former public road, vests in the body specified in the Schedule hereunder.

The Hon Paul Toole, MP  
Minister for Lands and Forestry

**DESCRIPTION**

*Parish – Bullinda; County – Lincoln*  
*Land District – Dunedoo Central; LGA – Warrumbungle*

Road Closed: Lot 1 DP 1236722

File No: 17/08336

**SCHEDULE**

On closing, the land within Lot 1 DP 1236722 remains vested in the State of New South Wales as Crown land.

[n2018-107]

---

**NOTIFICATION OF CLOSING OF A ROAD**

In pursuance of the provisions of the *Roads Act 1993*, the road hereunder described is closed and the lands comprised therein cease to be public road and the rights of passage and access that previously existed in relation to the road is extinguished. Upon closing, title to the land, comprising the former public road, vests in the body specified in the Schedule hereunder.

The Hon Paul Toole, MP  
Minister for Lands and Forestry

**DESCRIPTION**

*Parish – Lawrence; County – Clarence*  
*Land District – Grafton; LGA – Clarence Valley*

Road Closed: Lot 1 DP 1236029

File No: 16/07050

**SCHEDULE**

On closing, the land within Lot 1 DP 1236029 remains vested in the State of New South Wales as Crown land.

[n2018-108]

---

**NOTIFICATION OF CLOSING OF A ROAD**

In pursuance of the provisions of the *Roads Act 1993*, the road hereunder described is closed and the lands comprised therein cease to be public road and the rights of passage and access that previously existed in relation to the road is extinguished. Upon closing, title to the land, comprising the former public road, vests in the body specified in the Schedule hereunder.

The Hon Paul Toole, MP  
Minister for Lands and Forestry

**DESCRIPTION**

*Parish – Merrygoen; County – Napier*  
*Land District – Dunedoo Central; LGA – Warrumbungle*

Road Closed: Lot 1 DP 1237288

File No: 17/08041



**SCHEDULE**

On closing, the land within Lot 1 DP 1237288 remains vested in the State of New South Wales as Crown land.

[n2018-109]

---

**NOTIFICATION OF CLOSING OF A ROAD**

In pursuance of the provisions of the *Roads Act 1993*, the road hereunder described is closed and the lands comprised therein cease to be public road and the rights of passage and access that previously existed in relation to the road is extinguished. Upon closing, title to the land, comprising the former public road, vests in the body specified in the Schedule hereunder.

The Hon Paul Toole, MP  
Minister for Lands and Forestry

**DESCRIPTION**

*Parish – March; County – Wellington*  
*Land District – Orange; LGA – Cabonne*

Road Closed: Lot 102 DP 875222

File No: 16/01936 RS

**SCHEDULE**

On closing, the land within Lot 102 DP 875222 remains vested in the State of New South Wales as Crown land.

[n2018-110]

---

**NOTIFICATION OF CLOSING OF A ROAD**

In pursuance of the provisions of the *Roads Act 1993*, the road hereunder described is closed and the lands comprised therein cease to be public road and the rights of passage and access that previously existed in relation to the road is extinguished. Upon closing, title to the land, comprising the former public road, vests in the body specified in the Schedule hereunder.

The Hon Paul Toole, MP  
Minister for Lands and Forestry

**DESCRIPTION**

*Parish – Yarrobil; County – Bligh*  
*Land District – Wellington; LGA – Mid-Western Regional*

Road Closed: Lot 1 DP 1236925

File No: 17/04822

**SCHEDULE**

On closing, the land within Lot 1 DP 1236925 remains vested in the State of New South Wales as Crown land.

[n2018-111]

---

**NOTIFICATION OF CLOSING OF A ROAD**

In pursuance of the provisions of the *Roads Act 1993*, the road hereunder described is closed and the lands comprised therein cease to be public road and the rights of passage and access that previously existed in relation to the road is extinguished. Upon closing, title to the land, comprising the former public road, vests in the body specified in the Schedule hereunder.

The Hon Paul Toole, MP  
Minister for Lands and Forestry

**DESCRIPTION**

*Parishes – Langtree, Naradhun; County – Nicholson*  
*Land District – Hillston; LGA – Carrathool*

Road Closed: Lot 1 DP 1236723

File No: 17/08028

**SCHEDULE**

On closing, the land within Lot 1 DP 1236723 remains vested in the State of New South Wales as Crown land.

[n2018-112]

---

**NOTIFICATION OF CLOSING OF A ROAD**

In pursuance of the provisions of the *Roads Act 1993*, the road hereunder described is closed and the lands comprised therein cease to be public road and the rights of passage and access that previously existed in relation to the road is extinguished. Upon closing, title to the land, comprising the former public road, vests in the body specified in the Schedule hereunder.

The Hon Paul Toole, MP  
Minister for Lands and Forestry

**DESCRIPTION**

*Parish – Indi; County – Selwyn*

*Land District – Tumbarumba; LGA – Snowy Valleys*

Road Closed: Lot 1 DP 1219802

File No: 16/00235

**SCHEDULE**

On closing, the land within Lot 1 DP 1219802 remains vested in the State of New South Wales as Crown land.

[n2018-113]

---

**NOTIFICATION OF CLOSING OF A ROAD**

In pursuance of the provisions of the *Roads Act 1993*, the road hereunder described is closed and the lands comprised therein cease to be public road and the rights of passage and access that previously existed in relation to the road is extinguished. Upon closing, title to the land, comprising the former public road, vests in the body specified in the Schedule hereunder.

The Hon Paul Toole, MP  
Minister for Lands and Forestry

**DESCRIPTION**

*Parish – Mount Mitchell; County – Gough*

*Land District – Glen Innes; LGA – Glen Innes Severn*

Road Closed: Lot 3 DP 1217201

File No: 15/05399

**SCHEDULE**

On closing, the land within Lot 3 DP 1217201 remains vested in the State of New South Wales as Crown land.

[n2018-114]

---

**NOTIFICATION OF CLOSING OF A ROAD**

In pursuance of the provisions of the *Roads Act 1993*, the road hereunder described is closed and the lands comprised therein cease to be public road and the rights of passage and access that previously existed in relation to the road is extinguished. Upon closing, title to the land, comprising the former public road, vests in the body specified in the Schedule hereunder.

The Hon Paul Toole, MP  
Minister for Lands and Forestry

**DESCRIPTION**

*Parish – Jasper; County – Rous*

*Land District – Lismore; LGA – Byron*

Road Closed: Lot 1 DP 1213182

File No: 13/12120

### SCHEDULE

On closing, the land within Lot 1 DP 1213182 remains vested in the State of New South Wales as Crown land.

[n2018-115]

---

### NOTIFICATION OF CLOSING OF A ROAD

In pursuance of the provisions of the *Roads Act 1993*, the road hereunder described is closed and the lands comprised therein cease to be public road and the rights of passage and access that previously existed in relation to the road is extinguished. Upon closing, title to the land, comprising the former public road, vests in the body specified in the Schedule hereunder.

The Hon Paul Toole, MP  
Minister for Lands and Forestry

### DESCRIPTION

*Parishes – Moorwatha, Bungowannah; County – Hume*  
*Land District – Albury; LGA – Greater Hume*

Road Closed: Lots 4-6 DP 1228512

File No: 14/01770

### SCHEDULE

On closing, the land within Lots 5-6 DP 1228512 remains vested in the State of New South Wales as Crown land.

On closing, the land within Lot 4 DP 1228512 becomes vested in the State of New South Wales as Crown land.

[n2018-116]

---

### NOTIFICATION OF CLOSING OF A ROAD

In pursuance of the provisions of the *Roads Act 1993*, the road hereunder described is closed and the lands comprised therein cease to be public road and the rights of passage and access that previously existed in relation to the road is extinguished. Upon closing, title to the land, comprising the former public road, vests in the body specified in the Schedule hereunder.

The Hon Paul Toole, MP  
Minister for Lands and Forestry

### DESCRIPTION

*Parish – Moombooldool; County – Cooper*  
*Land District – Narrandera; LGA – Narrandera*

Road Closed: Lot 1 DP 1238092

File No: 17/10100 RS

### SCHEDULE

On closing, the land within Lot 1 DP 1238092 remains vested in the State of New South Wales as Crown land.

[n2018-117]

---

### NOTIFICATION OF CLOSING OF A ROAD

In pursuance of the provisions of the *Roads Act 1993*, the road hereunder described is closed and the lands comprised therein cease to be public road and the rights of passage and access that previously existed in relation to the road is extinguished. Upon closing, title to the land, comprising the former public road, vests in the body specified in the Schedule hereunder.

The Hon Paul Toole, MP  
Minister for Lands and Forestry

### DESCRIPTION

*Parish – Coonabarabran; County – Gowen*  
*Land District – Coonabarabran; LGA – Warrumbungle*

Road Closed: Lots 1-3 DP 1217746

File No: 11/05858

**SCHEDULE**

On closing, the land within Lots 1-3 DP 1217746 remains vested in the State of New South Wales as Crown land.

[n2018-118]

---

**NOTIFICATION OF CLOSING OF A ROAD**

In pursuance of the provisions of the *Roads Act 1993*, the road hereunder described is closed and the lands comprised therein cease to be public road and the rights of passage and access that previously existed in relation to the road is extinguished. Upon closing, title to the land, comprising the former public road, vests in the body specified in the Schedule hereunder.

The Hon Paul Toole, MP  
Minister for Lands and Forestry

**DESCRIPTION**

*Parish – Lake; County – Wallace*  
*Land District – Cooma; LGA – Snowy Monaro Regional*

Road Closed: Lot 1 DP 1236470

File No: 17/00683

**SCHEDULE**

On closing, the land within Lot 1 DP 1236470 remains vested in the State of New South Wales as Crown land.

[n2018-119]

---

**NOTIFICATION OF CLOSING OF A ROAD**

In pursuance of the provisions of the *Roads Act 1993*, the road hereunder described is closed and the lands comprised therein cease to be public road and the rights of passage and access that previously existed in relation to the road is extinguished. Upon closing, title to the land, comprising the former public road, vests in the body specified in the Schedule hereunder.

The Hon Paul Toole, MP  
Minister for Lands and Forestry

**DESCRIPTION**

*Parish – Campbell; County – Leichhardt*  
*Land District – Coonamble; LGA – Coonamble*

Road Closed: Lot 4 DP 1234578

File No: 17/06319

**SCHEDULE**

On closing, the land within Lot 4 DP 1234578 remains vested in the State of New South Wales as Crown land.

[n2018-120]

---

**NOTIFICATION OF CLOSING OF A ROAD**

In pursuance of the provisions of the *Roads Act 1993*, the road hereunder described is closed and the lands comprised therein cease to be public road and the rights of passage and access that previously existed in relation to the road is extinguished. Upon closing, title to the land, comprising the former public road, vests in the body specified in the Schedule hereunder.

The Hon Paul Toole, MP  
Minister for Lands and Forestry

**DESCRIPTION**

*Parishes – Gelambula, Campbell; County – Leichhardt*  
*Land District – Coonamble; LGA – Coonamble*

Road Closed: Lot 1 DP 1234579

File No: 17/06320

**SCHEDULE**

On closing, the land within Lot 1 DP 1234579 remains vested in the State of New South Wales as Crown land.

[n2018-121]

---

**NOTIFICATION OF CLOSING OF A ROAD**

In pursuance of the provisions of the *Roads Act 1993*, the road hereunder described is closed and the lands comprised therein cease to be public road and the rights of passage and access that previously existed in relation to the road is extinguished. Upon closing, title to the land, comprising the former public road, vests in the body specified in the Schedule hereunder.

The Hon Paul Toole, MP  
Minister for Lands and Forestry

**DESCRIPTION**

*Parish – Lake; County – Wallace*  
*Land District – Cooma; LGA – Snowy Monaro Regional*

Road Closed: Lot 2 DP 1236855

File No: 17/00587

**SCHEDULE**

On closing, the land within Lot 2 DP 1236855 remains vested in the State of New South Wales as Crown land.

[n2018-122]

---

**NOTIFICATION OF CLOSING OF A ROAD**

In pursuance of the provisions of the *Roads Act 1993*, the road hereunder described is closed and the lands comprised therein cease to be public road and the rights of passage and access that previously existed in relation to the road is extinguished. Upon closing, title to the land, comprising the former public road, vests in the body specified in the Schedule hereunder.

The Hon Paul Toole, MP  
Minister for Lands and Forestry

**DESCRIPTION**

*Parish – Bardool; County – Fitzroy*  
*Land District – Grafton; LGA – Clarence Valley*

Road Closed: Lot 2 DP 1236910

File No: 17/06547

**SCHEDULE**

On closing, the land within Lot 2 DP 1236910 remains vested in the State of New South Wales as Crown land.

[n2018-123]

---

**NOTIFICATION OF CLOSING OF A ROAD**

In pursuance of the provisions of the *Roads Act 1993*, the road hereunder described is closed and the lands comprised therein cease to be public road and the rights of passage and access that previously existed in relation to the road is extinguished. Upon closing, title to the land, comprising the former public road, vests in the body specified in the Schedule hereunder.

The Hon Paul Toole, MP  
Minister for Lands and Forestry

**DESCRIPTION**

*Parish – Bolaira; County – Wallace*  
*Land District – Cooma; LGA – Snowy Monaro Regional*

Road Closed: Lot 6 DP 1236409

File No: 17/02947

**SCHEDULE**

On closing, the land within Lot 6 DP 1236409 remains vested in the State of New South Wales as Crown land.

[n2018-124]

---

**NOTIFICATION OF CLOSING OF A ROAD**

In pursuance of the provisions of the *Roads Act 1993*, the road hereunder described is closed and the lands comprised therein cease to be public road and the rights of passage and access that previously existed in relation to the road is extinguished. Upon closing, title to the land, comprising the former public road, vests in the body specified in the Schedule hereunder.

The Hon Paul Toole, MP  
Minister for Lands and Forestry

**DESCRIPTION**

*Parish – Holland; County – Beresford*  
*Land District – Cooma; LGA – Snowy Monaro Regional*

Road Closed: Lots 1-6 DP 1236951

File No: GB07H266:JT

**SCHEDULE**

On closing, the land within Lots 1-6 DP 1236951 remains vested in the State of New South Wales as Crown land.

[n2018-125]

---

**NOTIFICATION OF CLOSING OF A ROAD**

In pursuance of the provisions of the *Roads Act 1993*, the road hereunder described is closed and the lands comprised therein cease to be public road and the rights of passage and access that previously existed in relation to the road is extinguished. Upon closing, title to the land, comprising the former public road, vests in the body specified in the Schedule hereunder.

The Hon Paul Toole, MP  
Minister for Lands and Forestry

**DESCRIPTION**

*Parish – Quanda Quanda; County – Leichhardt*  
*Land District – Coonamble; LGA – Coonamble*

Road Closed: Lot 1 DP 1236960 & Lot 1 DP 1236922

File No: 16/00924:JT

**SCHEDULE**

On closing, the land within Lot 1 DP 1236960 & Lot 1 DP 1236922 remains vested in the State of New South Wales as Crown land.

[n2018-126]

---

**NOTIFICATION OF CLOSING OF A ROAD**

In pursuance of the provisions of the *Roads Act 1993*, the road hereunder described is closed and the lands comprised therein cease to be public road and the rights of passage and access that previously existed in relation to the road is extinguished. Upon closing, title to the land, comprising the former public road, vests in the body specified in the Schedule hereunder.

The Hon Paul Toole, MP  
Minister for Lands and Forestry

**DESCRIPTION**

*Parish – Lindsay; County – Bathurst*  
*Land District – Blayney; LGA – Blayney*

Road Closed: Lot 1 DP 1225194

File No: CL/00205

**SCHEDULE**

On closing, the land within Lot 1 DP 1225194 remains vested in the State of New South Wales as Crown land.

[n2018-127]

---

**NOTIFICATION OF CLOSING OF A ROAD**

In pursuance of the provisions of the *Roads Act 1993*, the road hereunder described is closed and the lands comprised therein cease to be public road and the rights of passage and access that previously existed in relation to the road is extinguished. Upon closing, title to the land, comprising the former public road, vests in the body specified in the Schedule hereunder.

The Hon Paul Toole, MP  
Minister for Lands and Forestry

**DESCRIPTION**

*Parish – Enmore; County – Sandon*  
*Land District – Armidale; LGA – Armidale Regional*

Road Closed: Lot 1 DP 1233915

File No: 17/00679

**SCHEDULE**

On closing, the land within Lot 1 DP 1233915 remains vested in the State of New South Wales as Crown land.

[n2018-128]

---

**NOTIFICATION OF CLOSING OF A ROAD**

In pursuance of the provisions of the *Roads Act 1993*, the road hereunder described is closed and the lands comprised therein cease to be public road and the rights of passage and access that previously existed in relation to the road is extinguished. Upon closing, title to the land, comprising the former public road, vests in the body specified in the Schedule hereunder.

The Hon Paul Toole, MP  
Minister for Lands and Forestry

**DESCRIPTION**

*Parish – Young; County – Benarba*  
*Land District – Young; LGA – Hilltops*

Road Closed: Lot 2 DP 1234865

File No: 17/05682

**SCHEDULE**

On closing, the land within Lot 2 DP 1234865 remains vested in the State of New South Wales as Crown land.

[n2018-129]

---

**NOTIFICATION OF CLOSING OF A ROAD**

In pursuance of the provisions of the *Roads Act 1993*, the road hereunder described is closed and the lands comprised therein cease to be public road and the rights of passage and access that previously existed in relation to the road is extinguished. Upon closing, title to the land, comprising the former public road, vests in the body specified in the Schedule hereunder.

The Hon Paul Toole, MP  
Minister for Lands and Forestry

**DESCRIPTION**

*Parish – Peacumboul; County – Courallie*  
*Land District – Moree; LGA – Moree Plains*

Road Closed: Lot 3 DP 1235714

File No: 17/06488

**SCHEDULE**

On closing, the land within Lot 3 DP 1235714 remains vested in the State of New South Wales as Crown land.

[n2018-130]

---

**NOTIFICATION OF CLOSING OF A ROAD**

In pursuance of the provisions of the *Roads Act 1993*, the road hereunder described is closed and the lands comprised therein cease to be public road and the rights of passage and access that previously existed in relation to the road is extinguished. Upon closing, title to the land, comprising the former public road, vests in the body specified in the Schedule hereunder.

The Hon Paul Toole, MP  
Minister for Lands and Forestry

**DESCRIPTION**

*Parish – Bala; County – King  
Land District – Boorowa; LGA – Hilltops*

Road Closed: Lot 3 DP 1237024

File No: 17/08627

**SCHEDULE**

On closing, the land within Lot 3 DP 1237024 remains vested in the State of New South Wales as Crown land.

[n2018-131]

---

**NOTIFICATION OF CLOSING OF A ROAD**

In pursuance of the provisions of the *Roads Act 1993*, the road hereunder described is closed and the lands comprised therein cease to be public road and the rights of passage and access that previously existed in relation to the road is extinguished. Upon closing, title to the land, comprising the former public road, vests in the body specified in the Schedule hereunder.

The Hon Paul Toole, MP  
Minister for Lands and Forestry

**DESCRIPTION**

*Parish – Harnham; County – Sandon  
Land District – Armidale; LGA – Uralla*

Road Closed: Lot 9 DP 1237026

File No: 17/08156

**SCHEDULE**

On closing, the land within Lot 9 DP 1237026 remains vested in the State of New South Wales as Crown land.

[n2018-132]

---

**NOTIFICATION OF CLOSING OF A ROAD**

In pursuance of the provisions of the *Roads Act 1993*, the road hereunder described is closed and the lands comprised therein cease to be public road and the rights of passage and access that previously existed in relation to the road is extinguished. Upon closing, title to the land, comprising the former public road, vests in the body specified in the Schedule hereunder.

The Hon Paul Toole, MP  
Minister for Lands and Forestry

**DESCRIPTION**

*Parish – Murrumboola; County – Harden  
Land District – Young; LGA – Hilltops*



Road Closed: Lot 2 DP 1236411

File No: 17/04690

**SCHEDULE**

On closing, the land within Lot 2 DP 1236411 remains vested in the State of New South Wales as Crown land.

[n2018-133]

---

**NOTIFICATION OF CLOSING OF A ROAD**

In pursuance of the provisions of the *Roads Act 1993*, the road hereunder described is closed and the lands comprised therein cease to be public road and the rights of passage and access that previously existed in relation to the road is extinguished. Upon closing, title to the land, comprising the former public road, vests in the body specified in the Schedule hereunder.

The Hon Paul Toole, MP  
Minister for Lands and Forestry

**DESCRIPTION**

*Parish – Galong; County – Harden*  
*Land District – Boorowa; LGA – Hilltops*

Road Closed: Lot 1 DP 1236410

File No: 17/04443

**SCHEDULE**

On closing, the land within Lot 1 DP 1236410 remains vested in the State of New South Wales as Crown land.

[n2018-134]

---

**NOTIFICATION OF CLOSING OF A ROAD**

In pursuance of the provisions of the *Roads Act 1993*, the road hereunder described is closed and the lands comprised therein cease to be public road and the rights of passage and access that previously existed in relation to the road is extinguished. Upon closing, title to the land, comprising the former public road, vests in the body specified in the Schedule hereunder.

The Hon Paul Toole, MP  
Minister for Lands and Forestry

**DESCRIPTION**

*Parish – Mundoonen; County – King*  
*Land District – Gunning; LGA – Upper Lachlan*

Road Closed: Lot 1 DP 1234435

File No: 17/02892

**SCHEDULE**

On closing, the land within Lot 1 DP 1234435 remains vested in the State of New South Wales as Crown land.

[n2018-135]

---

**NOTIFICATION OF CLOSING OF A ROAD**

In pursuance of the provisions of the *Roads Act 1993*, the road hereunder described is closed and the lands comprised therein cease to be public road and the rights of passage and access that previously existed in relation to the road is extinguished. Upon closing, title to the land, comprising the former public road, vests in the body specified in the Schedule hereunder.

The Hon Paul Toole, MP  
Minister for Lands and Forestry

**DESCRIPTION**

*Parish – Nullica; County – Auckland*  
*Land District – Bega; LGA – Bega Valley*

Road Closed: Lot 1 DP 1234916

File No: 15/08546

**SCHEDULE**

On closing, the land within Lot 1 DP1234916 becomes vested in the State of New South Wales as Crown Land.

Council's reference: Lay

[n2018-136]

---

**NOTIFICATION OF CLOSING OF A ROAD**

In pursuance of the provisions of the *Roads Act 1993*, the road hereunder described is closed and the lands comprised therein cease to be public road and the rights of passage and access that previously existed in relation to the road is extinguished. Upon closing, title to the land, comprising the former public road, vests in the body specified in the Schedule hereunder.

The Hon Paul Toole, MP  
Minister for Lands and Forestry

**DESCRIPTION**

*Parish – Nanima; County – Murray  
Land District – Yass; LGA – Yass Valley*

Road Closed: Lot 2 DP 1236416

File No: 17/04769

**SCHEDULE**

On closing, the land within Lot 2 DP 1236416 remains vested in the State of New South Wales as Crown land.

[n2018-137]

---

**NOTIFICATION OF CLOSING OF A ROAD**

In pursuance of the provisions of the *Roads Act 1993*, the road hereunder described is closed and the lands comprised therein cease to be public road and the rights of passage and access that previously existed in relation to the road is extinguished. Upon closing, title to the land, comprising the former public road, vests in the body specified in the Schedule hereunder.

The Hon Paul Toole, MP  
Minister for Lands and Forestry

**DESCRIPTION**

*Parish – Galong; County – Harden  
Land District – Boorowa; LGA – Hilltops*

Road Closed: Lots 1-4 DP 1236415

File No: 17/04441

**SCHEDULE**

On closing, the land within Lots 1-4 DP 1236415 remains vested in the State of New South Wales as Crown land.

[n2018-138]

---

**NOTIFICATION OF CLOSING OF A ROAD**

In pursuance of the provisions of the *Roads Act 1993*, the road hereunder described is closed and the lands comprised therein cease to be public road and the rights of passage and access that previously existed in relation to the road is extinguished. Upon closing, title to the land, comprising the former public road, vests in the body specified in the Schedule hereunder.

The Hon Paul Toole, MP  
Minister for Lands and Forestry

**DESCRIPTION**

*Parish – Nandabah; County – Richmond*  
*Land District – Casino; LGA – Richmond Valley*

Road Closed: Lot 1 DP 1238278

File No: 16/10118

**SCHEDULE**

On closing, the land within Lot 1 DP1238278 which was formerly Council road becomes vested in the State of New South Wales as Crown Land.

Council's reference: Ivy Street

[n2018-139]

---

**NOTIFICATION OF CLOSING OF A ROAD**

In pursuance of the provisions of the *Roads Act 1993*, the road hereunder described is closed and the lands comprised therein cease to be public road and the rights of passage and access that previously existed in relation to the road is extinguished. Upon closing, title to the land, comprising the former public road, vests in the body specified in the Schedule hereunder.

The Hon Paul Toole, MP  
Minister for Lands and Forestry

**DESCRIPTION**

*Parish – Findon; County – Rous*  
*Land District – Casino; LGA – Kyogle*

Road Closed: Lot 3 DP 1236466

File No: 12/01568

**SCHEDULE**

On closing, the land within Lot 3 DP 1236466 remains vested in the State of New South Wales as Crown land.

[n2018-140]

---

**NOTIFICATION OF CLOSING OF A ROAD**

In pursuance of the provisions of the *Roads Act 1993*, the road hereunder described is closed and the lands comprised therein cease to be public road and the rights of passage and access that previously existed in relation to the road is extinguished. Upon closing, title to the land, comprising the former public road, vests in the body specified in the Schedule hereunder.

The Hon Paul Toole, MP  
Minister for Lands and Forestry

**DESCRIPTION**

*Parish – Blakefield; County – Wallace*  
*Land District – Cooma; LGA – Snowy Monaro Regional*

Road Closed: Lot 1 DP 1236906

File No: 17/05274

**SCHEDULE**

On closing, the land within Lot 1 DP 1236906 remains vested in the State of New South Wales as Crown land.

[n2018-141]

---

### NOTIFICATION OF CLOSING OF A ROAD

In pursuance of the provisions of the *Roads Act 1993*, the road hereunder described is closed and the lands comprised therein cease to be public road and the rights of passage and access that previously existed in relation to the road is extinguished. Upon closing, title to the land, comprising the former public road, vests in the body specified in the Schedule hereunder.

The Hon Paul Toole, MP  
Minister for Lands and Forestry

#### DESCRIPTION

*Parish – Fladbury; County – Gough*  
*Land District – Glen Innes; LGA – Glen Innes Severn*

Road Closed: Lot 3 DP 1236900

File No: 17/06273

#### SCHEDULE

On closing, the land within Lot 3 DP 1236900 remains vested in the State of New South Wales as Crown land.

[n2018-142]

---

### NOTIFICATION OF CLOSING OF A ROAD

In pursuance of the provisions of the *Roads Act 1993*, the road hereunder described is closed and the lands comprised therein cease to be public road and the rights of passage and access that previously existed in relation to the road is extinguished. Upon closing, title to the land, comprising the former public road, vests in the body specified in the Schedule hereunder.

The Hon Paul Toole, MP  
Minister for Lands and Forestry

#### DESCRIPTION

*Parish – Enmore; County – Sandon*  
*Land District – Armidale; LGA – Armidale Regional*

Road Closed: Lot 1 DP 1235046

File No: 17/00674

#### SCHEDULE

On closing, the land within Lot 1 DP 1235046 remains vested in the State of New South Wales as Crown land.

[n2018-143]

---

### NOTIFICATION OF CLOSING OF A ROAD

In pursuance of the provisions of the *Roads Act 1993*, the road hereunder described is closed and the lands comprised therein cease to be public road and the rights of passage and access that previously existed in relation to the road is extinguished. Upon closing, title to the land, comprising the former public road, vests in the body specified in the Schedule hereunder.

The Hon Paul Toole, MP  
Minister for Lands and Forestry

#### DESCRIPTION

*Parish – Yarranbella; County – Raleigh*  
*Land District – Bellingen; LGA – Nambucca*

Road Closed: Lot 1 DP 1237653

File No: 17/08975

#### SCHEDULE

On closing, the land within Lot 1 DP 1237653 remains vested in the State of New South Wales as Crown land.

[n2018-144]

---

### ERRATUM

IN the Government Gazette of 20 October 2017, folio 6482 under the heading "Withdrawal of lands from Western Lands Leases", the area of lease in Column 5 for folio ID 2156/764081 should read 3925.

File Reference: 14/00059

[n2018-145]

---

### NOTIFICATION OF CLOSING OF A ROAD

In pursuance of the provisions of the *Roads Act 1993*, the road hereunder described is closed and the lands comprised therein cease to be public road and the rights of passage and access that previously existed in relation to the road is extinguished. Upon closing, title to the land, comprising the former public road, vests in the body specified in the Schedule hereunder.

The Hon Paul Toole, MP  
Minister for Lands and Forestry

#### DESCRIPTION

*Parish – Willydah; County – Narromine  
Land District – Dubbo; LGA – Narromine*

Road Closed: Lot 1 DP 1234355

File No: 17/01790

#### SCHEDULE

On closing, the land within Lot 1 DP 1234355 remains vested in the State of New South Wales as Crown land.

[n2018-146]

---

### NOTIFICATION OF CLOSING OF A ROAD

In pursuance of the provisions of the *Roads Act 1993*, the road hereunder described is closed and the lands comprised therein cease to be public road and the rights of passage and access that previously existed in relation to the road is extinguished. Upon closing, title to the land, comprising the former public road, vests in the body specified in the Schedule hereunder.

The Hon Paul Toole, MP  
Minister for Lands and Forestry

#### DESCRIPTION

*Parish – Clifden; County – Clarence  
Land District – Grafton; LGA – Clarence Valley*

Road Closed: Lot 4 DP 1237727

File No: 16/01123

#### SCHEDULE

On closing, the land within Lot 4 DP 1237727 remains vested in the State of New South Wales as Crown land.

[n2018-147]

---

### NOTIFICATION OF CLOSING OF A ROAD

In pursuance of the provisions of the *Roads Act 1993*, the road hereunder described is closed and the lands comprised therein cease to be public road and the rights of passage and access that previously existed in relation to the road is extinguished. Upon closing, title to the land, comprising the former public road, vests in the body specified in the Schedule hereunder.

The Hon Paul Toole, MP  
Minister for Lands and Forestry

#### DESCRIPTION

*Parish – Dunoon; County – Rous  
Land District – Lismore; LGA – Lismore*

Road Closed: Lot 1 DP 1237730

File No: 09/19184

**SCHEDULE**

On closing, the land within Lot 1 DP 1237730 remains vested in the State of New South Wales as Crown land.

[n2018-148]

---

**NOTIFICATION OF CLOSING OF A ROAD**

In pursuance of the provisions of the *Roads Act 1993*, the road hereunder described is closed and the lands comprised therein cease to be public road and the rights of passage and access that previously existed in relation to the road is extinguished. Upon closing, title to the land, comprising the former public road, vests in the body specified in the Schedule hereunder.

The Hon Paul Toole, MP  
Minister for Lands and Forestry

**DESCRIPTION**

*Parish – Meerschaum; County – Rous  
Land District – Lismore; LGA – Lismore*

Road Closed: Lot 10 DP 1238535

File No: 16/04590

**SCHEDULE**

On closing, the land within Lot 10 DP 1238535 remains vested in Lismore City Council as operational land for the purposes of the *Local Government Act 1993*.

Council Reference: OM: CO16/3806

[n2018-149]

---

**NOTIFICATION OF CLOSING OF A ROAD**

In pursuance of the provisions of the *Roads Act 1993*, the road hereunder described is closed and the lands comprised therein cease to be public road and the rights of passage and access that previously existed in relation to the road is extinguished. Upon closing, title to the land, comprising the former public road, vests in the body specified in the Schedule hereunder.

The Hon Paul Toole, MP  
Minister for Lands and Forestry

**DESCRIPTION**

*Parish – Avenal; County – Durham  
Land District – Dungog; LGA – Dungog*

Road Closed: Lot 2 DP 1238314

File No: 17/09835

**SCHEDULE**

On closing, the land within Lot 2 DP 1238314 remains vested in the State of New South Wales as Crown land.

[n2018-150]

---

**NOTIFICATION OF CLOSING OF A ROAD**

In pursuance of the provisions of the *Roads Act 1993*, the road hereunder described is closed and the lands comprised therein cease to be public road and the rights of passage and access that previously existed in relation to the road is extinguished. Upon closing, title to the land, comprising the former public road, vests in the body specified in the Schedule hereunder.

The Hon Paul Toole, MP  
Minister for Lands and Forestry

**DESCRIPTION**

*Parish – Monkellan; County – Murray*  
*Land District – Queanbeyan; LGA – Snowy Monaro Regional*

Road Closed: Lot 1 DP 1237383

File No: 17/01798

**SCHEDULE**

On closing, the land within Lot 1 DP 1237383 remains vested in the State of New South Wales as Crown land.

[n2018-151]

---

**NOTIFICATION OF CLOSING OF A ROAD**

In pursuance of the provisions of the *Roads Act 1993*, the road hereunder described is closed and the lands comprised therein cease to be public road and the rights of passage and access that previously existed in relation to the road is extinguished. Upon closing, title to the land, comprising the former public road, vests in the body specified in the Schedule hereunder.

The Hon Paul Toole, MP  
Minister for Lands and Forestry

**DESCRIPTION**

*Parishes – Dahwilly, Woonox; County – Townsend*  
*Land District – Deniliquin; LGA – Edward River*

Road Closed: Lot 2 DP 1235188

File No: HY99H7

**SCHEDULE**

On closing, the land within Lot 2 DP 1235188 remains vested in the State of New South Wales as Crown land.

[n2018-152]

---

**NOTIFICATION OF CLOSING OF A ROAD**

In pursuance of the provisions of the *Roads Act 1993*, the road hereunder described is closed and the lands comprised therein cease to be public road and the rights of passage and access that previously existed in relation to the road is extinguished. Upon closing, title to the land, comprising the former public road, vests in the body specified in the Schedule hereunder.

The Hon Paul Toole, MP  
Minister for Lands and Forestry

**DESCRIPTION**

*Parishes – Clinton, Worcester; County – Bathurst*  
*Land District – Orange; LGA – Cabonne*

Road Closed: Lots 1-2 DP 1229509

File No: 15/08146

**SCHEDULE**

On closing, the land within Lots 1-2 DP 1229509 remains vested in the State of New South Wales as Crown land.

[n2018-153]

---

**NOTIFICATION OF CLOSING OF A ROAD**

In pursuance of the provisions of the *Roads Act 1993*, the road hereunder described is closed and the lands comprised therein cease to be public road and the rights of passage and access that previously existed in relation to the road is extinguished. Upon closing, title to the land, comprising the former public road, vests in the body specified in the Schedule hereunder.

The Hon Paul Toole, MP  
Minister for Lands and Forestry

**DESCRIPTION**

*Parish – Errol; County – Bathurst*  
*Land District – Blayney; LGA – Blayney*

Road Closed: Lot 4 DP 1224792

File No: CL/00574

**SCHEDULE**

On closing, the land within Lot 4 DP 1224792 remains vested in the State of New South Wales as Crown land.

[n2018-154]

---

**NOTIFICATION OF CLOSING OF A ROAD**

In pursuance of the provisions of the *Roads Act 1993*, the road hereunder described is closed and the lands comprised therein cease to be public road and the rights of passage and access that previously existed in relation to the road is extinguished. Upon closing, title to the land, comprising the former public road, vests in the body specified in the Schedule hereunder.

The Hon Paul Toole, MP  
Minister for Lands and Forestry

**DESCRIPTION**

*Parishes – Louis, Severn; County – Gough*  
*Land District – Glen Innes; LGA – Glen Innes Severn*

Road Closed: Lots 2-3 DP 1235054

File No: 17/06589

**SCHEDULE**

On closing, the land within Lots 2-3 DP 1235054 remains vested in the State of New South Wales as Crown land.

[n2018-155]

---

**NOTIFICATION OF CLOSING OF A ROAD**

In pursuance of the provisions of the *Roads Act 1993*, the road hereunder described is closed and the lands comprised therein cease to be public road and the rights of passage and access that previously existed in relation to the road is extinguished. Upon closing, title to the land, comprising the former public road, vests in the body specified in the Schedule hereunder.

The Hon Paul Toole, MP  
Minister for Lands and Forestry

**DESCRIPTION**

*Parish – King; County – Selwyn*  
*Land District – Tumbarumba; LGA – Snowy Valleys*

Road Closed: Lot 2 DP 1237280

File No: 17/05257

**SCHEDULE**

On closing, the land within Lot 2 DP 1237280 remains vested in the State of New South Wales as Crown land.

[n2018-156]

---

**NOTIFICATION OF CLOSING OF A ROAD**

In pursuance of the provisions of the *Roads Act 1993*, the road hereunder described is closed and the lands comprised therein cease to be public road and the rights of passage and access that previously existed in relation to the road is extinguished. Upon closing, title to the land, comprising the former public road, vests in the body specified in the Schedule hereunder.

The Hon Paul Toole, MP  
Minister for Lands and Forestry



**DESCRIPTION**

*Parish – Bolton; County – Westmoreland*

*Land District – Bathurst; LGA – Oberon*

Road Closed: Lot 2 DP 1211500

File No: 14/07894

**SCHEDULE**

On closing, the land within Lot 2 DP 1211500 remains vested in the State of New South Wales as Crown land.

[n2018-157]

---

**NOTIFICATION OF CLOSING OF A ROAD**

In pursuance of the provisions of the *Roads Act 1993*, the road hereunder described is closed and the lands comprised therein cease to be public road and the rights of passage and access that previously existed in relation to the road is extinguished. Upon closing, title to the land, comprising the former public road, vests in the body specified in the Schedule hereunder.

The Hon Paul Toole, MP  
Minister for Lands and Forestry

**DESCRIPTION**

*Parishes – Gostwyck, Uralla; County – Sandon*

*Land District – Armidale; LGA – Uralla*

Road Closed: Lot 1 DP 1200819

File No: 14/02420

**SCHEDULE**

On closing, the land within Lot 1 DP 1200819 remains vested in the State of New South Wales as Crown land.

[n2018-158]

---

**ROADS ACT 1993**

**ORDER**

Transfer of a Crown Road to Council

In pursuance of the provisions of Section 151, *Roads Act 1993*, the Crown public road specified in Schedule 1 is transferred to the Roads Authority specified in Schedule 2, as from the date of publication of this notice and from that date the road specified in Schedule 1 ceases to be a Crown public road.

THE HON PAUL TOOLE, MP  
Minister for Lands and Forestry

**SCHEDULE 1**

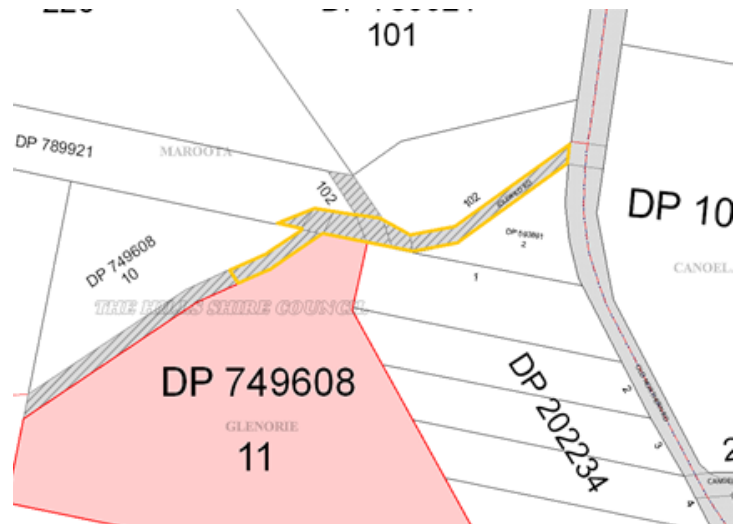
*Land District – Windsor;*

*Local Government Area – The Hills Shire;*

*Parish – Maroota;*

*County – Cumberland;*

That part of Crown public road known as Idlewild Road at Glenorie as shown by orange outline on the diagram hereunder.



**SCHEDULE 2**

Roads Authority: The Hills Shire Council

File No: 17/11738

[n2018-159]

**NOTIFICATION OF CLOSING OF A ROAD**

In pursuance of the provisions of the *Roads Act 1993*, the road hereunder described is closed and the lands comprised therein cease to be public road and the rights of passage and access that previously existed in relation to the road is extinguished. Upon closing, title to the land, comprising the former public road, vests in the body specified in the Schedule hereunder.

The Hon Paul Toole, MP  
Minister for Lands and Forestry

**DESCRIPTION**

*Parish – Doughboy; County – Clarke  
Land District – Armidale; LGA – Guyra*

Road Closed: Lots 1-2 DP 1212921

File No: 15/01194

**SCHEDULE**

On closing, the land within Lots 1-2 DP 1212921 remains vested in the State of New South Wales as Crown land.

[n2018-160]

**NOTIFICATION OF CLOSING OF A ROAD**

In pursuance of the provisions of the *Roads Act 1993*, the road hereunder described is closed and the lands comprised therein cease to be public road and the rights of passage and access that previously existed in relation to the road is extinguished. Upon closing, title to the land, comprising the former public road, vests in the body specified in the Schedule hereunder.

The Hon Paul Toole, MP  
Minister for Lands and Forestry

**DESCRIPTION**

*Parish – Cumbijowa; County – Forbes  
Land District – Forbes; LGA – Forbes*

Road Closed: Lot 1 DP 1236969

File No: 17/05804 RS

**SCHEDULE**

On closing, the land within Lot 1 DP1236969 becomes vested in the State of New South Wales as Crown Land.

Council's reference: 15/02973

[n2018-161]

---

**NOTIFICATION OF CLOSING OF A ROAD**

In pursuance of the provisions of the *Roads Act 1993*, the road hereunder described is closed and the lands comprised therein cease to be public road and the rights of passage and access that previously existed in relation to the road is extinguished. Upon closing, title to the land, comprising the former public road, vests in the body specified in the Schedule hereunder.

The Hon Paul Toole, MP  
Minister for Lands and Forestry

**DESCRIPTION**

*Parishes – Elong Elong, Bald Hill; County – Lincoln*

*Land District – Dubbo; LGA – Dubbo Regional*

Road Closed: Lots 1-2 DP 1230683

File No: 09/15462

**SCHEDULE**

On closing, the land within Lots 1 DP 1230683 remains vested in the State of New South Wales as Crown land.

On closing, the land within Lot 2 DP 1230683 becomes vested in the State of New South Wales as Crown Land.

Council's reference:09/15462

[n2018-162]

---

**NOTIFICATION OF CLOSING OF A ROAD**

In pursuance of the provisions of the *Roads Act 1993*, the road hereunder described is closed and the lands comprised therein cease to be public road and the rights of passage and access that previously existed in relation to the road is extinguished. Upon closing, title to the land, comprising the former public road, vests in the body specified in the Schedule hereunder.

The Hon Paul Toole, MP  
Minister for Lands and Forestry

**DESCRIPTION**

*Parishes – Bald Hill, Elong Elong; County – Lincoln*

*Land District – Dubbo; LGA – Dubbo Regional*

Road Closed: Lot 21 DP 1231504

File No: 09/15462

**SCHEDULE**

On closing, the land within Lot 21 DP 1231504 remains & becomes vested in the State of New South Wales as Crown land.

Council's reference: 09/15462

[n2018-163]

**NOTIFICATION OF CLOSING OF A ROAD**

In pursuance of the provisions of the *Roads Act 1993*, the road hereunder described is closed and the lands comprised therein cease to be public road and the rights of passage and access that previously existed in relation to the road is extinguished. Upon closing, title to the land, comprising the former public road, vests in the body specified in the Schedule hereunder.

The Hon Paul Toole, MP  
Minister for Lands and Forestry

**DESCRIPTION**

*Parish – Fladbury; County – Gough*  
*Land District – Glen Innes; LGA – Glen Innes Severn*

Road Closed: Lots 2, 4 DP 1236900

File No: 17/06269

**SCHEDULE**

On closing, the land within Lot 2 DP 1236900 remains vested in the State of New South Wales as Crown land.

On closing, the land within Lot 4 DP 1236900, which was formerly Council road becomes vested in the State of New South Wales as Crown Land.

[n2018-164]

**NOTIFICATION OF CLOSING OF A ROAD**

In pursuance of the provisions of the *Roads Act 1993*, the road hereunder described is closed and the lands comprised therein cease to be public road and the rights of passage and access that previously existed in relation to the road is extinguished. Upon closing, title to the land, comprising the former public road, vests in the body specified in the Schedule hereunder.

The Hon Paul Toole, MP  
Minister for Lands and Forestry

**DESCRIPTION**

*Parish – Coff; County – Fitzroy*  
*Land District – Bellingen; LGA – Coffs Harbour*

Road Closed: Lot 2 DP 1225193

File No: 16/05018

**SCHEDULE**

On closing, the land within Lot 2 DP 1225193 remains vested in the State of New South Wales as Crown land.

[n2018-165]

**NOTICE OF PURPOSE OTHER THAN THE DECLARED PURPOSE PURSUANT TO SECTION 34A(2)(b) OF THE CROWN LANDS ACT 1989**

Pursuant to section 34A(2)(b) of the *Crown Lands Act 1989*, the Crown reserve(s) specified in Column 2 of the Schedule is to be used or occupied under a relevant interest granted for the purpose(s) specified in Column 1 of the Schedule where such use or occupation is other than the declared purpose of the reserve

The Hon Paul Toole, MP  
Minister for Lands and Forestry

**Schedule**

<b>Column 1</b>	<b>Column 2</b>
grazing	Reserve No. 10394 Public Purpose: public buildings Notified: 30 November 1889 File Reference: 17/05382

## Schedule

Column 1	Column 2
causeway	Reserve No. 1011748 Public Purpose: access and public requirements, rural services, tourism purposes and environmental and heritage conservation Notified: 18 August 2006 File Reference: 07/5775

## Schedule

Column 1	Column 2
environmental rehabilitation	Reserve No. 751694 Public Purpose: future public requirements Notified: 29 June 2007 File Reference: 17/11572

## Schedule

Column 1	Column 2
causeway building	Reserve No. 56146 Public Purpose: generally Notified: 11 May 1923 File Reference: 07/5775 File Reference: 17/09144

## Schedule

Column 1	Column 2
Causeway building	Reserve No. 1011268 Public Purpose: future public requirements Notified: 3 February 2006 File Reference: 07/5775 File Reference: 17/09144

## Schedule

Column 1	Column 2
environmental protection	Reserve No. 1033748 Public Purpose: access, government purposes, public recreation, recreational fishing Notified: 18 November 2011 File Reference: 16/09612

## Schedule

Column 1	Column 2
environmental protection	Reserve No. 79310 Public Purpose: public recreation, resting place Notified: 1 February 1957 File Reference: 16/09612

## Schedule

Column 1	Column 2
environmental protection	Reserve No. 82654 Public Purpose: access, public recreation Notified: 1 July 1960 File Reference: 16/09612

**Schedule**

<b>Column 1</b>	<b>Column 2</b>
environmental protection	Reserve No. 82706 Public Purpose: public recreation, resting place Notified: 29 July 1960 File Reference: 16/09612

**Schedule**

<b>Column 1</b>	<b>Column 2</b>
environmental protection	Reserve No. 88871 Public Purpose: access, camping, public recreation Notified: 16 March 1973 File Reference: 16/09612

**Schedule**

<b>Column 1</b>	<b>Column 2</b>
environmental protection	Reserve No. 750227 Public Purpose: future public requirements Notified: 29 June 2007 File Reference: 16/09612

**Schedule**

<b>Column 1</b>	<b>Column 2</b>
environmental protection	Reserve No. 750239 Public Purpose: future public requirements Notified: 29 June 2007 File Reference: 16/09612

**Schedule**

<b>Column 1</b>	<b>Column 2</b>
environmental protection	Reserve No. 1012388 Public Purpose: regional requirements Notified: 15 September 2006 File Reference: 16/09612

**Schedule**

<b>Column 1</b>	<b>Column 2</b>
beautification	Reserve No. 68589 Public Purpose: public recreation Notified: 18 August 1939 File Reference: 17/06055

**Schedule**

<b>Column 1</b>	<b>Column 2</b>
grazing	Reserve No. 110026 Public Purpose: public recreation Notified: 25 August 1989 File Reference: 17/08311

## Schedule

Column 1	Column 2
grazing dam	Reserve No. 50415 Public Purpose: generally Notified: 16 December 1914 File Reference: 17/06423

## Schedule

Column 1	Column 2
access	Reserve No. 90663 Public Purpose: future public requirements Notified: 24 April 1975 File Reference: 17/08254

## Schedule

Column 1	Column 2
pontoon	Reserve No. 1012048 Public Purpose: access and public requirements, tourism purposes and environmental and heritage conservation Notified: 4 August 2006 File Reference: 17/06911

[n2018-166]

**ASSIGNMENT OF NAME TO RESERVE TRUST**

Pursuant to clause 4(3) of Schedule 8 of the *Crown Lands Act 1989* the name specified in Column 1 of the Schedule hereunder is assigned to the reserve trust constituted as trustee of the reserve specified opposite thereto in Column 2 of the Schedule.

The Hon Paul Toole, MP  
Minister for Lands and Forestry

## Schedule

Column 1	Column 2
Tamworth Public Recreation (R80112) Reserve Trust	Reserve No.: 80112 Public Purpose: Public Recreation Notified: 1 November 1957 File Reference: TH80R58

[n2018-167]

**ASSIGNMENT OF NAME TO RESERVE TRUST**

Pursuant to clause 4(3) of Schedule 8 of the *Crown Lands Act 1989* the name specified in Column 1 of the Schedule hereunder is assigned to the reserve trust constituted as trustee of the reserve specified opposite thereto in Column 2 of the Schedule.

The Hon Paul Toole, MP  
Minister for Lands and Forestry

## Schedule

Column 1	Column 2
East Lismore Public Park (D540069) Reserve Trust	Reserve No.: 540069 Public Purpose: Public Park Notified: 1 April 1977 File Reference: 17/10320

Liverpool Public Park (P1032408) Reserve Trust	Reserve No.: 1032408 Public Purpose: Public Park Reserved by the Liverpool Cemetery Act 1950 assented to 15 May 1950 File Reference: 17/10320
Brooms Head Sanitary Purposes (R70652) Reserve Trust	Reserve No.: 70652 Public Purpose: Sanitary Purposes Notified: 24 July 1942 File Reference: 17/10320
West Wiangaree Sanitary Purposes (R61927) Reserve Trust	Reserve No.: 61927 Public Purpose: Sanitary Purposes Notified: 27 June 1930 File Reference: 17/10320
Tabulam Sanitary Purposes (R60830) Reserve Trust	Reserve No.: 60830 Public Purpose: Sanitary Purposes Notified: 30 November 1928 File Reference: 17/10320
Brunswick Heads Sanitary Purposes (R73711) Reserve Trust	Reserve No.: 73711 Public Purpose: Sanitary Purposes Notified: 6 October 1950 File Reference: 17/10320
Wardell Night Soil Depot and Rubbish Depot (R74236) Reserve Trust	Reserve No.: 74236 Public Purpose: Night Soil and Rubbish Depot Notified: 1 June 1951 File Reference: 17/10320
Woolgoolga Night Soil Depot (R68342) Reserve Trust	Reserve No.: 68342 Public Purpose: Night Soil Depot Notified: 26 May 1939 File Reference: 17/10320
Ulmarra Night Soil Depot (R45185) Reserve Trust	Reserve No.: 45185 Public Purpose: Night Soil Depot Notified: 27 April 1910 File Reference: 17/10320
Red Rock Drainage (R85429) Reserve Trust	Reserve No.: 85429 Public Purpose: Drainage Notified: 27 August 1965 File Reference: 17/10320
Evans Head Drainage (R88310) Reserve Trust	Reserve No.: 88310 Public Purpose: Drainage Notified: 16 July 1971 File Reference: 17/10320
Brunswick Heads Sanitary Purposes (R73709) Reserve Trust	Reserve No.: 73709 Public Purpose: Sanitary Purposes Notified: 6 October 1950 File Reference: 17/10320
Liverpool Public Park (R700026) Reserve Trust	Reserve No.: 700026 Public Purpose: Public Park Reserved by the Old Liverpool Cemetery Act 1970 commenced 14 October 1970. File Reference: 17/10320
Balmain Public Recreation (R100083) Reserve Trust	Reserve No.: 100083 Public Purpose: Public Recreation Notified: 30 January 1987 File Reference: 17/10320



Menindee Public Recreation (R13528) Reserve Trust	Reserve No.: 13528 Public Purpose: Public Recreation Notified: 7 March 1891 File Reference: 17/10320
South Arm Public Recreation and Bush Fire Brigade Purposes (R140064) Reserve Trust	Reserve No.: 140064 Public Purpose: Public Recreation and Bush Fire Brigade Purposes Notified: 29 September 1989 File Reference: 17/10320
Emmaville Rubbish Depot and Sanitary Purposes (R96528) Reserve Trust	Reserve No.: 96528 Public Purpose: Rubbish Depot and Sanitary Purposes Notified: 24 December 1982 File Reference: 17/10320
Coolamon Public Recreation (R96541) Reserve Trust	Reserve No.: 96541 Public Purpose: Public Recreation Notified: 31 December 1982 File Reference: 17/10320
Wee Waa Drainage (R97246) Reserve Trust	Reserve No.: 97246 Public Purpose: Drainage Notified: 4 May 1984 File Reference: 17/10320
Young Drainage (R97309) Reserve Trust	Reserve No.: 97309 Public Purpose: Drainage Notified: 8 June 1984 File Reference: 17/10320
Vaucluse Cemetery Purposes (R97612) Reserve Trust	Reserve No.: 97612 Public Purpose: Cemetery Purposes Notified: 14 December 1984 File Reference: 17/10320
Dalgety Public Recreation (R97836) Reserve Trust	Reserve No.: 97836 Public Purpose: Public Recreation Notified: 5 July 1985 File Reference: 17/10320
Leonay Public Recreation (R98001) Reserve Trust	Reserve No.: 98001 Public Purpose: Public Recreation Notified: 22 November 1985 File Reference: 17/10320
Ellerslie Public Recreation (R98030) Reserve Trust	Reserve No.: 98030 Public Purpose: Public Recreation Notified: 20 December 1985 File Reference: 17/10320
Bingara Plantation (R98126) Reserve Trust	Reserve No.: 98126 Public Purpose: Plantation Notified: 4 April 1986 File Reference: 17/10320
Cronulla Public Recreation (R98173) Reserve Trust	Reserve No.: 98173 Public Purpose: Public Recreation Notified: 23 May 1986 File Reference: 17/10320
Bungendore Public Recreation (D1000193) Reserve Trust	Reserve No.: 1000193 Public Purpose: Public Recreation Notified: 3 October 1884 File Reference: 17/10320

Bookham Public Recreation (Addition) (D1000211) Reserve Trust	Reserve No.: 1000211 Public Purpose: Public Recreation Notified: 20 November 1897 File Reference: 17/10320
Bookham Public Recreation (D1000212) Reserve Trust	Reserve No.: 1000212 Public Purpose: Public Recreation Notified: 23 April 1895 File Reference: 17/10320
Jamberoo Public Recreation (D1000307) Reserve Trust	Reserve No.: 1000307 Public Purpose: Public Recreation Notified: 8 September 1933 File Reference: 17/10320

[n2018-168]

### ASSIGNMENT OF NAME TO RESERVE TRUST

Pursuant to clause 4(3) of Schedule 8 of the *Crown Lands Act 1989* the name specified in Column 1 of the Schedule hereunder is assigned to the reserve trust constituted as trustee of the reserve specified opposite thereto in Column 2 of the Schedule.

The Hon Paul Toole, MP  
Minister for Lands and Forestry

#### Schedule

Column 1	Column 2
Watsons Bay Public Recreation (P500091) Reserve Trust	Reserve No.: 500091 Public Purpose: Public Recreation Notified: 29 March 1887 File Reference: 17/10320
Mulgoa Public Recreation (D500123) Reserve Trust	Reserve No.: 500123 Public Purpose: Public Recreation Notified: 20 November 1925 File Reference: 17/10320
Bondi Public Recreation (D500152) Reserve Trust	Reserve No.: 500152 Public Purpose: Public Recreation Notified: 13 May 1887 File Reference: 17/10320
Bronte Public Recreation (D500153) Reserve Trust	Reserve No.: 500153 Public Purpose: Public Recreation Notified: 13 May 1887 File Reference: 17/10320
Bingara Rubbish Depot (R67908) Reserve Trust	Reserve No.: 67908 Public Purpose: Rubbish Depot Notified: 30 September 1938 File Reference: 17/10320
Spring Ridge Rubbish Depot (R68579) Reserve Trust	Reserve No.: 68579 Public Purpose: Rubbish Depot Notified: 18 August 1939 File Reference: 17/10320
Delungra Rubbish Depot and Sanitary Purposes (R69585) Reserve Trust	Reserve No.: 69585 Public Purpose: Rubbish Depot and Sanitary Purposes Notified: 11 October 1940 File Reference: 17/10320
Kootingal Rubbish Depot (R69729) Reserve Trust	Reserve No.: 69729 Public Purpose: Rubbish Depot Notified: 13 December 1940 File Reference: 17/10320

Pallamallawa Rubbish Depot (R69851) Reserve Trust	Reserve No.: 69851 Public Purpose: Rubbish Depot Notified: 14 February 1941 File Reference: 17/10320
Walcha Rubbish Depot (R70192) Reserve Trust	Reserve No.: 70192 Public Purpose: Rubbish Depot Notified: 1 August 1941 File Reference: 17/10320
Worrigeer Rubbish Depot (R70330) Reserve Trust	Reserve No.: 70330 Public Purpose: Rubbish Depot Notified: 10 October 1941 File Reference: 17/10320
Bendick Murrell Rubbish Depot (R70490) Reserve Trust	Reserve No.: 70490 Public Purpose: Sanitary Purposes Notified: 13 February 1942 File Reference: 17/10320
Cargo Rubbish Depot (R70751) Reserve Trust	Reserve No.: 70751 Public Purpose: Rubbish Depot Notified: 20 November 1942 File Reference: 17/10320
Blayney Sanitary Purposes (R70786) Reserve Trust	Reserve No.: 70786 Public Purpose: Sanitary Purposes Notified: 15 January 1943 File Reference: 17/10320
Gunningbland Rubbish Depot (R70887) Reserve Trust	Reserve No.: 70887 Public Purpose: Rubbish Depot Notified: 28 May 1943 File Reference: 17/10320
Hermidale Rubbish Depot (R71031) Reserve Trust	Reserve No.: 71031 Public Purpose: Rubbish Depot Notified: 5 November 1943 File Reference: 17/10320
Weemelah Rubbish Depot (R71626) Reserve Trust	Reserve No.: 71626 Public Purpose: Rubbish Depot Notified: 31 August 1945 File Reference: 17/10320
Tottenham Rubbish Depot (R72447) Reserve Trust	Reserve No.: 72447 Public Purpose: Rubbish Depot Notified: 3 October 1947 File Reference: 17/10320
Jennings Sanitary Purposes (R72784) Reserve Trust	Reserve No.: 72784 Public Purpose: Sanitary Purposes Notified: 16 July 1948 File Reference: 17/10320
New Lambton Public Recreation (R72941) Reserve Trust	Reserve No.: 72941 Public Purpose: Public Recreation Notified: 7 January 1949 File Reference: 17/10320
Macmasters Beach Public Recreation (R73131) Reserve Trust	Reserve No.: 73131 Public Purpose: Public Recreation Notified: 14 April 1949 File Reference: 17/10320

Gunning Rubbish Depot and Sanitary Purposes (R73482) Reserve Trust	Reserve No.: 73482 Public Purpose: Rubbish Depot and Sanitary Purposes Notified: 6 April 1950 File Reference: 17/10320
Pottsville Rubbish Depot and Sanitary Purposes (R74096) Reserve Trust	Reserve No.: 74096 Public Purpose: Rubbish Depot and Sanitary Purposes Notified: 16 March 1951 File Reference: 17/10320
Murrumburrah Rubbish Depot (R75700) Reserve Trust	Reserve No.: 75700 Public Purpose: Rubbish Depot Notified: 13 March 1953 File Reference: 17/10320
King Creek Rubbish Depot and Sanitary Purposes (R75727) Reserve Trust	Reserve No.: 75727 Public Purpose: Rubbish Depot and Sanitary Purposes Notified: 27 March 1951 File Reference: 17/10320
Wentworth Public Recreation (R76144) Reserve Trust	Reserve No.: 76144 Public Purpose: Public Recreation Notified: 7 August 1953 File Reference: 17/10320
Braidwood Rubbish Depot and Sanitary Purposes (R76152) Reserve Trust	Reserve No.: 76152 Public Purpose: Rubbish Depot and Sanitary Purposes Notified: 14 August 1953 File Reference: 17/10320
Gerringong Public Recreation (R76339) Reserve Trust	Reserve No.: 76339 Public Purpose: Public Recreation Notified: 30 October 1953 File Reference: 17/10320
Bogan Gate Rubbish Depot (R76656) Reserve Trust	Reserve No.: 76656 Public Purpose: Rubbish Depot Notified: 9 April 1954 File Reference: 17/10320
Birriwa Rubbish Depot (R76889) Reserve Trust	Reserve No.: 76889 Public Purpose: Rubbish Depot Notified: 9 July 1954 File Reference: 17/10320
Harden Rubbish Depot (R76891) Reserve Trust	Reserve No.: 76891 Public Purpose: Rubbish Depot Notified: 9 July 1954 File Reference: 17/10320
Narrabri Night Soil and Rubbish Depot (Addition) (R77055) Reserve Trust	Reserve No.: 77055 Public Purpose: Night Soil and Rubbish Depot (Addition) Notified: 17 September 1954 File Reference: 17/10320

[n2018-169]

### APPOINTMENT OF TRUST BOARD MEMBERS

Pursuant to section 93 of the *Crown Lands Act 1989*, the persons whose names are specified in Column 1 of the Schedule hereunder are appointed, for the terms of office specified in that Column, as members of the trust board for the reserve trust specified opposite thereto in Column 2, which has been established and appointed as trustee of the reserve referred to opposite thereto in Column 3 of the Schedule.

The Hon Paul Toole, MP  
Minister for Lands and Forestry

---

**Schedule**

<b>Column 1</b>	<b>Column 2</b>	<b>Column 3</b>
Angus Colin L'Estrange Moore (new member)  For a term commencing the date of this notice and expiring 11 February 2020.	Spring Plains Public Hall Trust	Reserve No. 58595 Public Purpose: public hall Notified: 19 February 1926  File Reference: ME81R92-002

[n2018-170]

---

**NOTIFICATION OF CLOSING OF A ROAD**

In pursuance of the provisions of the *Roads Act 1993*, the road hereunder described is closed and the lands comprised therein cease to be public road and the rights of passage and access that previously existed in relation to the road is extinguished. Upon closing, title to the land, comprising the former public road, vests in the body specified in the Schedule hereunder.

The Hon Paul Toole, MP  
Minister for Lands and Forestry

**DESCRIPTION**

*Parish – Coff; County – Fitzroy*  
*Land District – Bellingen; LGA – Coffs Harbour*

Road Closed: Lot 12 DP 1157157

File No: 16/05019

**SCHEDULE**

On closing, the land within Lot 12 DP 1157157 remains vested in the State of New South Wales as Crown land.

[n2018-171]

---

**NOTIFICATION OF CLOSING OF A ROAD**

In pursuance of the provisions of the *Roads Act 1993*, the road hereunder described is closed and the lands comprised therein cease to be public road and the rights of passage and access that previously existed in relation to the road is extinguished. Upon closing, title to the land, comprising the former public road, vests in the body specified in the Schedule hereunder.

The Hon Paul Toole, MP  
Minister for Lands and Forestry

**DESCRIPTION**

*Parish – Wolgan; County – Cook*  
*Land District – Lithgow; LGA – Lithgow*

Road Closed: Lot 1 DP 1237895

File No: 17/10359 RS

**SCHEDULE**

On closing, the land within Lot 1 DP 1237895 remains vested in the State of New South Wales as Crown land.

[n2018-172]

---

**NOTIFICATION OF CLOSING OF A ROAD**

In pursuance of the provisions of the *Roads Act 1993*, the road hereunder described is closed and the lands comprised therein cease to be public road and the rights of passage and access that previously existed in relation to the road is extinguished. Upon closing, title to the land, comprising the former public road, vests in the body specified in the Schedule hereunder.

The Hon Paul Toole, MP  
Minister for Lands and Forestry

**DESCRIPTION**

*Parishes – Smart, Nepickallina, Minnaminane; County – Courallie*

*Land District – Moree; LGA – Moree Plains*

Road Closed: Lots 1-3 DP 1233531

File No: 17/04691

**SCHEDULE**

On closing, the land within Lots 1-3 DP 1233531 remains vested in the State of New South Wales as Crown land.

[n2018-173]

---

**NOTIFICATION OF CLOSING OF A ROAD**

In pursuance of the provisions of the *Roads Act 1993*, the road hereunder described is closed and the lands comprised therein cease to be public road and the rights of passage and access that previously existed in relation to the road is extinguished. Upon closing, title to the land, comprising the former public road, vests in the body specified in the Schedule hereunder.

The Hon Paul Toole, MP  
Minister for Lands and Forestry

**DESCRIPTION**

*Parish – Dunbible; County – Rous*

*Land District – Murwillumbah; LGA – Tweed*

Road Closed: Lot 1 DP 1238282

File No: 17/06955

**SCHEDULE**

On closing, the land within Lot 1 DP 1238282 remains vested in the State of New South Wales as Crown land.

[n2018-174]

---

**NOTIFICATION OF CLOSING OF A ROAD**

In pursuance of the provisions of the *Roads Act 1993*, the road hereunder described is closed and the lands comprised therein cease to be public road and the rights of passage and access that previously existed in relation to the road is extinguished. Upon closing, title to the land, comprising the former public road, vests in the body specified in the Schedule hereunder.

The Hon Paul Toole, MP  
Minister for Lands and Forestry

**DESCRIPTION**

*Parishes – Hadleigh, Vicars, Gravesend; County – Burnett*

*Land District – Warialda; LGA – Gwydir*

Road Closed: Lots 1-8 DP 1235798, Lots 8-17 DP 1235799

File No: 17/02883

**SCHEDULE**

On closing, the land within Lots 2 – 8 DP 1235798, Lots 8, 10 -17 DP 1235799 remains vested in the State of New South Wales as Crown land.

On closing, the land within Lot 1 DP 1235798, and Lot 9 DP 1235799 will become vested in the State of New South Wales as Crown Land.

[n2018-175]

---

### NOTIFICATION OF CLOSING OF A ROAD

In pursuance of the provisions of the *Roads Act 1993*, the road hereunder described is closed and the lands comprised therein cease to be public road and the rights of passage and access that previously existed in relation to the road is extinguished. Upon closing, title to the land, comprising the former public road, vests in the body specified in the Schedule hereunder.

The Hon Paul Toole, MP  
Minister for Lands and Forestry

#### DESCRIPTION

*Parish – Tabratong; County – Oxley*  
*Land District – Warren; LGA – Warren*

Road Closed: Lot 2 DP 1237431

File No: 17/06511

#### SCHEDULE

On closing, the land within Lot 2 DP 1237431 remains vested in the State of New South Wales as Crown land.

[n2018-176]

---

### NOTIFICATION OF CLOSING OF A ROAD

In pursuance of the provisions of the *Roads Act 1993*, the road hereunder described is closed and the lands comprised therein cease to be public road and the rights of passage and access that previously existed in relation to the road is extinguished. Upon closing, title to the land, comprising the former public road, vests in the body specified in the Schedule hereunder.

The Hon Paul Toole, MP  
Minister for Lands and Forestry

#### DESCRIPTION

*Parish – Tabratong; County – Oxley*  
*Land District – Warren; LGA – Warren*

Road Closed: Lot 1 DP 1237430

File No: 17/06511

#### SCHEDULE

On closing, the land within Lot 1 DP 1237430 remains vested in the State of New South Wales as Crown land.

[n2018-177]

---

### NOTIFICATION OF CLOSING OF A ROAD

In pursuance of the provisions of the *Roads Act 1993*, the road hereunder described is closed and the lands comprised therein cease to be public road and the rights of passage and access that previously existed in relation to the road is extinguished. Upon closing, title to the land, comprising the former public road, vests in the body specified in the Schedule hereunder.

The Hon Paul Toole, MP  
Minister for Lands and Forestry

#### DESCRIPTION

*Parish – Cubbo; County – Baradine*  
*Land District – Narrabri; LGA – Narrabri*

Road Closed: Lot 1 DP 1204345

File No: 13/03991

#### SCHEDULE

On closing, the land within Lot 1 DP 1204345 remains vested in the State of New South Wales as Crown land.

[n2018-178]

---

**NOTIFICATION OF CLOSING OF A ROAD**

In pursuance of the provisions of the *Roads Act 1993*, the road hereunder described is closed and the lands comprised therein cease to be public road and the rights of passage and access that previously existed in relation to the road is extinguished. Upon closing, title to the land, comprising the former public road, vests in the body specified in the Schedule hereunder.

The Hon Paul Toole, MP  
Minister for Lands and Forestry

**DESCRIPTION**

*Parish – Lismore; County – Rous  
Land District – Lismore; LGA – Lismore*

Road Closed: Lot 2 DP 1237650

File No: 17/08093

**SCHEDULE**

On closing, the land within Lot 2 DP 1237650 remains vested in the State of New South Wales as Crown land.

[n2018-179]

---

**NOTIFICATION OF CLOSING OF A ROAD**

In pursuance of the provisions of the *Roads Act 1993*, the road hereunder described is closed and the lands comprised therein cease to be public road and the rights of passage and access that previously existed in relation to the road is extinguished. Upon closing, title to the land, comprising the former public road, vests in the body specified in the Schedule hereunder.

The Hon Paul Toole, MP  
Minister for Lands and Forestry

**DESCRIPTION**

*Parish – Bango; County – King  
Land District – Yass; LGA – Yass Valley*

Road Closed: Lot 2 DP 1237725

File No: 17/08812

**SCHEDULE**

On closing, the land within Lot 2 DP 1237725 remains vested in the State of New South Wales as Crown land.

[n2018-180]



## Other Government Notices

### ASSOCIATIONS INCORPORATION ACT 2009

#### Cancellation of Registration pursuant to Section 76

TAKE NOTICE that the registration of the following associations is cancelled by this notice pursuant to section 76 of the *Associations Incorporation Act 2009*.

ONE FIVE THREE CHURCH INCORPORATED	INC1600366
LAXMI CULTURAL CENTRE INCORPORATED	INC1301165
INSPIRATION HOUSE SERVICES INCORPORATED	Y0493815
URALLA COMMUNITY GARDEN INCORPORATED	INC1301491
FRONTIER PUBLISHING INC	Y0794503
PARADISE PARTNERS BOAT CLUB INCORPORATED	INC9895398
SYDNEY NORTH OFF ROAD CYCLISTS INCORPORATED	INC9895413
REDENEST INCORPORATED	INC9895414
WEFTS INCORPORATED	INC9895418
MEDOWIE AND WILLIAMTOWN BUSINESS ASSOCIATION INCORPORATED	INC9895421
SUSSEX INLET ENDURANCE RIDE INCORPORATED	INC9895428
MAYAPUR ACADEMY INCORPORATED	INC9895429
JESUS AND ME INCORPORATED	INC9895432
THE MCINTYRES RIDGE BUSHLAND ESTATE FIRE TRAIL MANAGEMENT ASSOCIATION INCORPORATED	INC9895436
BLACKTOWN WORKERS BASKETBALL ASSOCIATION INCORPORATED	INC1501778
ADONAY WORSHIP MINISTRY INCORPORATED	INC9895439
CAMP UNITY UNDENOMINATIONAL CHURCH CAMP INCORPORATED	INC9895443
KONQUERING KOKODA INC	INC9895446
NEWCASTLE ACTION SPORTS INCORPORATED	INC9895447
SOUTH COAST ANIMAL RESCUE INCORPORATED	INC9895449
GOOD HEART FOUNDATION INCORPORATED	INC9895450
NOW FUTURE ORPHANAGE INCORPORATED	INC9895452
ACTIVE OUTCOMES INCORPORATED	INC9895455
EGYPTIAN SCREEN INC	INC9895463
MT ZION COMMUNITY CHURCH INCORPORATED	INC9895465
GEURIE RODEO COMMITTEE INCORPORATED	INC9895466
SYDNEY GREAT LOVE CHURCH INCORPORATED	INC9895467
LAOS EDUCATION AND LIFESTYLE CENTRE INCORPORATED	INC9895469
JUSTICE FOR CHILDREN AUSTRALIA INCORPORATED	INC9895470
REGAL HUNTER TIGERS CRICKET CLUB INCORPORATED	INC9895471

Cancellation is effective as at the date of gazettal.

Dated this 17th day of January 2018.

Christine Gowland  
 Delegate of the Commissioner  
 NSW Fair Trading

[n2018-181]

**CHARITABLE TRUSTS ACT 1993**

## ORDER UNDER SECTION 12

## CY PRÈS SCHEME RELATING TO THE ESTATE OF DOROTHY NES

Section 9(1) of the *Charitable Trusts Act 1993* permits the application of property *cy prè*s where the spirit of the original trust can no longer be implemented.

By clause 5(a)(i) of her Will dated 25 May 2016, the testator Dorothy Nes gifted a 50% share of the residue of her estate to the organisation known as Gosford Dog Paws Pty Limited ACN 54 193 781 ('Gosford Dog Paws') for the general purposes of that organisation. On 30 June 2016 Gosford Dog Paws ceased operating what was then referred to as Gosford Dog Pound, situated at 1 Pateman Road, Erina. On 16 August 2017 ASIC received an application for voluntary deregistration of the organisation.

As at November 2016 the trust had an approximate value of \$280,000.

As Gosford Dog Paws no longer exists, it has become necessary to consider an alternative organisation which might apply the trust funds, *cy prè*s, in a manner which most nearly approximates the intentions of the donor.

The Central Coast Animal Care Facility Incorporated INC 1600950 has been identified as having a similar purpose to Gosford Dog Paws and has operated the Gosford Dog Pound situated at the same premises from which Gosford Dog Paws operated since 1 July 2016. Its objects include the provision of short term care for lost and mistreated animals and rehabilitation for injured and neglected animals. Like Gosford Dog Paws, it has a no-kill policy.

The executor of the estate agrees to a *cy prè*s scheme under section 12(1)(a) of the *Charitable Trusts Act 1993*.

This is an appropriate matter in which the Attorney General should approve a *cy prè*s scheme under s 12(1)(a) of the *Charitable Trusts Act 1993*.

I have previously approved a recommendation that the Attorney General establish a *cy prè*s scheme which would permit these charitable funds to be applied in a manner as close as possible to the original purposes of the trust.

Pursuant to section 12 of the *Charitable Trusts Act 1993*, I hereby order that the bequest in the Will of Dorothy Nes to 'Gosford Dog Paws Pty Limited ACN 54 193 781' be applied to the Central Coast Animal Care Facility Incorporated INC 1600950.

This order will take effect 21 days after its publication in the Government Gazette, in accordance with section 16(2) of the *Charitable Trusts Act 1993*.

Date of Order: 16 January 2018

SIGNED

M G SEXTON SC  
Solicitor General (Under delegation from the  
Attorney General)

[n2018-182]

**RETENTION OF TITLE**

His Excellency the Governor has been pleased to approve of the retention of the title "The Honourable" by The Honourable Gregory Stephen Pearce who served as a member of the Legislative Council from 1 November 2000 to 15 November 2017. Mr Pearce also served as a Minister from 3 April 2011 until 2 August 2013.

[n2018-183]

**SURVEYING AND SPATIAL INFORMATION ACT 2002**

## Registration of Surveyors

PURSUANT to the provisions of the *Surveying and Spatial Information Act 2002*, Section 10(1) (a), the undermentioned persons have been Registered as a Land Surveyor in New South Wales

Name	Address	Effective Date
CHRISODOULOU Evan	1/17 Ramsay Road Five Dock 2046	08 January 2018
COOK Dean William	Suite 202 2 Pembroke Street Epping 2121	12 December 2017

IVES Christopher Mark	Level 1, 810 Pacific Highway Gordon 2072	21 December 2017
PRETORIUS Neil	1/17 Ramsey Road North Dock 2065	12 December 2017

[n2018-184]

## SURVEYING AND SPATIAL INFORMATION ACT 2002

### Registration of Surveyors

PURSUANT to the provisions of the *Surveying and Spatial Information Act 2002*, Section 10(1) (a), the undermentioned persons have been Registered as a Mining Surveyor Unrestricted in New South Wales

Name	Address	Effective Date
DALTON Aaron Daniel	PO Box 7 Singleton 2330	08 January 2018
PRESCOTT Timothy James	158 Hebden Road Ravensworth 2320	10 January 2018
SMITH Andrew Bradley	779 Broke Road Singleton 2330	11 January 2018

Narelle Underwood  
President

Michael Spiteri  
Registrar

[n2018-185]

## TRANSPORT ADMINISTRATION ACT 1988

### LAND ACQUISITION (JUST TERMS COMPENSATION) ACT 1991

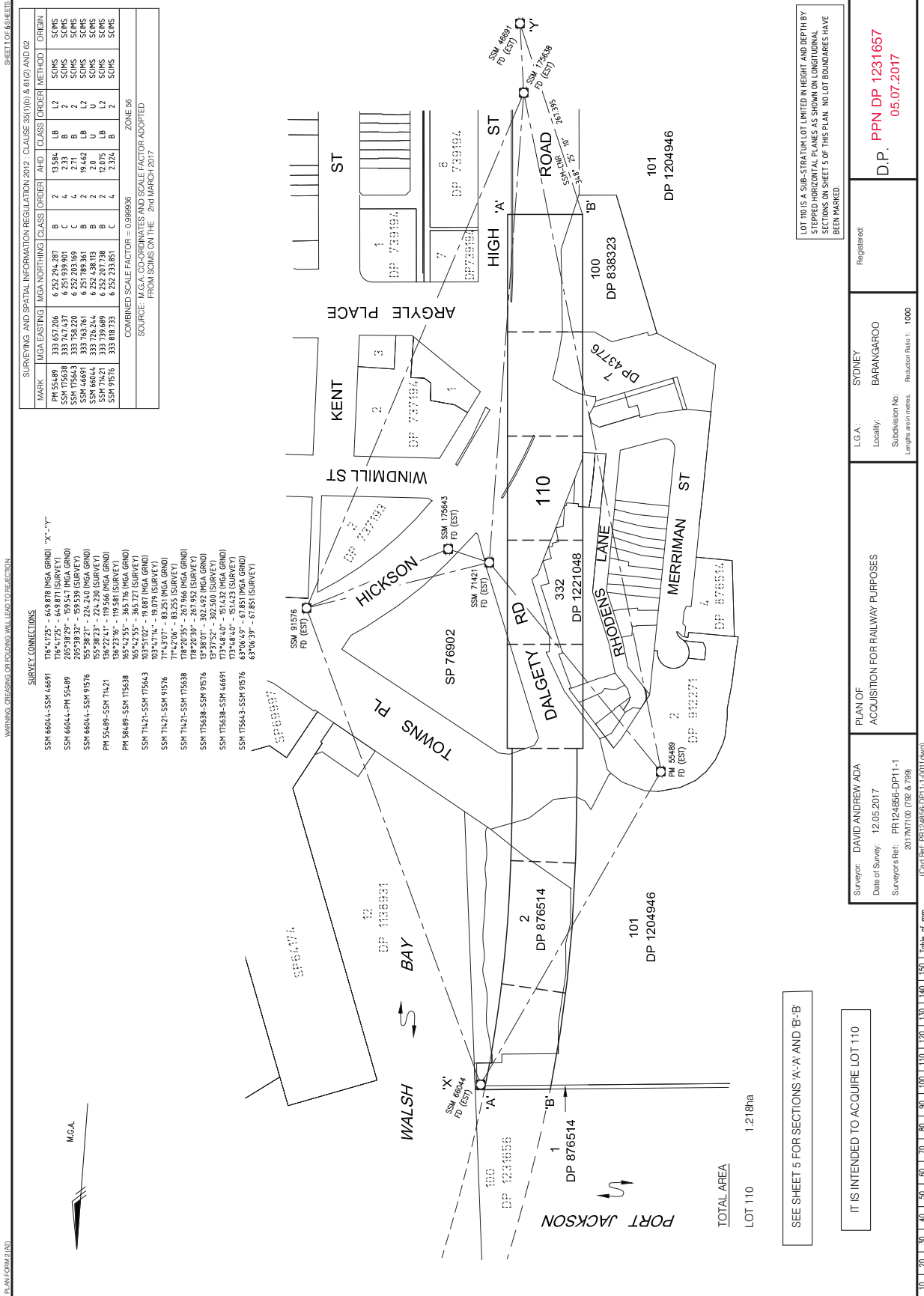
#### Notice of Compulsory Acquisition of Land in the Local Government Area of Sydney

Transport for NSW by its delegate declares, with the approval of Her Honour the Administrator, that the interest in land described in Schedule 1 below, is acquired by compulsory process under the provisions of the *Land Acquisition (Just Terms Compensation) Act 1991* as authorised by clause 11 of Schedule 1 of the *Transport Administration Act 1988* for the purposes of the *Transport Administration Act 1988*.

TOM GELLIBRAND  
Acting Program Director  
Sydney Metro  
Transport for NSW

#### SCHEDULE 1

The interest of Latish Govinrao Meshram and Anita Latish Meshram (as lessee) in Lot 110 in PPN DP1231657 (a copy of which is attached to this notice) under registered lease AF699125Y



PLAN FORM 2 (A2) SHEET 1 OF 6 SHEETS

MARK	INGR/EXISTING	MGN/NORTHING	CLASS	ORDER	AND	CLASS	ORDER	METHOD	ORIGIN
PM 55489	333 657 206	6 252 294 287	B	2	19384	LB	2	SCMS	SCMS
SSM 175638	333 747 437	6 251 993 901	C	4	233	B	2	SCMS	SCMS
SSM 46691	333 763 761	6 251 989 861	B	2	19462	LB	2	SCMS	SCMS
SSM 66044	333 776 244	6 252 438 113	B	2	2 0	U	2	SCMS	SCMS
SSM 71421	333 779 689	6 252 407 738	B	2	2 075	B	2	SCMS	SCMS
SSM 91516	333 887 333	6 252 233 951	C	4	23244	B	2	SCMS	SCMS

COMBINED SCALE FACTOR = 0.999936  
 SOURCE: M.G.A. CO-ORDINATES AND SCALE FACTOR ADOPTED FROM SCMS ON THE 2nd MARCH 2017  
 ZONE 56

**SURVEY CONNECTIONS**

SSM 66044-SSM 46691 176°41'25" - 649 878 (MGA GRND) "X"- "Y"  
 SSM 66044-PM 55489 205°38'29" - 195 547 (MGA GRND)  
 SSM 66044-SSM 91516 155°38'23" - 195 539 (SURVEY)  
 SSM 66044-SSM 175638 155°38'23" - 224 320 (SURVEY)  
 PM 55489-SSM 71421 136°22'41" - 179 566 (MGA GRND)  
 SSM 71421-SSM 91516 185°42'55" - 365 716 (MGA GRND)  
 SSM 71421-SSM 175638 103°51'52" - 393 740 (GRND)  
 SSM 71421-SSM 175643 103°47'14" - 19 079 (SURVEY)  
 SSM 71421-SSM 91516 71°42'05" - 83 251 (MGA GRND)  
 SSM 71421-SSM 175638 179°20'35" - 267 966 (MGA GRND)  
 SSM 175638-SSM 91516 19°38'07" - 302 497 (MGA GRND)  
 SSM 175638-SSM 175643 19°37'52" - 302 500 (SURVEY)  
 SSM 175638-SSM 46691 173°48'40" - 1514 32 (MGA GRND)  
 SSM 175638-SSM 91516 63°46'59" - 67 851 (MGA GRND)  
 SSM 175643-SSM 91516 65°10'39" - 67 851 (SURVEY)

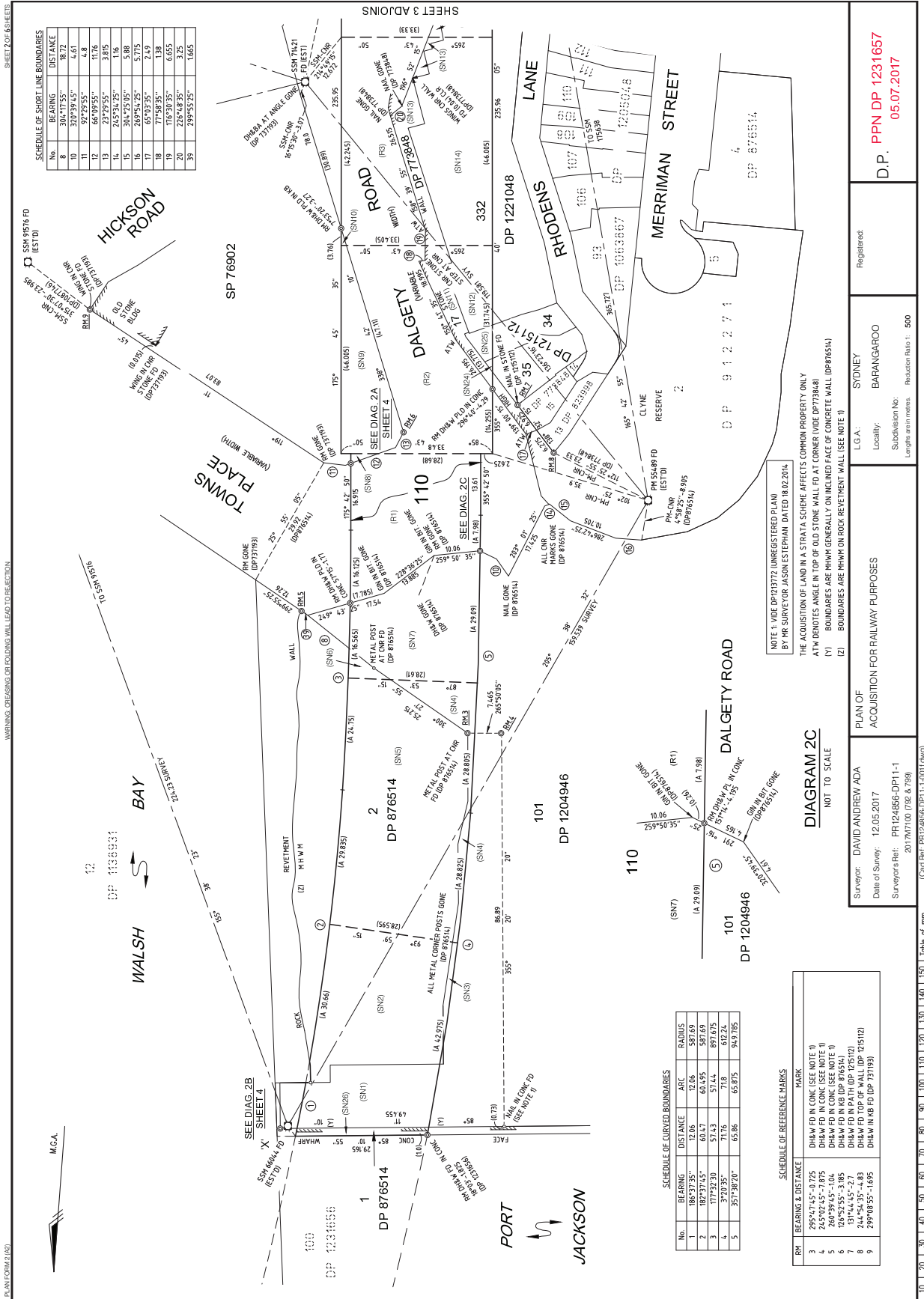
LOT 110 IS A SUB-STRAIUM LOT LIMITED IN HEIGHT AND DEPTH BY STEPPED HORIZONTAL PLANES AS SHOWN ON LONGITUDINAL SECTIONS ON SHEET 5 OF THIS PLAN. NO LOT BOUNDARIES HAVE BEEN MARKED.

Surveyor: DAVID ANDREW ADA	PLAN OF ACQUISITION FOR RAILWAY PURPOSES	L.G.A.: STONEY BARRANGAROO	Registered:
Date of Survey: 12.05.2017		Locality: BARRANGAROO	
Surveyor's Ref.: PR124856-DP11-1 2017M7100 (USE & 199)		Subdivision No: 1000	
(Cont Ref: PR124856-DP11-1-0011.rwg)		Reduction Ratio: 1: 1000	

SEE SHEET 5 FOR SECTIONS A-A' AND B-B'

IT IS INTENDED TO ACQUIRE LOT 110

TOTAL AREA  
 LOT 110 1.218ha



**SCHEDULE OF SHORT LINE BOUNDARIES**

No.	BEARING	DISTANCE
1	18°17'	18.72
2	329°38'31"	4.9
3	92°27'55"	4.9
4	117°6'	11.76
5	237°29'55"	3.815
6	245°34'25"	1.16
7	304°25'05"	5.88
8	269°54'25"	5.775
9	55°02'35"	2.419
10	173°39'35"	1.28
11	112°29'35"	3.25
12	226°48'35"	3.25
13	299°53'25"	1.665

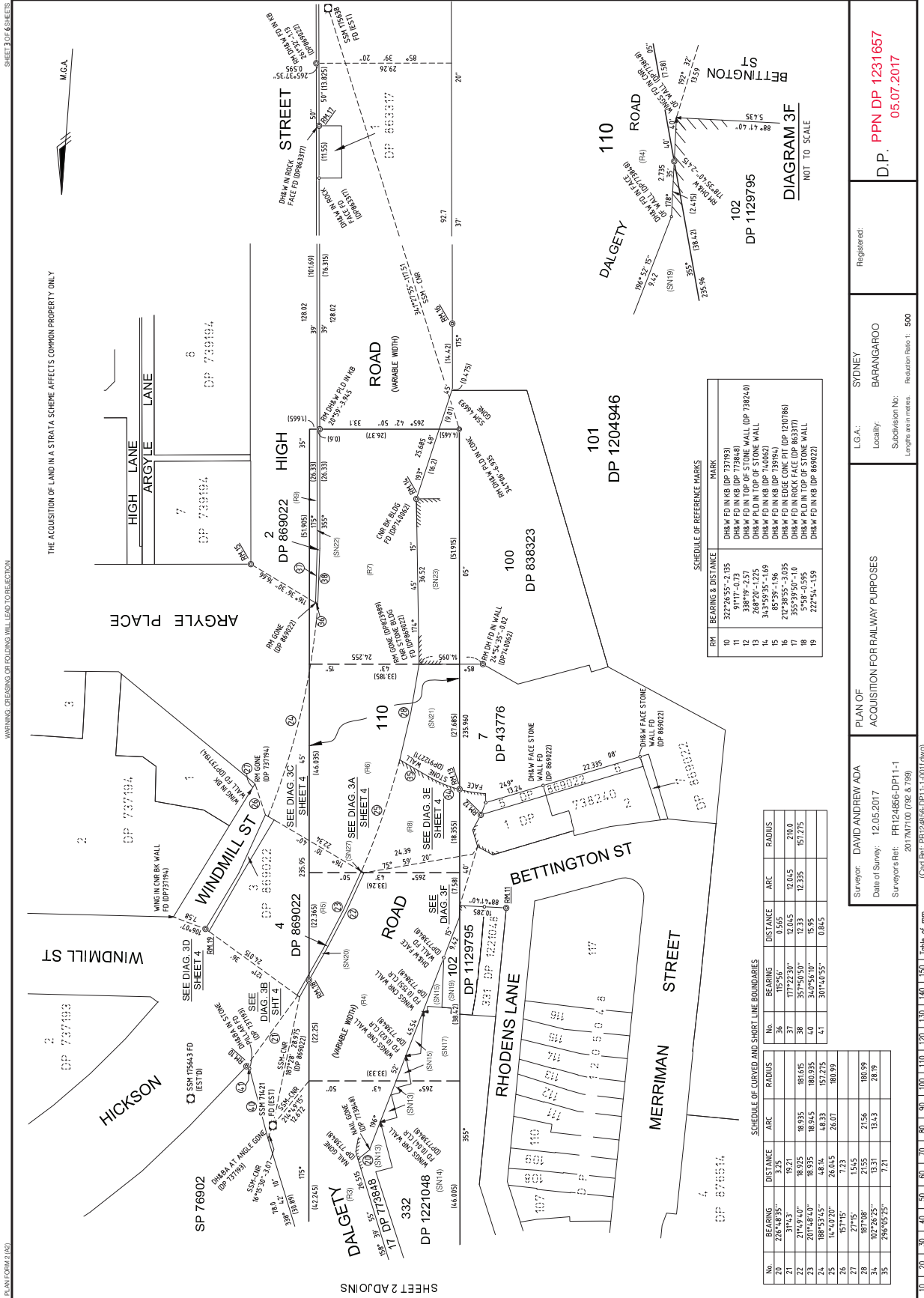
**SCHEDULE OF CURVED BOUNDARIES**

No.	BEARING	DISTANCE	ARC	RADIUS
1	186°27'35"	52.67	57.06	587.69
2	102°37'45"	60.47	60.05	587.69
3	177°32'30"	57.43	57.44	897.615
4	320°35"	71.76	71.8	612.24
5	357°38'30"	65.86	65.875	949.785

**SCHEDULE OF REFERENCE MARKS**

RM	BEARING & DISTANCE	MARK
3	285°17'55"-1.775	DH&M FD IN CONC (SEE NOTE 1)
4	245°20'25"-3.815	DH&M FD IN CONC (SEE NOTE 1)
5	260°39'45"-1.04	DH&M FD IN CONC (SEE NOTE 1)
6	126°52'55"-3.185	DH&M FD IN CONC (SEE NOTE 1)
7	131°44'45"-2.7	DH&M FD IN CONC (SEE NOTE 1)
8	299°08'35"-1.695	DH&M FD IN CONC (SEE NOTE 1)
9	299°08'35"-1.695	DH&M FD IN CONC (SEE NOTE 1)

WARNING: CUTTINGS OR FOLDINGS WILL LEAD TO DEFORMATION



SHEET 2 ADJOINS

SHEET 3 OF 6 SHEETS

M.G.A.

THE ACQUISITION OF LAND IN A STRATA SCHEME AFFECTS COMMON PROPERTY ONLY

WARRING, CEASING OR FOLDING WILL LEAD TO REJECTION

PLAN FORM 2 (A2)

**SCHEDULE OF REFERENCE MARKS**

RM	BEARING & DISTANCE	MARK
10	327°26'55"-2.135	DHW FDI IN KB (DP 73793)
11	317°17'-0.73	DHW FDI IN KB (DP 73848)
12	338°19'-2.57	DHW FDI IN TOP OF STONE WALL (DP 73824)
13	268°20'-1.725	DHW FDI IN TOP OF STONE WALL
14	346°59'-1.69	DHW FDI IN RB (DP 73802)
15	35°52'-1.84	DHW FDI IN RB (DP 73802)
16	212°39'55"-3.035	DHW FDI IN EDGE CONC PIT (DP 120788)
17	355°39'30"-1.0	DHW FDI IN ROCK FACE (DP 86337)
18	5°58'-4.595	DHW FDI IN TOP OF STONE WALL
19	227°54'-1.59	DHW FDI IN RB (DP 86902)

**SCHEDULE OF CURVED AND SHORT LINE BOUNDARIES**

No.	BEARING	DISTANCE	ARC	RADIUS
20	226°48'35"	3.25		
21	31°43'30"	19.21		
22	317°22'30"	72.05	120.15	210
23	207°48'20"	18.935		157.715
24	188°53'45"	4.84		157.715
25	14°40'20"	26.615	180.99	
26	157°15'	7.23		
27	27°15'	15.65		
28	107°26'55"	13.31		
29	296°05'25"	7.21		

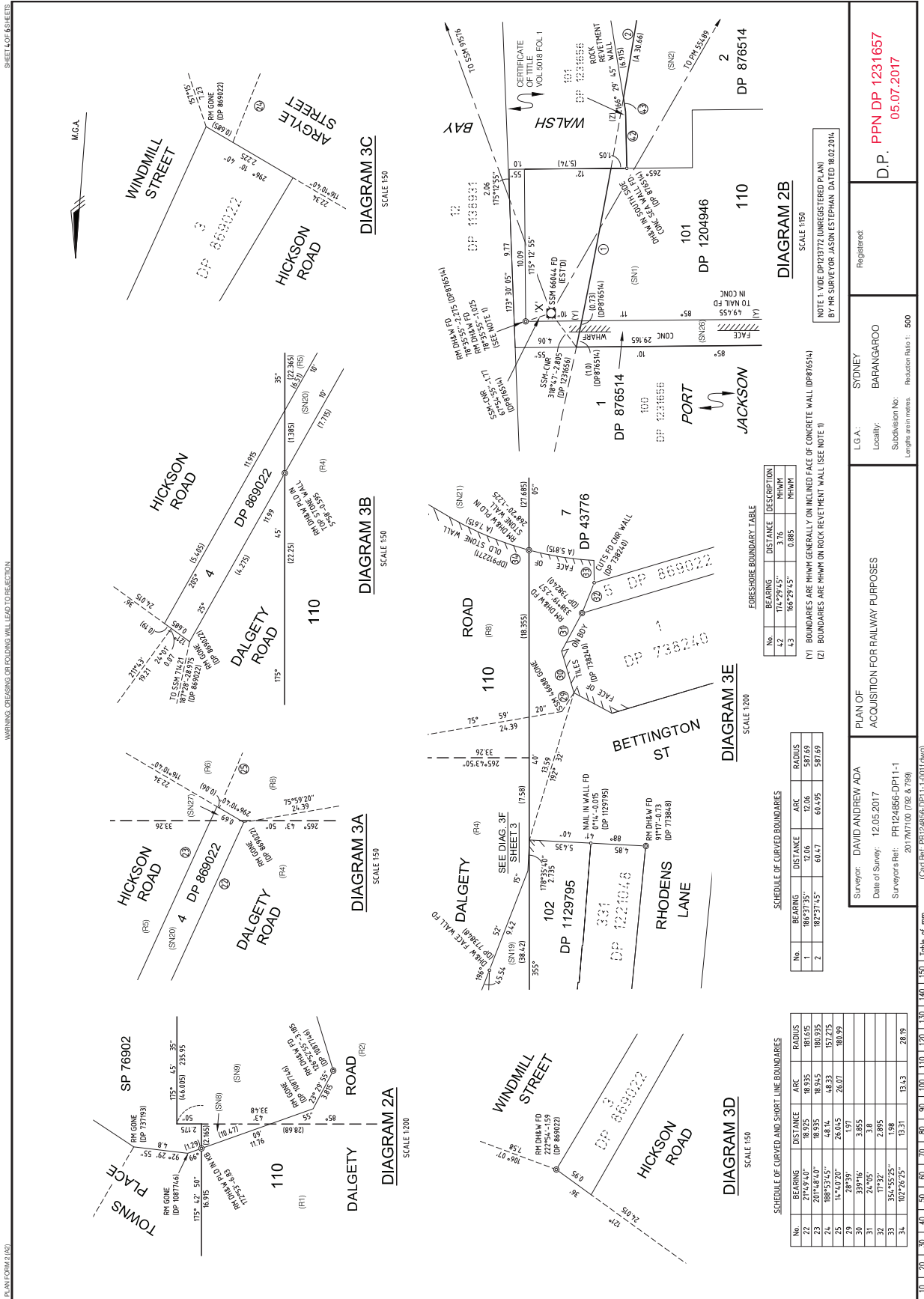
Surveyor: DAVID ANDREW ADA  
 Date of Survey: 12.05.2017  
 Surveyor's Ref.: PR124856-DP1 1-1  
 20/17M7100 (REV. 6/16)

Registered:  
 SYDNEY  
 Localities:  
 BARRANGARO  
 Subdivision No:  
 Length in metres: 500  
 Reduction Ratio: 1: 500

L.G.A.: SYDNEY  
 Locality: BARRANGARO  
 Subdivision No:  
 Length in metres: 500  
 Reduction Ratio: 1: 500

PLAN OF ACQUISITION FOR RAILWAY PURPOSES  
 D.P. PPN DP 1231657  
 05.07.2017

(Cont Ref: PR124856-DP1 1-1 (CONT. DWG))



PLAN FORM 2 (A2) SHEET LOT 6 SHEETS  
 WARNINGS: CHANGING OR FOLDING WILL LEAD TO DEFECTION

**SCHEDULE OF CURVED AND SHORT LINE BOUNDARIES**

No.	BEARING	DISTANCE	ARC	RADIUS
22	271°54'00"	18.925	18.935	181.615
23	207°48'40"	18.935	18.945	180.935
24	188°53'45"	48.14	48.33	157.275
25	15°40'20"	26.055	26.07	180.99
26	28°59'	1.97	1.97	1.97
27	24°45'	3.18	3.18	3.18
31	171°32'	2.895	2.895	2.895
32	354°55'25"	1.98	1.98	1.98
33	102°26'25"	13.31	13.43	28.19

**SCHEDULE OF CURVED BOUNDARIES**

No.	BEARING	DISTANCE	ARC	RADIUS
1	186°37'35"	12.06	12.06	587.69
2	182°37'45"	60.47	60.495	587.69

**FORESHORE BOUNDARY TABLE**

No.	BEARING	DISTANCE	DESCRIPTION
42	174°29'45"	3.76	MHWM
43	165°29'45"	0.885	MHWM

**DIAGRAM 2B**  
SCALE 1:50

NOTE 1: VIDE DP1213772 (UNREGISTERED PLAN)  
BY MR SURVEYOR JASON ESTEPIHAN, DATED 18.02.2014.

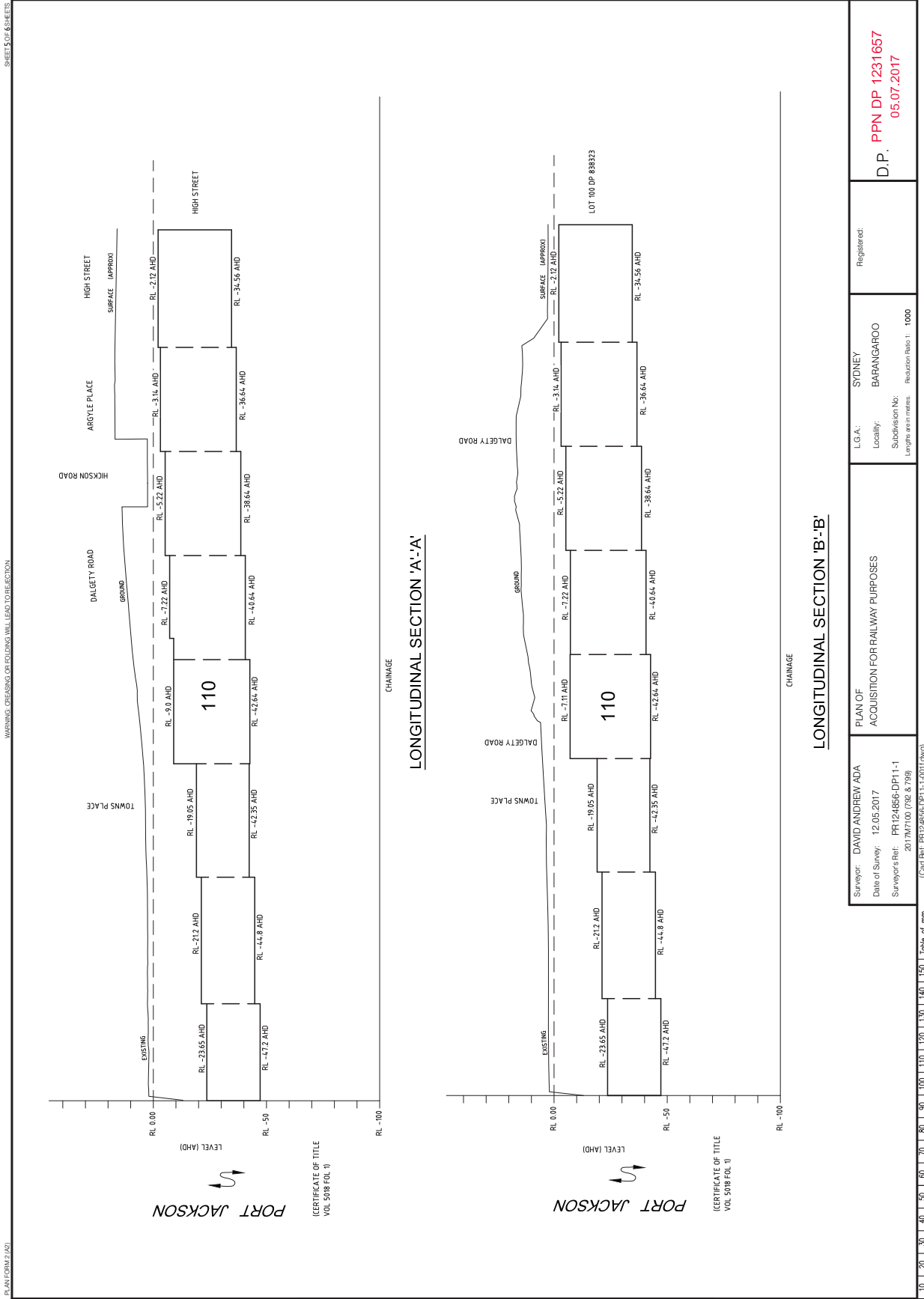
**DIAGRAM 3C**  
SCALE 1:50

Surveyor: **DAVID ANDREW ADA**  
 Date of Survey: 12.05.2017  
 Surveyor's Ref.: PR124856-DP1 1-1  
 20 17M7100 (02 & 09) (Cont Ref: PR124856-DP1 1-1-0011.rwg)

PLAN OF ACQUISITION FOR RAILWAY PURPOSES

L.G.A.: SYDNEY  
 Locality: BARANGAROO  
 Subdivision No: 500  
 Length: as in plan  
 Reduction Ratio: 1: 500

Registered:  
 D.P. **PPN DP 1231657**  
 05.07.2017





**TABLE OF AFFECTATIONS AND STRATUM LIMITS**

AFFECTED PROPERTY	PLAN NOTATION	APPROX GROUND SURFACE LEVEL (RL)	EXTENT OF ACQUISITION			TOTAL AREA (approx.) (m <sup>2</sup> )
			UPPER STRATUM LIMIT	LOWER STRATUM LIMIT	PART AREA (approx.) (m <sup>2</sup> )	
LOT 101 DP 1204846	(SN1)	2	RL -23.65	RL -47.20	385	
	(SN3)	2	RL -23.65	RL -47.20	25	
	(SN4)	3	RL -21.20	RL -44.80	171	
	(SN7)	3	RL -19.05	RL -42.35	650	
LOT 2 DP 678514	(SN5)	3	RL -21.20	RL -44.80	1434	
	(SN6)	3	RL -19.05	RL -42.35	30	
	(SN8)	5	RL -19.05	RL -42.35	7	
	(SN9)	7	RL -9.00	RL -42.64	356	
LOT 17 DP 775848	(SN10)	9	RL -9.00	RL -40.64	2	
	(SN11)	13	RL -7.11	RL -42.64	119	
	(SN14)	13	RL -5.22	RL -38.64	45	
	(SN15)	13	RL -5.22	RL -38.64	48	
LOT 32 DP 121048	(SN14)	14	RL -7.22	RL -40.64	681	
	(SN17)	15	RL -5.22	RL -35.64	150	
	(SN19)	16	RL -5.22	RL -35.64	50	
	(SN20)	16	RL -5.22	RL -35.64	17	
LOT 4 DP 868022	(SN21)	15	RL -3.14	RL -35.64	18	
	(SN21)	15	RL -3.14	RL -35.64	277	
	(SN23)	2	RL -2.12	RL -34.56	23	
	(SN23)	2	RL -2.12	RL -34.56	445	
LOT 35 DP 1215112	(SN24)	12	RL -7.11	RL -42.64	3	
	(SN25)	12	RL -7.11	RL -42.64	30	
	(SN25)	12	RL -23.65	RL -47.20	51	
	(SN25)	2	RL -23.65	RL -47.20	51	

AFFECTED ROAD	PLAN NOTATION	EXTENT OF ACQUISITION			TOTAL AREA (approx.) (m <sup>2</sup> )
		UPPER STRATUM LIMIT	LOWER STRATUM LIMIT	PART AREA (approx.) (m <sup>2</sup> )	
TOWNIS PLACE	(R1)	RL -19.05	RL -42.35	750	
	(R2)	RL -7.11	RL -42.64	684	
	(R3)	RL -7.22	RL -40.64	707	
	(R4)	RL -5.22	RL -38.64	1124	
DALGETY ROAD	(R5)	RL -5.22	RL -38.64	380	
	(R6)	RL -3.14	RL -35.64	133	
	(R7)	RL -3.14	RL -35.64	871	
	(R8)	RL -2.12	RL -34.56	1174	
HICKSON ROAD	(R9)	RL -2.12	RL -34.56	79	
	(R9)	RL -2.12	RL -34.56	79	

Surveyor: DAVID ANDREW ADA Date of Survey: 12.05.2017 Surveyor's Ref: PR124856-DP1 1-1 20/17/0109 (102 & 109)	PLAN OF ACQUISITION FOR RAILWAY PURPOSES	Registered: SYDNEY BARRANGARO	D.P. PPN DP 1231657 05.07.2017
(Cont Ref: PR124856-DP1-1-001.rwg)		L.G.A.: SYDNEY Locality: BARRANGARO Subdivision No: Length and in metres: Reduction Ratio 1: N/A	

10	20	30	40	50	60	70	80	90	100	110	120	130	140	150
Table of mm														

# COUNCIL NOTICES

## CABONNE COUNCIL

Roads Act 1993

Land Acquisition (Just Terms Compensation) Act 1991

Notice of Compulsory Acquisition of Land

Cabonne Council declares with the approval of His Excellency the Governor that the land described in the Schedule below, excluding any mines or deposits of minerals in the land; is acquired by compulsory process in accordance with the provisions of the *Land Acquisition (Just Terms Compensation) Act 1991* for realignment of a public road and bridge construction.

Dated at Molong this 30th day of November 2017

### SCHEDULE

Lot 14 DP1213706

S J HARDING, General Manager, PO Box 17, MOLONG NSW 2866

[n2018-187]

## LISMORE CITY COUNCIL

ROADS ACT 1993

Naming of Roads

Notice is hereby given that Lismore City Council, pursuant to section 162 of the *Roads Act 1993*, has officially named the road(s) as shown hereunder:

<b>Name</b>	<b>Locality</b>
MORONEY ROAD	Bentley
<b>Description</b>	
The part of Back Creek Road, Bentley to be renamed commences from the junction of Bucklands Bridge Road and continues south until the commencement of Kyogle Road.	
<b>Name</b>	<b>Locality</b>
PINECREST DRIVE	Goonellabah
<b>Description</b>	
This new road will be created within the subdivision of Lot 12 Deposited Plan 810542 also known as 15 Misty Valley View, Goonellabah.	
<b>Name</b>	<b>Locality</b>
FERGUSON CLOSE	Goonellabah
<b>Description</b>	
This new road will be created within the subdivision of Lot 12 Deposited Plan 810542 also known as 15 Misty Valley View, Goonellabah.	
<b>Name</b>	<b>Locality</b>
GEORGE DRIVE	Chilcotts Grass
<b>Description</b>	
This new road will be created within the subdivision of Lot 9 DP 262461 and Lot 9 DP 1202894 also known as 8-9 Willow Tree Drive, Chilcotts Grass	
<b>Name</b>	<b>Locality</b>
HIDDEN VALLEY CIRCUIT	Chilcotts Grass
<b>Description</b>	

This new road will be created within the subdivision of Lot 9 DP 262461 and Lot 9 DP 1202894 also known as 8-9 Willow Tree Drive, Chilcotts Grass

Name	Locality
LOFT CRESCENT	Chilcotts Grass

**Description**

This new road will be created within the subdivision of Lot 9 DP 262461 and Lot 9 DP 1202894 also known as 8-9 Willow Tree Drive, Chilcotts Grass

Name	Locality
MITCH PLACE	Chilcotts Grass

**Description**

This new road will be created within the subdivision of Lot 9 DP 262461 and Lot 9 DP 1202894 also known as 8-9 Willow Tree Drive, Chilcotts Grass

Name	Locality
DOUGLAS PLACE	Chilcotts Grass

**Description**

This new road will be created within the subdivision of Lot 9 DP 262461 and Lot 9 DP 1202894 also known as 8-9 Willow Tree Drive, Chilcotts Grass

Name	Locality
EVELYN WAY	Nimbin

**Description**

This new road will be created within subdivision of Lot 101 DP 1160622 also known as 198 Gungas Road, Nimbin

ROCHELLE HELLIER, Property Assistant, Lismore City Council, 43 Oliver Avenue, GOONELLABAH NSW 2480

GNB Ref: 0233

[n2018-188]

## LIVERPOOL CITY COUNCIL

### ROADS ACT 1993

#### Naming of Roads

Notice is hereby given that Liverpool City Council, pursuant to section 162 of the *Roads Act 1993*, has officially named the roads as shown hereunder for use within the locality of Leppington between Cowpasture Road, Camden Valley Way, and the Upper Canal:

Monarch Row  
Icarus Way  
Emperor Parade  
Ulysses Way  
Swallowtail Road

KIERSTEN FISHBURN, Chief Executive Officer, Liverpool City Council, Locked Bag 7064, LIVERPOOL BC NSW 1871

[n2018-189]

## MIDCOAST COUNCIL

### ERRATUM

In the notice referring to the Naming of Public Roads in the MidCoast Local Government Area, Folio 6730, 3 November 2017, the road name Brumby Lane was assigned with the incorrect road type. The correct road type for this road name is Brumby Close. This notice corrects that error.

[n2018-190]

**NEWCASTLE CITY COUNCIL**

Roads Act 1993, Section 16

Dedication of Land as Public Road

NOTICE is hereby given that in accordance with the provisions of section 16 of the *Road Act 1993*, the land held by Council as described in the Schedule below is hereby dedicated as public road.

JEREMY BATH, Chief Executive Officer, Newcastle City Council, PO Box 489, Newcastle, NSW 2300.

**SCHEDULE**

The land comprising part of the streets in the Parish of Newcastle, County of Northumberland, shown as road on DP 978941, shown highlighted on the attached plan.



[n2018-191]

**WINGECARRIBEE SHIRE COUNCIL**

Roads Act 1993, Section 10

Dedication of Land as Public Road

NOTICE is hereby given by Wingecarribee Shire Council, pursuant to section 16 of the *Roads Act 1993*, that the land described in the Schedule below is hereby dedicated as public road. Dated at Moss Vale 8 January, 2018.

Ann Prendergast, General Manager, Wingecarribee Shire Council, Civic Centre, 68 Elizabeth St, Moss Vale NSW 2577.

General Manager

**SCHEDULE**

Nicholson Street shown within Deposited Plan 758098 (Crown Plan 36-801).

[n2018-192]

**WOLLONGONG CITY COUNCIL**

Roads Act 1993 – Section 16

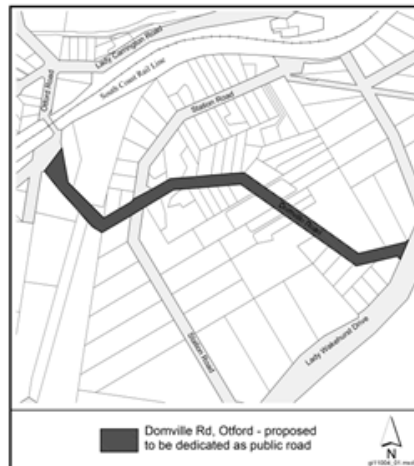
Notice of Dedication of Land as Public Road

NOTICE is hereby given that pursuant to section 16 of the *Roads Act 1993*, the land described in the Schedule below known as Domville Road, Otford, is hereby dedicated as public road.

D. FARMER, General Manager, Wollongong City Council, Locked Bag 8821, Wollongong DC NSW 2500.

## SCHEDULE

That portion of land shown hatched on the accompanying plan.



[n2018-193]

### WINGECARRIBEE SHIRE COUNCIL

#### HERITAGE ACT 1977

#### INTERIM HERITAGE ORDER NO. 7

Under Section 25 of the *Heritage Act 1977* Wingecarribee Council does by this order:

- (i) make an interim heritage order to cover the item of the environmental heritage specified or described in Schedule 'A'; and
- (ii) declare that the Interim Heritage Order shall apply to the curtilage or site of such item, being the land described in Schedule 'B'.

This Interim Heritage Order will lapse six months from the date that it is made unless the local council has passed a resolution before that date either:

- (1) in the case of an item which, in the council's opinion, is of local significance, to place the item on the heritage schedule of a local environmental plan with appropriate provisions for protecting and managing the item; and
- (2) in the case of an item which in the council's opinion, is of State heritage significance, nominate the item for inclusion on the State Heritage Register.

Mark Pepping  
Deputy General Manager  
Corporate Strategy and Development  
Wingecarribee Shire Council  
PO Box 141, Moss Vale NSW 2577

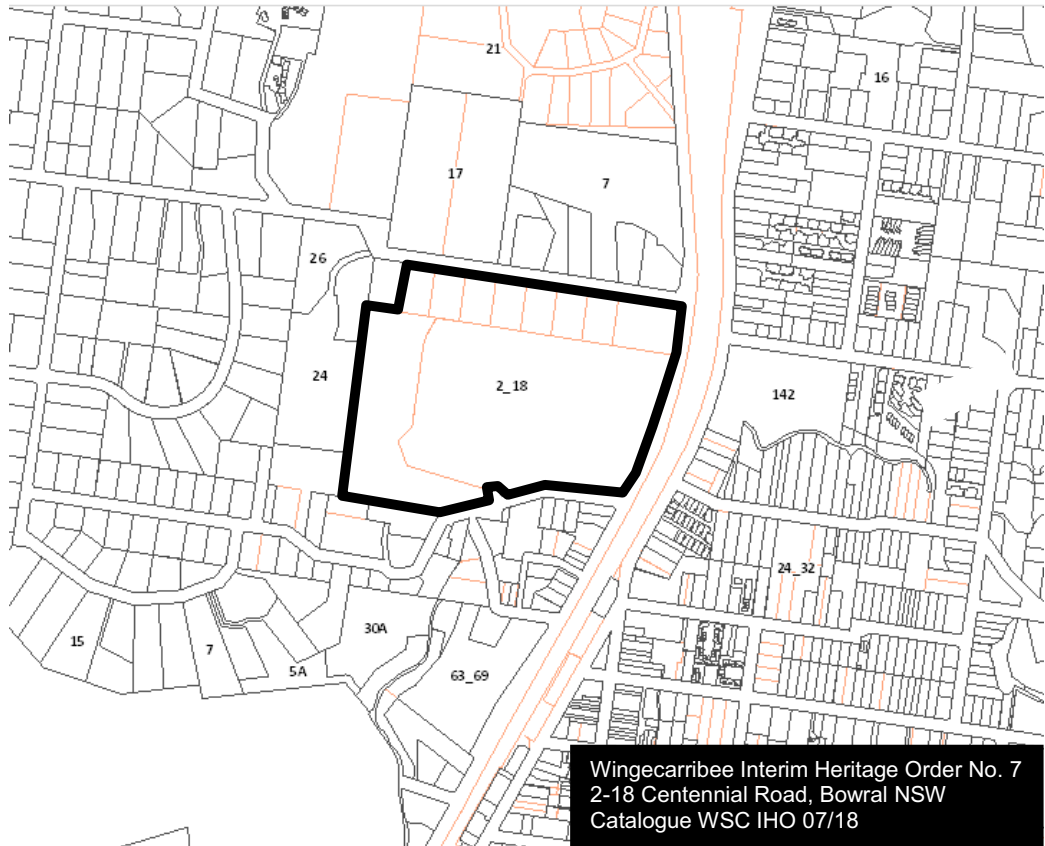
17 January 2018

#### Schedule 'A'

The property known as "Our Lady of the Sacred Heart" situated at 2-18 Centennial Road, Bowral, on the land described in Schedule 'B'.

#### Schedule 'B'

All those pieces or parcels of land known as Lot 1 and Lot 2 DP 1101892 and Lots 4-11 DP 1109214, shown edged heavy black on the plan catalogued WSC IHO 07/18.



[n2018-194]