



Victoria Government Gazette

No. S 191 Monday 20 October 2003
By Authority, Victorian Government Printer

Land Acquisition and Compensation Act 1986

FORM 7

Notice of Acquisition

Compulsory Acquisition of Interest in Land

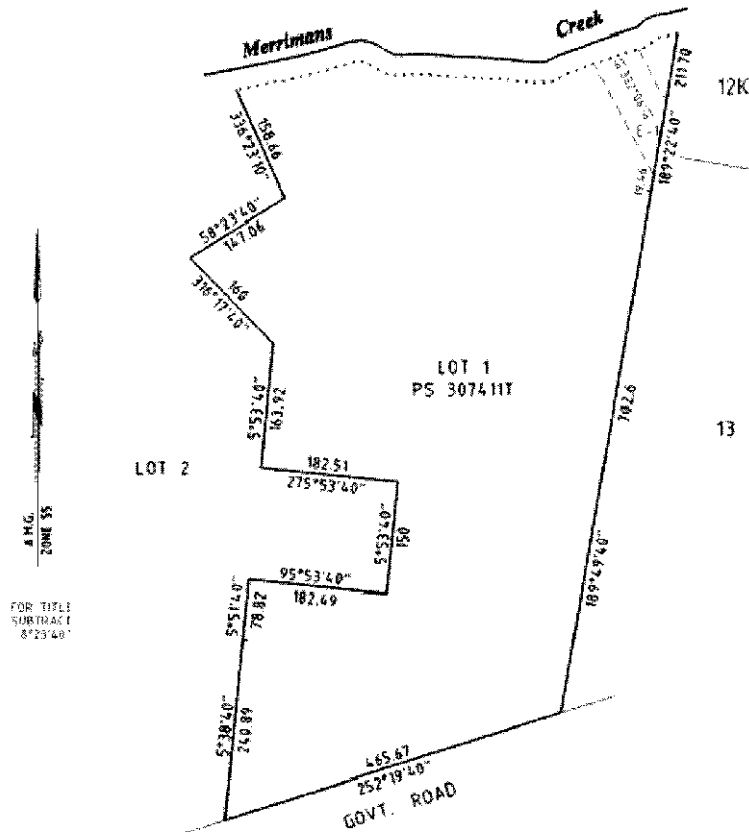
Basslink Pty Limited ("the Authority") declares that by this notice it acquires the following interest in the land described as

| | | |
|----------|----------------------|------------------------------|
| Willung | Vol 10073, Folio 497 | Lot 1, PS 307411T |
| Rosedale | Vol 7455, folio 167 | Crown Allotment 310C, NO SEC |

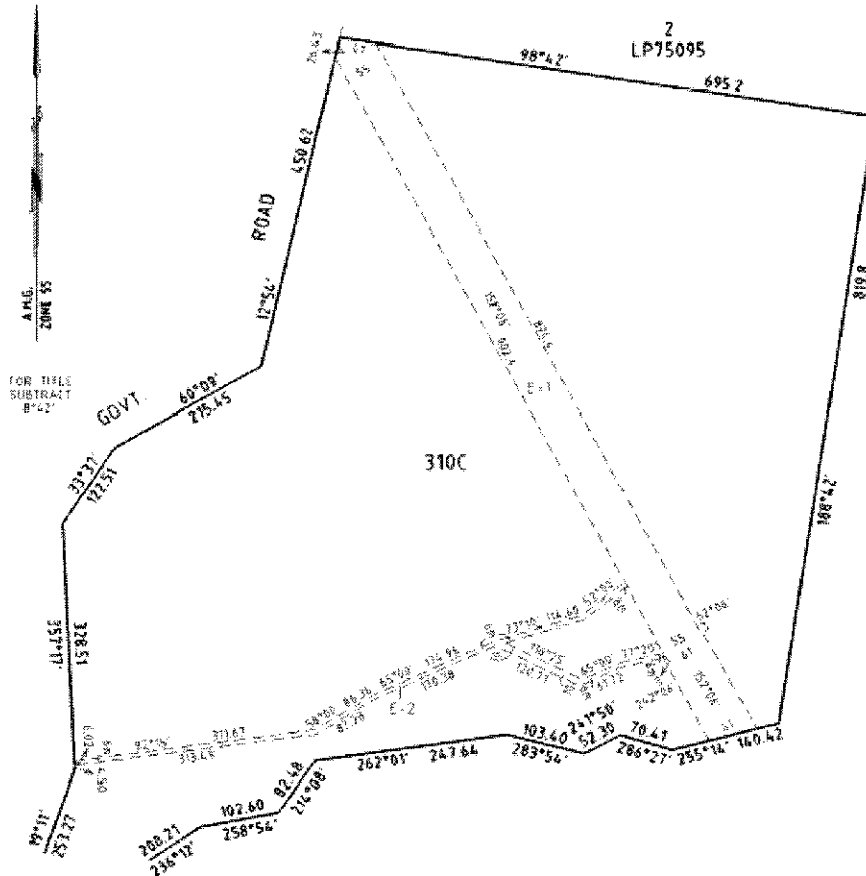
The Interest acquired over the land described above is an "easement" as defined by section 86(3) of the **Electricity Industry Act 2000** (Vic), exercisable by the Authority for the purposes of erecting or laying power lines (or both) and maintaining power lines.

Published with the authority of Basslink Pty Limited, ACN 090 996 231 of Level 12, 356 Collins Street, Melbourne, Victoria 3000.

The easement being acquired by Basslink Pty Limited is referred to on the attached plan(s) as E-1 to E-2.



SPECIAL



Dated 20 October 2003

For and of behalf of Basslink Pty Limited
 MEG O'KEEFE
 Legal Counsel
 Basslink Pty Limited.

Land Acquisition and Compensation Act 1986

FORM 7

Notice of Acquisition

Compulsory Acquisition of Interest in Land

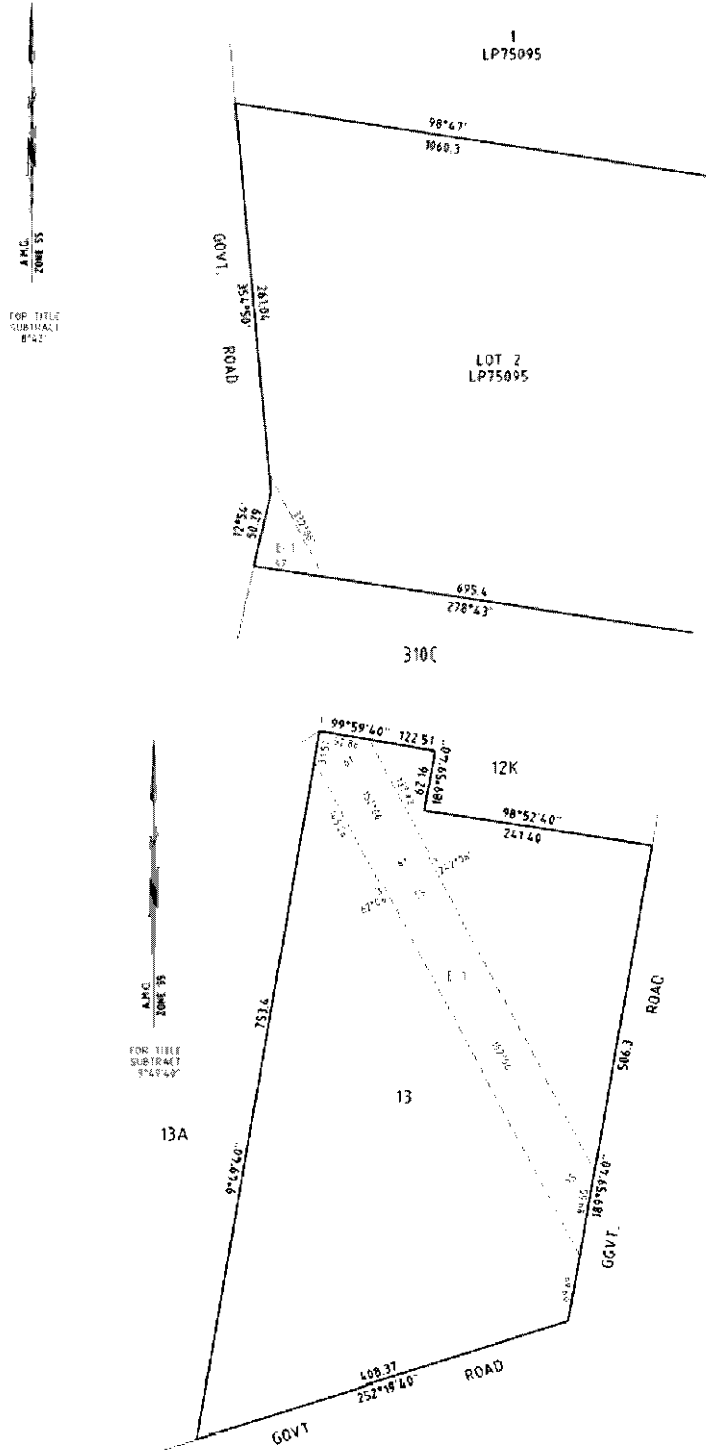
Basslink Pty Limited ("the Authority") declares that by this notice it acquires the following interest in the land described as

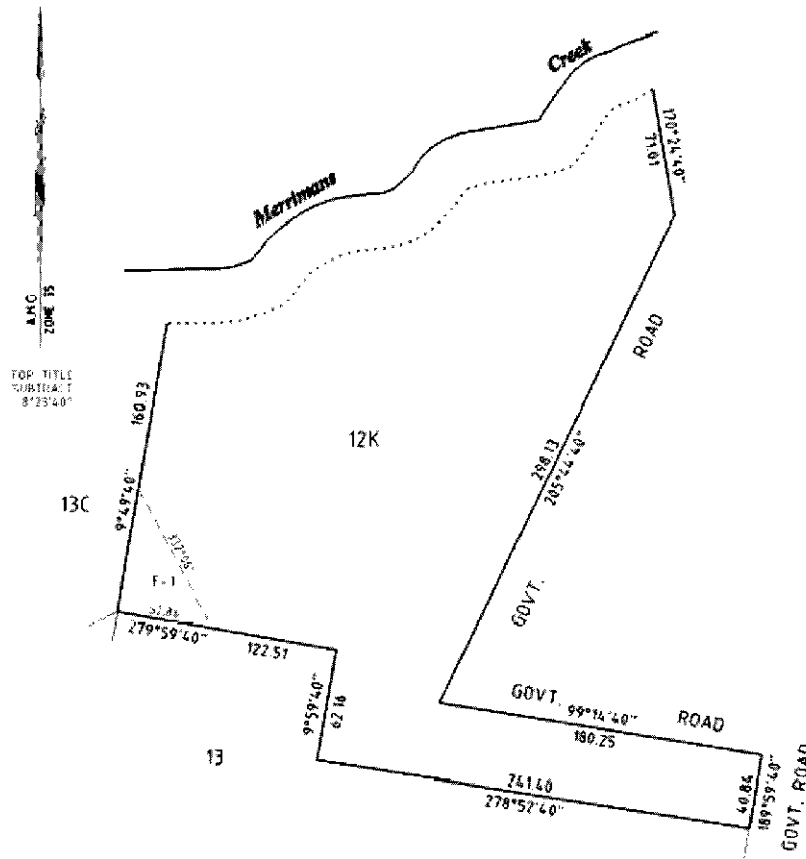
| | | |
|----------|---------------------|-----------------------------|
| Rosedale | Vol 8617, Folio 043 | Lot 2, LP75095 |
| Willung | Vol 3611, Folio 106 | Crown Allotment 12K, NO SEC |
| Willung | Vol 7786, Folio 073 | Crown Allotment 13, NO SEC |

The Interest acquired over the land described above is an "easement" as defined by section 86(3) of the **Electricity Industry Act 2000** (Vic), exercisable by the Authority for the purposes of erecting or laying power lines (or both) and maintaining power lines.

Published with the authority of Basslink Pty Limited, ACN 090 996 231 of Level 12, 356 Collins Street, Melbourne, Victoria 3000.

The easement being acquired by Basslink Pty Limited is referred to on the attached plan(s) as E-1 to E-2.





Dated 20 October 2003

For and of behalf of Basslink Pty Limited
 MEG O'KEEFE
 Legal Counsel
 Basslink Pty Limited.

Land Acquisition and Compensation Act 1986

FORM 7

Notice of Acquisition

Compulsory Acquisition of Interest in Land

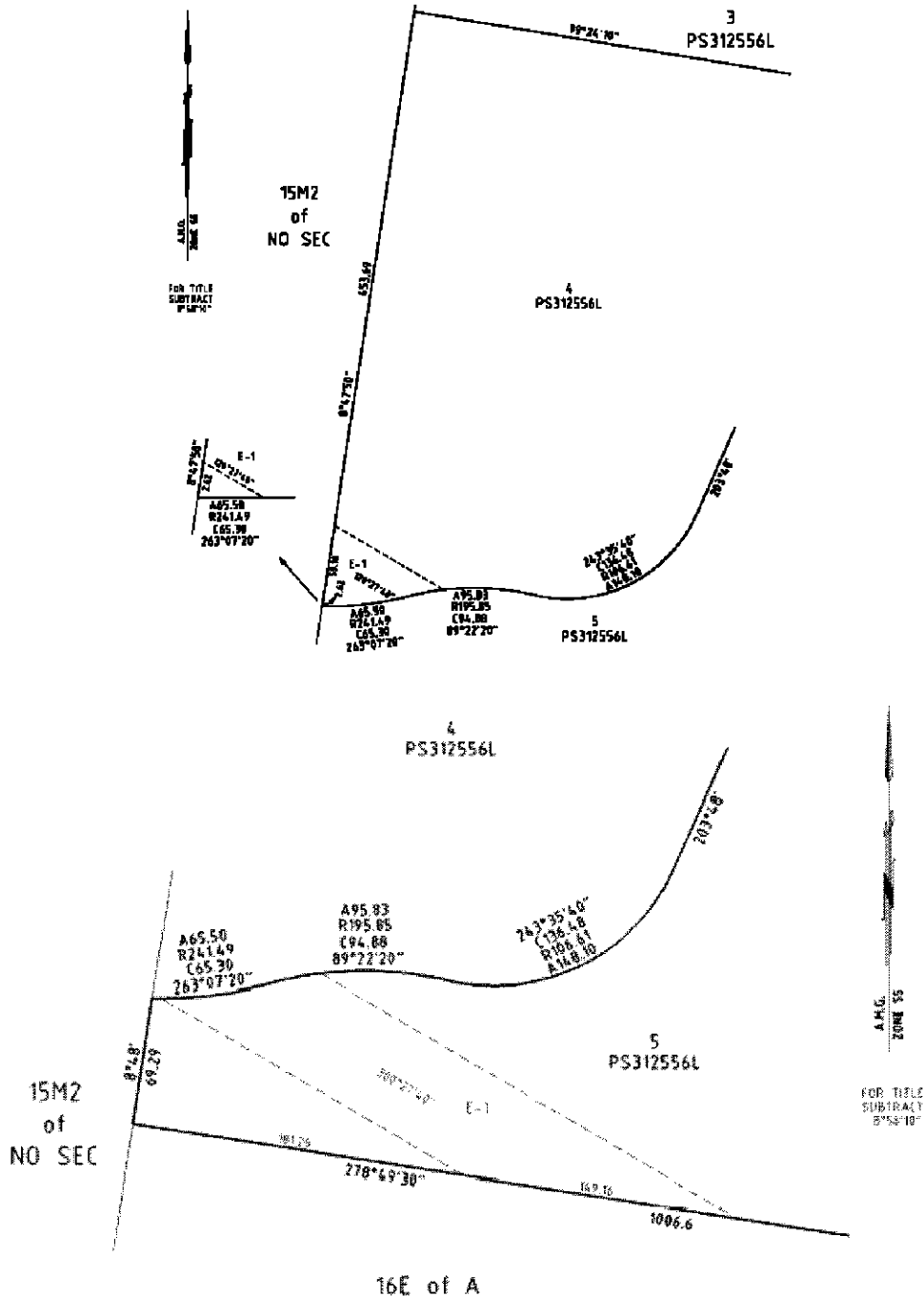
Basslink Pty Limited ("the Authority") declares that by this notice it acquires the following interest in the land described as

| | | |
|----------|----------------------|------------------|
| Loy Yang | Vol 10119, Folio 233 | Lot 5, PS312556L |
| Loy Yang | Vol 10119, Folio 232 | Lot 4, PS312556L |

The Interest acquired over the land described above is an "easement" as defined by section 86(3) of the **Electricity Industry Act 2000** (Vic), exercisable by the Authority for the purposes of erecting or laying power lines (or both) and maintaining power lines.

Published with the authority of Basslink Pty Limited, ACN 090 996 231 of Level 12, 356 Collins Street, Melbourne, Victoria 3000.

The easement being acquired by Basslink Pty Limited is referred to on the attached plan(s) as E-1 to E-2.



Dated 20 October 2003

For and of behalf of Basslink Pty Limited
MEG O'KEEFE
Legal Counsel
Basslink Pty Limited.

Land Acquisition and Compensation Act 1986

FORM 7

Notice of Acquisition

Compulsory Acquisition of Interest in Land

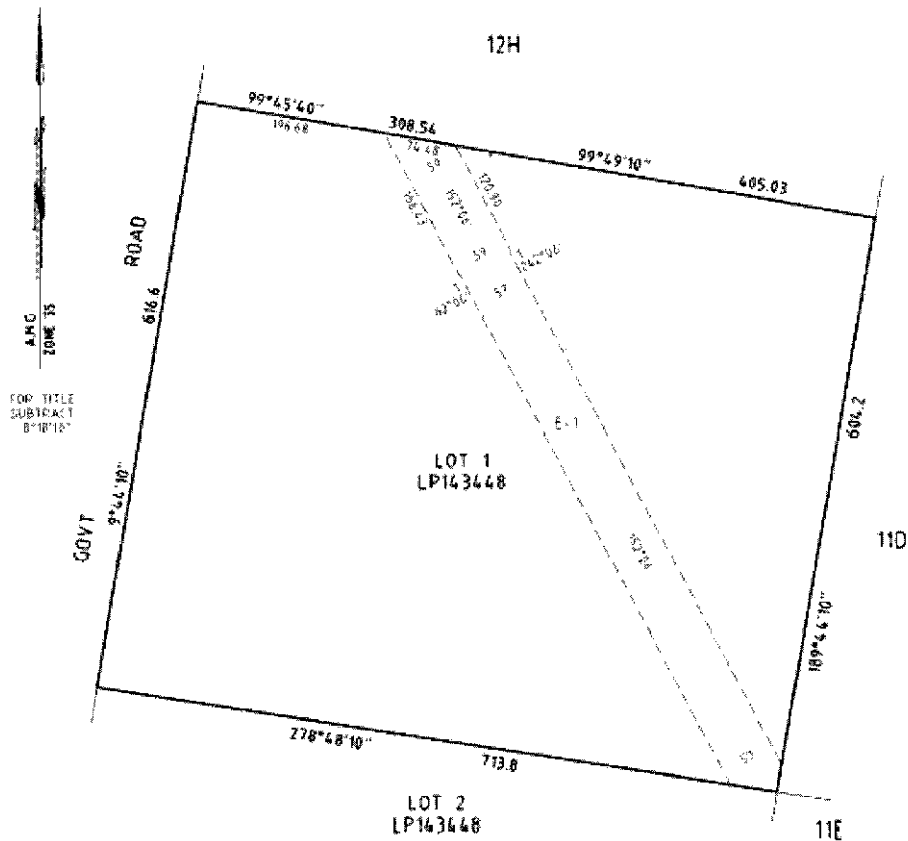
Basslink Pty Limited ("the Authority") declares that by this notice it acquires the following interest in the land described as

Loy Yang Vol 9525 Folio 207 Lot 1, LP 143448

The Interest acquired over the land described above is an "easement" as defined by section 86(3) of the **Electricity Industry Act 2000** (Vic), exercisable by the Authority for the purposes of erecting or laying power lines (or both) and maintaining power lines.

Published with the authority of Basslink Pty Limited, ACN 090 996 231 of Level 12, 356 Collins Street, Melbourne, Victoria 3000.

The easement being acquired by Basslink Pty Limited is referred to on the attached plan as E-1 to E-2.



Dated 20 October 2003

For and of behalf of Basslink Pty Limited
MEG O'KEEFE
Legal Counsel
Basslink Pty Limited.

Land Acquisition and Compensation Act 1986

FORM 7

Notice of Acquisition

Compulsory Acquisition of Interest in Land

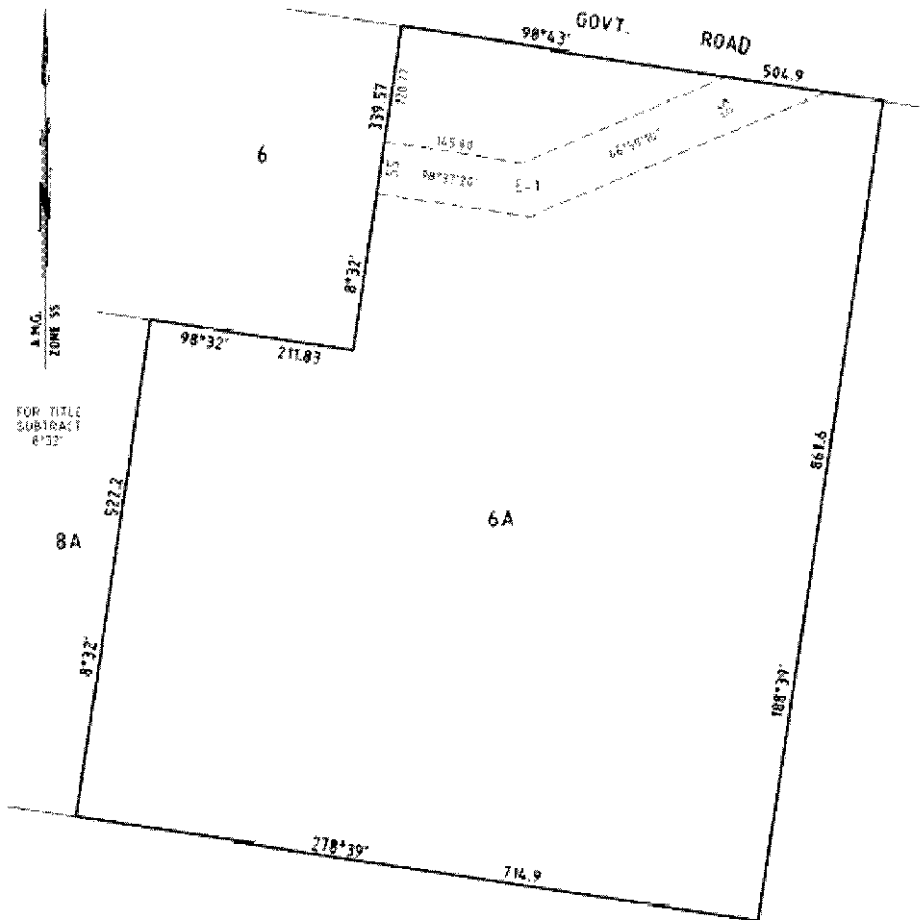
Basslink Pty Limited ("the Authority") declares that by this notice it acquires the following interest in the land described as

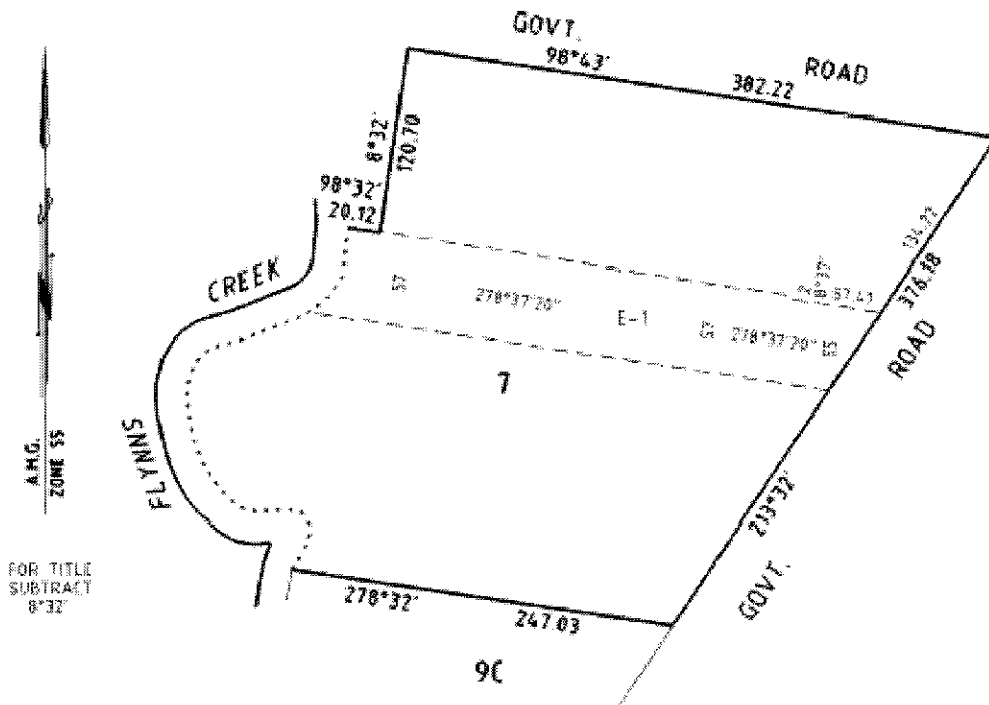
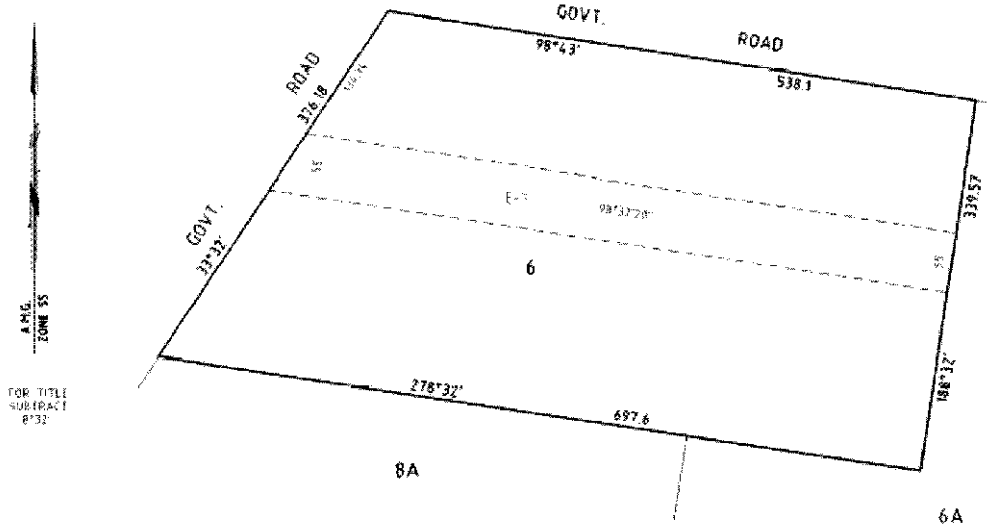
| | | |
|-----------|---------------------|--------------------|
| Tong Bong | Vol 2937, Folio 347 | Crown Allotment 6A |
| Tong Bong | Vol 6961, Folio 143 | Crown Allotment 6 |
| Tong Bong | Vol 7336, Folio 011 | Crown Allotment 7 |

The Interest acquired over the land described above is an "easement" as defined by section 86(3) of the **Electricity Industry Act 2000** (Vic), exercisable by the Authority for the purposes of erecting or laying power lines (or both) and maintaining power lines.

Published with the authority of Basslink Pty Limited, ACN 090 996 231 of Level 12, 356 Collins Street, Melbourne, Victoria 3000.

The easement being acquired by Basslink Pty Limited is referred to on the attached plan(s) as E-1 to E-2.





Dated 20 October 2003

For and of behalf of Basslink Pty Limited
MEG O'KEEFE
Legal Counsel
Basslink Pty Limited.

Land Acquisition and Compensation Act 1986

FORM 7

Notice of Acquisition

Compulsory Acquisition of Interest in Land

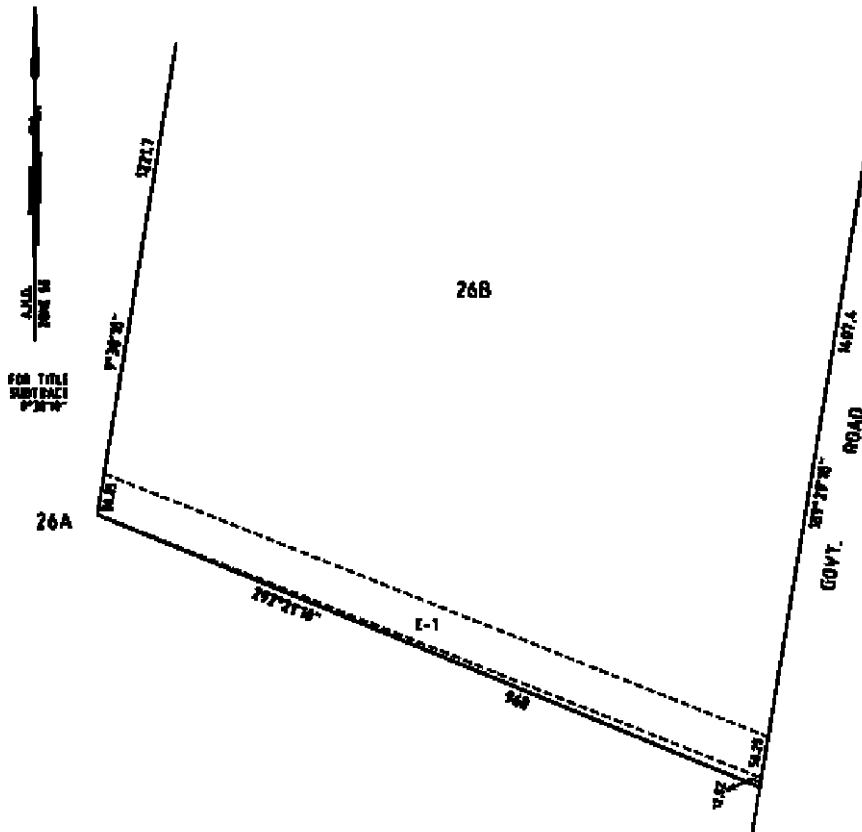
Basslink Pty Limited ("the Authority") declares that by this notice it acquires the following interest in the land described as

Stradbroke Vol 6588, Folio 475 Crown Allotment 26B, SEC B

The Interest acquired over the land described above is an "easement" as defined by section 86(3) of the **Electricity Industry Act 2000** (Vic), exercisable by the Authority for the purposes of erecting or laying power lines (or both) and maintaining power lines.

Published with the authority of Basslink Pty Limited, ACN 090 996 231 of Level 12, 356 Collins Street, Melbourne, Victoria 3000.

The easement being acquired by Basslink Pty Limited is referred to on the attached plan as E-1 to E-2.



Dated 20 October 2003

For and of behalf of Basslink Pty Limited
MEG O'KEEFE
Legal Counsel
Basslink Pty Limited.

Land Acquisition and Compensation Act 1986

FORM 7

Notice of Acquisition

Compulsory Acquisition of Interest in Land

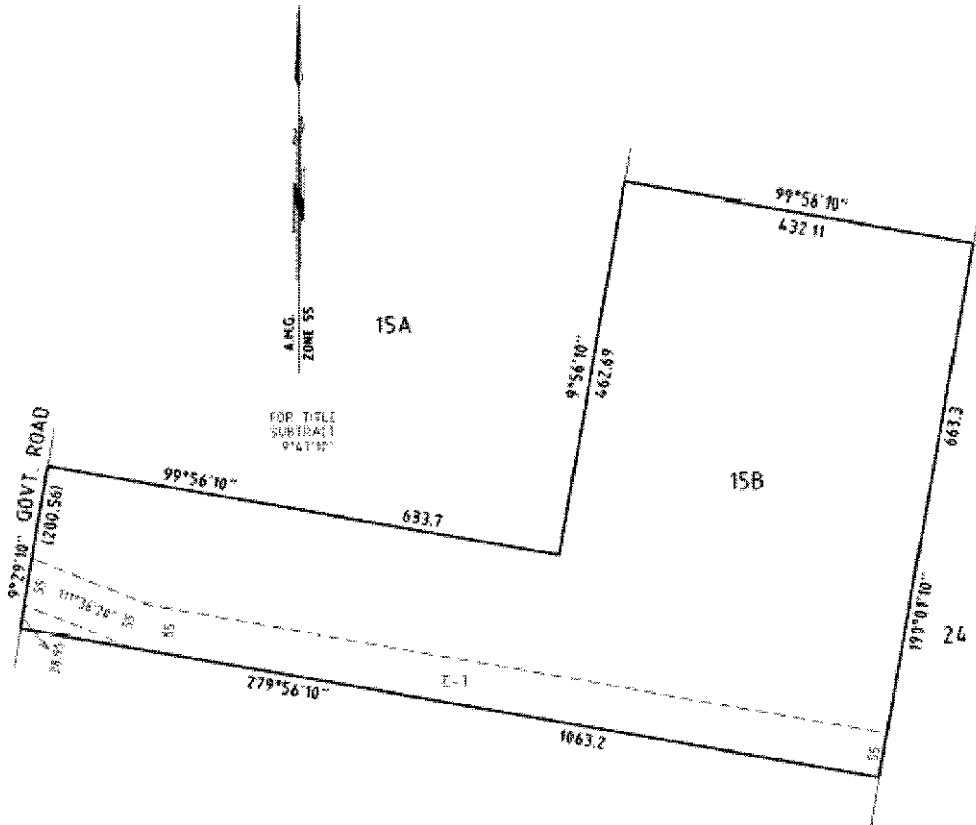
Basslink Pty Limited ("the Authority") declares that by this notice it acquires the following interest in the land described as

Stradbroke Vol 9449, Folio 620 Crown Allotment 15B, SEC B

The Interest acquired over the land described above is an "easement" as defined by section 86(3) of the **Electricity Industry Act 2000** (Vic), exercisable by the Authority for the purposes of erecting or laying power lines (or both) and maintaining power lines.

Published with the authority of Basslink Pty Limited, ACN 090 996 231 of Level 12, 356 Collins Street, Melbourne, Victoria 3000.

The easement being acquired by Basslink Pty Limited is referred to on the attached plan as E-1 to E-2.



Dated 20 October 2003

For and of behalf of Basslink Pty Limited
MEG O'KEEFE
Legal Counsel
Basslink Pty Limited.

Land Acquisition and Compensation Act 1986

FORM 7

Notice of Acquisition

Compulsory Acquisition of Interest in Land

Basslink Pty Limited ("the Authority") declares that by this notice it acquires the following interest in the land described as

Stradbroke

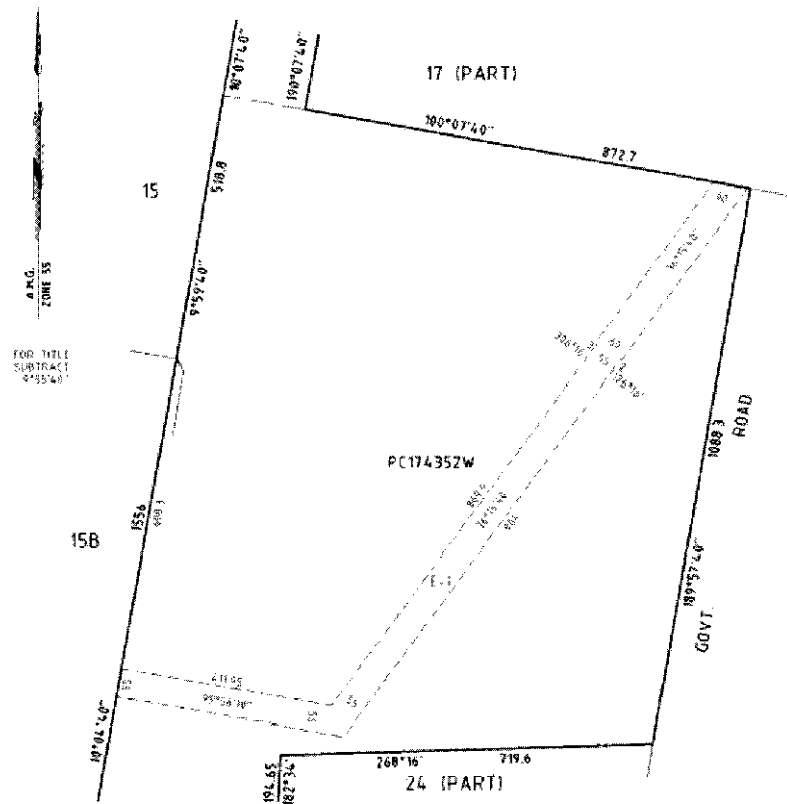
Vol 10022, Folio 450

Crown Allotments 17 (part) &
24 (part), SEC B, PC174352W

The Interest acquired over the land described above is an "easement" as defined by section 86(3) of the **Electricity Industry Act 2000** (Vic), exercisable by the Authority for the purposes of erecting or laying power lines (or both) and maintaining power lines.

Published with the authority of Basslink Pty Limited, ACN 090 996 231 of Level 12, 356 Collins Street, Melbourne, Victoria 3000.

The easement being acquired by Basslink Pty Limited is referred to on the attached plan as E-1 to E-2.



Dated 20 October 2003

For and of behalf of Basslink Pty Limited
MEG O'KEEFE
Legal Counsel
Basslink Pty Limited.

Land Acquisition and Compensation Act 1986

FORM 7

Notice of Acquisition

Compulsory Acquisition of Interest in Land

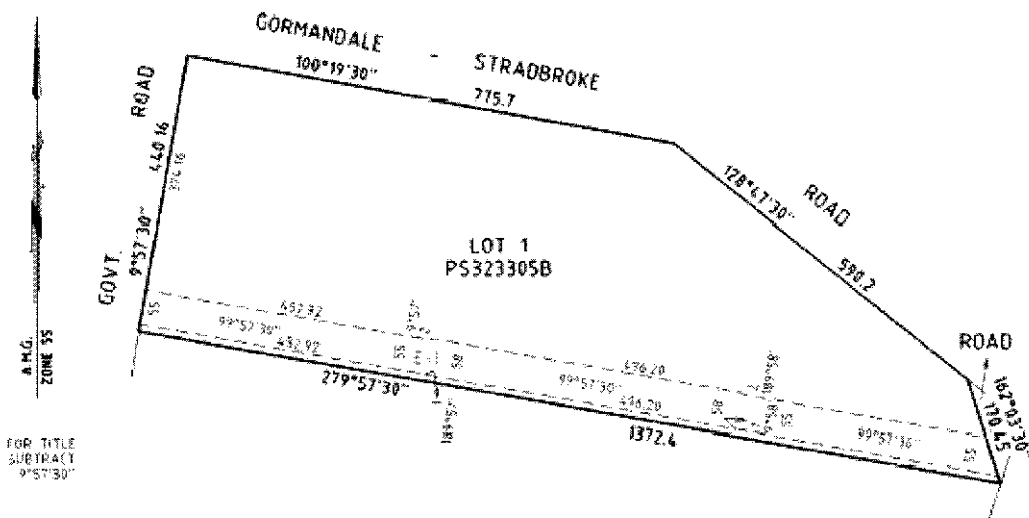
Basslink Pty Limited ("the Authority") declares that by this notice it acquires the following interest in the land described as

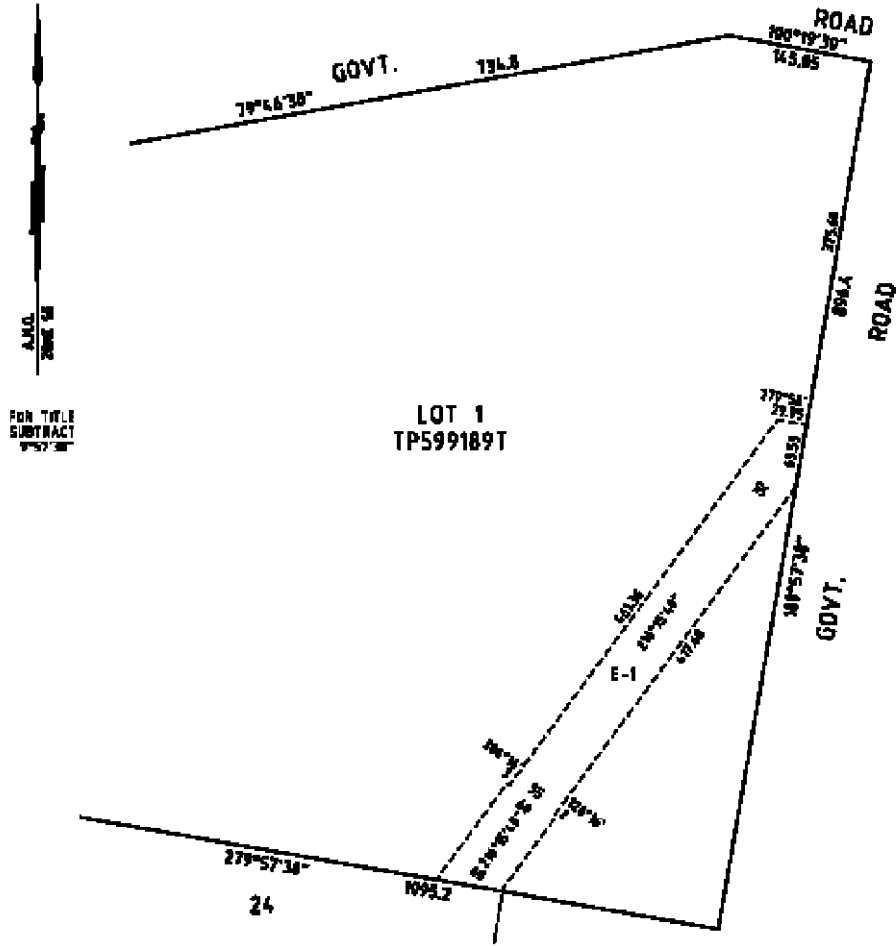
| | | |
|------------|----------------------|--|
| Stradbroke | Vol 10153, Folio 616 | Lot 1, PS323305B |
| Stradbroke | Vol 9664, Folio 335 | Lot 1 TP599189T (Formally known as Crown Allotment 17 (Part), SEC B) |

The Interest acquired over the land described above is an "easement" as defined by section 86(3) of the **Electricity Industry Act 2000** (Vic), exercisable by the Authority for the purposes of erecting or laying power lines (or both) and maintaining power lines.

Published with the authority of Basslink Pty Limited, ACN 090 996 231 of Level 12, 356 Collins Street, Melbourne, Victoria 3000.

The easement being acquired by Basslink Pty Limited is referred to on the attached plan(s) as E-1 to E-2.





Dated 20 October 2003

For and of behalf of Basslink Pty Limited
MEG O'KEEFE
Legal Counsel
Basslink Pty Limited.

Land Acquisition and Compensation Act 1986

FORM 7

Notice of Acquisition

Compulsory Acquisition of Interest in Land

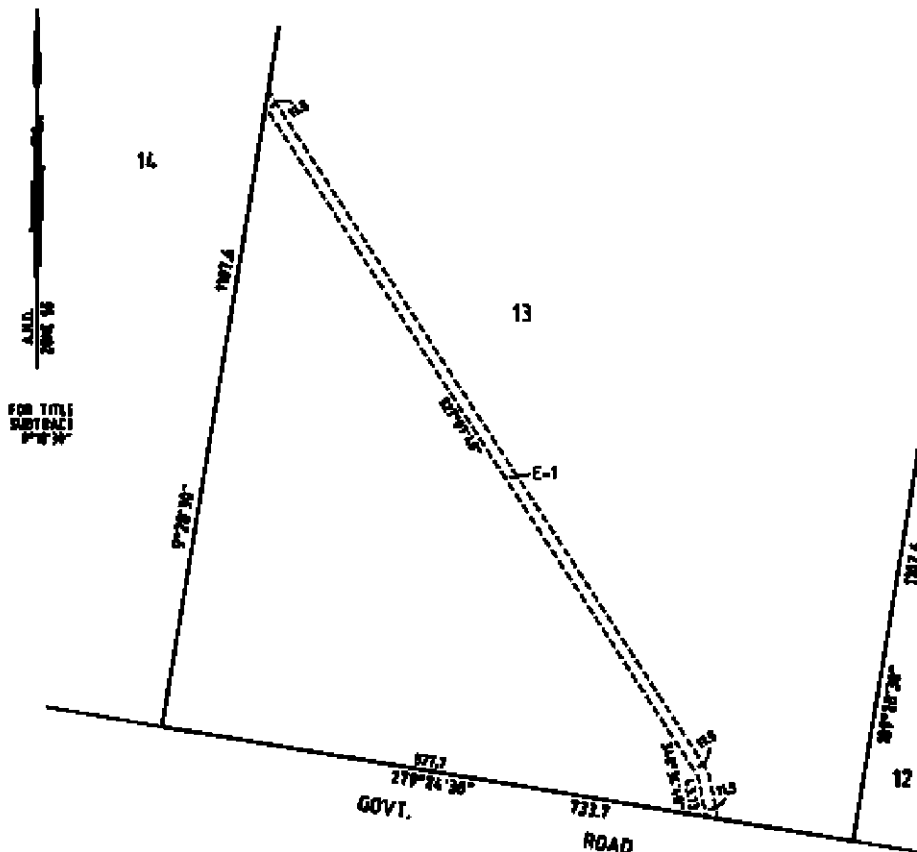
Basslink Pty Limited (“the Authority”) declares that by this notice it acquires the following interest in the land described as

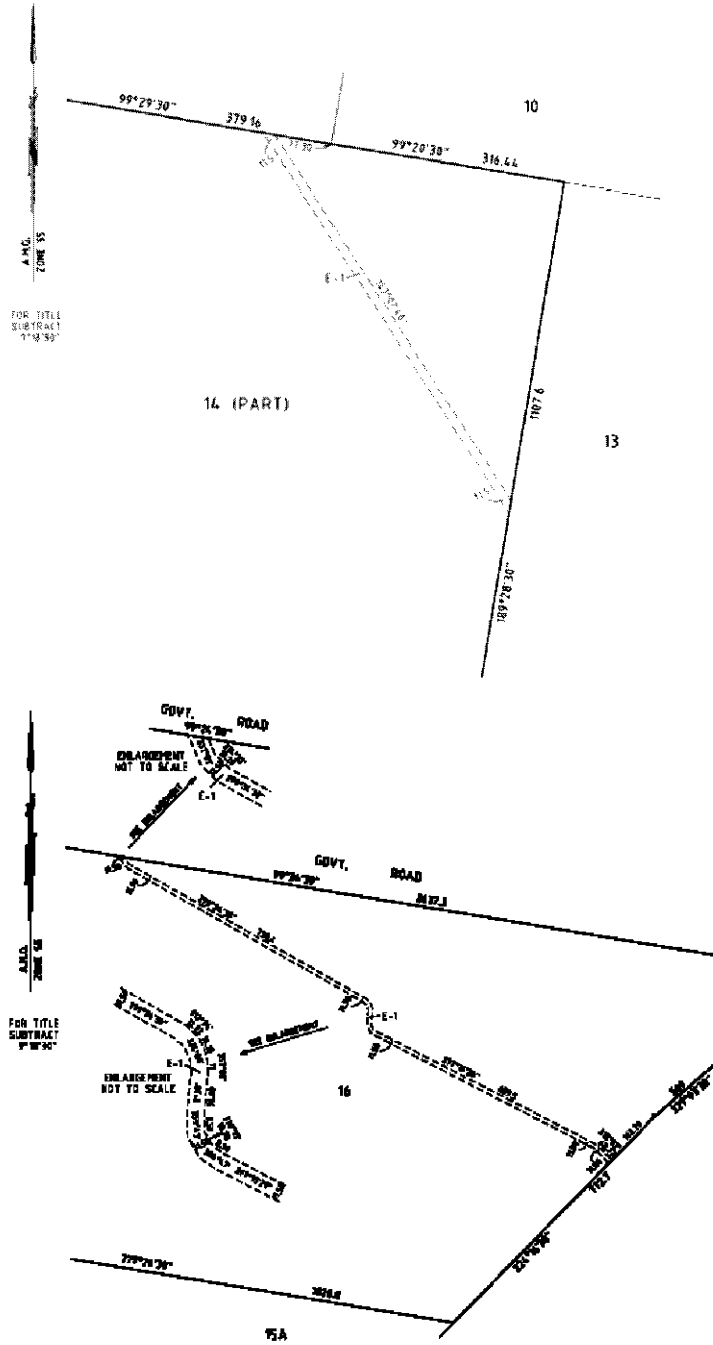
| | | |
|----------|--|--------------------------------------|
| Darriman | Vol 6614, Folio 745 & Vol 8334, Folio 534 | Crown Allotment 16, Section 6 |
| Darriman | Vol 9503, Folio 276 | Crown Allotment 13, Section 3 |
| Darriman | Vol 8334, Folio 529 | Crown Allotment 14 (Part), Section 3 |

The Interest acquired over the land described above is an “easement” as defined by section 86(3) of the **Electricity Industry Act 2000** (Vic), exercisable by the Authority for the purposes of erecting or laying power lines (or both) and maintaining power lines.

Published with the authority of Basslink Pty Limited, ACN 090 996 231 of Level 12, 356 Collins Street, Melbourne Victoria 3000.

The easement being acquired by Basslink Pty Limited is referred to on the attached plan(s) as E-1 to E-2.





Dated 20 October 2003

For and of behalf of Basslink Pty Limited
MEG O'KEEFE
Legal Counsel
Basslink Pty Limited.

Land Acquisition and Compensation Act 1986

FORM 7

Notice of Acquisition

Compulsory Acquisition of Interest in Land

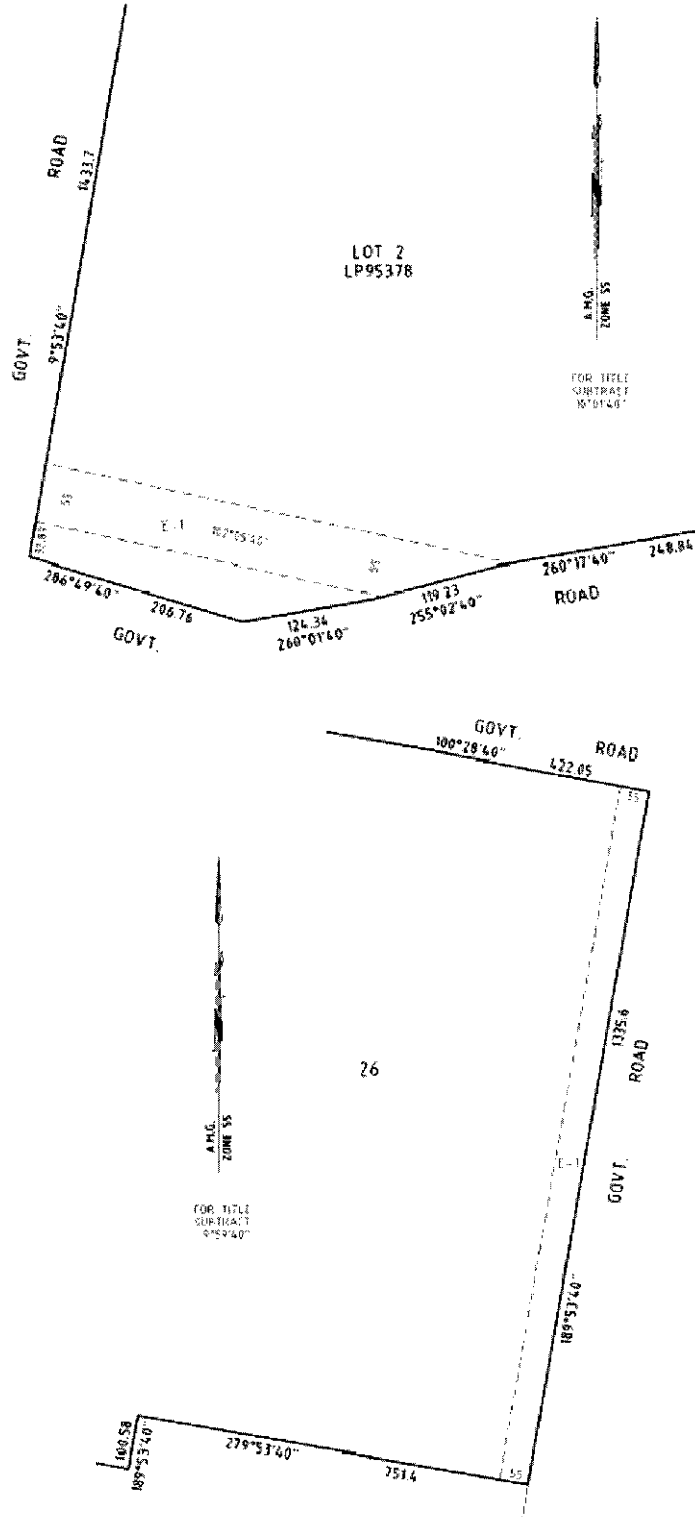
Basslink Pty Limited (“the Authority”) declares that by this notice it acquires the following interest in the land described as

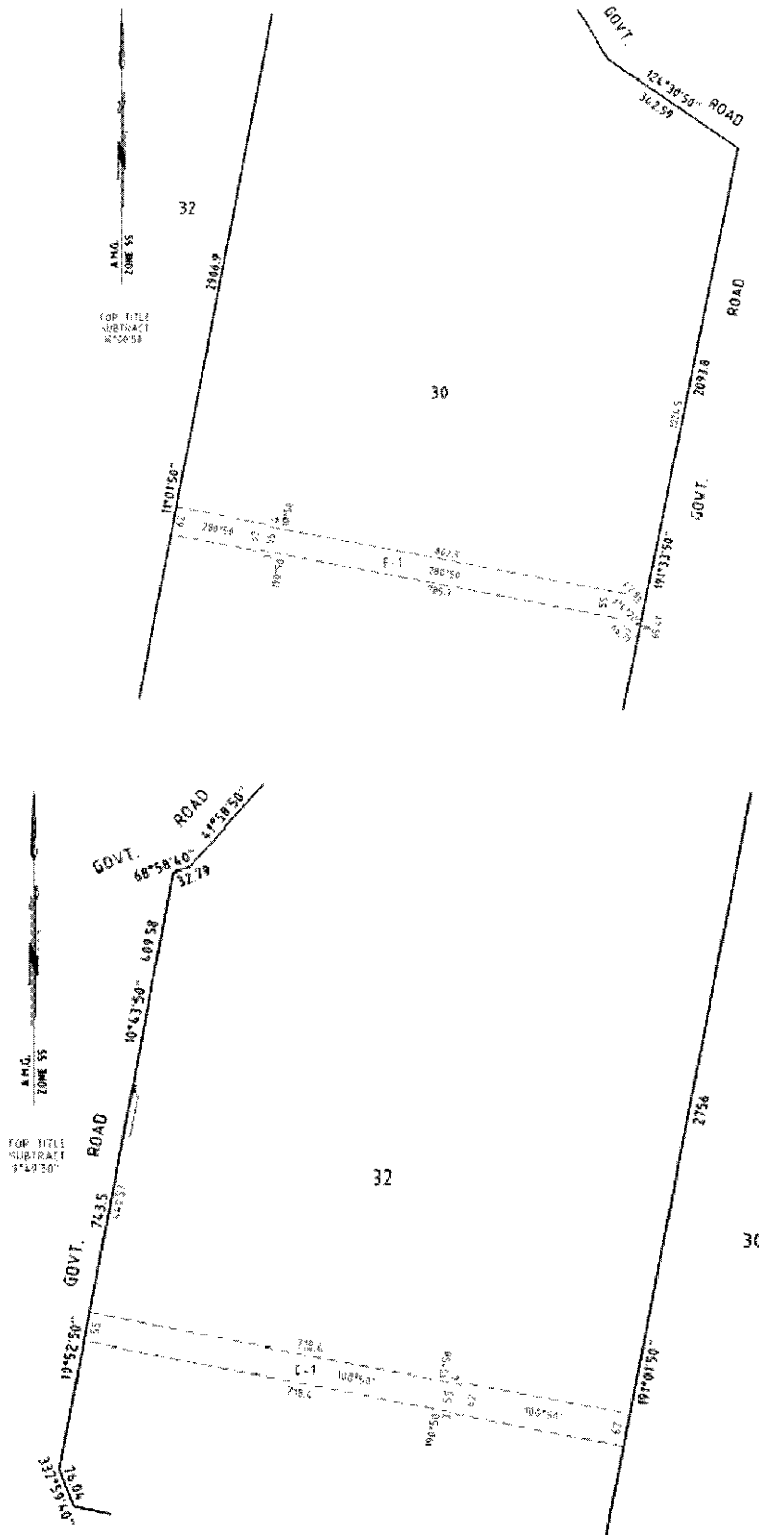
| | | |
|-------------------------|----------------------|---|
| Stradbroke | Vol 8949, Folio 456 | Crown Allotment 19B, Section A, Lot 2, LP95378 |
| Stradbroke | Vol 6671, Folio 112 | Crown Allotment 26, Section A |
| Stradbroke | Vol 6018, Folio 459 | Crown Allotment 30, Section A |
| Stradbroke | Vol 7413, Folio 465 | Crown Allotments 32 & 32A Section A |
| Stradbroke | Vol 10344, Folio 849 | Lot 1, PS 340419N |
| Stradbroke | Vol 10153, Folio 840 | Lot 1, PS323820J |
| Willung & Stradbroke | Vol 5059, Folio 726 | Crown Allotments 1J & 1K (Willung) & Crown Allotment 4B, Section B (Stradbroke) |
| Willung | Vol 8269, Folio 368 | Crown Allotment 12L, |
| Willung | Vol 8780, Folio 552 | Crown Allotment 12G |
| Rosedale | Vol 4148, Folio 505 | Crown Allotment 311 |
| Rosedale | Vol 3888, Folio 568 | Crown Allotments 18B & 18E, S Section A |
| Tong Bong | Vol 6566, Folio 163 | Lots 1 & 2 on TP 433469R (formally known as Crown Allotments 50B (PT) & 51A) |
| Tong Bong | Vol 5995, Folio 986 | Crown Allotment 50A |
| Tong Bong | Vol 10407, Folio 859 | Crown Allotment 50D |
| Tong Bong | Vol 5866, Folio 039 | Crown Allotment 50 |
| Tong Bong | Vol 8560, Folio 727 | Crown Allotment 5C |
| Tong Bong | Vol 8876, Folio 234 | Crown Allotment 55 |
| Tong Bong | Vol 5316, Fol 036 | Crown Allotment 56 |
| Loy Yang | Vol 2937, Folio 348 | Crown Allotment 12H |
| Loy Yang | Vol 7697, Folio 131 | Crown Allotment 16F, Section A |
| Loy Yang | Vol 4138, Folio 532 | Crown Allotment 16E, Section A |

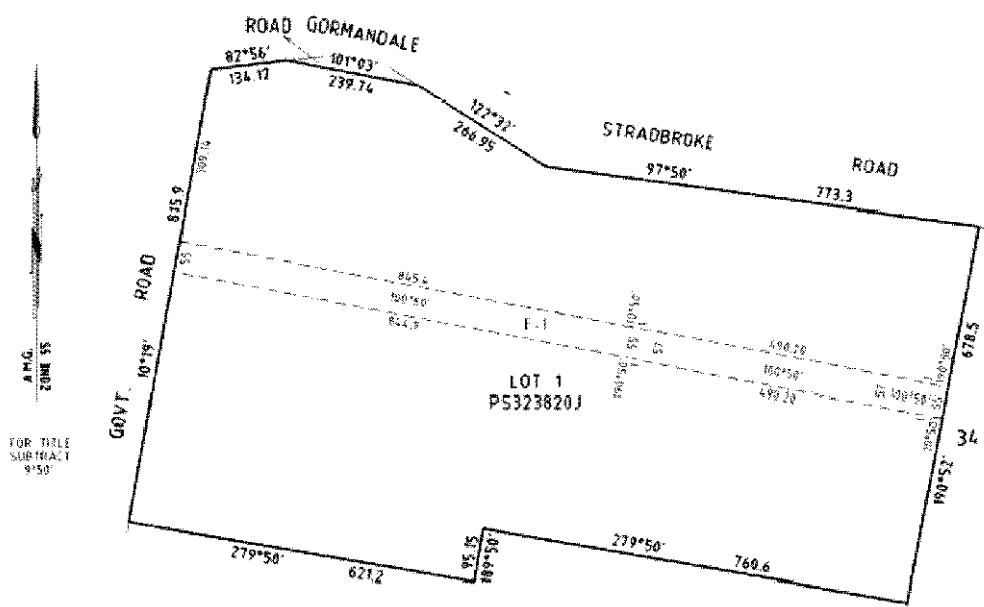
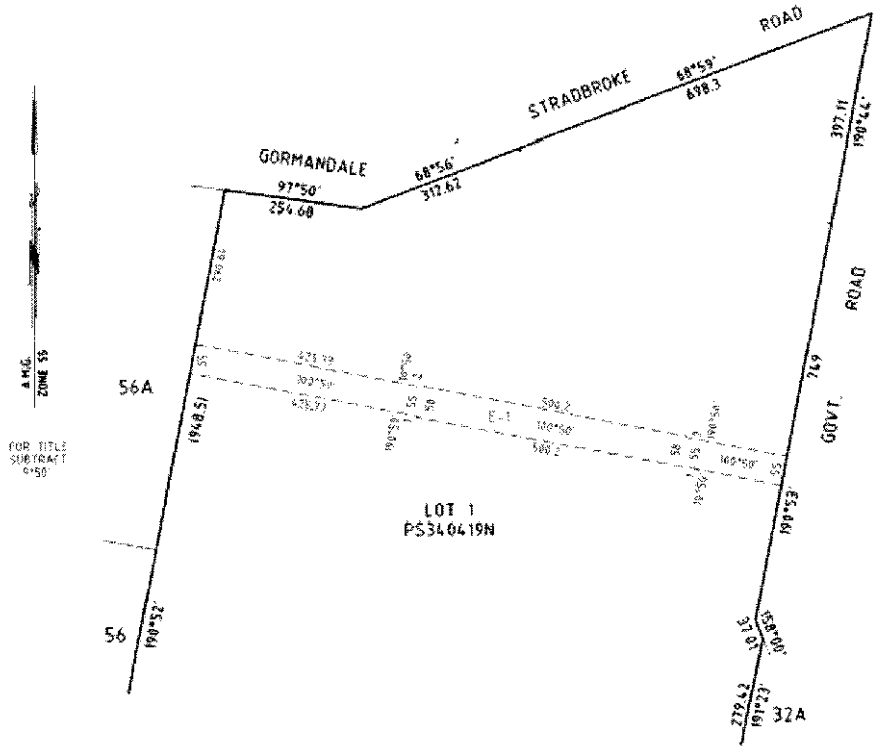
The Interest acquired over the land described above is an “easement” as defined by section 86(3) of the **Electricity Industry Act 2000** (Vic), exercisable by the Authority for the purposes of erecting or laying power lines (or both) and maintaining power lines.

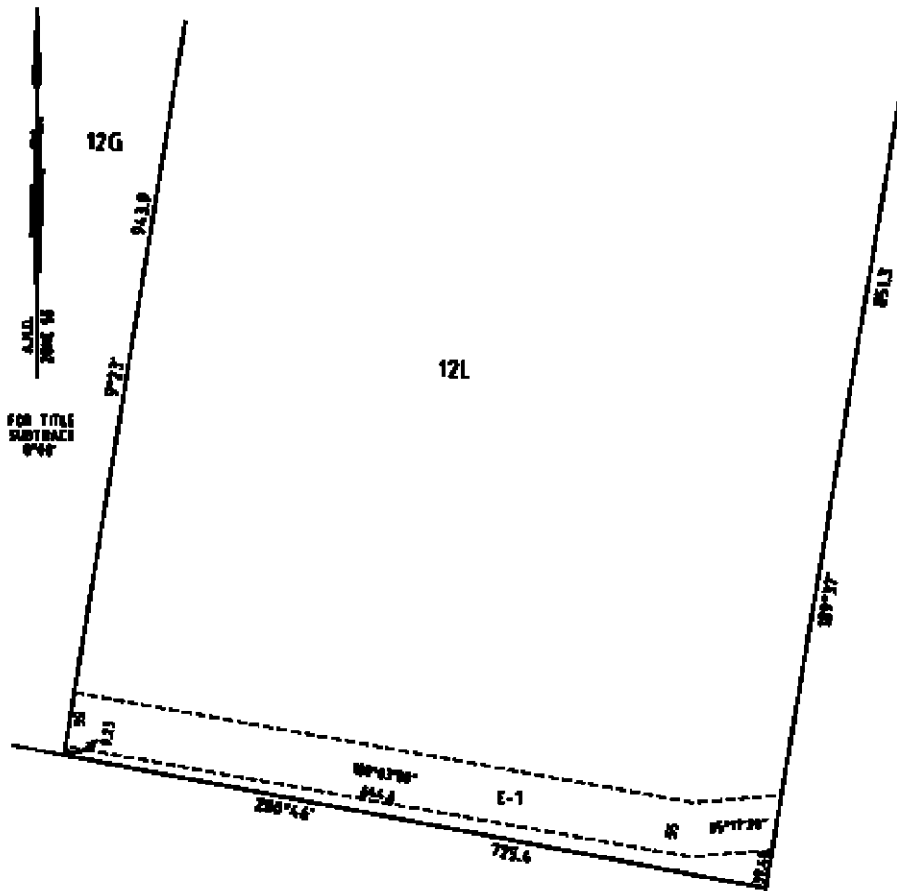
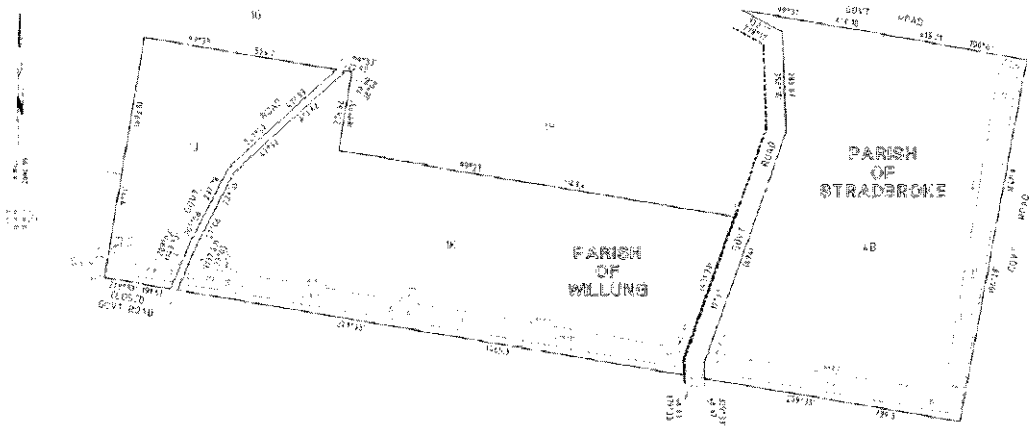
Published with the authority of Basslink Pty Limited. ACN 090 996 231 of Level 12, 356 Collins Street, Melbourne, Victoria 3000.

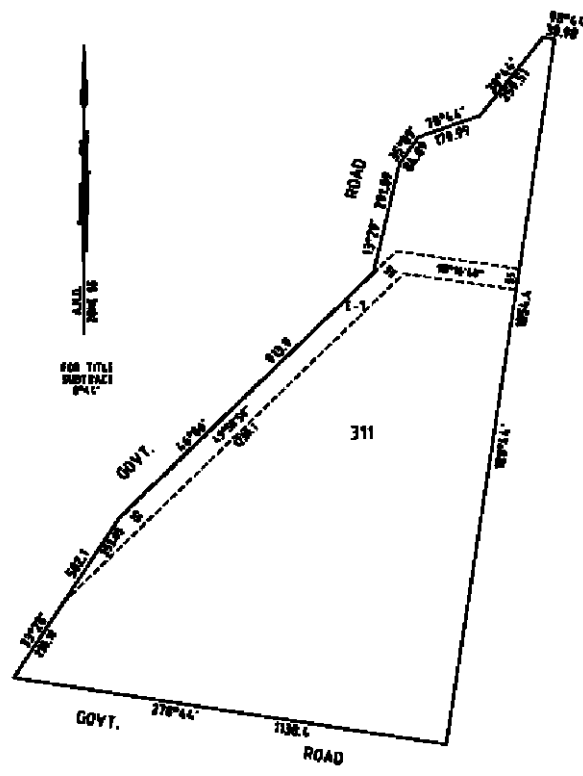
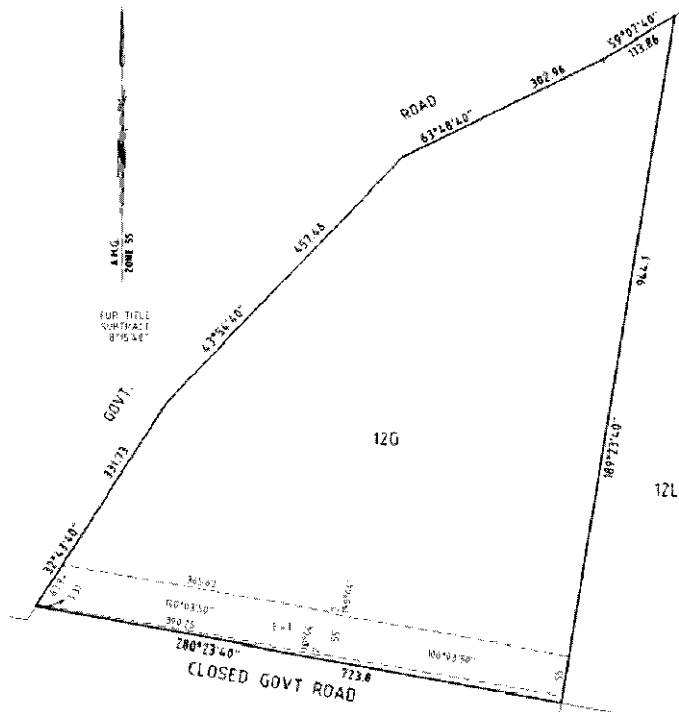
The easement being acquired by Basslink Pty Limited is referred to on the attached plan(s) as E-1 to E-2.

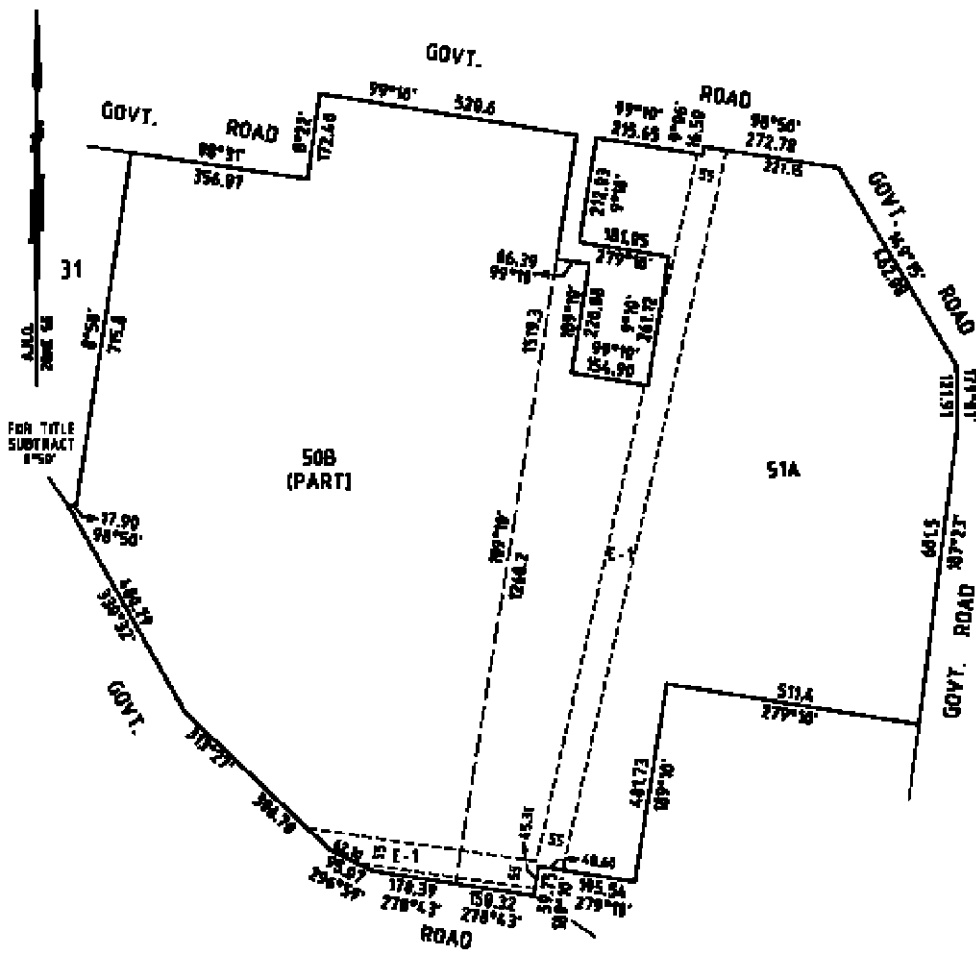
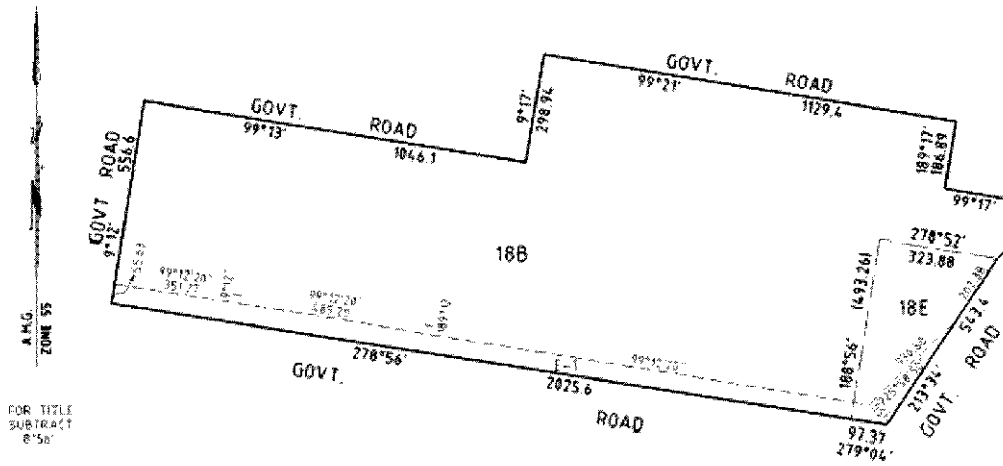


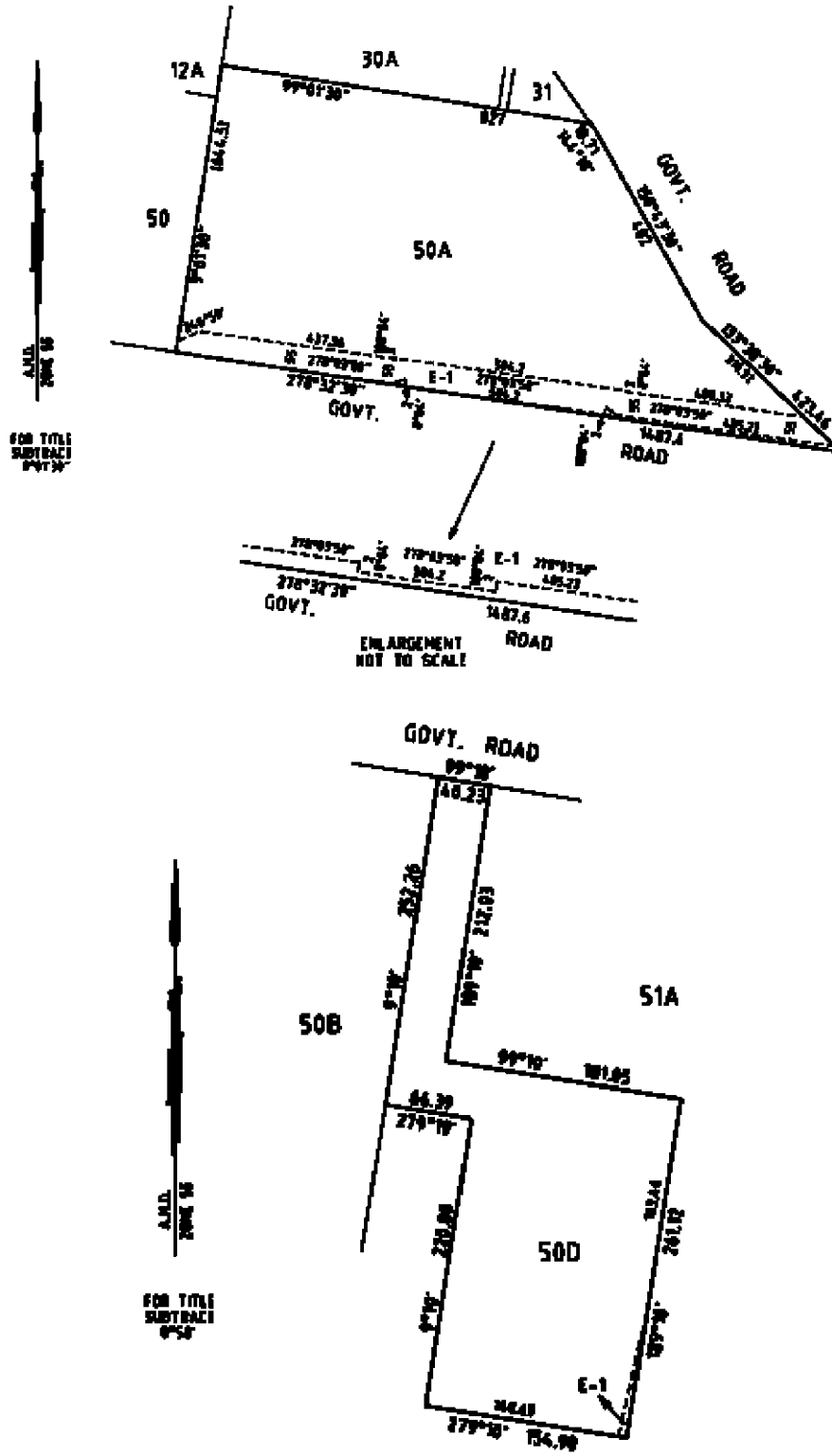


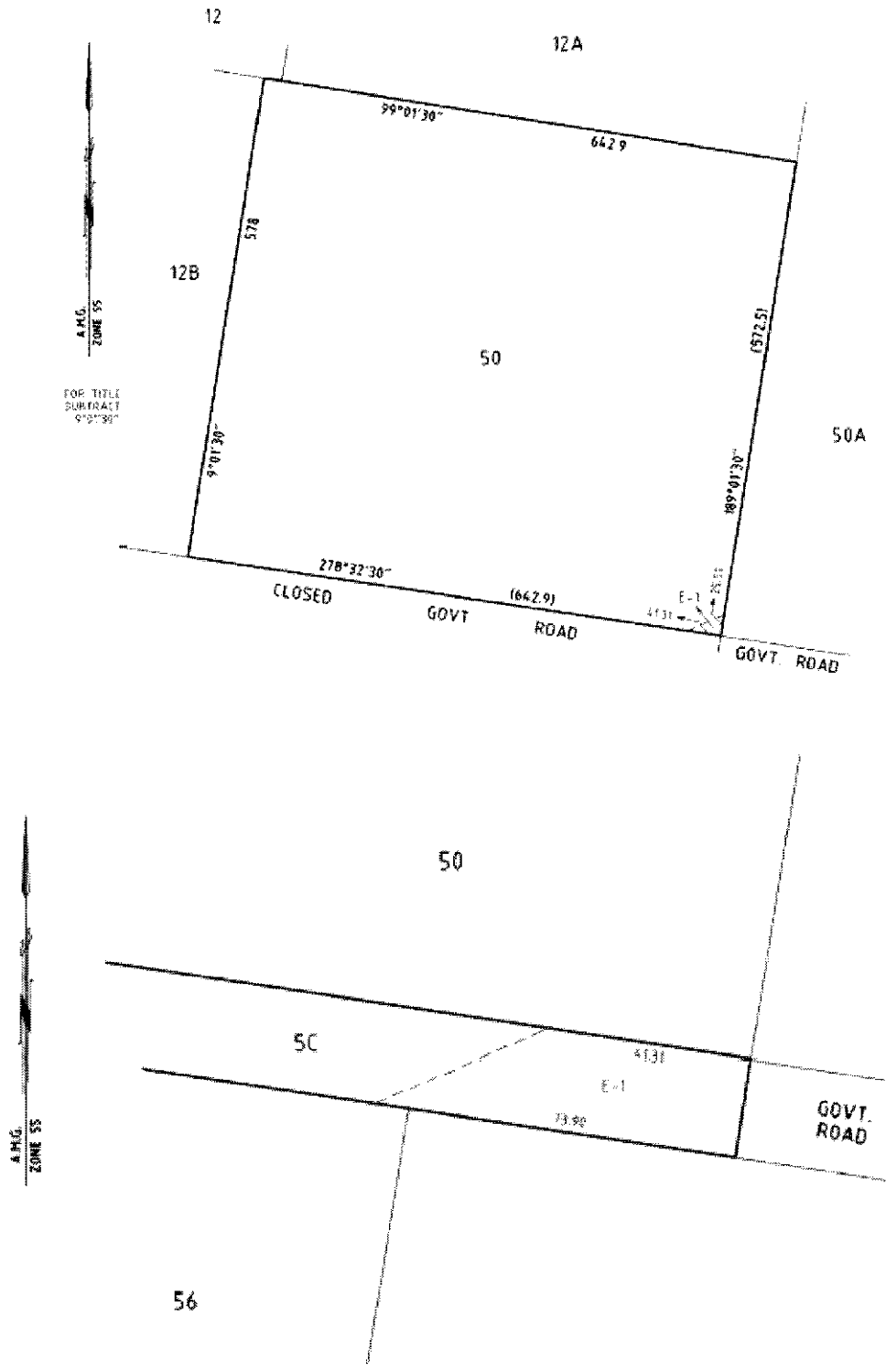


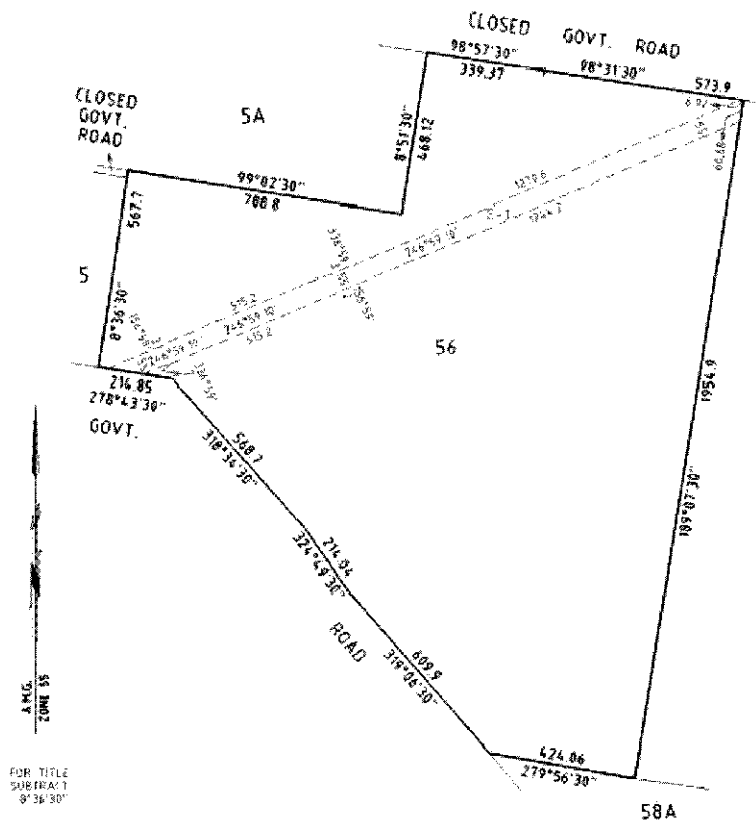
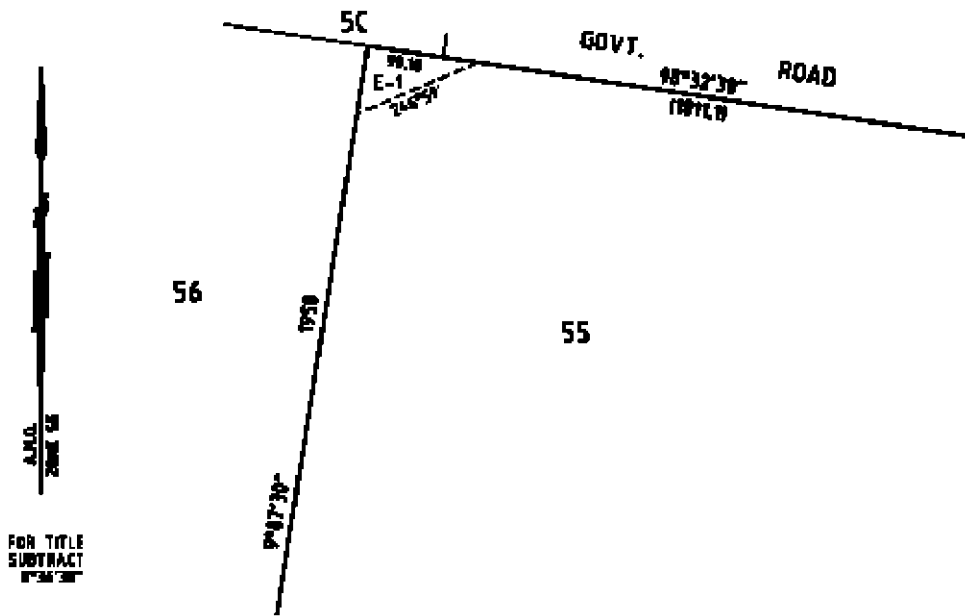


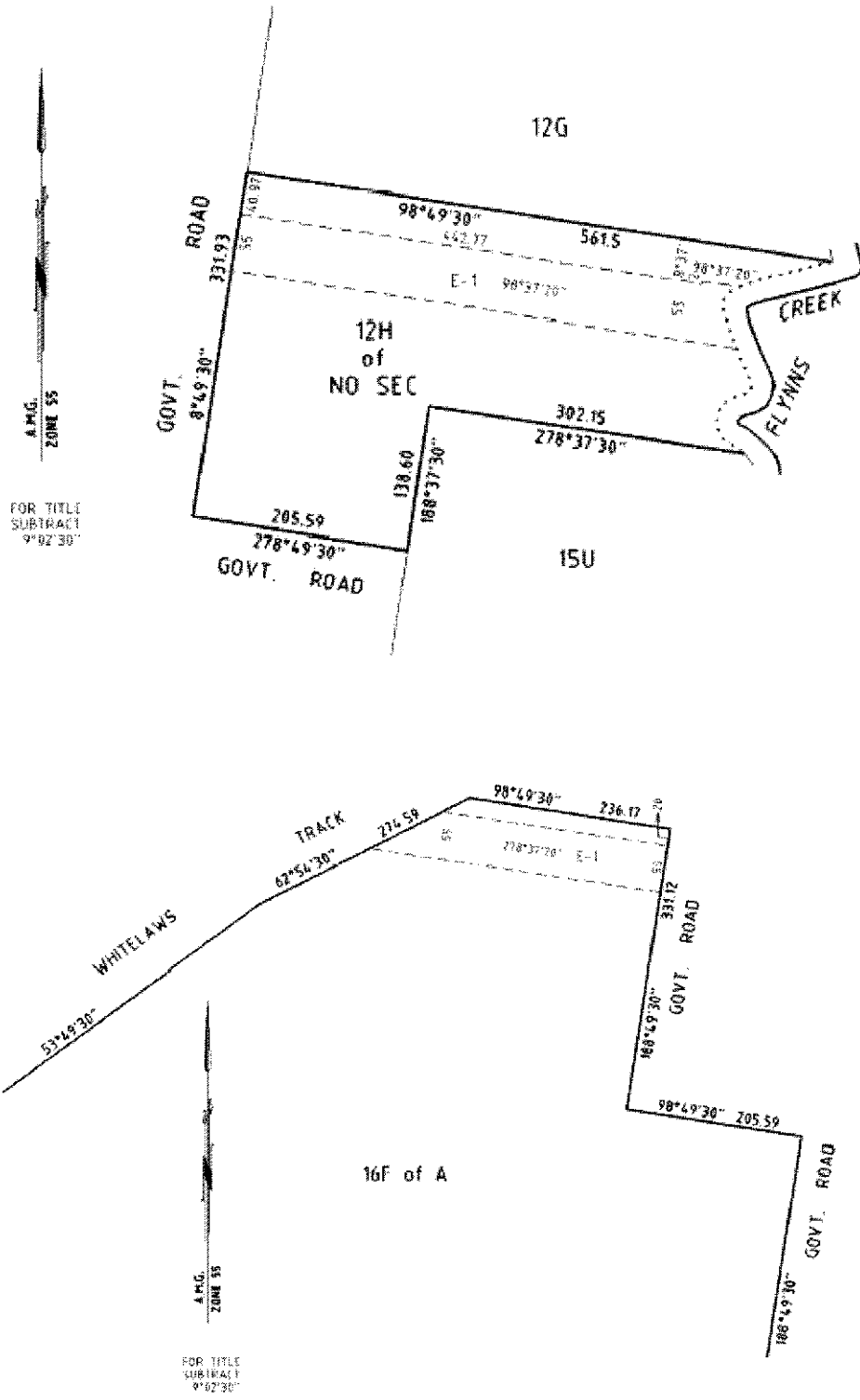


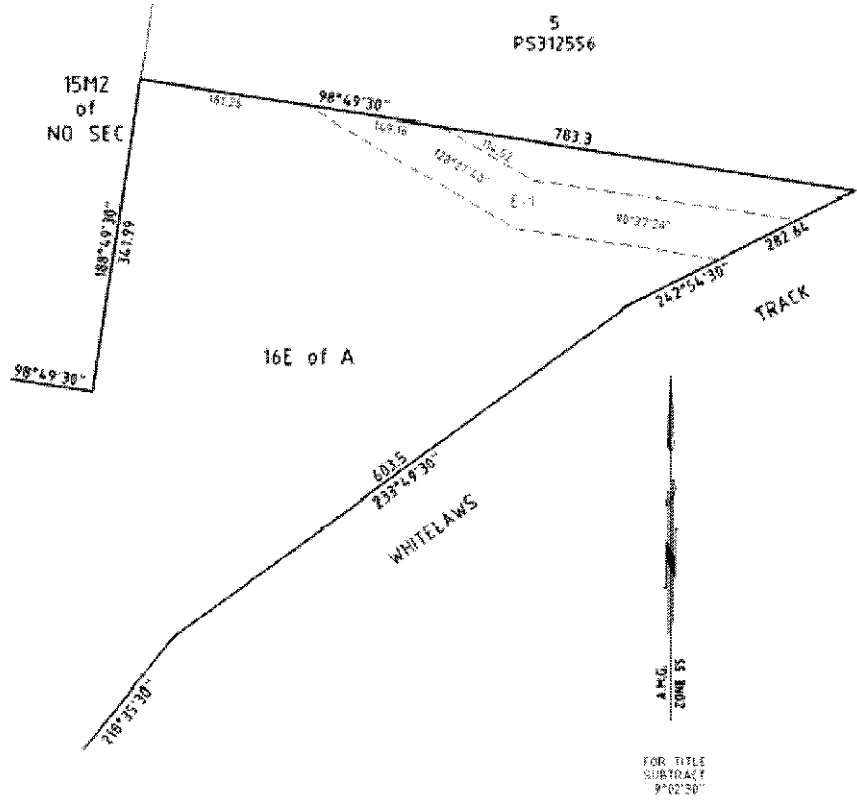












Dated 20 October 2003

For and of behalf of Basslink Pty Limited
MEG O'KEEFE
Legal Counsel
Basslink Pty Limited.

craftsmanpress



The *Victoria Government Gazette* is published by The Craftsman Press Pty Ltd with the authority of the Government Printer for the State of Victoria

© State of Victoria 2003

This publication is copyright. No part may be reproduced by any process except in accordance with the provisions of the Copyright Act.

Address all enquiries to the Government Printer for the State of Victoria
Level 2 1 Macarthur Street
Melbourne 3002
Victoria Australia

How To Order

| | | |
|---|--------------------------------|---|
|  | Mail Order | Craftsman Press Pty Ltd 125 Highbury Road Burwood 3125 DX – 32510 Burwood |
|  | Telephone | (03) 9926 1233 |
|  | Fax | (03) 9926 1292 |
| | email | gazette@craftpress.com.au |
|  | Retail & Mail Sales | Information Victoria 356 Collins Street Melbourne 3000 |
|  | Telephone | 1300 366 356 |
|  | Fax | (03) 9603 9920 |
|  | Retail Sales | City Graphics Level 1 520 Bourke Street Melbourne 3000 |
|  | Telephone | (03) 9600 0977 |
|  | Fax | (03) 9600 0989 |

Price Code B