



# Victoria Government Gazette

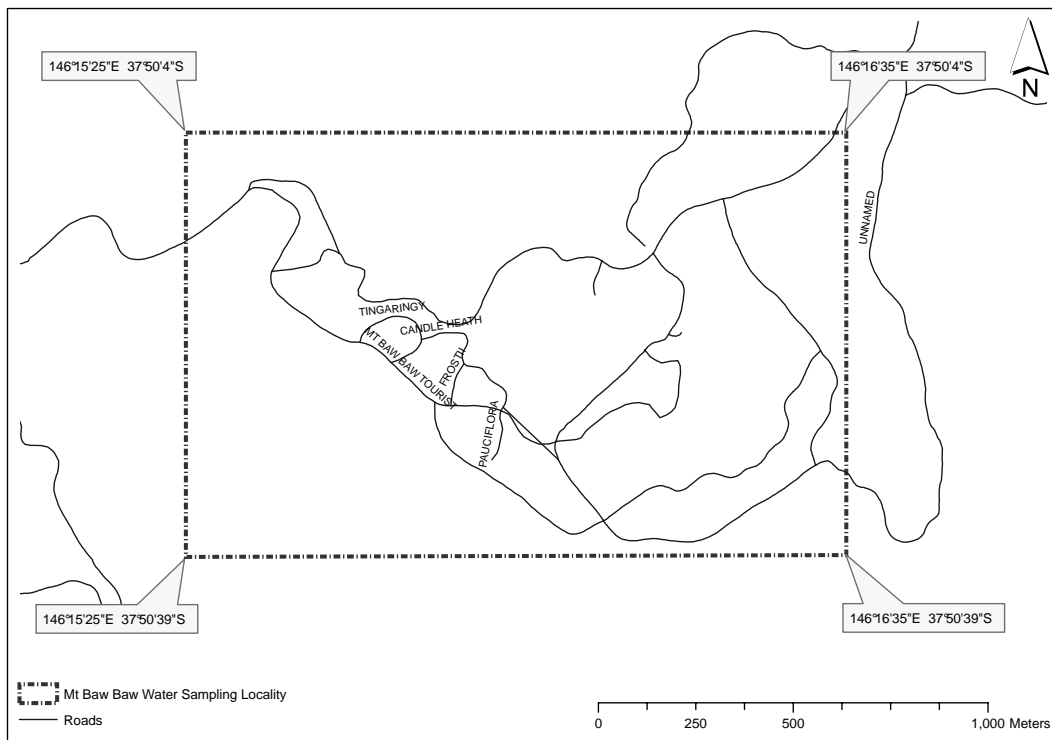
No. S 158 Friday 16 June 2006  
By Authority, Victorian Government Printer

## SAFE DRINKING WATER REGULATIONS 2005

### Specification of an Area to be a Water Sampling Locality

I, Patricia Faulkner, Secretary to the Department of Human Services, under regulation 4 of the **Safe Drinking Water Regulations 2005** ("the Regulations"), specify the following area that is supplied with drinking water by Mount Baw Baw Alpine Resort Management Board to be a water sampling locality for the purposes of the Regulations.

WATER SAMPLING LOCALITY NAME: MOUNT BAW BAW



This specification will take effect from 1 July 2006.

P. M. FAULKNER  
Secretary

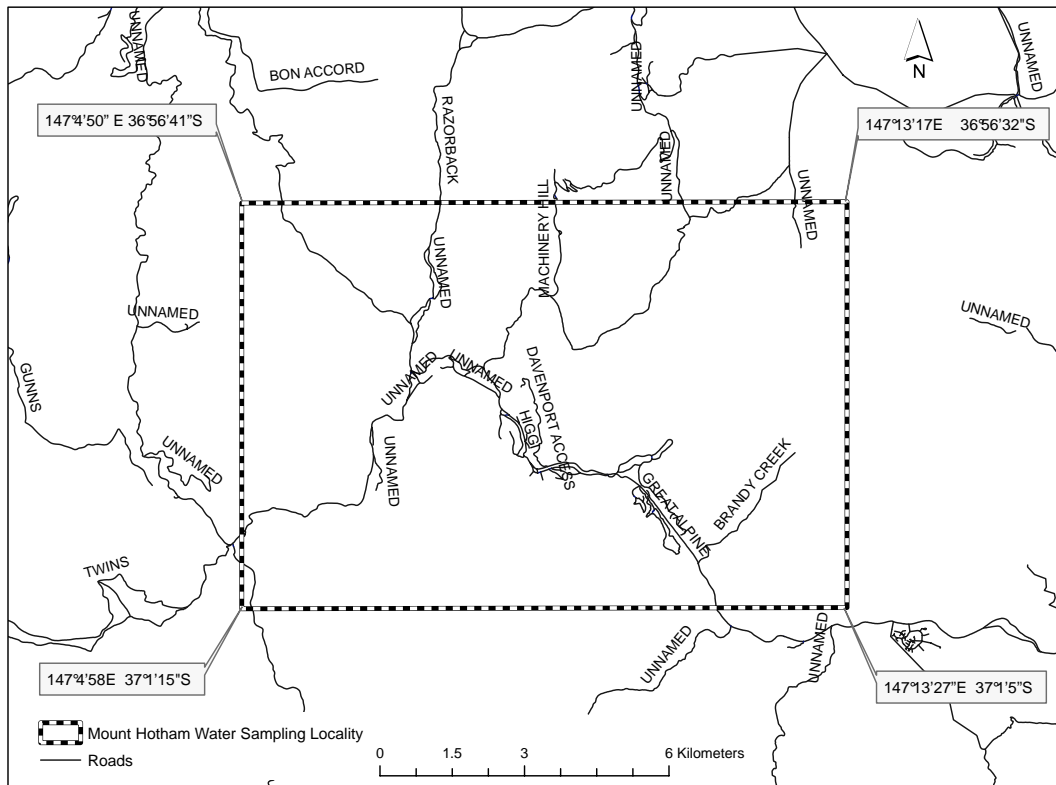
**SPECIAL**

SAFE DRINKING WATER REGULATIONS 2005

Specification of an Area to be a Water Sampling Locality

I, Patricia Faulkner, Secretary to the Department of Human Services, under regulation 4 of the **Safe Drinking Water Regulations 2005** (“the Regulations”), specify the following area that is supplied with drinking water by Mount Hotham Alpine Resort Management Board to be a water sampling locality for the purposes of the Regulations.

WATER SAMPLING LOCALITY NAME: MOUNT HOTHAM



This specification will take effect from 1 July 2006.

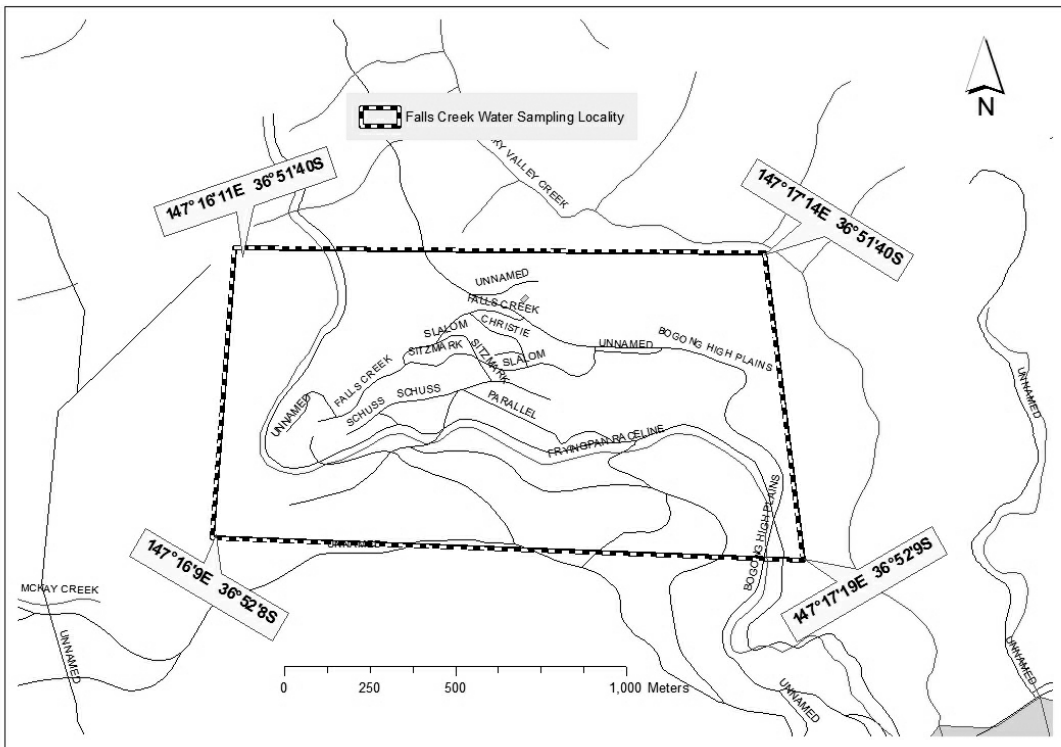
P. M. FAULKNER  
Secretary

SAFE DRINKING WATER REGULATIONS 2005

Specification of an Area to be a Water Sampling Locality

I, Patricia Faulkner, Secretary to the Department of Human Services, under regulation 4 of the **Safe Drinking Water Regulations 2005** (“the Regulations”), specify the following area that is supplied with drinking water by Falls Creek Alpine Resort Management Board to be a water sampling locality for the purposes of the Regulations.

WATER SAMPLING LOCALITY NAME: FALLS CREEK



This specification will take effect from 1 July 2006.

P. M. FAULKNER  
Secretary

SAFE DRINKING WATER REGULATIONS 2005

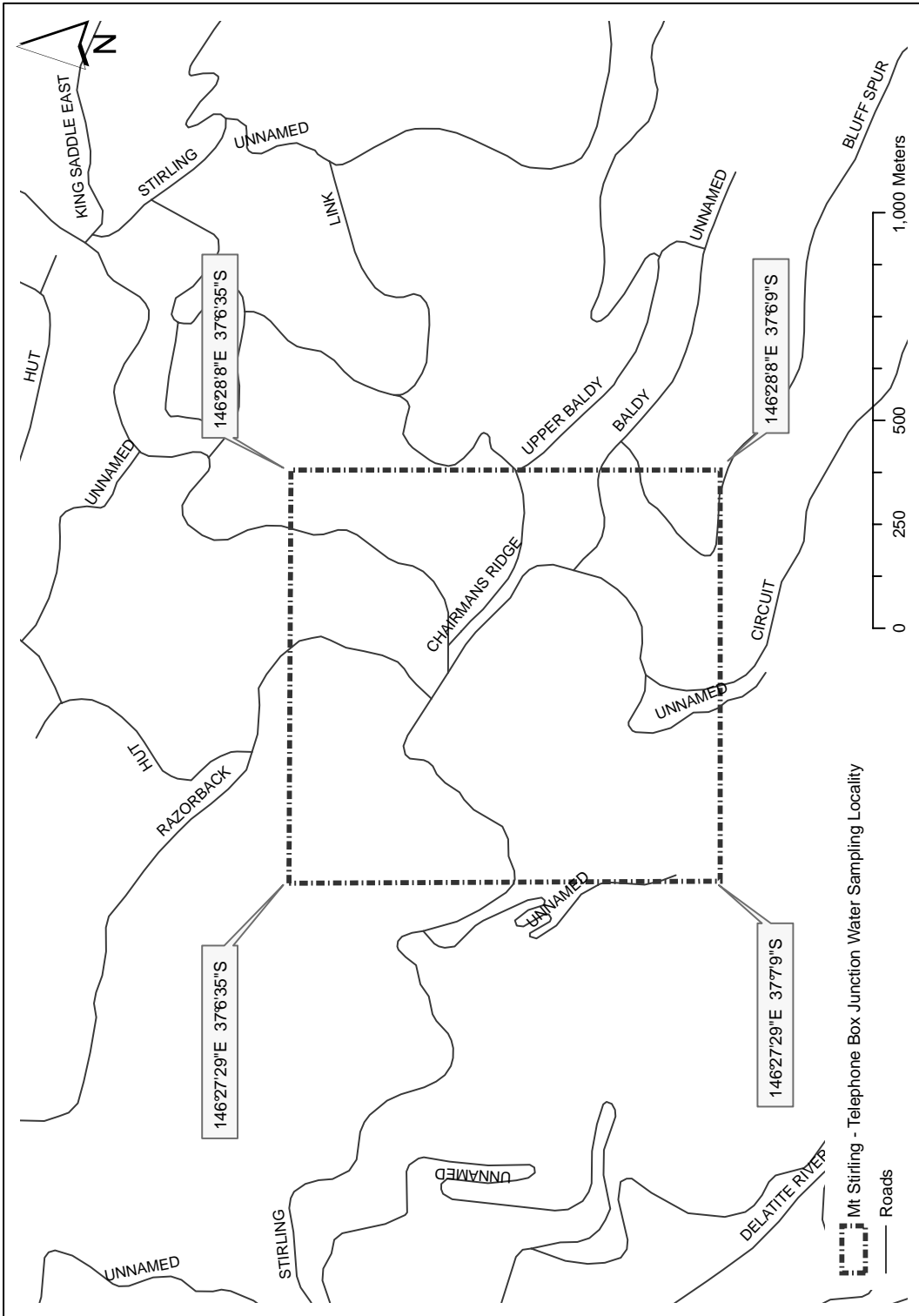
Specification of Areas to be Water Sampling Localities

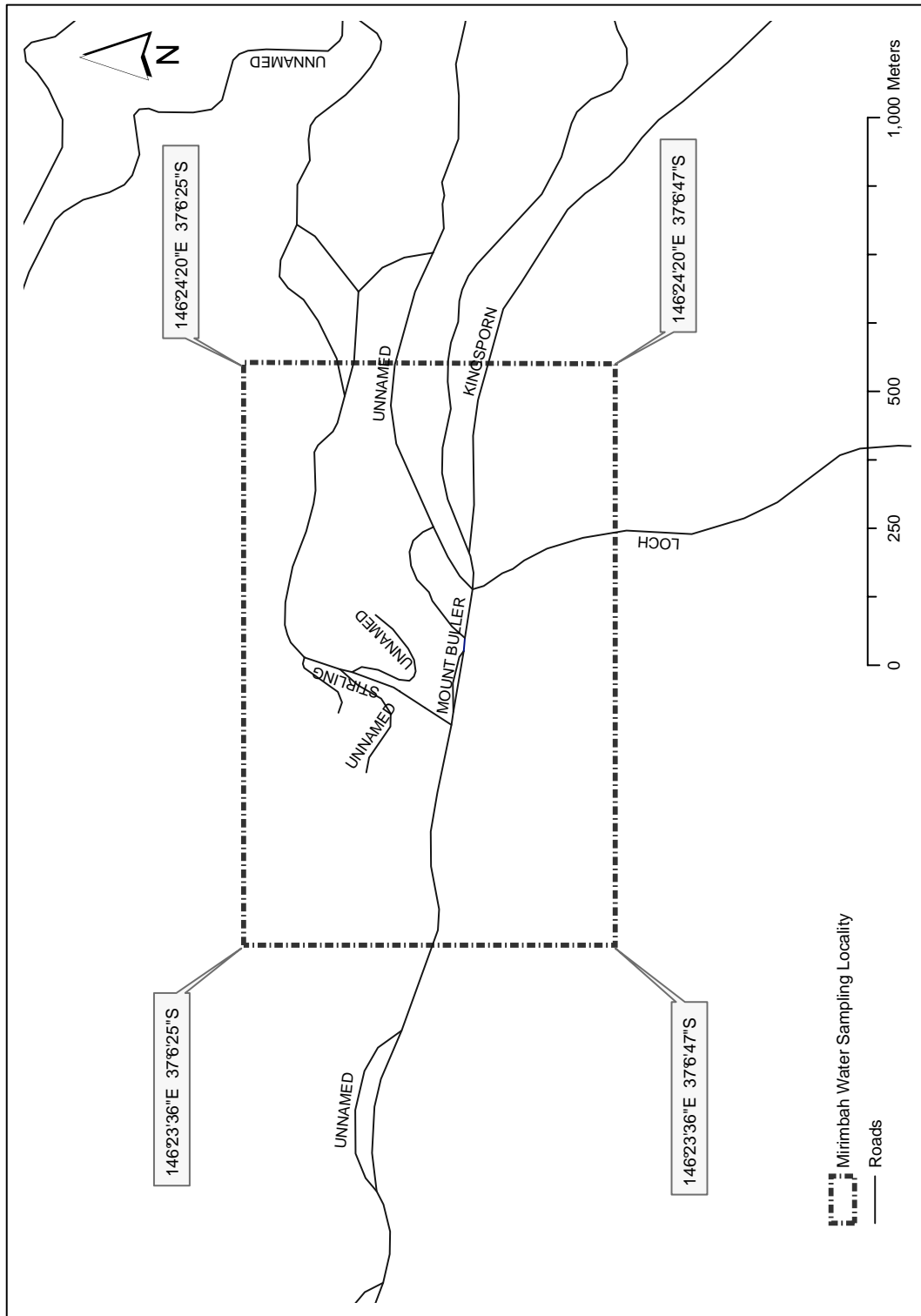
I, Patricia Faulkner, Secretary to the Department of Human Services, under regulation 4 of the **Safe Drinking Water Regulations 2005** (“the Regulations”), specify the following areas that are supplied with drinking water by the Mount Buller and Mount Stirling Alpine Resort Management Board to be water sampling localities for the purposes of the Regulations.

This specification will take effect from 1 July 2006.

P. M. FAULKNER  
Secretary

---





# MT BULLER HIGH LEVEL RETICULATION

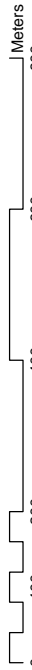
## Legend

— Roads

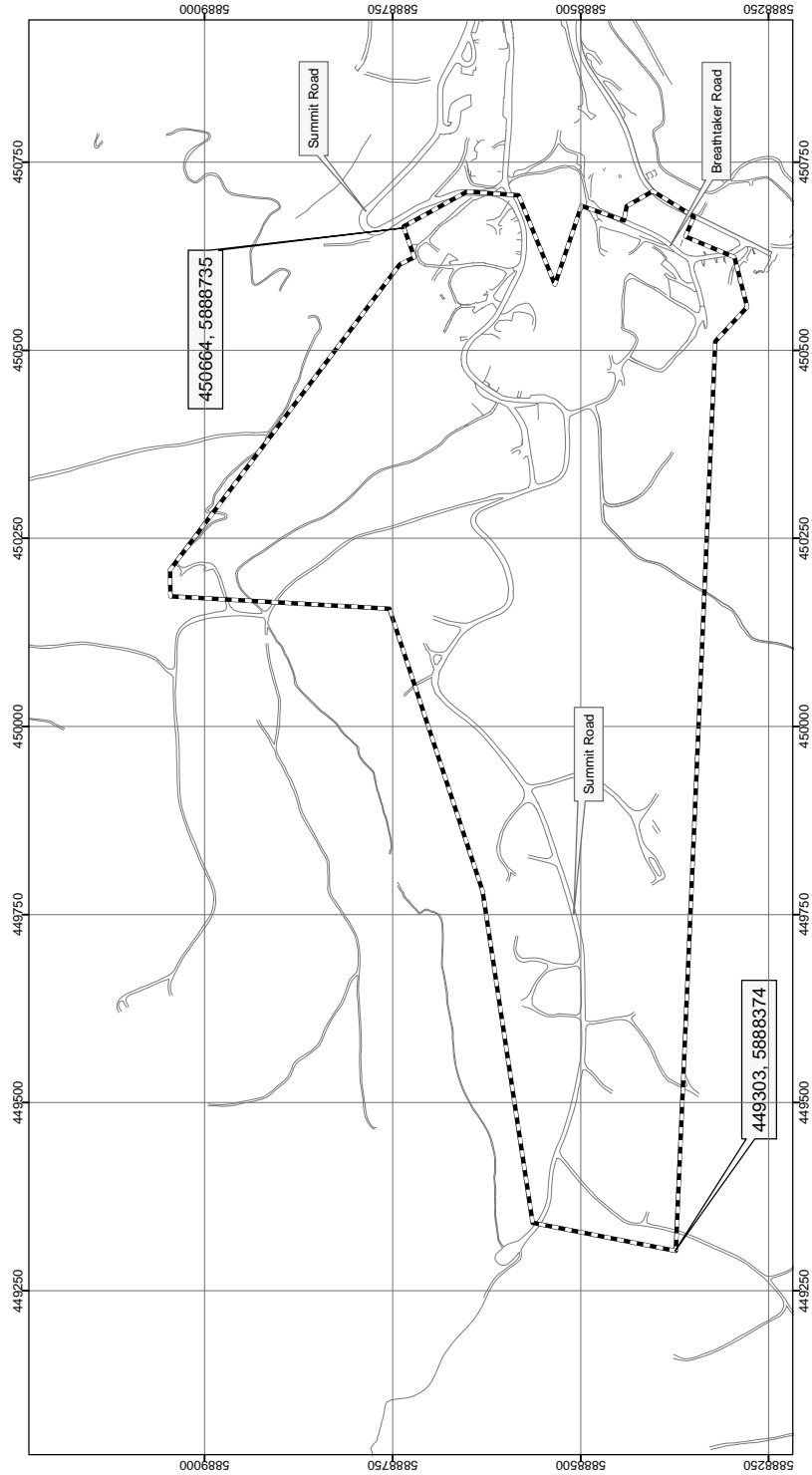
--- Water Sampling

--- Locality Boundary

1:5,000



Coordinates to AMG 66 Zone 55



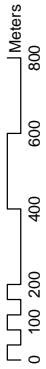
CORRECT AS AT 4 MAY 2006

# MT BULLER ALPINE VILLAGE - LOW LEVEL RETICULATION

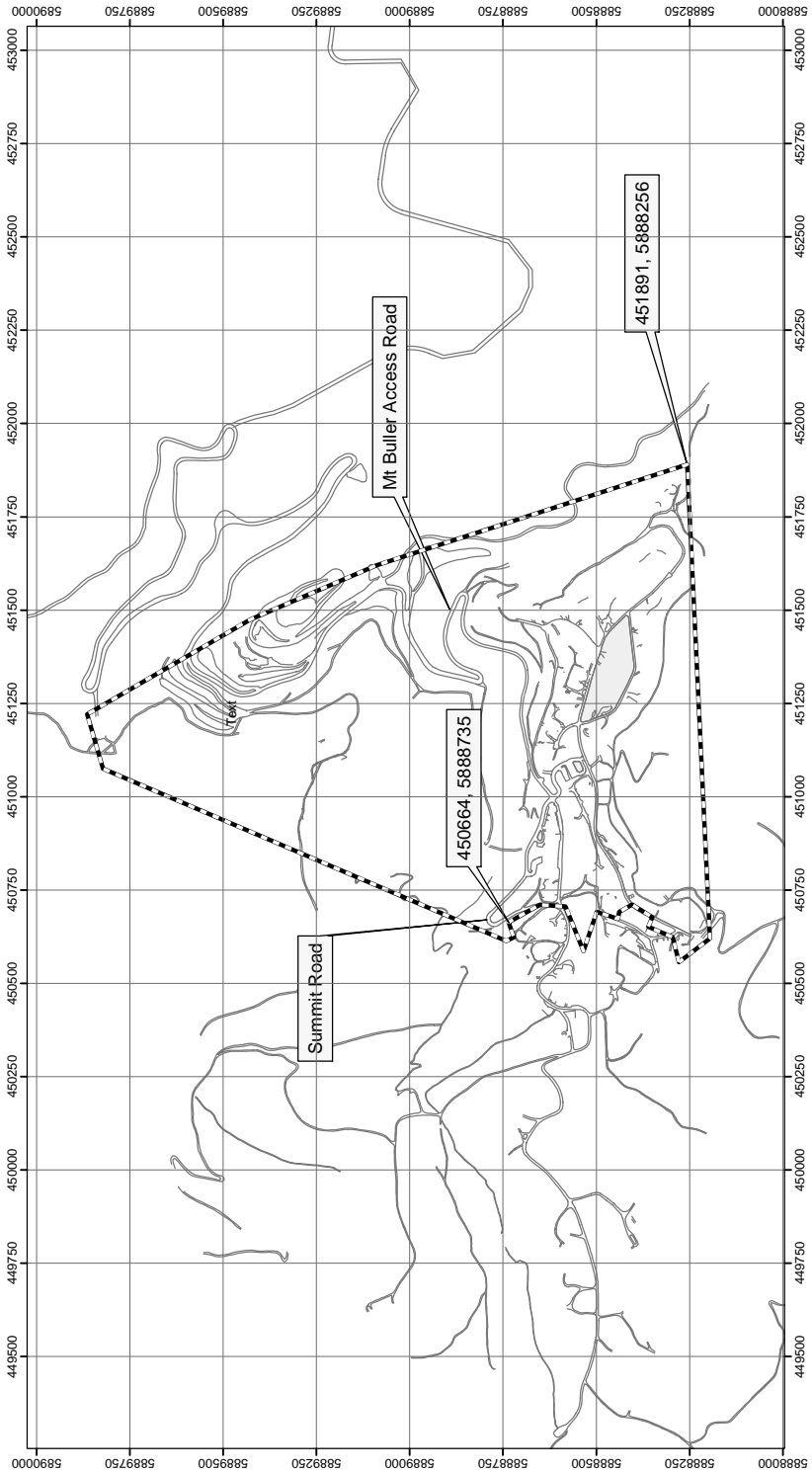
## Legend

- Roads
- Water Sampling
- - - Locality Boundary

1:10,000



Coordinates to AMG 66 Zone 55



CORRECT AS AT 15 DEC 2005



This page was left blank intentionally

This page was left blank intentionally

This page was left blank intentionally

**craftsmanpress**

The *Victoria Government Gazette* is published by The Craftsman Press Pty Ltd with the authority of the Government Printer for the State of Victoria

© State of Victoria 2006

This publication is copyright. No part may be reproduced by any process except in accordance with the provisions of the Copyright Act.

Address all enquiries to the Government Printer for the State of Victoria  
Level 2 1 Macarthur Street  
Melbourne 3002  
Victoria Australia

**How To Order****Mail Order****Victoria Government Gazette**

Level 1 520 Bourke Street  
Melbourne 3000

DX – 106 Melbourne

**Telephone**

(03) 9642 5808

**Fax**

(03) 9600 0478

**email**

gazette@craftpress.com.au

**Retail & Mail Sales****Victoria Government Gazette**

Level 1 520 Bourke Street  
Melbourne 3000

**Telephone**

(03) 9642 5808

**Fax**

(03) 9600 0478

**Retail Sales****Information Victoria**

356 Collins Street  
Melbourne 3000

**Telephone**

1300 366 356

**Fax**

(03) 9603 9920

**Price Code A**