



# Victoria Government Gazette

No. S 151 Tuesday 10 June 2008  
By Authority, Victorian Government Printer

## Road Management Act 2004

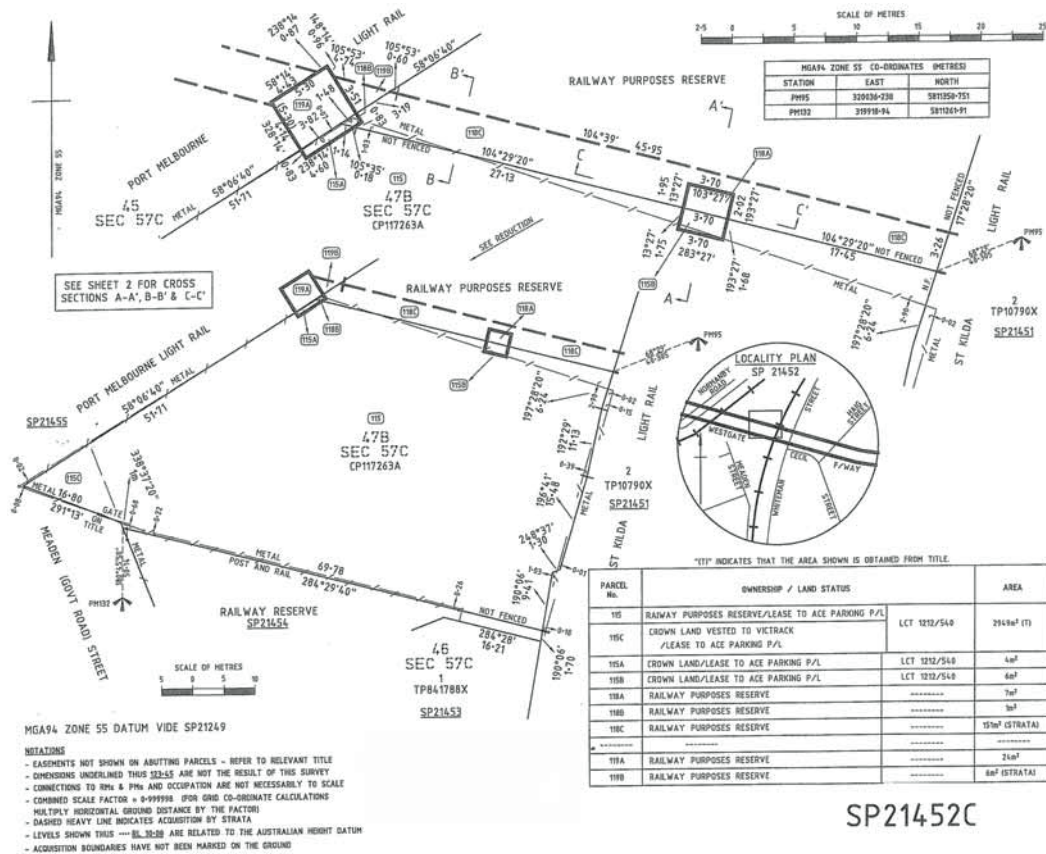
ORDER PURSUANT TO CLAUSE 27 OF SCHEDULE 5A

Order in Council

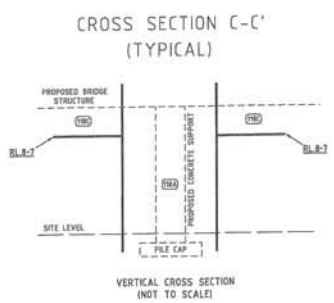
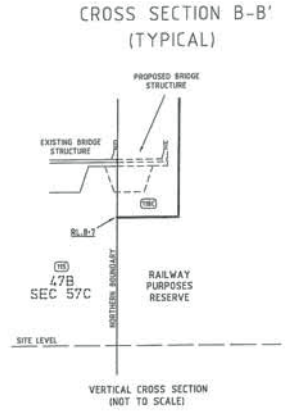
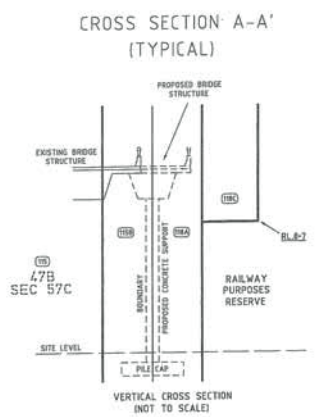
The Governor in Council, under clause 27 of Schedule 5A to the **Road Management Act 2004** (the Act), declares that all interests in the land of any public authority located in the Redevelopment Project Area and identified as:

- Parcels 115A–B on Survey Plan 21452C
- Parcels 108A–C on Survey Plan 21446A
- Parcels 104B–C on Survey Plan 21443A
- Parcels 101B–D and 101I–L on Survey Plan 21441A
- Parcels 16A–C on Survey Plan 21427B
- Parcels 105A, 105B, 105E–G on Survey Plan 21444A

copies of which are attached, are surrendered to the Crown.

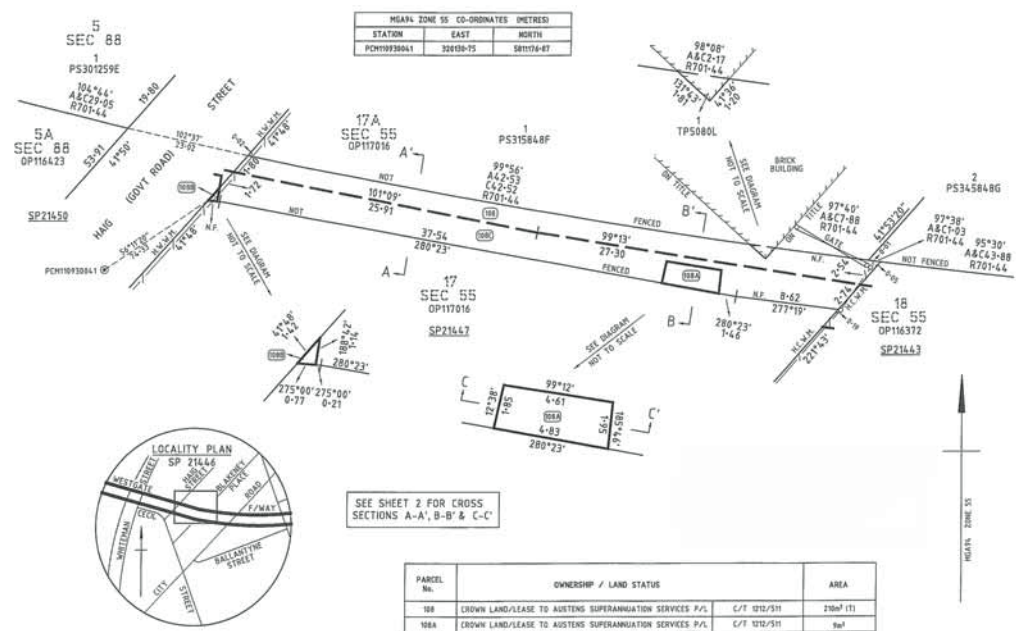


**SPECIAL**



PARCEL No.	OWNERSHIP / LAND STATUS	AREA
10B	FOR DETAILS SEE SHEET 1	
10B		
10A		
10C		

SP21452C



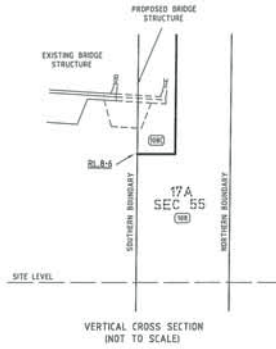
PARCEL No.	OWNERSHIP / LAND STATUS	AREA
10B	CROWN LAND/LEASE TO AUSTENS SUPERANNUATION SERVICES P/L	C/T 1210/511 210m <sup>2</sup> (1)
10BA	CROWN LAND/LEASE TO AUSTENS SUPERANNUATION SERVICES P/L	C/T 1210/511 9m <sup>2</sup>
10BB	CROWN LAND/LEASE TO AUSTENS SUPERANNUATION SERVICES P/L	C/T 1210/511 8-4m <sup>2</sup>
10BC	CROWN LAND/LEASE TO AUSTENS SUPERANNUATION SERVICES P/L	C/T 1210/511 110m <sup>2</sup> (STRATA)

- MGA94 ZONE 55 DATUM VIDE SP21249
- NOTATIONS
- EASEMENTS NOT SHOWN ON ADJUTING PARCELS - REFER TO RELEVANT TITLE
  - DIMENSIONS UNDERLINED THUS 332.55 ARE NOT THE RESULT OF THIS SURVEY
  - CONNECTIONS TO RPL AND PPL AND OCCUPATION ARE NOT NECESSARILY TO SCALE
  - CORNER SCALE FACTOR = 999999 FROM GRID CO-ORDINATE CALCULATIONS
  - MULTIPLY HORIZONTAL GROUND DISTANCE BY THE FACTOR
  - DASHED HEAVY LINE INDICATES ACQUISITION BY STRATA
  - LEVELS SHOWN THUS BL 30.28 ARE RELATED TO THE AUSTRALIAN HEIGHT DATUM
  - ACQUISITION BOUNDARIES HAVE NOT BEEN MARKED ON THE GROUND
  - CONNECTIONS SHOWN ARE NOT TO SCALE



SP21446A

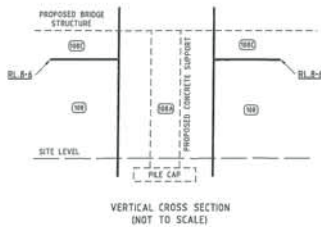
CROSS SECTION A-A'  
(TYPICAL)



CROSS SECTION B-B'  
(TYPICAL)



CROSS SECTION C-C'  
(TYPICAL)

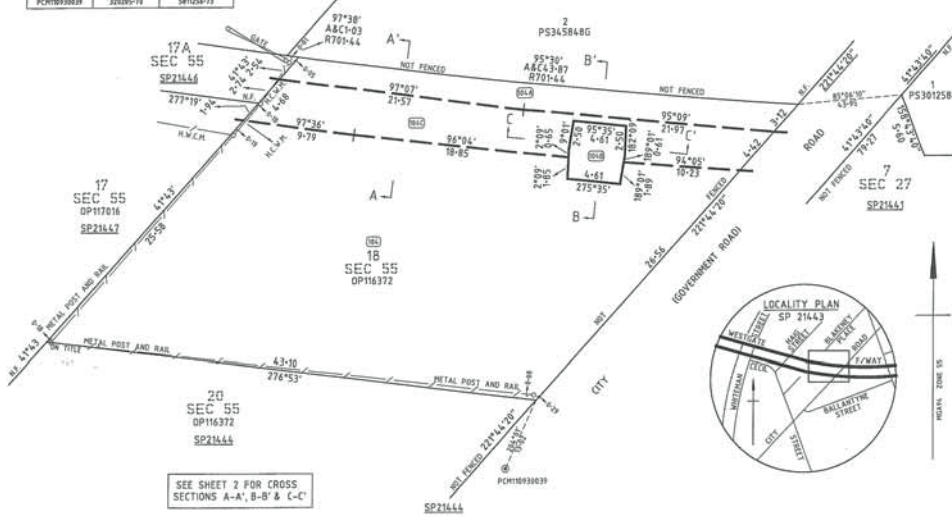


SP21446A

PARCEL No.	OWNERSHIP / LAND STATUS	AREA
18A	FOR DETAILS SEE SHEET 1	
18B		
18C		

"IT" INDICATES THAT THE AREA SHOWN IS OBTAINED FROM TITLE.

MGA94 ZONE 55 CO-ORDINATES (METRES)			
STATION	EAST	NORTH	
PCH1093033	320209.72	581250.73	



SEE SHEET 2 FOR CROSS SECTIONS A-A', B-B' & C-C'



MGA94 ZONE 55 DATUM VIDE SP21249

- NOTATIONS
- EASEMENTS NOT SHOWN ON ADJOINING PARCELS - REFER TO RELEVANT TITLE
  - DIMENSIONS UNDERLINED THICK 22025 ARE NOT THE RESULT OF THIS SURVEY
  - CONNECTIONS TO 89m & 99m AND OCCUPATION ARE NOT NECESSARILY TO SCALE
  - COMBINED SCALE FACTOR = 0.999999 FOR GRID CO-ORDINATE CALCULATIONS
  - MULTIPLY HORIZONTAL GROUND DISTANCE BY THE FACTOR
  - DASHED HEAVY LINE INDICATES ACQUISITION BY STRATA
  - LEVELS SHOWN THIS --- IN 30.00 ARE RELATED TO THE AUSTRALIAN HEIGHT DATUM
  - ACQUISITION BOUNDARIES HAVE NOT BEEN MARKED ON THE GROUND
  - CONNECTIONS SHOWN ARE NOT TO SCALE

SP21443A

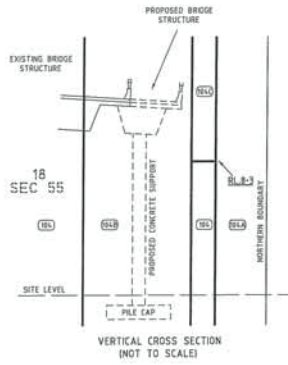
PARCEL No.	OWNERSHIP / LAND STATUS	AREA
18A	CROWN LAND/LEASE TO LA MIRADA PROPERTIES P/L	C/T 102/534 193m <sup>2</sup> (IT)
18B	CROWN LAND/LEASE TO LA MIRADA PROPERTIES P/L	C/T 102/534 186m <sup>2</sup>
18C	CROWN LAND/LEASE TO LA MIRADA PROPERTIES P/L	C/T 102/534 26m <sup>2</sup>
18D	CROWN LAND/LEASE TO LA MIRADA PROPERTIES P/L	C/T 102/534 18m <sup>2</sup> (STRATA)

"IT" INDICATES THAT THE AREA SHOWN IS OBTAINED FROM TITLE.

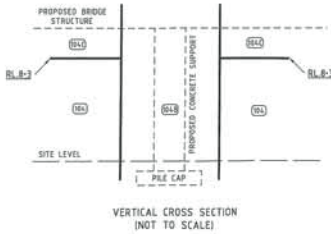
CROSS SECTION A-A'  
(TYPICAL)



CROSS SECTION B-B'  
(TYPICAL)



CROSS SECTION C-C'  
(TYPICAL)

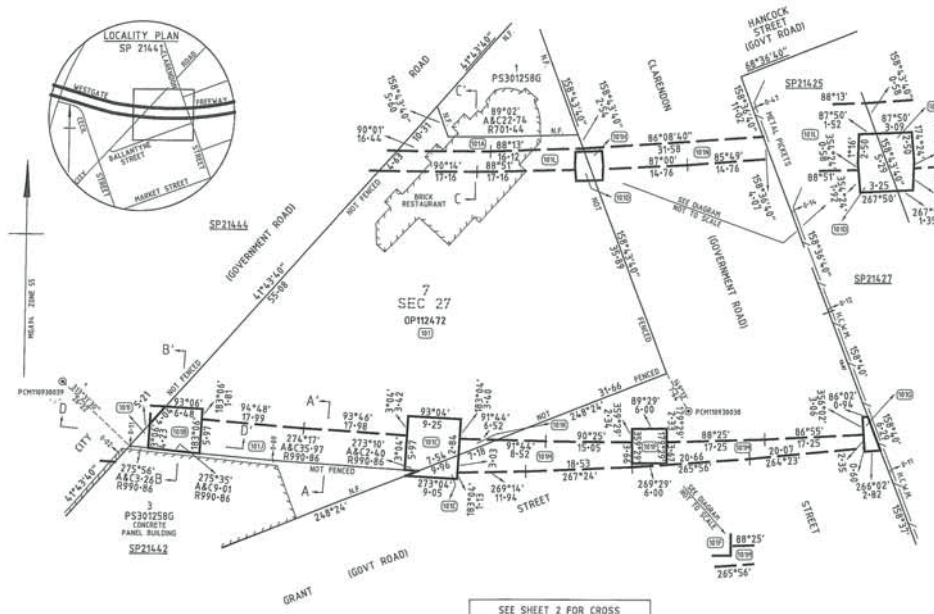


SP21443A

PARCEL No.	OWNERSHIP / LAND STATUS	AREA
102		
103A		
103C		
103D		

FOR DETAILS SEE SHEET 1

\*10\* INDICATES THAT THE AREA SHOWN IS OBTAINED FROM TITLE.

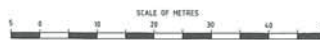


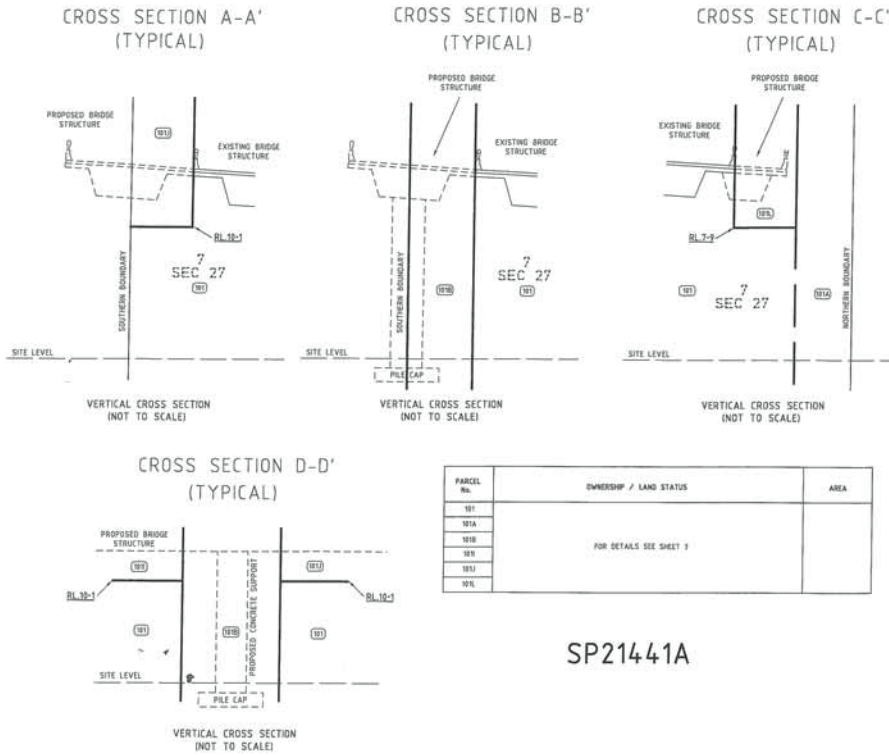
SP21441A

MGA94 ZONE 55 DATUM WIDE SP21249

- NOTATIONS**
- EASEMENTS NOT SHOWN ON ADJOINING PARCELS - REFER TO RELEVANT TITLE
  - DIMENSIONS UNDERLINED THIS INDICATES ARE NOT THE RESULT OF THIS SURVEY
  - CONNECTING TO SPN & PMS AND OCCUPATION ARE NOT NECESSARY TO SCALE
  - COMBINED SCALE FACTOR = 0.99998 (FOR GRID CO-ORDINATE CALCULATIONS)
  - MULTIPLY HORIZONTAL GROUND DISTANCE BY THE FACTOR
  - DASHED HEAVY LINE INDICATES ACQUISITION BY STRATA
  - LEVELS SHOWN THIS ---BL-30-00 ARE RELATED TO THE AUSTRALIAN HEIGHT DATUM
  - ACQUISITION BOUNDARIES HAVE NOT BEEN MARKED ON THE GROUND

MGA94 ZONE 55 CO-ORDINATES (METRES)			
STATION	EAST	NORTH	
PCH1093038	330320-22	581245-14	
PCH1093039	330250-28	581256-73	





SP21441A

PARCEL No.	OWNERSHIP / LAND STATUS	AREA
101	CROWN LAND/LEASE TO McDONALD'S PROPERTIES (AUST.) P/L C/T 1212/450	3118m <sup>2</sup> (T)
101A	CROWN LAND/LEASE TO McDONALD'S PROPERTIES (AUST.) P/L C/T 1212/450	94m <sup>2</sup>
101B	CROWN LAND/LEASE TO McDONALD'S PROPERTIES (AUST.) P/L C/T 1212/450	64m <sup>2</sup>
101C	CROWN LAND/LEASE TO McDONALD'S PROPERTIES (AUST.) P/L C/T 1212/450	76m <sup>2</sup>
101D	CROWN LAND/LEASE TO McDONALD'S PROPERTIES (AUST.) P/L C/T 1212/450	12m <sup>2</sup>
101E	BALLANTYNE STREET	19m <sup>2</sup>
101F	BALLANTYNE STREET	36m <sup>2</sup>
101G	CLARENDON STREET	11m <sup>2</sup>
101H	CLARENDON STREET	12m <sup>2</sup>
101I	CROWN LAND/LEASE TO McDONALD'S PROPERTIES (AUST.) P/L C/T 1212/450	7m <sup>2</sup> (STRATA)
101J	CROWN LAND/LEASE TO McDONALD'S PROPERTIES (AUST.) P/L C/T 1212/450	216m <sup>2</sup> (STRATA)
101K	CROWN LAND/LEASE TO McDONALD'S PROPERTIES (AUST.) P/L C/T 1212/450	9m <sup>2</sup> (STRATA)
101L	CROWN LAND/LEASE TO McDONALD'S PROPERTIES (AUST.) P/L C/T 1212/450	116m <sup>2</sup> (STRATA)
101M	BALLANTYNE STREET	257m <sup>2</sup> (STRATA)
101N	CLARENDON STREET	114m <sup>2</sup> (STRATA)

"(T)" INDICATES THAT THE AREA SHOWN IS OBTAINED FROM TITLE.

SP21441A

PARCEL No.	OWNERSHIP / LAND STATUS	AREA
1E		545m <sup>2</sup> (1)
1G		12m <sup>2</sup>
1H	CRON LAND/LEASE TO CRON LIMITED	25m <sup>2</sup>
1K		3m <sup>2</sup>
1L		2m <sup>2</sup>
1M		4m <sup>2</sup>
1N		2m <sup>2</sup>
1P	CRON LAND	2m <sup>2</sup>
1Q		2m <sup>2</sup>
1R		2m <sup>2</sup>
1S		2m <sup>2</sup>
1T		2m <sup>2</sup>

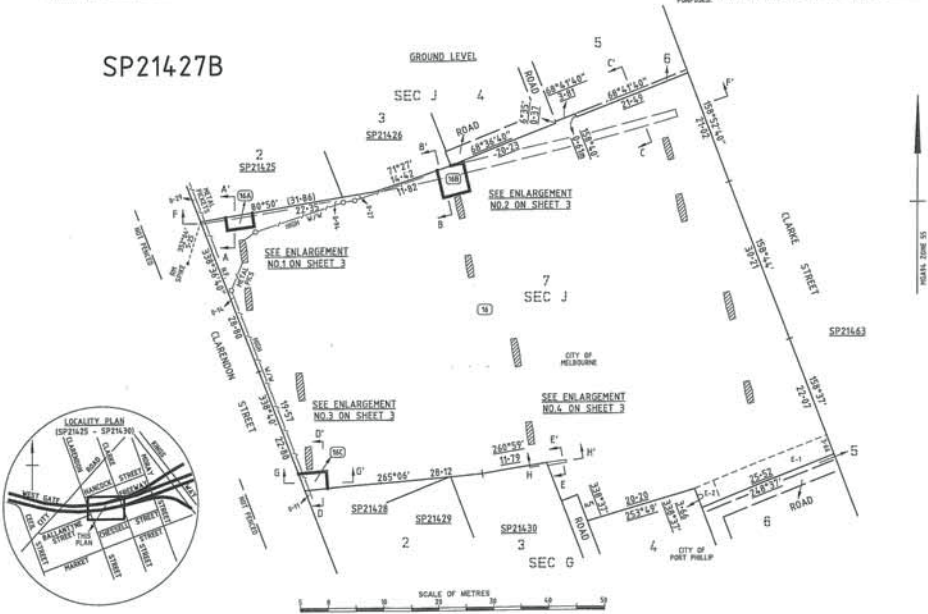
(1) INDICATES AREA HAS BEEN OBTAINED BY DEDUCTION FROM TITLE

DATUM: MGA 94 ZONE 55 VIDE CONTROL SP21249

**NOTATIONS**

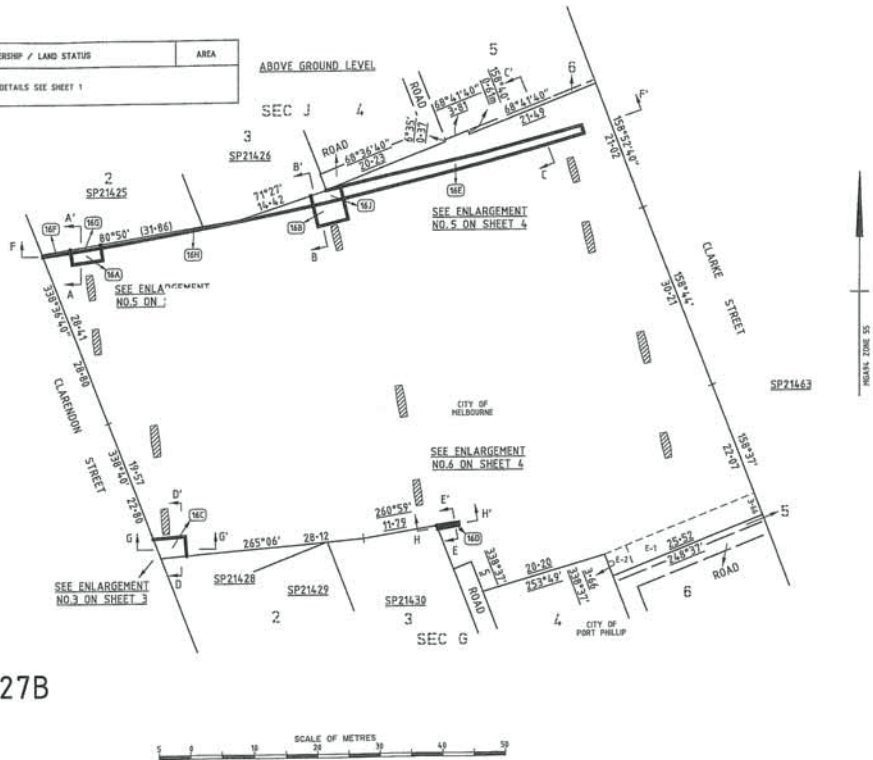
1. SURVEYED BOUNDARIES ARE NOT FENCED UNLESS SHOWN OTHERWISE.
2. DIMENSIONS SHOWN UNENCLOSED ARE NOT THE RESULT OF THIS SURVEY.
3. ROAD WIDTHS AND CONNECTIONS OF RIMS AND PWS IS BOUNDARIES ARE NOT PLOTTED TO SCALE.
4. LEVELS SHOWN IN THE DOTTED LINE ARE RELATED TO AUSTRALIAN HEIGHT DATUM 1984.
5. ACQUISITION BOUNDARIES HAVE NOT BEEN MARKED ON THE GROUND.
6. FOR COMPLETE DETAILS OF CRON GRANT INCLUDING EASEMENTS SEE C/O 192/951.
7. CONCRETE PILES SHOWN WITH [Symbol] ARE EXCLUDED FROM THE AREAS SHOWN.
8. FOR UPPER AND LOWER LIMITS OF EXISTING STRATUM SEE C/O 192/951.
9. BOUNDARIES SHOWN AT ABOVE GROUND LEVEL ARE NOT FENCED UNLESS SHOWN OTHERWISE.
10. EXISTING EASEMENT SHOWN AS E-1 IS FOR CARTRIDGEWAY PURPOSES.
11. EXISTING EASEMENT SHOWN AS E-2 IS FOR SEWERAGE AND CARTRIDGEWAY PURPOSES.

SP21427B

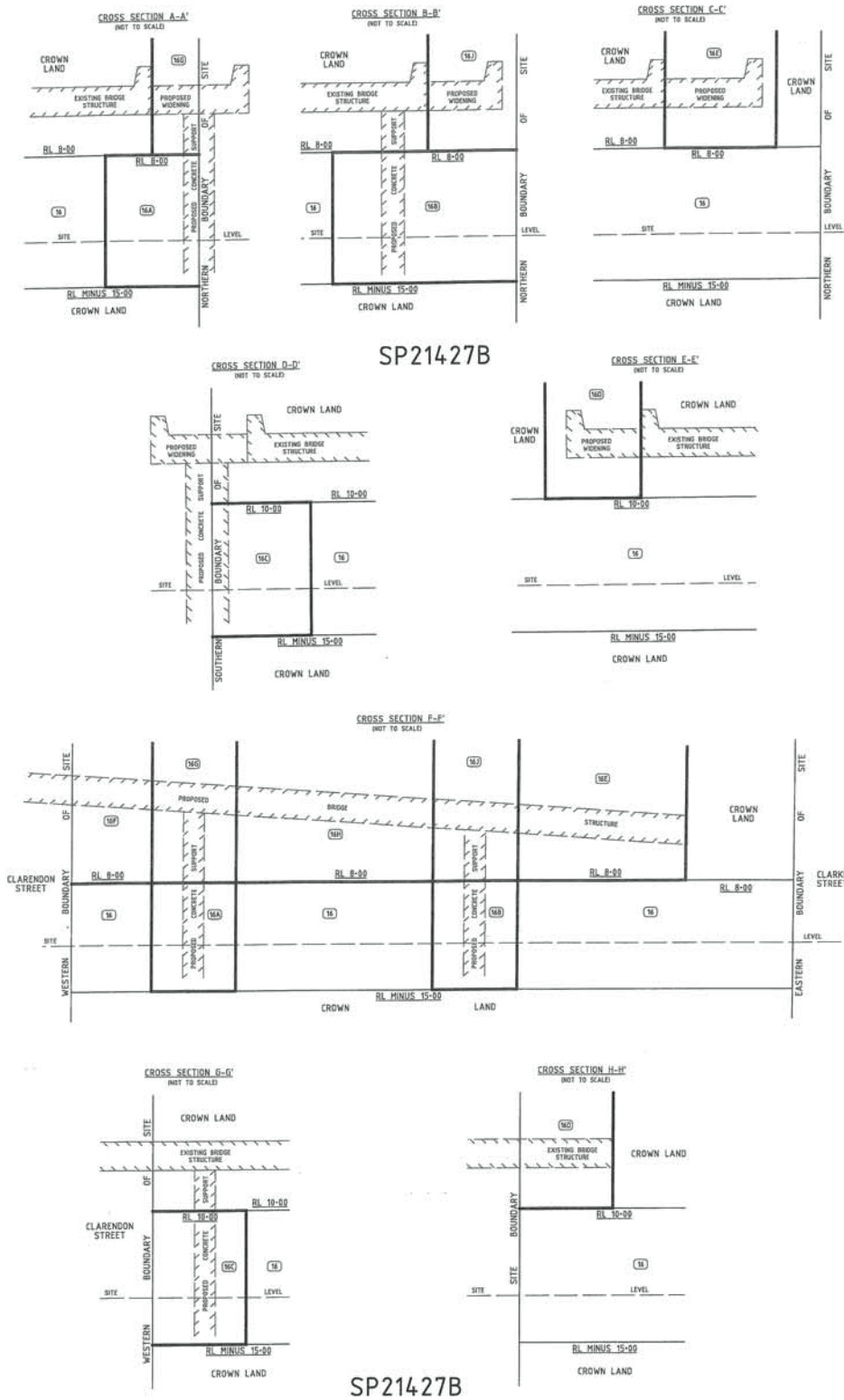


PARCEL No.	OWNERSHIP / LAND STATUS	AREA
FOR DETAILS SEE SHEET 1		

SP21427B



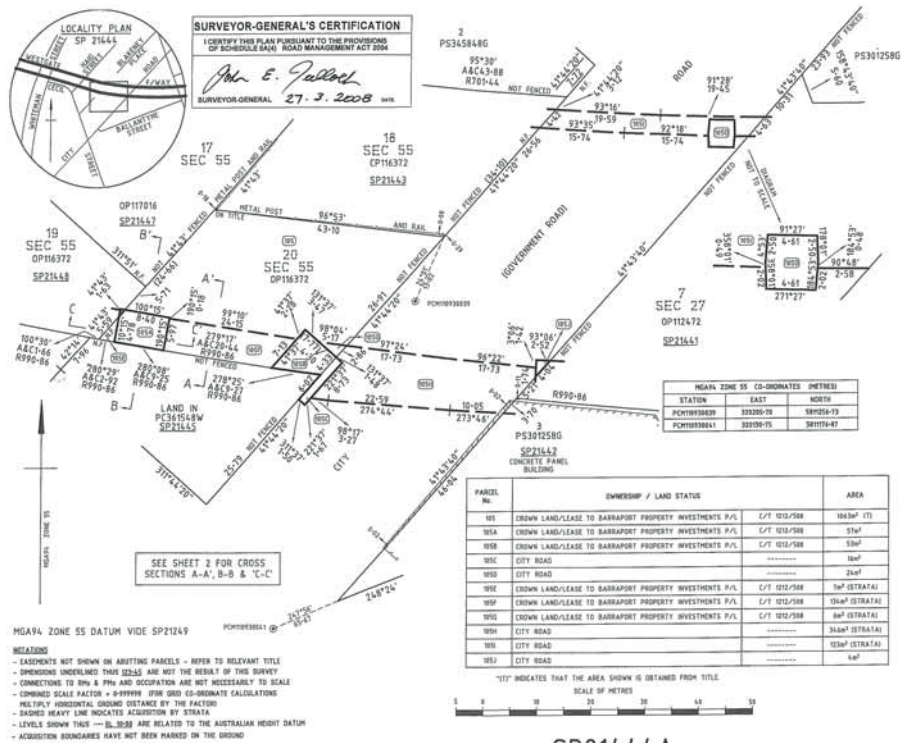




SP21427B

SP21427B



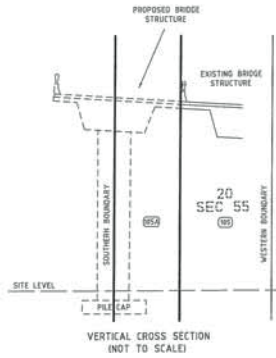


SP21444A

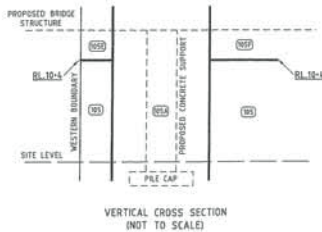
CROSS SECTION A-A' (TYPICAL)



CROSS SECTION B-B' (TYPICAL)



CROSS SECTION C-C' (TYPICAL)



PARCEL No.	OWNERSHIP / LAND STATUS	AREA
101		
102A		
102	FOR DETAILS SEE SHEET 1	
103		

SP21444A

Dated 10 June 2008

Responsible Minister

TIM PALLAS MP

Minister for Roads and Ports

RYAN HEATH  
Clerk of the Executive Council

---

This page was left blank intentionally

**craftsmanpress**

The *Victoria Government Gazette* is published by The Craftsman Press Pty Ltd with the authority of the Government Printer for the State of Victoria

© State of Victoria 2008

This publication is copyright. No part may be reproduced by any process except in accordance with the provisions of the Copyright Act.

Address all enquiries to the Government Printer for the State of Victoria  
Level 2 1 Macarthur Street  
Melbourne 3002  
Victoria Australia

**How To Order**

	<b>Mail Order</b>	<b>Victoria Government Gazette</b> Level 1 520 Bourke Street Melbourne 3000 PO Box 1957 Melbourne 3001 DX 106 Melbourne
	<b>Telephone</b>	(03) 9642 5808
	<b>Fax</b>	(03) 9600 0478
	<b>email</b>	gazette@craftpress.com.au
	<b>Retail &amp; Mail Sales</b>	<b>Victoria Government Gazette</b> Level 1 520 Bourke Street Melbourne 3000 PO Box 1957 Melbourne 3001
	<b>Telephone</b>	(03) 9642 5808
	<b>Fax</b>	(03) 9600 0478
	<b>Retail Sales</b>	<b>Information Victoria</b> 505 Little Collins Street Melbourne 3000
	<b>Telephone</b>	1300 366 356
	<b>Fax</b>	(03) 9603 9920

**Price Code A**