



Victoria Government Gazette

No. S 119 Wednesday 11 April 2012
By Authority of Victorian Government Printer

Sustainable Forests (Timber) Act 2004

ALLOCATION TO VICFORESTS (AMENDMENT) ORDER 2012

I, Peter Walsh MLA, Minister for Agriculture and Food Security, make the following order to amend the Allocation to VicForests Order 2004 (as already amended).

1. Title

This Order may be cited as the Allocation to VicForests (Amendment) Order 2012.

2. Objectives

The objective of the Allocation to VicForests (Amendment) Order 2012 is to amend the Allocation to VicForests Order 2004 (the 2004 Order) as already amended.

3. Authorising provision

This amendment is made under section 17(1)(c) of the **Sustainable Forests (Timber) Act 2004**.

4. Amendments

For paragraph 5 of the 2004 Order (as already amended) substitute the following:

‘In accordance with section 15(1)(b) of the **Sustainable Forests (Timber) Act 2004**, VicForests is permitted to harvest and sell, or harvest or sell timber resources in accordance with this Order and is permitted to undertake associated management activities on coupes described in any Timber Release Plan approved by the Secretary in relation to that allocated timber, including:

- preparation of sites for timber harvesting
- construction of access roads to coupes
- site rehabilitation
- forest regeneration

VicForests is permitted to undertake these activities until timber harvesting operations are completed, and the coupes are adequately rehabilitated and regenerated. Rehabilitation and regeneration will be in accordance with the conditions and standards specified in the Code of Practice for Timber Production 2007.

VicForests is permitted to collect seed from any allocated forest stand for the purpose of regenerating coupes harvested in accordance with this Order. VicForests is permitted to construct fire trails on State forest within the vicinity of the coupe boundary for fire management purposes associated with the regeneration of harvested coupes to the satisfaction of the Secretary.

VicForests is permitted to harvest wattle (*Acacia* spp.) where these occur in conjunction with allocated forest stands identified in Tables 1–3.

VicForests is permitted to tend forest stands, including the undertaking of thinning operations in accordance with its Thinning Strategy (version 1.4, 7 December 2009), to produce high value timber resources for the future from the total available area in line with Victoria’s sustainable forest management framework. The tending of forest stands will not be attributed to the available area for timber harvesting. The location, approximate timing of forest stand tending operations and the location of associated access roads must be identified in an approved Timber Release Plan.’

For paragraph 6 of the 2004 Order (as already amended) substitute the following:

‘In accordance with section 15(1)(c) of the **Sustainable Forests (Timber) Act 2004**, in undertaking authorised activities VicForests is required to comply with the following conditions:

SPECIAL

- VicForests must divide the total available area of the forests stands to which it has access into contiguous harvesting units (coupes) and assign each harvesting unit a coupe number by 30 June 2012. A map(s) of these harvesting units must be made publicly available.
- In each 5-year period, the total area (the gross area) of timber harvesting coupes and the estimated net area of roadline coupes on an approved Timber Release Plan must not exceed the available area for timber harvesting for that period.
- In each 5-year period, timber harvesting in any part of a timber harvesting coupe on an approved Timber Release Plan will result in the total area (the gross area) of that coupe being attributed to the available area for timber harvesting for that period. Where timber harvesting occurs in a coupe over more than one period, the total area (the gross area) of the coupe will be attributed to the available area for timber harvesting in the first period that timber harvesting occurs only.
- The actual area (the net area) harvested in a fire salvage coupe will be attributed to the available area for timber harvesting for that period.
- In each 5-year period, the actual area (the net area) of roadline operations in a roadline coupe will be attributed to the available area for timber harvesting for that period.
- VicForests must advise the Secretary to the Department of Sustainability and Environment of the long term sustainable harvest level that it has calculated from the forest stands to which it has access, and provide to the Secretary to the Department of Sustainability and Environment quality assured data, models and assumptions that it has used in making the calculation for the purposes of audit for compliance with the framework for sustainable forest management in Victoria.
- VicForests must provide quality-assured data on harvesting extent (logging history) to the Secretary to the Department of Department of Primary Industries by 30 September each year.
- VicForests must provide quality-assured stocking (regeneration) survey results and data to the Secretary to the Department of Sustainability and Environment within 36 months of the completion of timber harvesting in a coupe on an approved Timber Release Plan.
- VicForests timber harvesting operations and associated activities will be subject to independent audit of compliance with an approved Timber Release Plan and this Order. VicForests must make available information requested from it by an auditor appointed by the Secretary to the Department of Sustainability and Environment.'

For Tables 1, 2 and 3 of the 2004 Order (as already amended) substitute the following tables:

'Table 1: Gross area available for timber harvesting in Period 2 of this Order (1 August 2009 to 31 July 2014).

Forest stands	Total available area (ha)	Area available for timber harvesting (ha)
Ash	239,300	17,400
Mixed species	1,617,000	71,800

Table 2: Gross area available for timber harvesting in Period 3 of this Order (1 August 2014 to 31 July 2019).

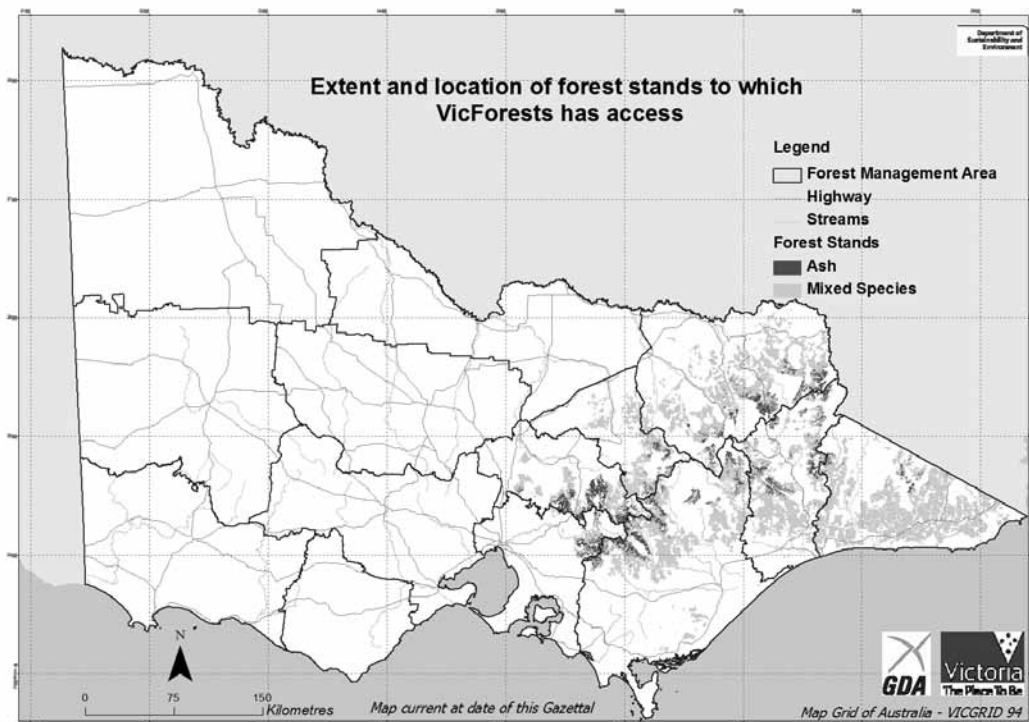
Forest stands	Total available area (ha)	Area available for timber harvesting (ha)
Ash	239,300	13,400
Mixed species	1,617,000	71,800

Table 3: Gross area available for timber harvesting in Period 4 of this Order (1 August 2019 to 31 July 2024).

Forest stands	Total available area (ha)	Area available for timber harvesting (ha)
Ash	239,300	12,400
Mixed species	1,617,000	71,800

For Attachment 1 of the 2004 Order (as already amended) substitute the following attachment:

‘ATTACHMENT 1



Notes:

1. This map depicts the extent and location of the types of forest stands referred to in Tables 1 to 3.
2. A current version of the map will be temporally maintained on the Department of Sustainability and Environment website (www.dse.vic.gov.au, Interactive Maps, Forests Explorer Online) following which it will be maintained on the Department of Primary Industries web site no later than 2 May 2012.

Dated 2 April 2012

PETER WALSH MLA
Minister for Agriculture and Food Security

bluestar * **PRINT**

The *Victoria Government Gazette* is published by Blue Star Print with the authority of the Government Printer for the State of Victoria

© State of Victoria 2012

This publication is copyright. No part may be reproduced by any process except in accordance with the provisions of the Copyright Act.

Address all enquiries to the Government Printer for the State of Victoria

Level 2, 1 Macarthur Street
Melbourne 3002
Victoria Australia

How To Order**Mail Order****Victoria Government Gazette**

Level 5, 460 Bourke Street
Melbourne 3000
PO Box 1957 Melbourne 3001
DX 106 Melbourne

**Telephone**

(03) 8523 4601

**Fax**

(03) 9600 0478

email

gazette@bluestargroup.com.au

**Retail & Mail Sales****Victoria Government Gazette**

Level 5, 460 Bourke Street
Melbourne 3000
PO Box 1957 Melbourne 3001

**Telephone**

(03) 8523 4601

**Fax**

(03) 9600 0478

**Retail Sales****Victorian Government Bookshop**

Level 20, 80 Collins Street
Melbourne 3000

**Telephone**

1300 366 356

**Fax**

(03) 9208 3316

Price Code A