



# Victoria Government Gazette

No. S 99 Friday 28 February 2020  
By Authority of Victorian Government Printer

## Safety on Public Land Act 2004

### DECLARATION OF PUBLIC SAFETY ZONES

I, Matt Potter, Deputy Chief Fire Officer, as delegate of the Secretary to the Department of Environment, Land, Water and Planning, make the following declaration of public safety zones under section 4(1) of the **Safety on Public Land Act 2004**.

#### 1. Definitions

In this declaration:

- (a) 'the Act' means the **Safety on Public Land Act 2004**;
- (b) 'the declared public safety zone' means the area declared under clause 3 of this declaration;
- (c) 'the Schedule' means the Schedule to this declaration.

#### 2. Declaration of Public Safety Zones

All areas of State forest:

- (a) in the Department of Environment, Land, Water and Planning Gippsland region included in the shaded areas as indicated on the map in Appendix 1;
- (b) in the Department of Environment, Land, Water and Planning Hume region south of the Hume Highway included in the shaded areas as indicated on the map in Appendix 2; are declared to be public safety zones.

#### 3. Purpose for which the area has been declared

The purpose for which the declared public safety zones have been declared is for the maintenance of public safety.

#### 4. Period of the declaration

The period for which the declared public safety zones are declared is the period commencing midnight on the day of publication of this notice in the Victoria Government Gazette and ending on 10.00 am on 31 March 2020.

#### 5. Activities prohibited

The activities that are prohibited in the declared public safety zones are:

- (a) Entering a declared public safety zone during a period when access is prohibited; and
- (b) Remaining in or being present in a declared public safety zone during a period when access is prohibited.

#### 6. Periods when access is prohibited

The times during which access to the declared public safety zone is prohibited is at all times during the period of the declaration.

#### 7. Exempt persons or classes of person

Pursuant to section 5(2) of the Act, the following persons or classes of person are exempt from the operation of this declaration:

- (a) Employees, agents and contractors of the Department of Environment, Land, Water and Planning engaged in carrying out their functions.
- (b) Employees, agents, volunteers and contractors of the Country Fire Authority engaged in carrying out their functions.
- (c) Employees, agents and contractors of the Metropolitan Fire and Emergency Services Board, Ambulance Victoria, WorkSafe Victoria and Environment Protection Authority Victoria engaged in carrying out their functions.

**SPECIAL**

- (d) Members of the police force of Victoria engaged in carrying out their functions.
- (e) Employees, agents and contractors of the Local Government Areas engaged in carrying out their functions.
- (f) Employees, agents and contractors of the Department of Health and Human Services engaged in carrying out their functions.
- (g) Employees, agents, volunteers and contractors of an Emergency Management Service engaged by the Department of Environment, Land, Water and Planning or the Country Fire Authority to carry out an emergency management function.
- (h) Employees, agents, volunteers and contractors of assisting the Department of Environment, Land, Water and Planning or the Country Fire Authority in their emergency management functions operating in accordance with an agreement or arrangement to provide this assistance.
- (i) Employees, agents and contractors of Water Authorities engaged in carrying out their functions.
- (j) Members of the public using State forest roads as the most practical access to and from private properties surrounding State forest.
- (k) Employees, agents and contractors engaged in accessing and carrying out functions within a prescribed mine, as defined by regulation 401 of the Occupational Health and Safety Regulations 2017, where both an approved work plan, as defined by section 40 of the **Mineral Resources (Sustainable Development) Act 1990**, and an Emergency plan, prepared in accordance with regulation 433 of the Occupational Health and Safety Regulations 2017, are in place which address the risk of bushfires.
- (l) Employees, agents and contractors of VicForests engaged in carrying out their functions.

Dated 28 February 2020

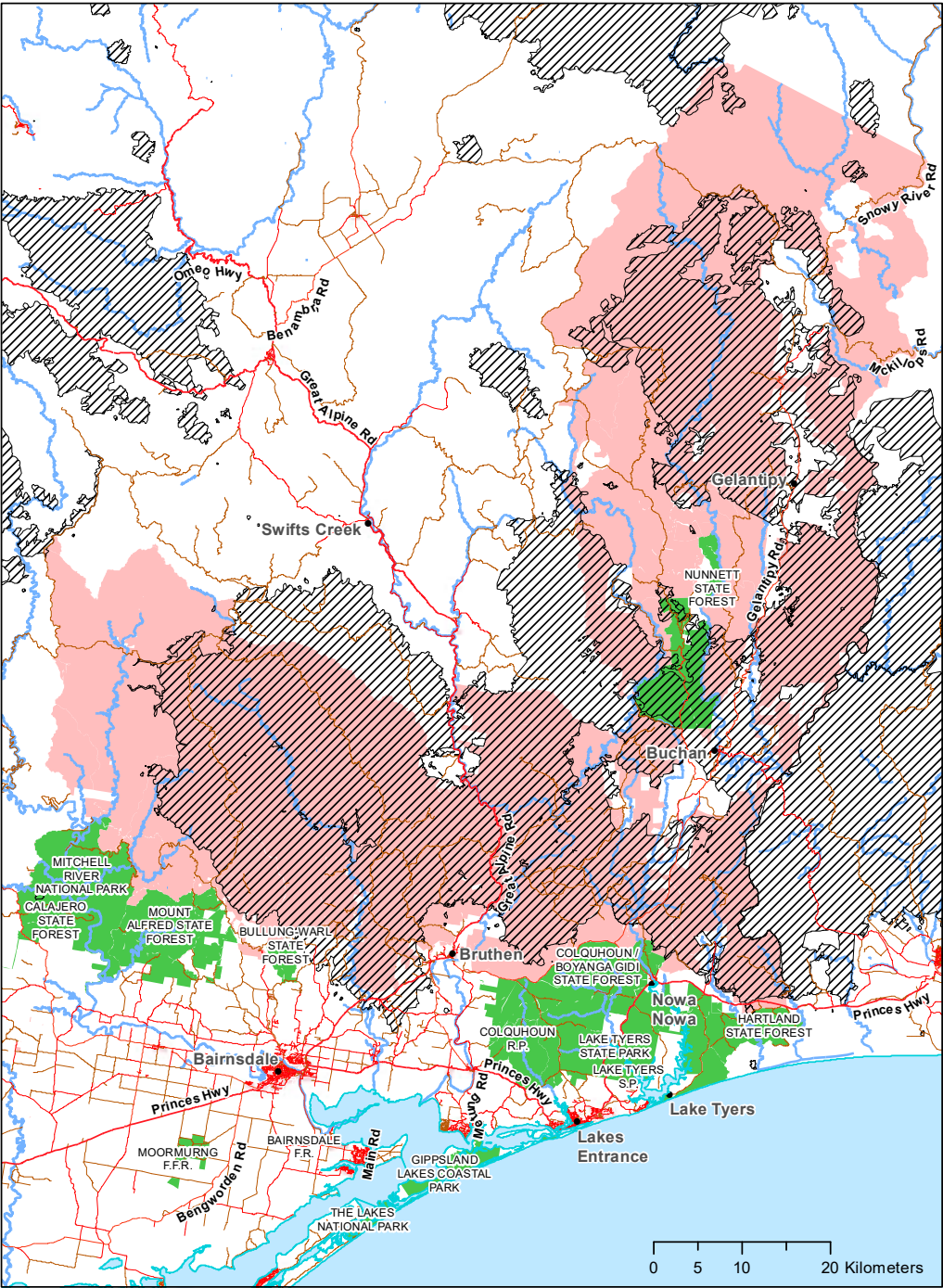
MATT POTTER  
Deputy Chief Fire Officer  
as delegate of the Secretary  
to the Department of Environment, Land, Water and Planning

#### Notes

1. A map of the boundaries of the Department of Environment, Land, Water and Planning's Gippsland and Hume regions is available at <https://www2.delwp.vic.gov.au/communities-and-regions/regions-and-locations>
2. A map showing the public safety zone is held at the Department of Environment, Land, Water and Planning (DELWP) offices at Ballarat, Bendigo, Benalla, Geelong, Traralgon and Bairnsdale, and at DELWP's head office at 8 Nicholson Street, East Melbourne, Victoria 3002 (by appointment with the Policy Officer, Programs, Assets and Risk). The map is also available on the following website: <https://www.ffm.vic.gov.au/permits-and-regulations/closures-of-parks-and-forests>
3. In addition to the above persons or classes of person exempted under section 5(2), section 9 of the **Safety on Public Land Act 2004** provides that a public safety zone declaration does not apply to the following:
  - the Secretary;
  - an authorised officer;
  - a utility engaged in the carrying out of its functions in a State forest;
  - a transport authority engaged in the carrying out of its functions in a State forest;
  - a person or class of person authorised under section 10 of the **Safety on Public Land Act 2004** to be in the public safety zone.

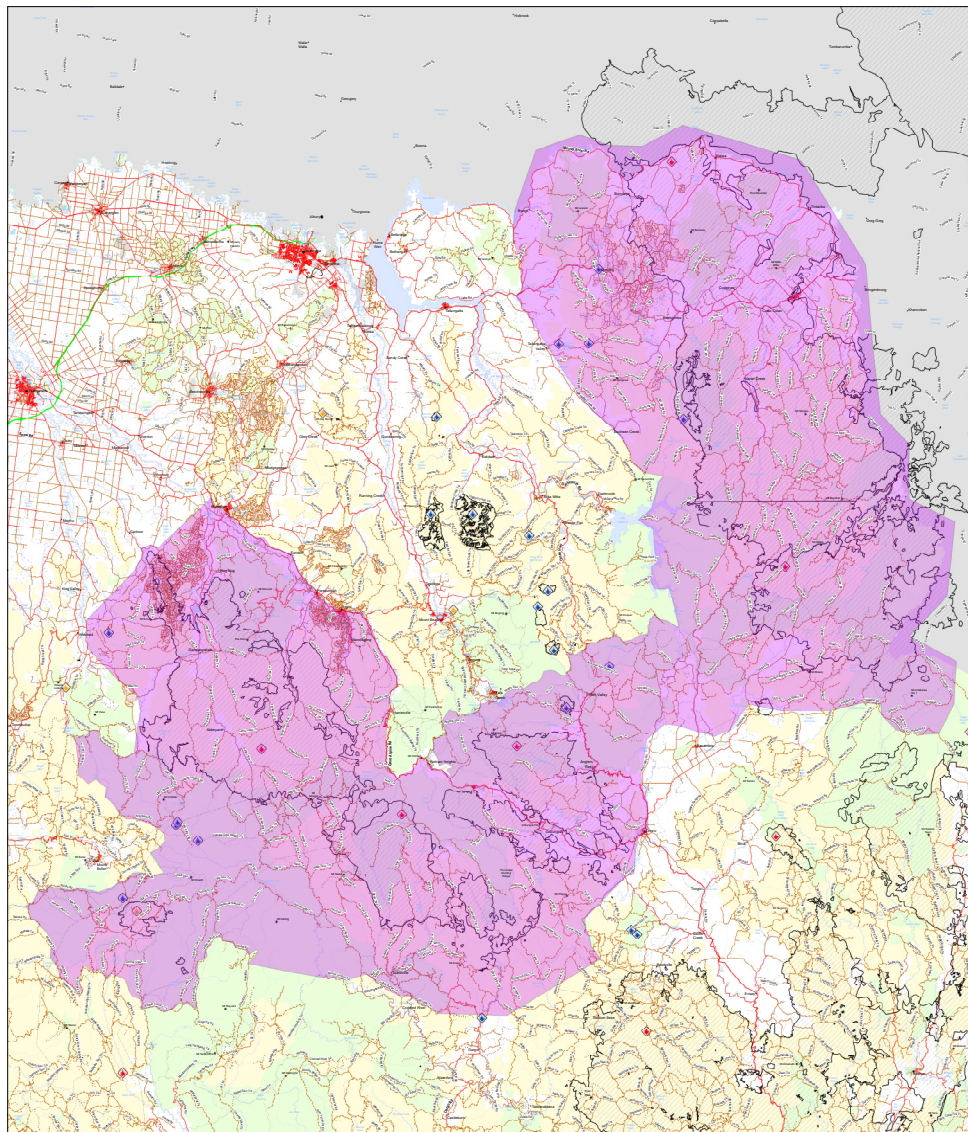
APPENDIX 1

Bairnsdale ICC - Park and Forest Closures Map  
18 Feb 2020



## APPENDIX 2

OVE41 Abbeyard - Yarrarabula South | | 31/01/2020| A1P 1:240,000



MXD Name: C:\Data\Incident archive\2019-2020\Ovens\_NYE\_Complex\20200120\_DAY\mxd\20200120\_1900\_Closure\_Map.mxd  
 Date Last Saved/Printed: Monday, 20 January 2020 7:55:07 PM  
 PC login: iccove01  
 PC Number: WL6YL3QF2

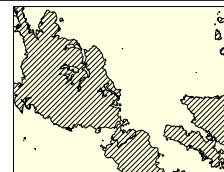
Linescan: 1630h 18/01/2020  
 Field Obs: 1500h 19/01/2020  
 AIG: 0415hr 19/01/2020

0 1 2 Kilometres



- Current Burnt Area
- Point of Interest
- Fire Control Line - Completed; Planned
- Fire Edge Active; Contained; Predicted
- Potential Impact Zone
- Completed Backburn Line; Planned
- Aerial Ignition - Completed; Proposed
- Asset

- Going
- Contained
- Under Control
- Fire Origin
- Division Extremity
- Spot Fire
- Incident Control Centre
- Control/Operations Point
- Traffic Management Point
- Water Point; WP - Vehicle; WP - Helicopter
- Satellite Hot Spot - 0-12hrs; 12-24hrs; 24-72hrs
- Base Camp
- Sector Extremity
- Hot Spot
- Helipad
- Staging Area
- Air Strip



Mapping Unit: [iccove.map@icc.vic.gov.au](mailto:iccove.map@icc.vic.gov.au)

Disclaimer: This map is a snapshot generated from Victorian Government data. The State of Victoria does not guarantee that the publication is without flaw of any kind or is wholly appropriate for our particular purposes and therefore disclaims all liability for error, loss or damage which may arise from reliance upon it. All persons accessing this information should make appropriate enquiries to assess the currency of the data.



This page was left blank intentionally

This page was left blank intentionally

This page was left blank intentionally

**ive**

The *Victoria Government Gazette* is published by IVE Group Limited with the authority of the Government Printer for the State of Victoria

© State of Victoria 2020

This publication is copyright. No part may be reproduced by any process except in accordance with the provisions of the Copyright Act.

Address all enquiries to the Government Printer for the State of Victoria

Level 2, 1 Macarthur Street

Melbourne 3002

Victoria Australia

### How To Order

**Retail &  
Mail Sales****Victoria Government Gazette**

Ground Floor, Building 8,  
658 Church Street,  
Richmond 3121

DX 106 Melbourne

**Telephone**

(03) 8523 4601

**Fax**

(03) 9600 0478

**email**

[gazette@ivegroup.com.au](mailto:gazette@ivegroup.com.au)

**Price Code A**