



# Victoria Government Gazette

No. S 283 Friday 11 June 2021  
By Authority of Victorian Government Printer

## Safety on Public Land Act 2004

### DECLARATION OF PUBLIC SAFETY ZONES

I, Geoffrey Conway, Deputy Chief Fire Officer, Gippsland Region, Department of Environment, Land Water and Planning, as delegate of the Secretary to the Department of Environment, Land Water and Planning, make the following declaration of public safety zones under section 4(1) of the **Safety on Public Land Act 2004**.

#### 1. Definitions

In this declaration:

- (a) 'the Act' means the **Safety on Public Land Act 2004**;
- (b) 'the declared public safety zone' means the area declared under clause 2 of this declaration;
- (c) 'the Schedule' means the Schedule to this declaration;

#### 2. Declaration of Public Safety Zones

All areas of State forest within the Local Government Areas of Baw Baw, Latrobe, South Gippsland, and Wellington as indicated by the shaded areas on the map in Appendix 1 are declared to be public safety zones.

#### 3. Purpose for which the area has been declared

The purpose for which the declared public safety zones have been declared is for the maintenance of public safety.

#### 4. Period of the declaration

The period for which the declared public safety zones are declared is the period commencing from 12 June 2021 and ending on 18 June 2021 inclusive.

#### 5. Activities prohibited

The activities that are prohibited in the declared public safety zones are:

- (a) Knowingly entering a declared public safety zone during a period when access is prohibited; and
- (b) Knowingly remaining in or being present in a declared public safety zone during a period when access is prohibited.

#### 6. Periods when access is prohibited

Access is prohibited to the declared public safety zone throughout the period of the declaration.

#### 7. Exempt persons or classes of person

Pursuant to section 5(2) of the Act, the following persons or classes of person are exempt from the operation of this declaration:

- (a) Employees, agents and contractors of the Department of Environment, Land Water and Planning engaged in carrying out their functions.
- (b) Employees, agents, volunteers and contractors of the Country Fire Authority engaged in carrying out their functions.
- (c) Employees, agents and contractors of the Metropolitan Fire and Emergency Services Board, Ambulance Victoria, WorkSafe Victoria and Environment Protection Authority Victoria engaged in carrying out their functions.
- (d) Members of the police force of Victoria engaged in carrying out their functions.
- (e) Employees, agents and contractors of the Local Government Areas engaged in carrying out their functions.

**SPECIAL**

- (f) Employees, agents and contractors of the Department of Human Services engaged in carrying out their functions.
- (g) Employees, agents, volunteers and contractors of an Emergency Management Services engaged by the Department of Environment, Land, Water and Planning or the Country Fire Authority to carry out an emergency management functions.
- (h) Employees, agents, volunteers and contractors of Networked Emergency Organisation partners engaged by the Department of Environment, Land, Water and Planning or the Country Fire Authority to carry out their functions.
- (i) Employees, agents and contractors of Water Authorities engaged in carrying out their functions.
- (j) Members of the public using State forest roads as the most practical access to and from private properties surrounding State forest.
- (k) Employees, agents and contractors engaged in accessing and carrying out functions within a prescribed mine, as defined by regulation 5.3.3 of the Occupational Health and Safety Regulations 2007, where both an approved work plan, as defined by section 40 of the **Mineral Resources(Sustainable Development Act 1990)**, and an Emergency plan, prepared in accordance with regulation 5.3.34 of the Occupational Health and Safety Regulations 2007, are in place which address the risk of bushfires.

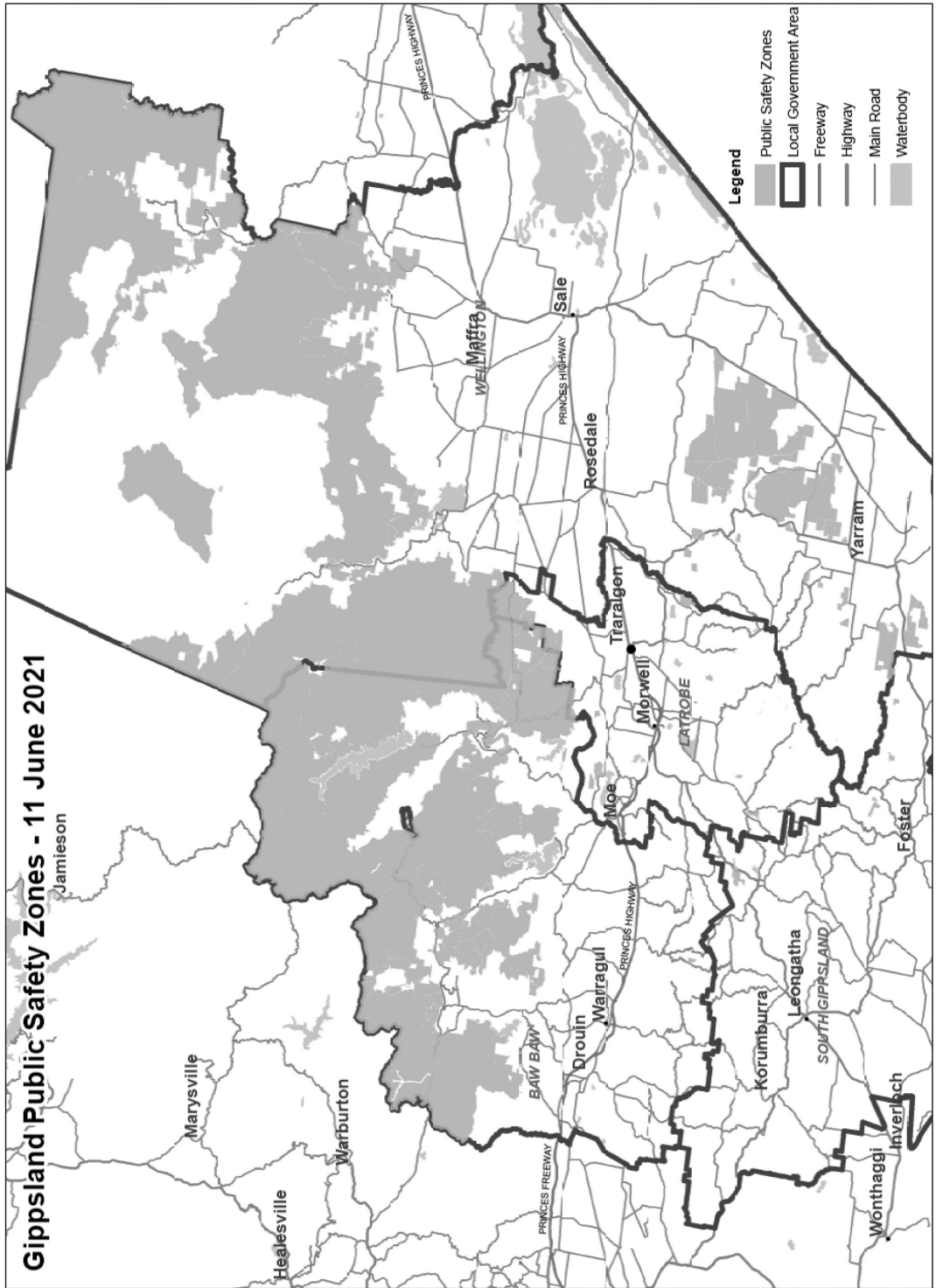
Dated 11 June 2021

GEOFFREY CONWAY  
Deputy Chief Fire Officer, Gippsland Region  
as delegate of the Secretary of the Department of  
Environment, Land, Water and Planning

Notes:

1. A map showing the public safety zone is held at the Traralgon office and at the Department's head office at 8 Nicholson Street, East Melbourne, Vic. 3002. The map is also available on the following web site: [www.ffm.vic.gov.au/permits-and-regulations/closures-of-parks-and-forests](http://www.ffm.vic.gov.au/permits-and-regulations/closures-of-parks-and-forests)
2. In addition to the above persons or classes of person exempted under section 5(2), section 9 of the **Safety on Public Land Act 2004** provides that a public safety zone declaration does not apply to the following:
  - the Secretary;
  - an authorised officer;
  - a utility engaged in the carrying out of its functions in a State forest;
  - a transport authority engaged in the carrying out of its functions in a State forest;
  - a person or class of person authorised under section 10 of the **Safety on Public Land Act 2004** to be in the public safety zone.

Appendix 1



**Safety on Public Land Act 2004****DECLARATION OF PUBLIC SAFETY ZONES**

I, Tony English, Deputy Chief Fire Officer - Grampians, as delegate of the Secretary to the Department of Environment, Land Water and Planning, make the following declaration of public safety zones under section 4(1) of the **Safety on Public Land Act 2004**.

**1. Definitions**

In this declaration:

- (a) ‘the Act’ means the **Safety on Public Land Act 2004**;
- (b) ‘the declared public safety zone’ means the area declared under clause 2 of this declaration;
- (c) ‘the Schedule’ means the Schedule to this declaration;

**2. Declaration of Public Safety Zones**

- (a) The areas of State forest contained within the location coordinates in the Schedule are declared to be public safety zones and associated map.
- (b) The extent of the public safety zones are described by the minimum planimetric extent using a North South orientated rectangle that encloses the area bound by:
  - a. the south-west limit described by the first two metric coordinates (Easting and Northing); and
  - b. the north-east limit described by the next two metric coordinates (Easting and Northing).
- (c) The public safety zones are limited to all areas that contain State forest within an area identified by the coordinates and map in the Schedule.
- (d) The coordinates in Schedule 1 are provided in Map Grid of Australia (MGA) Universal Transverse Mercator (UTM) Zone number 55. These use the Geodetic Reference System 1980 (GRS80) spheroid.

**3. Purpose for which the area has been declared**

The purpose for which the declared public safety zones have been declared is for the maintenance of public safety in relation to storm damage and associated tree hazards, unstable road conditions and damaged infrastructure. These operations include all assessment, treatment and rehabilitation works associated within the storm event area and access tracks.

**4. Period of the declaration**

The period for which the declared public safety zones are declared is the period commencing from 11th June 2021 and ending on 31 August 2021 inclusive.

**5. Activities prohibited**

The activities that are prohibited in the declared public safety zones are:

- (a) Knowingly entering a declared public safety zone during a period when access is prohibited; and
- (b) Knowingly remaining in or being present in a declared public safety zone during a period when access is prohibited.

**6. Periods when access is prohibited**

Access is prohibited to the declared public safety zone throughout the period of the declaration.

**7. Exempt persons or classes of person**

Pursuant to section 5(2) of the Act, the following persons or classes of person are exempt from the operation of this declaration:

- (a) Employees, agents and contractors of the Department of Environment, Land, Water and Planning engaged in carrying out their functions.
- (b) Employees, agents, volunteers and contractors of the Country Fire Authority engaged in carrying out their functions.

- (c) Employees, agents and contractors of the Metropolitan Fire and Emergency Services Board, Ambulance Victoria, WorkSafe Victoria and Environment Protection Authority Victoria engaged in carrying out their functions.
- (d) Members of the police force of Victoria engaged in carrying out their functions.
- (e) Employees, agents and contractors of the Local Government Areas engaged in carrying out their functions.
- (f) Employees, agents and contractors of the Department of Human Services engaged in carrying out their functions.
- (g) Employees, agents, volunteers and contractors of an Emergency Management Services engaged by the Department of Environment, Land, Water and Planning or the Country Fire Authority to carry out an emergency management functions.
- (h) Employees, agents, volunteers and contractors of Networked Emergency Organisation partners engaged by the Department of Environment, Land, Water and Planning or the Country Fire Authority to carry out their functions.
- (i) Employees, agents and contractors of power and water authorities engaged in carrying out their functions.
- (j) Members of the public using State forest roads as the most practical access to and from private properties adjoining, or surrounded by, State forest, subject to road closures due to hazardous trees and road conditions to ensure safe egress to private properties
- (k) Employees, agents and contractors engaged in accessing and carrying out functions within a prescribed mine, as defined by regulation 5.3.3 of the Occupational Health and Safety Regulations 2007, where both an approved work plan, as defined by section 40 of the **Mineral Resources (Sustainable Development Act 1990)**, and an Emergency plan, prepared in accordance with regulation 5.3.34 of the Occupational Health and Safety Regulations 2007, are in place which address the risk of bushfires.

Dated 11 June 2021

TONY ENGLISH,  
Deputy Chief Fire Officer, Grampians,  
as delegate of the Secretary of the Department of  
Environment, Land, Water and Planning

Notes:

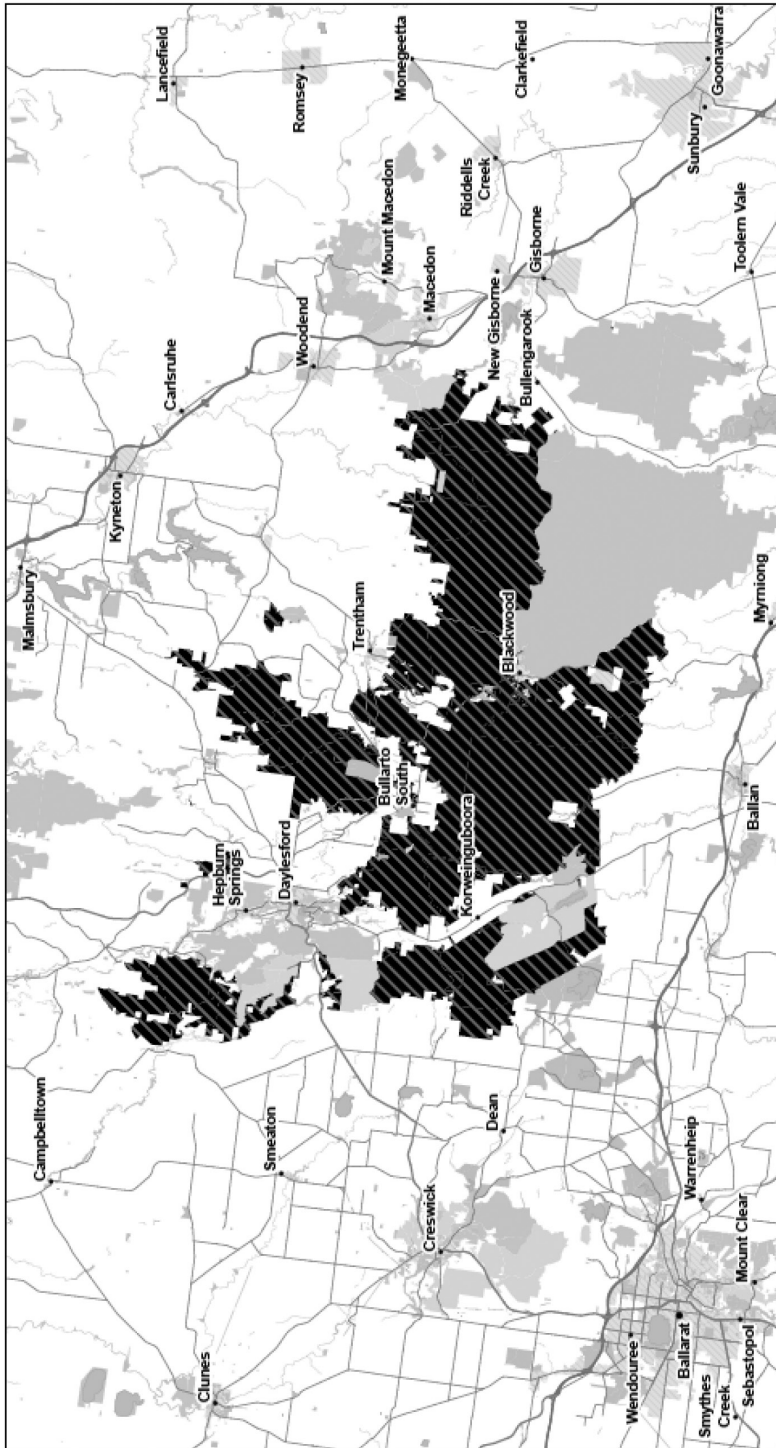
Maps showing the public safety zones are held at the Department of Environment, Land, Water and Planning (DELWP) Regional office at Ballarat and at 8 Nicholson Street, East Melbourne, Vic. 3002 (by appointment with Regional Fuel Management Coordinator, telephone 136 186). Maps are also available on the following web site: <https://www.ffm.vic.gov.au/permits-and-regulations/closures-of-parks-and-forests>

1. In addition to the above persons or classes of person exempted under section 5(2), section 9 of the **Safety on Public Land Act 2004** provides that a public safety zone declaration does not apply to the following:
  - the Secretary;
  - an authorised officer;
  - a utility engaged in the carrying out of its functions in a State forest;
  - a transport authority engaged in the carrying out of its functions in a State forest;
  - a person or class of person authorised under section 10 of the Safety on Public Land Act 2004 to be in the public safety zone.

**Schedule: Public Safety Zones**

<b>Extent of Public Safety Zones</b>					
<b>State Forest, Forest Park or Reserve</b>	<b>South-west limit</b>		<b>North-east limit</b>		<b>MGA Zone</b>
	<b>Easting</b>	<b>Northing</b>	<b>Easting</b>	<b>Northing</b>	
Wombat State Forest	775192	5842748	794793	5869399	Zone 55

# Forest Closure - DELWP Managed Land Wombat State Forest Area



**Closed State Forest - DELWP Managed**
  
**Public Land**
  
 Parks and Other Conservation Reserves
   
 Other Public Land
   
 Commonwealth Land
   
 Plantation

0 2.25 4.5 9 13.5 18
   
 Kilometers

W E
   
 N S

This map is a representation of the information contained in the DELWP Land Management Information System (LIMS) as at 31/05/2021. It is not a legal document and should not be relied upon for legal purposes. For more information, please contact DELWP.

DELWP



**Safety on Public Land Act 2004****DECLARATION OF PUBLIC SAFETY ZONES**

I, Scott Falconer, Deputy Chief Fire Officer – Loddon Mallee, as delegate of the Secretary to the Department of Environment, Land, Water and Planning, make the following declaration of public safety zones under section 4(1) of the **Safety on Public Land Act 2004**.

**1. Definitions**

In this declaration:

- (a) ‘the Act’ means the **Safety on Public Land Act 2004**;
- (b) ‘the declared public safety zone’ means the area declared under clause 2 of this declaration;
- (c) ‘the Schedule’ means the Schedule to this declaration;

**2. Declaration of Public Safety Zones**

- (a) The areas of State forest contained within the location coordinates in the Schedule are declared to be public safety zones and associated map.
- (b) The extent of the public safety zones are described by the minimum planimetric extent using a North South orientated rectangle that encloses the area bound by:
  - a. the south-west limit described by the first two metric coordinates (Easting and Northing); and
  - b. the north-east limit described by the next two metric coordinates (Easting and Northing).
- (c) The public safety zones are limited to all areas that contain State forest within an area identified by the coordinates and map in the Schedule.
- (d) The coordinates in Schedule 1 are provided in Map Grid of Australia (MGA) Universal Transverse Mercator (UTM) Zone number 55. These use the Geodetic Reference System 1980 (GRS80) spheroid.

**3. Purpose for which the area has been declared**

The purpose for which the declared public safety zones have been declared is for the maintenance of public safety in relation to storm damage and associated tree hazards, unstable road conditions and damaged infrastructure. These operations include all assessment, treatment and rehabilitation works associated within the storm event area and access tracks.

**4. Period of the declaration**

The period for which the declared public safety zones are declared is the period commencing from 11th June 2021 and ending on 30 June 2021 inclusive.

**5. Activities prohibited**

The activities that are prohibited in the declared public safety zones are:

- (a) Knowingly entering a declared public safety zone during a period when access is prohibited; and
- (b) Knowingly remaining in or being present in a declared public safety zone during a period when access is prohibited.

**6. Periods when access is prohibited**

Access is prohibited to the declared public safety zone throughout the period of the declaration.

**7. Exempt persons or classes of person**

Pursuant to section 5(2) of the Act, the following persons or classes of person are exempt from the operation of this declaration:

- (a) Employees, agents and contractors of the Department of Environment, Land, Water and Planning engaged in carrying out their functions.
- (b) Employees, agents, volunteers and contractors of the Country Fire Authority engaged in carrying out their functions.

- (c) Employees, agents and contractors of the Metropolitan Fire and Emergency Services Board, Ambulance Victoria, WorkSafe Victoria and Environment Protection Authority Victoria engaged in carrying out their functions.
- (d) Members of the police force of Victoria engaged in carrying out their functions.
- (e) Employees, agents and contractors of the Local Government Areas engaged in carrying out their functions.
- (f) Employees, agents and contractors of the Department of Human Services engaged in carrying out their functions.
- (g) Employees, agents, volunteers and contractors of an Emergency Management Services engaged by the Department of Environment, Land, Water and Planning or the Country Fire Authority to carry out an emergency management functions.
- (h) Employees, agents, volunteers and contractors of Networked Emergency Organisation partners engaged by the Department of Environment, Land, Water and Planning or the Country Fire Authority to carry out their functions.
- (i) Employees, agents and contractors of Water Authorities engaged in carrying out their functions.
- (j) Members of the public using State forest roads as the most practical access to and from private properties surrounding State forest, notwithstanding road closures due to hazardous trees and road conditions to ensure safe egress to private properties
- (k) Employees, agents and contractors engaged in accessing and carrying out functions within a prescribed mine, as defined by regulation 5.3.3 of the Occupational Health and Safety Regulations 2007, where both an approved work plan, as defined by section 40 of the **Mineral Resources (Sustainable Development Act 1990)**, and an Emergency plan, prepared in accordance with regulation 5.3.34 of the Occupational Health and Safety Regulations 2007, are in place which address the risk of bushfires.

Dated 11/06/2021

SCOTT FALCONER  
Deputy Chief Fire Officer, Loddon Mallee,  
as delegate of the Secretary of the Department of  
Environment, Land, Water and Planning

Notes:

Maps showing the public safety zones are held at the Department of Environment, Land, Water and Planning (DELWP) Regional office at Traralgon and at 8 Nicholson Street, East Melbourne, Vic. 3002 (by appointment with Regional Fuel Management Coordinator, telephone 136 186). Maps are also available on the following web site: <https://www.ffm.vic.gov.au/permits-and-regulations/closures-of-parks-and-forests>

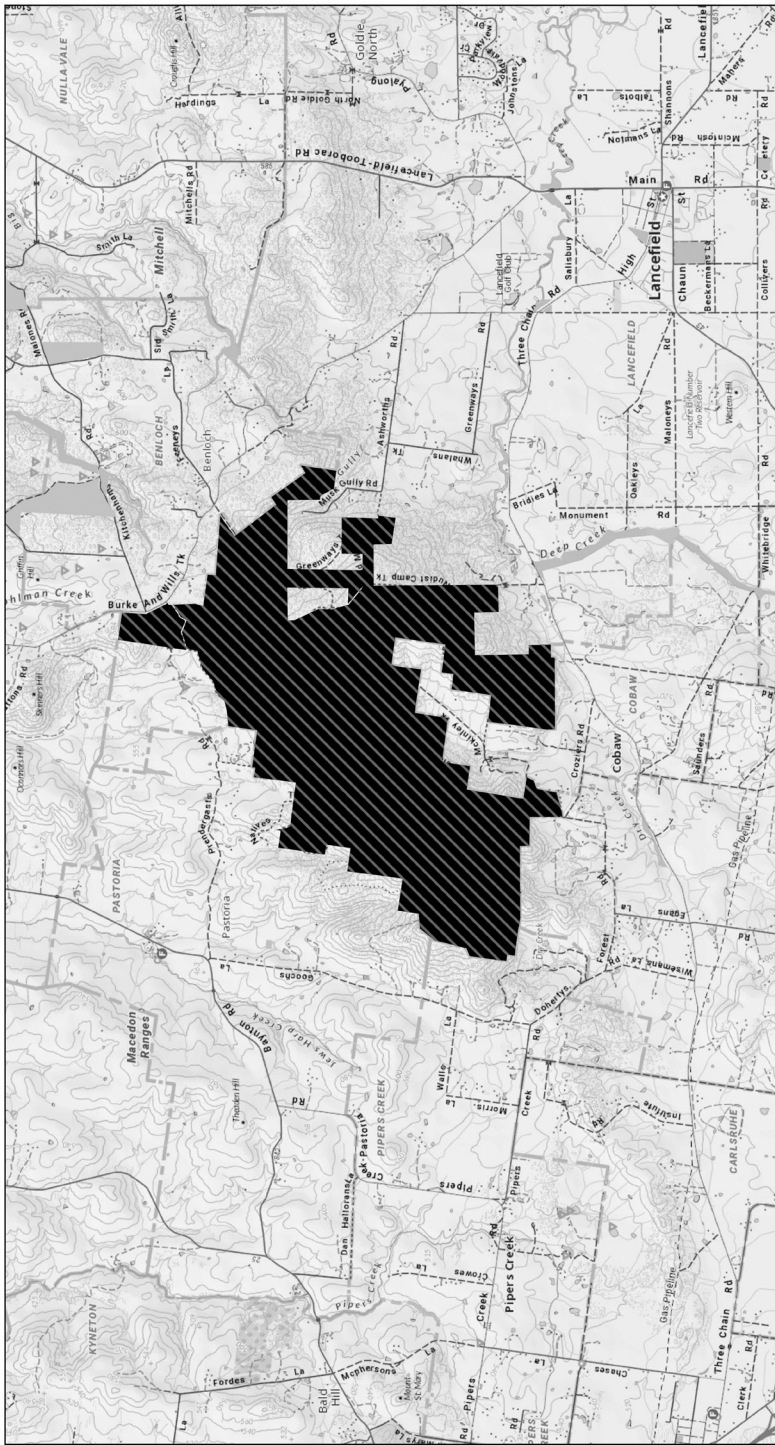
1. In addition to the above persons or classes of person exempted under section 5(2), section 9 of the **Safety on Public Land Act 2004** provides that a public safety zone declaration does not apply to the following:
  - the Secretary;
  - an authorised officer;
  - a utility engaged in the carrying out of its functions in a State forest;
  - a transport authority engaged in the carrying out of its functions in a State forest;
  - a person or class of person authorised under section 10 of the Safety on **Public Land Act 2004** to be in the public safety zone.







**Schedule: Public Safety Zones**

<b>Extent of Public Safety Zones</b>					
<b>State Forest, Forest Park or Reserve</b>	<b>South-west limit</b>		<b>North-east limit</b>		<b>MGA Zone</b>
	<b>Easting</b>	<b>Northing</b>	<b>Easting</b>	<b>Northing</b>	
Cobaw State Forest	286438	5874136	292056	5880814	Zone 55



Forest Closure - DELWP Managed Land  
Cobaw State Forest Area



-  Closed State Forest - DELWP Managed
-  Public Land
-  Parks and Other Conservation Reserves
-  Other Public Land
-  Commonwealth Land
-  Plantation



Information on this map is derived from the Victorian Land Information System (VLIS) and other sources. The Department of Environment, Land, Water and Planning (DELWP) is not responsible for any errors or omissions in this map. For more information, visit [www.delwp.vic.gov.au](http://www.delwp.vic.gov.au).

This page was left blank intentionally

This page was left blank intentionally

# ive

The *Victoria Government Gazette* is published by IVE Group Limited with the authority of the Government Printer for the State of Victoria

© State of Victoria 2021

This publication is copyright. No part may be reproduced by any process except in accordance with the provisions of the Copyright Act.

Address all enquiries to the Government Printer for the State of Victoria  
Level 2, 1 Macarthur Street  
Melbourne 3002  
Victoria Australia

## How To Order



**Retail &  
Mail Sales**

**Victoria Government Gazette**

Ground Floor, Building 8,  
658 Church Street,  
Richmond 3121

DX 106 Melbourne



**Telephone**

(03) 8523 4601

**email**

[gazette@ivegroup.com.au](mailto:gazette@ivegroup.com.au)

**Price Code A**